

25

WAYS TO CROCHET ON A HOT SUMMER DAY!

Crochet World[®]

The Magazine for Crochet Lovers

JUNE 2014

A Day at The Beach

Cool Styles for Fun
In the Sun!

- Seaside Wrap
- Beach Pebble Pendants

Fun With Filet

Lacy Patterns for Home
& Fashion

- Eyelet Lace Throw
- Filet Flowered Scarf

Spring Bouquet Shawl
page 6

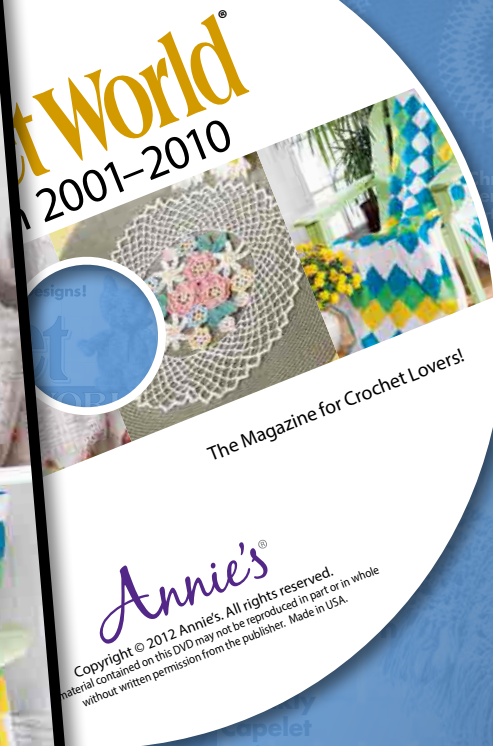


Find Us

100s of crochet patterns and how-to techniques can be yours!

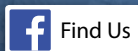


CWDV01
\$39.95



Annie's®
Copyright © 2012 Annie's. All rights reserved.
Material contained on this DVD may not be reproduced in part or in whole
without written permission from the publisher. Made in USA.

- Every page of every issue from 2001–2010
- Fully searchable PDFs
- Browse all content issue by issue



Order today at AnniesCatalog.com



16



32



48

Crochet World®

JUNE 2014 • Volume 37, No. 3

Find us on the Web at Crochet-World.com

A DAY AT THE BEACH

24 Seaside Wrap
Design by Annette Stewart

26 Beach Pebble Pendants
Designs by Jennifer E. Ryan

28 Limeade Beach Bag
Design by Margaret Dick

30 Cottage Rug
Design by Kathleen Stuart

FUN WITH FILET

32 Eyelet Lace Throw
Design by Dora Ohrenstein

34 "I Love Crochet" Sampler
Design by Bonnie Barker

36 Filet Flowered Scarf
Design by Cindy Adams

FEATURES

40 Vintage Roses Purse Set
Designs by Brenda Stratton

43 Father's Day Card
Design by Ruie Richardson

45 Deep Waters Keyhole Shawl
Design by Kristen Stoltzfus

46 Sunset Colors Throw
Design by Katherine Eng

48 Spinilicious Doily
Design by Gemma Owen

50 Lil' Miss Hootie
Design by Yvonne Odegard

52 Cluster Stripes Baby Blanket
Design by Delma Myers

DEPARTMENTS

4 First Row

6 Winner's Circle
Spring Bouquet Shawl
Design by Shari White

8 Beginner's Luck
Fun in the Sun Hat
Design by Katherine Eng

10 Fast, Easy, Fun!
Citrus Drops Table Set
Designs by Debra Arch

12 Scrap Delights
Farm Animal Stools: Cow
Design by Alessandra Hayden

16 Touch of Style
Reel of Cables Shell
Design by Bonnie Barker

20 Just Threads
Flower Petals Doily
Design by Agnes Russell

22 What's Old Is New Again
Lace Motif Pot Holder
Design by Susan Lowman

37 Product Review

38 Crochet Connections

39 Back Talk!

63 Yarn Weights

63 Buyer's Guide

64 Skill Levels

64 Coming Next Issue

65 Stitch Guide

66 Design Directory



26

FOR SUBSCRIPTION SERVICE, including change of address, visit online at Crochet-World.com (select Customer Care). Or send an email to Customer_Care@Crochet-World.com. 24 hours a day, 7 days a week. Or write to *Crochet World* Customer Care, P.O. Box 9001, Big Sandy, TX 75755. Please enclose your label from a recent issue. Or call (800) 829-5865 Monday–Friday, 8 a.m.–7 p.m. CT, Saturday, 7 a.m.–5 p.m. CT and Sunday, 9 a.m.–5 p.m. CT.



Ah, June ... the month that kicks off one of the most anticipated seasons of the year—glorious summer!—when people are planning exciting vacations, trips to the beach, barbecues with family and friends, and other fun warm-weather activities.

In our A Day at the Beach section, you'll find several beach-themed projects for home and fashion. Included are a fabulous Seaside Wrap that can be worn different ways, a set of chic Beach Pebble Pendants, a pretty and practical

Limeade Beach Bag and a colorful, eye-catching Cottage Rug.

Crochet World fans love filet, and in our Fun With Filet section, we've got projects from small to large that offer a little something for everyone. The "I Love Crochet" Sampler makes a lovely framed piece for your wall, or a unique gift for a crocheting friend. Other projects include a light and airy Filet Flowered Scarf and an elegant Eyelet Lace Throw.



Rounding out the issue is a fabulous variety of additional throws, doilies, fashion accessories and adorable items for the little ones. All in all, it's an exceptional array of projects to keep your summer stitching filled with fun and creativity!

Happy stitching,

Carol Alexander

Newsstand buyers can access a digital version of this issue with a limited-time code of CW8313.

JOIN US ON FACEBOOK!

Visit us on Facebook at www.facebook.com/CrochetWorldMag to follow the fun and conversation, and be sure to like us!

Letters and submissions to the editor should be sent via email to Editor@Crochet-World.com or through our website at Crochet-World.com. They can also be faxed to (260) 589-8093 or mailed to *Crochet World* Editor, Annie's, 306 East Parr Road, Berne, IN 46711. Letters chosen for publication may be edited for clarity and space.

Every effort is made to return submissions if accompanied by return postage. Publisher assumes no responsibility for return or safety of unsolicited materials.



Crochet World®

An Annie's Publication

Crochet-World.com

EXECUTIVE EDITOR	Carol Alexander
CREATIVE DIRECTOR	Brad Snow
PUBLISHING SERVICES DIRECTOR	Brenda Gallmeyer
EDITORIAL ASSISTANT	Sara Meyer
GRAPHIC DESIGNER	Joe Taylor
COPY SUPERVISOR	Corene Painter
SENIOR COPY EDITOR	Emily Carter
COPY EDITOR	Rebekah R. Blomenberg
TECHNICAL EDITORS	Tammy Hildebrand Agnes Russell
TECHNICAL ARTISTS	Pam Gregory Debera Kuntz
PRODUCTION ARTIST SUPERVISOR	Erin Brandt
SENIOR PRODUCTION ARTIST	Nicole Gage
PRODUCTION ARTISTS	Dustin Garlinger Debby Keel
PRODUCTION ASSISTANTS	Annie Hunt Marj Morgan Judy Neuwenschwander
PHOTOGRAPHY SUPERVISOR	Tammy Christian
PHOTOGRAPHER	Matthew Owen
PHOTO STYLISTS	Tammy Liechty Tammy Steiner
MAKEUP ARTIST/HAIR STYLIST	Michelle Kister
CHIEF EXECUTIVE OFFICER	David McKee
EXECUTIVE VICE PRESIDENT	Michele Fortune
PUBLISHER	Mike Klansek
MAGAZINE MARKETING DIRECTOR	Scott Moss

HOW TO CONTACT US

Internet: Crochet-World.com
Mail: *Crochet World*, P.O. Box 9001,
Big Sandy, TX 75755
Email: Customer_Care@Crochet-World.com
Telephone: (800) 829-5865
Include your full name, mailing address
and daytime phone number.

ADVERTISING

Advertising Sales Director: Michelle Thorpe
(260) 849-4508

email: Michelle_Thorpe@Annies-Publishing.com
Advertising Account Manager: Joan Lynch Luckett
(260) 849-4504
email: JoanLynch_Luckett@Annies-Publishing.com

Responsibility for advertised products lies with the advertisers. *Crochet World* will not knowingly publish fraudulent materials and is not liable for any damages arising from the purchase or use of any products. If you have any consumer complaints concerning goods purchased from our advertisers, please send us written notification to aid our screening process.

CROCHET WORLD (ISSN 0164-7962, USPS 511-570) is published bimonthly by Annie's, 306 East Parr Road, Berne, IN 46711, (260) 849-4874. Periodicals postage paid at Berne, Ind., and additional mailing offices.

POSTMASTER: Send change of address to *Crochet World*, P.O. Box 9001, Big Sandy, TX 75755. Canada Post International Publications Mail Product (Canadian Distribution) Sales Agreement Number 40012306. Printed in USA. GST Account Number 13541 4274 RT. Copyright © 2014 Annie's. All rights reserved. This publication may not be reproduced in part or in whole without written permission from the publisher.

SUBSCRIPTIONS: \$24.97 + \$1.98 p/p per year in USA, \$24.97 + \$9.98 p/p elsewhere, U.S. funds only. To subscribe, see Crochet-World.com or write to *Crochet World*, P.O. Box 9001, Big Sandy, TX 75755.

RETAIL STORES: If you are not presently being provided copies of this magazine by your area newsstand wholesaler, visit us at AnniesWSL.com.



From the publishers of *Country Sampler*

prairie style

The New AMERICAN COUNTRY

NEW!



Prairie Style, a new, large-format publication from *Country Sampler*, celebrates an up-and-coming American decorating style that honors the creativity, resourcefulness and sense of pride that comes with this relaxed and inviting way of life. You'll enjoy:

- ◆ Traditional homesteads
- ◆ Historic cottages
- ◆ Rustic farmhouses
- ◆ Converted barns
- ◆ Pastoral retreats, and more!

Limited quantities available

Country Sampler's Prairie Style

Mail this form with payment to:
Country Sampler, P.O. Box 8561, Big Sandy, TX 75755

Name _____ CM01218

Address _____

City _____ State _____ ZIP _____

E-mail _____ Phone _____

Method of Payment:

☐ Payment enclosed
(make check payable to Country Sampler)

QTY	PRODUCT	PRICE	TOTAL
	Country Sampler's Prairie Style C61SP14	\$9.99	
	Subtotal		
	*Shipping/Handling		
	Total		

Credit card orders, call 800-829-0425
or visit www.samplermagazines.com.

*Add \$4.95 s/h per order. U.S. orders only.
Canadian orders add \$6.00 s/h U.S. per order.
Allow 4-6 weeks for delivery.



144 pages

**Reserve now.
Just \$9.99 plus s/h**

C61SP14

On newsstands May 2014. Country Sampler's Prairie Style is not included in a Country Sampler subscription.

Spring Bouquet Shawl

Design by Shari White

1 2 3 4 5 6 INTERMEDIATE

FINISHED MEASUREMENTS

20 inches wide x 68 inches long

MATERIALS

- Crystal Palace Yarns Mini Mochi super fine (fingering) weight merino wool/nylon yarn (1¾ oz/195 yds/50g per ball):
9 balls #111 baby face
- Size E/4/3.5mm crochet hook or size needed to obtain gauge
- Tapestry needle
- Matching thread and needle
- 12mm iridescent crystal beads: 182
- Scissors



GAUGE

Motif picot to picot = 3 inches in diameter

PATTERN NOTES

Weave in loose ends as work progresses.

Join with slip stitch as indicated unless otherwise stated.

Chain-3 at beginning of round counts as first double crochet unless otherwise stated.

Chain-4 at beginning of round counts as first treble crochet unless otherwise stated.

Chain-4 at beginning of row counts as first double crochet and chain-1 unless otherwise stated.

SPECIAL STITCH

Picot: Ch 5, sl st in first ch of ch-5.



The flowers in this spectacular shawl are connected with lacy, diamond-shaped motifs. Hand-painted-look yarn creates a gorgeous color palette and iridescent crystals add sparkling dazzle to the flowers.

SHAWL

MOTIFS OF ROW 1

Motif 1

Rnd 1 (RS): Ch 10, **join** (see *Pattern Notes*) in first ch to form a ring, **ch 3** (see *Pattern Notes*), 17 dc in ring, join in beg ch-3. (18 dc)

Rnd 2: Ch 4 (see *first ch-4 reference in Pattern Notes*), 3 tr in same sp, **picot** (see *Special Stitch*), 3 tr in next dc, ch 4, sl st in next dc, *(sl st, ch 4, 3 tr, picot) in next dc, 3 tr in next dc, ch 4, sl st in next dc, rep from * 4 times. Fasten off. (6 petals)

Motif 2

Rnd 1: Ch 10, join in first ch to form a ring, ch 3, 17 dc in ring, join in beg ch-3. (18 dc)

Rnd 2: Ch 4, 3 tr in same sp, ch 2, sl st in any picot of Motif 1, ch 2, sl st in first ch of ch-2 of Motif 2 (*joining picot completed*), 3 tr in next dc of Motif 2, ch 4, sl st in next dc, 3 tr in next dc, ch 4, sl st in next dc, *(sl st, ch 4, 3 tr, picot) in next dc, 3 tr in next dc,

ch 4, sl st in next dc, rep from * 4 times. Fasten off. (6 petals)

Motifs 3-7

Rnd 1: Ch 10, join in first ch to form a ring, ch 3, 17 dc in ring, join in beg ch-3. (18 dc)

Rnd 2: Working clockwise from first join of previous Motif, sk next 2 petals, ch 4, 3 tr, ch 2, sl st in next picot sp of previous Motif, ch 2, sl st in first ch of ch-2 (*joining picot completed*), 3 tr in next dc, ch 4, sl st in next dc, *(sl st, ch 4, 3 tr, picot) in next dc, 3 tr in next dc, ch 4, sl st in next dc, rep from * 4 times. Fasten off. (6 petals)

MOTIFS OF ROW 2

Motif 1

Rnd 1 (RS): Ch 10, join in first ch to form a ring, ch 3, 17 dc in ring, join in beg ch-3. (18 dc)

Rnd 2: [(Ch 4, 3 tr, ch 2, sl st in picot of row below, ch 2, sl st in first ch of ch-2 (*joining picot completed*), 3 tr in next dc, ch 4, sl st in next dc] twice, *(sl st, ch 4, 3 tr, picot) in next dc, 3 tr

Continued on page 55

Meet the Winner

Shari White

My name is Shari White, and I've been "hooked" since I made my first granny square at the age of 12. I've always designed, making blankets, sweaters and toys for my six sons when they were very young. As they've grown, they now make the requests of what they want.

I got my start as a designer in 2007 at the Knit & Crochet Show at a meet and greet. Since then, I've had over 40 designs published with several more to be published in 2014. I really love to design scarves, throws and shawls.

I'm married to a great husband who lets me pursue my passion for crochet. We're raising five sons in New Jersey and another son who's married and pursuing his Ph.D. I'm also working full time in New York City selling newspaper advertising.

I'm an active professional member of Crochet Guild of America (CGOA) and the current president of the New York City Crochet Guild.



How to Contact Us

For assistance concerning your subscription or any other questions, our Customer Service representatives are ready to assist you by whichever means are most convenient for you.

For online subscription assistance, go to

Crochet-World.com

Select Customer Care to:

- Subscribe
- Renew your subscription
- Pay your bill
- Check your account status (expiration and latest payment)
- Change your address or email address
- Report a duplicate issue
- Report a missing or damaged issue

Mail subscription questions to:

Crochet World magazine
P.O. Box 9001
Big Sandy, TX 75755

Email:

Customer_Care@Crochet-World.com

Call us Monday-Friday, 8 a.m.–

7 p.m. CT, Saturday, 7 a.m.–5 p.m.

CT and Sunday, 9 a.m.–5 p.m. CT.

Please have your address label, renewal or billing invoice handy.
(800) 829-5865

For Pattern Services:

Revisions: Crochet-World.com

Write: Crochet Pattern Services

306 East Parr Road, Berne, IN 46711

Email: Editor@Crochet-World.com

Call: (260) 849-4874, weekdays

The Crochet World guarantee:

If, for any reason, you're not completely satisfied with *Crochet World* magazine, you can cancel your subscription and receive a full and immediate refund of the entire subscription price. No questions asked.

Mailing Lists:

From time to time we make our subscriber list available to companies that sell goods and services by mail that we believe would interest our readers. If you would rather not receive such mailings, please send your current mailing label or an exact copy to *Crochet World*, Mail Preference Service, P.O. Box 9001, Big Sandy, TX 75755.

If the post office alerts us that your magazine is undeliverable, we have no further obligation unless we receive a corrected address within two years.

Fun in the Sun Hat

Design by Katherine Eng

1 2 3 4 5 6 **CONFIDENT BEGINNER**

FINISHED MEASUREMENTS

10½ inches in diameter

MATERIALS

- Lion Brand Kitchen Cotton medium (worsted) weight cotton yarn (2 oz/99 yds/57g per skein):
2 skeins #157 citrus
1 skein each #130 snap pea and #148 tropic breeze
- Size H/8/5mm crochet hook or size needed to obtain gauge
- Tapestry needle



GAUGE

13 sc = 4 inches; 14 rnds = 4 inches

PATTERN NOTES

For a smaller size hat, use a G/6/4mm hook.

Weave in loose ends as work progresses.

Join with slip stitch as indicated unless otherwise stated.

Chain-3 at beginning of round counts as first double crochet unless otherwise stated.

SPECIAL STITCHES

Shell: 5 dc in indicated st.

Beginning large shell (beg lg shell): Ch 3 (see *Pattern Notes*), 6 dc in indicated st.

Large shell (lg shell): 7 dc in indicated st.

HAT

Rnd 1 (RS): With citrus, ch 4, join (see *Pattern Notes*) in first ch to form ring, ch 1, 8 sc in ring, join in beg sc. (8 sc)



Bright, cheery colors combined with basic stitches create this cute, easy hat. It looks great with or without the flower.

Rnd 2: Ch 1, 2 sc in same st as beg ch-1, 2 sc in each rem st around, join in beg sc. (16 sc)

Rnd 3: Ch 1, 2 sc in same st as beg ch-1, sc in next st, *2 sc in next st, sc in next st, rep from * around, join in beg sc. (24 sc)

Rnd 4: Ch 1, 2 sc in same st as beg ch-1, sc in each of next 2 sts, *2 sc in next st, sc in each of next 2 sts, rep from * around, join in beg sc. (32 sc)

Rnd 5: Ch 1, sc in each st around, join in beg sc.

Rnd 6: Ch 1, 2 sc in same st as beg ch-1, sc in each of next 3 sts, *2 sc in next st, sc in each of next 3 sts, rep from * around, join in beg sc. (40 sc)

Rnd 7: Ch 1, 2 sc in same st as beg ch-1, sc in each of next 4 sts, *2 sc in next st, sc in each of next 4 sts, rep from * around, join in beg sc. (48 sc)

Rnd 8: Rep rnd 5.

Rnd 9: Ch 1, 2 sc in same st as beg ch-1, sc in each of next 5 sts, *2 sc in next st, sc in each

of next 5 sts, rep from * around, join in beg sc. (56 sc)

Rnd 10: Ch 1, 2 sc in same st as beg ch-1, sc in each of next 6 sts, *2 sc in next st, sc in each of next 6 sts, rep from * around, join in beg sc. (64 sc)

Rnd 11: Rep rnd 5.

Rnd 12: Ch 1, 2 sc in same st as beg ch-1, sc in each of next 7 sts, *2 sc in next st, sc in each of next 7 sts, rep from * around, join in beg sc. (72 sc)

Rnd 13: Rep rnd 5. Fasten off.

Rnd 14: With RS facing, join snap pea with sc in any st, sc in each rem st around, join in beg sc.

Rnds 15–17: Ch 1, sc in each st around, join in beg sc. At end of last rnd, fasten off.

Rnds 18–21: With tropic breeze, rep rnds 14–17.

Rnd 22: With citrus, rep rnd 14.

Rnd 23: Ch 1, sc in same st as beg ch-1, ch 1, sk next st, *sc in next st, ch 1, sk next st, rep from * around, join in beg sc. (36 sc, 36 ch-1 sps)

Rnd 24: Ch 1, sc in same st as beg ch-1, sc in next ch-1 sp, *sc in next st, sc in next ch-1 sp, rep from * around, join in beg sc. (72 sc)

Rnd 25: Ch 1, sc in same st as beg ch-1, sk next 2 sts, **shell** (see *Special Stitches*) in next st, sk next 2 sts, *sc in next st, sk next 2 sts, shell in next st, sk next 2 sts, rep from * around, join in beg sc. (12 sc, 12 shells)

Rnd 26: Beg **lg shell** (see *Special Stitches*) in same st as joining, sc in center dc of next shell, ***lg shell** (see *Special Stitches*) in next sc, sc in center dc of next shell, rep from * around, join in 3rd ch of beg ch-3. (12 sc, 12 lg shells)

Rnd 27: Sl st in each of next 3 dc, ch 1, sc in same st as last sl st made, lg shell in next sc, *sc in center dc of next lg shell,

lg shell in next sc, rep from * around, join in beg sc.

Rnd 28: Ch 1, sc in same st as beg ch-1 and in each of next 2 sts, (sc, ch 2, sc) in next st, *sc in each of next 7 sts, (sc, ch 2, sc) in next st, rep from * 10 times, sc in each of last 4 sts, join in beg sc. Fasten off. (84 sc, 12 ch-2 sps)

FLOWER

Rnd 1 (RS): With tropic breeze, ch 5, join in first ch to form ring, ch 1, 10 sc in ring, join in beg sc. (10 sc)

Rnd 2: Ch 1, (sc, ch 2, sc) in same st as beg ch-1, sl st in next st, *(sc, ch 2, sc) in next st, sl st in next st, rep from * around, join in beg sc. Fasten off. (10 sc, 10 ch-2 sps, 5 sl sts)

Rnd 3: With RS facing, join citrus with sc in first st of rnd 2,



(hdc, 3 dc, hdc) in next ch-2 sp, sc in next sc, sl st in next sl st, *sc in next sc, (hdc, 3 dc, hdc) in next ch-2 sp, sc in next sc, sl st in next sl st, rep from * around, join in beg sc. Leaving long end for sewing, fasten off.

FINISHING

Using long end, sew Flower through rnd 2 over strips along joining seam on Hat. **CW**




OMEGA y TAMM
fine yarns




For all seasons to knit and crochet is a pleasure with
OMEGA, ESPIGA and TAMM.




Find a great variety of options and vibrant colors in
*more than 60 acrylic different TAMM yarns
*more than 30 different cotton OMEGA yarns
OMEGA leader manufacturer of all kinds of yarns

HILOS OMEGA Callejón San Antonio Abad No. 23, Col. Tránsito, México D.F.,
06820, Ph: 011 52 55 55228660 al 64 e-mail: orden@hilosomega.com.mx
www.hilosomega.com.mx www.creativeyarnsource.com Made in Mexico

Citrus Drops Table Set

Designs by Debra Arch

1 2 3 4 5 6 INTERMEDIATE

FINISHED MEASUREMENTS

Place Mat: 13¼ inches in diameter

Coaster: 4⅝ inches in diameter

MATERIALS

- Tahki Cotton Classic light (DK) weight cotton yarn (1¾ oz/108 yds/50g per hank):
 - 4 hanks #3001 white
 - 1 hank each #3401 light bright orange, #3726 bright lime green, #3533 bright yellow and #3458 hot pink
- Sizes C/2/2.75 and F/5/3.75mm crochet hooks or sizes needed to obtain gauge
- Tapestry needle
- Rustproof straight pins
- Steam iron
- Ironing surface



Buy this
YARN NOW!
Annie'sCatalog.com

GAUGE

Size C hook: 6 sc = 1 inch; 2 sc rows = ½ inch; 6 hdc = 1 inch; 4 hdc rows = 1 inch; 6 dc = 1 inch; 2 dc rows = ¾ inch

Size F hook: 5 sc = 1 inch; 1 sc row = ¼ inch; 4 hdc = 1 inch; 2 hdc rows = ¾ inch; 4 dc rows = 1 inch; 2 dc rows = 1 inch; 4 tr = 1 inch; 3 tr rows = 1½ inches

PATTERN NOTES

Weave in loose ends as work progresses.

Join with slip stitch as indicated unless otherwise stated.

Chain-4 at beginning of row counts as first treble crochet unless otherwise stated.

Chain-3 at beginning of row counts as first double crochet unless otherwise stated.

Chain-2 at beginning of row counts as first half double crochet unless otherwise stated.

SPECIAL STITCHES

See illustrations on page 57.

First foundation single crochet (first foundation sc):

Insert hook in 2nd ch from hook, yo, draw lp through, yo, draw through 1 lp on hook (*see illustration A—base ch completed*), yo, draw through 2 lps on hook (*see illustrations B and C—sc completed*).

Next foundation single crochet (next foundation sc):

*Insert hook in base ch just completed, yo, draw lp through, yo, draw through 1 lp on hook (*base ch completed*), yo, draw through 2 lps on hook (*sc completed*), rep from * until desired number of sts has been completed.

Next foundation half double crochet (next foundation hdc):

*Yo, insert hook in last base ch completed, yo, draw lp through, yo, draw through 1 lp on hook (*base ch*), yo, draw through all 3 lps on hook (*hdc completed*), rep from * until desired number of sts has been completed.

Next foundation double crochet (next foundation dc):

*Yo, insert hook in last base ch completed, yo, draw lp through, yo, draw through 1 lp on hook (*base ch*), yo, draw through 2 lps on hook, yo, draw through last 2 lps on hook (*dc completed*), rep from * until desired number of sts has been completed.

PLACE MAT

Make 1 each with light bright orange, bright lime green, bright yellow & hot pink.

CENTER

Rnd 1 (RS): With size F hook and white, ch 2, 8 sc in 2nd ch from hook, **join** (*see Pattern Notes*) in beg sc. (8 sc)

Rnd 2: Ch 1, 2 sc in each sc around, join in beg sc. (16 sc)

Rnd 3: Ch 1, 2 sc in first sc, sc in next sc, [2 sc in next sc, sc in next sc] around, join in beg sc. Fasten off. (24 sc)

FIRST SLICE

Row 1 (RS): Draw up lp light bright orange in **back lp** (*see Stitch Guide*) of any sc of rnd 3, ch 2, sc in 2nd ch from hook, **first foundation sc** (*see Special Stitches*) in same ch as first sc, work 2 more **next foundation sc** (*see Special Stitches*), work 4 **next foundation hdc** (*see Special Stitches*), work 5 **next foundation dc** (*see Special Stitches*), 4 dc in base ch of last foundation dc made, working on opposite side of foundation ch, work 1 dc in each of next 4 chs, hdc in each of next 4 chs, sc in each of next 4 chs, join in same back lp as beg st, turn. (29 sts)

Row 2: Do not ch 1, sc in each of next 4 sc, hdc in each of next 4 hdc, dc in each of next 5 dc, 5 dc in next dc, 3 dc in next dc, 5 dc in next dc, dc in each of next 5 dc, hdc in each of next 4 hdc, sc in each of next 4 sc, join in same sp as last sl st join of previous row. Fasten off. (39 sts)

2ND SLICE

Row 1 (RS): Sk next 2 sc of rnd 3, join light bright orange in next sc, rep row 1 of First Slice.

Row 2: Rep row 2 of First Slice.



Cool down the summer heat and set a refreshing table with colorful place mats and coasters stitched in yummy citrus colors.

3RD-8TH SLICES

Rows 1 & 2: Rep rows 1 and 2 of 2nd Slice.

FIRST WHITE SPOKE

Row 1: With WS of Slices facing and working in back lps only of row 2 of Slices, sk first 23 sts on right edge of Slice, join white to back lp of next dc, **ch 4** (see

Pattern Notes), tr in same st, 2 tr in next st, dc in each of next 6 sts, hdc in each of next 4 sts, sc in each of next 4 sts, **sc dec** (see *Stitch Guide*) in back lp of next 2 sk sts of rnd 3, turn and working up right side of next slice, sc in each of next 4 sts, hdc in each of next 4 sts, dc in each of next 6 sts, 2 tr in each of next 2 sts, turn to WS.

Row 2 (Spoke joining): Fold last row RS tog, with beg ch-4 of last row behind last tr made and working through both thicknesses, insert hook through closest lp of first tr of front layer and in 4th ch of beg ch-4 of back layer, yo and draw through lp on hook to complete sl st, [ch 1, insert hook in closest lp of next

Continued on page 56

Farm Animal Stools: Cow

Design by Alessandra Hayden

1 2 3 4 5 6 EASY

FINISHED MEASUREMENT

Fits 11-inch-diameter stool

MATERIALS

- Red Heart Anne Geddes Baby light (light worsted) weight acrylic/nylon yarn (3½ oz/340 yds/100g per ball):
 - 2 balls #0100 lily
 - 1 ball each #0702 Rosie, #0112 night-night, #0301 teddy, #0261 tangerine, #0226 bumble and #0691 grass
- Sizes G/6/4mm and I/9/5.5mm crochet hooks or size needed to obtain gauge
- Tapestry needle
- Sewing needle
- White sewing thread
- Hot-glue gun
- Stitch marker
- 20mm black buttons: 2
- Wooden stool: 11 inches in diameter



GAUGE

Size I hook & 2 strands yarn: 7 sc rnds = 2 inches; 6 sc = 2 inches

PATTERN NOTES

Weave in loose ends as work progresses.

Do not join rounds unless otherwise stated; use stitch marker to mark rounds.

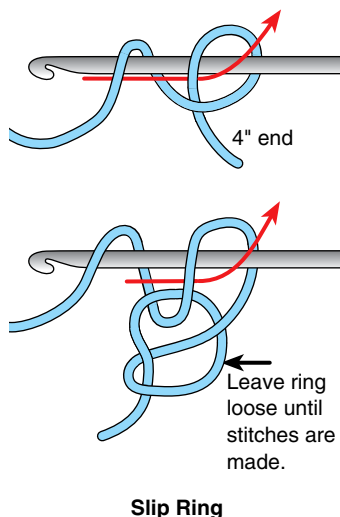
Join with slip stitch as indicated unless otherwise stated.

Chain-2 at beginning of round counts as first half double crochet unless otherwise stated.

STOOL COVER

HEAD

Rnd 1 (RS): With size I hook and 2 strands lily held tog, make a **slip ring** (see illustration), 10 sc in slip ring, place marker, do not join. (10 sc)



Slip Ring

Rnd 2: 2 sc in each sc around. (20 sc)

Rnd 3: Sc in each sc around.

Rnd 4: [2 sc in next sc, sc in next sc] around. (30 sc)

Rnd 5: Rep rnd 3.

Rnd 6: [2 sc in next sc, sc in each of next 2 sc] around. (40 sc)

Rnd 7: Rep rnd 3.

Rnd 8: [2 sc in next sc, sc in each of next 3 sc] around. (50 sc)

Rnd 9: Rep rnd 3.

Rnd 10: [2 sc in next sc, sc in each of next 4 sc] around. (60 sc)

Rnd 11: Rep rnd 3.

Rnd 12: [2 sc in next sc, sc in each of next 5 sc] around. (70 sc)

Rnd 13: Rep rnd 3.

Rnd 14: [2 sc in next sc, sc in each of next 6 sc] around. (80 sc)

Rnd 15: Rep rnd 3.

Rnd 16: [2 sc in next sc, sc in each of next 7 sc] around. (90 sc)

Rnd 17: Rep rnd 3.

Rnd 18: [2 sc in next sc, sc in each of next 8 sc] around. (100 sc)

Rnd 19: Rep rnd 3.

Rnd 20: Working in **back lps** (see *Stitch Guide*) sc in each st around, **join** (see *Pattern Notes*) in beg sc.

Rnds 21–25: Rep rnd 3.

Rnd 26: [Sc in each of next 8 sc, **sc dec** (see *Stitch Guide*) in next 2 sc] around. (90 sc)

Rnd 27: [Sc in each of next 7 sc, sc dec in next 2 sc] around. Fasten off. (80 sc)



What child wouldn't be enchanted with these adorable animal stool covers? We begin this three-part series with a darling cow. The pig and chick will follow in the next two issues, respectively.



Bright Idea

Turn these cute stool covers into adorable pillows! Work two pieces for the Head through Rnd 19, sew together and stuff. Decorate one side with the animal features.

BOW

Row 1: With size G hook and 1 strand tangerine, ch 5, sc in 2nd ch from hook, sc in each of next 3 chs, turn. (4 sc)

Rows 2–24: Ch 1, sc in each of next 4 sc, turn.

Rnd 25: Now working in rnds, ch 1, work 1 sc in side edge of each row, holding row 24 to opposite side of foundation ch and working through both thicknesses, sl st across, ch 1, working in opposite ends of rows, sc in each of next 24 rows, **join** (see *Pattern Notes*) in beg sc, leaving a 12-inch length, fasten off.

With joining first and last rows at center back, wrap rem length of yarn around Bow center tightly 10 times, secure end at center back. Fasten off.

EAR

Make 2.

Row 1: With size I hook and 2 strands Rosie, beg at bottom of Ear, ch 7, sc in 2nd ch from hook, sc in each rem ch across, turn. (6 sc)

Rows 2–5: Ch 1, sc in each sc across, turn.

Row 6: Ch 1, sc dec in next 2 sc, sc in each of next 2 sc, sc dec in next 2 sc, turn. (4 sc)

Row 7: Ch 1, [sc dec in next 2 sc] twice. Fasten off. (2 sc)

Trim

Rnd 8: Now working in rnds, with size I hook, join 2 strands lily in opposite side of foundation ch, ch 1, sc in each of next 6 chs, sc in side edge of each of next 6 rows, sc in each of next 2 sc of row 7, sc in side edge of each of next 6 rows, join in first sc. (20 sc)

Rnd 9: Ch 1, sc in each sc around, join in first sc, leaving 12-inch length of yarn, fasten off.

Pinch bottom of Ear and with rem length sew to rnd 21 of Head. Sk next 18 sc of rnd 21 and sew 2nd Ear to Head.

Glue Bow at base of right Ear.

LARGE SPOT

Make 2.

Rnd 1: With size G hook and 1 strand night-night, ch 13, sc in 2nd ch from hook, sc in each of next 10 chs, 3 sc in last ch,

working on opposite side of foundation ch, sc in each of next 10 chs, 2 sc in same ch as beg sc, join in beg sc. (26 sc)

Rnd 2: Ch 1, 2 sc in first sc, sc in each of next 10 sc, 2 sc in each of next 3 sc, sc in each of next 10 sc, 2 sc in each of next 2 sc, join in beg sc. (32 sc)

Rnd 3: Ch 1, 2 sc in next sc, sc in each of next 11 sc, [2 sc in next sc, sc in next sc] 3 times, sc in each of next 10 sc, [2 sc in next sc, sc in next sc] twice, join in beg sc. (38 sc)

Rnd 4: Ch 1, 2 sc in next sc, sc in each of next 12 sc, [2 sc in next sc, sc in each of next 2 sc] 3 times, sc in each of next 10 sc, [2 sc in next sc, sc in each of next 2 sc] twice, join in beg sc. Fasten off. (44 sc)

Glue first Large Spot at base of left Ear and 2nd Large Spot over rnds 22–27 just off center at base of Head.

SMALL SPOT

Make 2.

Rnd 1: Rep rnd 1 of Large Spot.

Rnd 2: Rep rnd 2 of Large Spot. Fasten off.

Glue first Small Spot to right side of Head over rnds 15–19 and 2nd Small Spot to left side of Head over rnds 21–25.

NOSE

Row 1: With size G hook and 1 strand teddy, ch 14, sc in 2nd ch from hook, sc in next 12 chs, turn. (13 sc)

Rows 2–4: Ch 1, sc in each sc across, turn.

Row 5: Ch 1, sc in each of next 4 sts, hdc in next st, dc in each of next 3 sts, hdc in next st, sc in each of next 4 sts. Fasten off. (13 sts)

Row 6: Working on opposite side of foundation ch, join teddy in first ch, [sk next 2 chs, 5 dc in



next ch, sk 2 chs, sl st in next ch] twice, do not turn.

Rnd 7: Now working in rnds, working around outer edge of Nose, ch 1, sc in each st and each row around outer edge, join in beg sc. Fasten off. Set aside.

FLOWER

Rnd 1: With size G hook and 1 strand tangerine, ch 5, join to form a ring, **ch 2** (see *Pattern Notes*), 14 hdc in ring, join in top of beg ch-2. Fasten off. (15 hdc)

Rnd 2: Join bumble in any hdc, [ch 2, hdc in same st as ch-2, hdc in next st, hdc in next st, ch 2, sl st in same st, sl st in next st] 5 times. Fasten off. (5 petals)

Rnd 3: Join tangerine between petals of rnd 2, ch 2, [dc between petals into center beg ring of rnd 1, ch 3] around, join in beg dc. (5 ch-3 sps)

Rnd 4: (Sl st, 4 dc, sl st) in each ch-3 sp around. Fasten off. (5 petals)

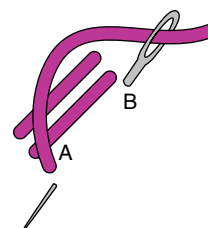
STEM

Row 1: With size G hook and 1 strand grass, ch 40, 2 sc in 2nd ch from hook, 2 sc in each of next 9 chs, sc in each of next 10 chs, ch 5, sl st in 2nd ch from hook, sc in next ch, hdc in next ch, dc in next ch (*leaf made*), sc in each rem ch of beg foundation ch. Fasten off.

FINISHING

Using photo as a guide, position Nose at center of Head over rnds 1–11, position Leaf at left side of Nose and pass Stem under Nose with 10 sc back out left edge of Nose. Glue Nose, Leaf and 10 sc of Stem to Head, leaving beg of Stem free. Glue Flower on glued end of Stem.

For Nostrils thread a double strand of night-night on tapestry needle; embroider a **straight stitch** (see illustration) at a slight inward angle on each side of Nose.



Straight Stitch

EYE

Make 2.

With sewing thread and needle, sew Eyes over rnd 6 of Head leaving 1½-inch sp between buttons.

Optional Eyes: With size G hook and 1 strand night-night, ch 2, 10 sc in 2nd ch from hook, join in beg sc. Fasten off. Glue to Head as for buttons.

With double length of night-night, embroider ¾-inch Eyebrows over rnd 9 of Head at a slight angle.

Place cover over stool. **cw**

Lizbeth
Premium thread for all needle arts!

Request a free catalog at www.lizbeththread.com

- ⌘ **Sizes:**
10, 20, 40, 80
in 189 colors
- ⌘ **100% Egyptian Cotton Thread**
- ⌘ **Size 3**
in 90 colors
- ⌘ **Colorfast!**
- ⌘ **NEW Twirlz**
in Size 20

Twirlz
A Designers Combination of Three Plied Colors

Lizbeth
Thread Holder

Keep thread clean, neat, and handy!

Learn Needle Tatting Step-by-Step!

Beautiful, Versatile, Easy to Master!

Needle Tatting

Handy Hands, Inc.
578 N 1800 E • Paxton, IL 60957
www.hhtatting.com • Ph: (217) 379-3802 • M-F 9-5 CT

Reel of Cables Shell

Design by Bonnie Barker

1 2 3 4 5 6 INTERMEDIATE

FINISHED SIZES

Instructions given fit 28–30-inch bust (*X-small*); changes for 32–34-inch bust (*small*), 36–38-inch bust (*medium*), 40–42-inch bust (*large*), 44–46-inch bust (*X-large*) and 48–50-inch bust (*2X-large*) are in [].

FINISHED MEASUREMENT

Bust: 32 inches (*X-small*), [36 inches (*small*), 40 inches (*medium*), 44 inches (*large*), 48 inches (*X-large*) and 52 inches (*2X-large*)]

MATERIALS

- Berroco Weekend DK light (DK) weight acrylic/cotton yarn (3½ oz/268 yds/100g per hank):

5 [5, 6, 6, 7, 7]
hanks #2974
parrot green

- Size G/6/4mm crochet hook or size needed to obtain gauge
- Yarn needle



Buy this
YARN NOW!
Annie'sCatalog.com

GAUGE

4 sts [sc, dc] twice = 1 inch; 7 rows [sc, dc] = 2 inches

PATTERN NOTES

Weave in loose ends as work progresses.

To keep stitch pattern consistent, be sure to work sc in each dc of previous row and dc in each sc of previous row unless otherwise stated.

Join with slip stitch as indicated unless otherwise stated.

Chain-2 at beginning of rounds **does not** count as first double crochet unless otherwise stated.

SHELL

COLLAR

Rnd 1 (RS): Ch 88, [92, 96, 104, 108, 112] **join** (see *Pattern Notes*) to form a ring being careful not to twist, **ch 2** (see *Pattern Notes*), dc in each ch around, join in beg ch-2. (88 [92, 96, 104, 108, 112] dc)

Rnd 2: Ch 2, [sk next 2 sts, **fp**tr (see *Stitch Guide*) in next 2 sts, fptr in 2 sk sts, 2 dc between dc just worked and next dc] around, join in beg ch-2, turn. (132 [138, 144, 156, 162, 168] sts)

Rnd 3: Ch 2, [2 dc in each of next 2 dc, **bpdc** (see *Stitch Guide*) in next 4 sts] around, join in beg ch-2, turn. (176 [184, 192, 208, 216, 224] dc)

Rnd 4: Ch 2, [sk next 2 sts, fptr in next 2 sts, fptr in 2 sk sts] around, join in beg ch-2, turn.

Rnd 5: Ch 2, bpdc around each st, join in beg ch-2, turn.

Rnds 6–11: [Rep rows 4 and 5 alternately] 3 times. At the end of row 11, **do not** fasten off.

FRONT

Row 1 (RS): Now working in rows, ch 1, [sc in next st, dc in next st] across 56, [60, 64, 68, 72, 76] sts or sts of 14 [15, 16, 17, 18, 19] cables, turn.

Row 2: Ch 1, [sc in next dc, dc in next sc] across, turn.

Row 3: Rep row 2.

Row 4: Inc in first 2 sts by working [sc, dc] in each st, [sc in next dc, dc in next sc] across to last 2 sts, work [sc, dc] in each of last 2 sts (*4 inc sts*), turn. (60 [64, 68, 72, 76, 80] sts)

Stitch Video!

Watch our video tutorial of the four-stitch cable at Crochet-World.com!

Row 5: Rep row 2.

Row 6: Rep row 4. (64 [68, 72, 76, 80, 84] sts)

Rows 7–9: Rep row 2. At the end of row 9, fasten off. (64 [68, 72, 76, 80, 84] sts)

BACK

Row 1: Starting from the last st of row 1 of Front, sk 9 [9, 9, 10, 10, 10] cables **OR** 36 [36, 36, 40, 40, 40] sts, join with sl st in next st, [sc in next dc, dc in next sc] across 48 [52, 56, 60, 64, 68] sts **OR** 12 [13, 14, 15, 16, 17] cables, turn.

Row 2: Ch 1, [sc in next dc, dc in next sc] across, turn. (48 [52, 56, 60, 64, 68] sts)

Row 3: Rep row 2.

Row 4: Inc in first 2 sts by working [sc, dc] in each st, [sc in next dc, dc in next sc] across to last 2 sts, work [sc, dc] in each of last 2 sts, (*4 st inc made*), turn. (52 [56, 60, 64, 68, 72] sts)

Row 5: Rep row 2.

Row 6: Rep row 4. (56 [60, 64, 68, 72, 76] sts)

Rows 7 & 8: Rep row 2.

Row 9: (*This row will join the Back to the Front on 1 side*), [sc in next dc, dc in next sc] across 56, [60, 64, 68, 72, 76] sts, ch 0 [0, 4, 8, 12, 16] join with sl st to first st of row 9 of Front of Shell, turn.

Rnd 10: Now working in rnds, ch 1, [sc in next ch, dc in next ch]

Cool cotton-blend yarn with comfortable stretch gives flattering shape to this attractive shell. A four-stitch cable pattern adds interesting detail at the hem and yoke.



Sized
to
2X



0 [0, 2, 4, 6, 8] times, [sc in next dc, dc in next sc] across 56 [60, 64, 68, 72, 76] sts, ch [0, 0, 4, 8, 12, 16] working on Front of Shell (*join to other side*), [sc in next dc, dc in next sc] across Front 60 [68, 72, 76, 80, 84] sts, join in first st of row. Front and Back of Shell are now connected. (116 [128, 144, 160, 176, 192] sts)

Rnd 11: Ch 1, [sc in next dc, dc in next sc] across 60 [68, 72, 76, 80, 84] sts, [sc in next ch, dc in next ch] 0 [0, 2, 4, 6, 8] times, [sc in next dc, dc in next sc] across 56 [60, 64, 68, 72, 76] sts, join in beg sc, turn. (116 [128, 144, 160, 176, 192] sts)

Rnd 12: Ch 1, [sc in each dc, dc in each sc] around, join in beg sc, turn.

Rnds 13–15: Rep rnd 12.

Sizes Medium, Large, X-Large & 2X-Large Only

Rnds [16 & 17, 16–20, 16–21, 16–23]: [Rep rnd 12] [2, 4, 6, 8] times, turn.

All Sizes

Rnd 16 [16, 18, 21, 22, 24]: Ch 1, **dec 1 st** (*see Stitch Guide*) in next 2 sts, [sc in next dc, dc in

next sc] across 52 [56, 64, 72, 80, 88] sts, dec 2 sts, [sc in next dc, dc in next sc] across 56 [64, 72, 80, 88, 96] sts, dec in last 2 sts, join in beg st, turn. (112 [124, 140, 156, 172, 188] sts)

Rnd 17 [17, 19, 22, 23 25]: Rep rnd 12.

Rnd 18 [18, 20, 23, 24, 26]: Ch 1, dec 1 st, [dc in next sc, sc in next dc] across 50 [54, 62, 70, 78, 86] sts, dec 2 sts, [sc in next dc, dc in next sc] across 54 [62, 70, 78, 86, 94] sts, dec in last 2 sts, join in beg st, turn. (108 [120, 136, 152, 168, 184] sts)

Rnd 19 [19, 21, 24, 25, 27]: Rep rnd 12.

Rnd 20 [20, 22, 25, 26, 28]: Ch 1, dec 1 st, [dc in next sc, sc in next dc] across 48 [52, 60, 68, 76, 84] sts, dec 2 sts, [sc in next dc, dc in next sc] across 52 [60, 68, 76, 84, 92] sts, dec in last 2 sts, join in beg st, turn. (104 [116, 132, 148, 164, 180] sts)

Rnd 21 [21, 23, 26, 27, 29]: Rep rnd 12.

Rnd 22 [22, 24, 27, 28, 30]: Ch 1, dec 1 st, [dc in next sc, sc in next dc] across 46 [50, 58, 66, 74, 82] sts, dec 2 sts, [sc in next dc, dc in next sc] across 50 [58, 66, 74, 82, 90] sts, dec in last 2 sts, join in beg st, turn. (100 [112, 128, 144, 160, 176] sts)

Rnd 23 [23, 25, 28, 29, 31]: Rep rnd 12.

Rnd 24 [24, 26, 29, 30, 32]: Ch 1, dec 1 st, [dc in next sc, sc in next dc] across 44 [48, 56, 64, 72, 80] sts, dec 2 sts, [sc in next dc, dc in next sc] across 48 [56, 64, 72, 80, 88] sts, dec in last 2 sts, join in beg st, turn. (96 [108, 124, 140, 156, 172] sts)

Rnds 25–28 [25–28, 27–30, 30–33, 31–34, 33–36]: Rep rnd 12.

Rnd 29 [29, 31, 34, 35, 37]: Ch 1, (sc, dc) in first st (*inc*), [sc in next dc, dc in next sc] in next 48 [56, 64, 72, 80, 88] sts, inc in

each of next 2 sts (*by working sc and dc in each st*), [sc in next dc, dc in next sc] across 44 [48, 56, 64, 72, 80] sts, (sc, dc) in last st (*inc*), join in beg st, turn. (100 [112, 128, 144, 160, 176] sts)

Rnd 30 [30, 32, 35, 36, 38]: Rep rnd 12.

Rnd 31 [31, 33, 36, 37, 39]: Ch 1, [dc, sc] in first st (*inc*), [dc in next sc, sc in next dc] in next 50, [58, 66, 74, 82, 90] sts, inc in each of next 2 sts (*by working [dc, sc] in each st*), [sc in next dc, dc in next sc] over next 46, [50, 58, 66, 74, 82] sts, (dc, sc) in last st, join in beg st, turn. (104 [116, 132, 148, 164, 180] sts)

Rnds 32 & 33 [32 & 33, 34 & 35, 37 & 38, 38 & 39, 40 & 41]: Rep rnd 12.

Rnd 34 [34, 36, 39, 40, 42]: Ch 1, [sc, dc] in first st (*inc*), [sc in next dc, dc in next sc] in next 48, [52, 60, 68, 76, 84] sts, inc in each of next 2 sts (*by working [sc, dc] in each st*), [sc in next dc, dc in next sc] in next 52, [60, 68, 76, 84, 92] sts, (sc, dc) in last st, join in beg st, turn. (108 [120, 136, 152, 168, 184] sts)

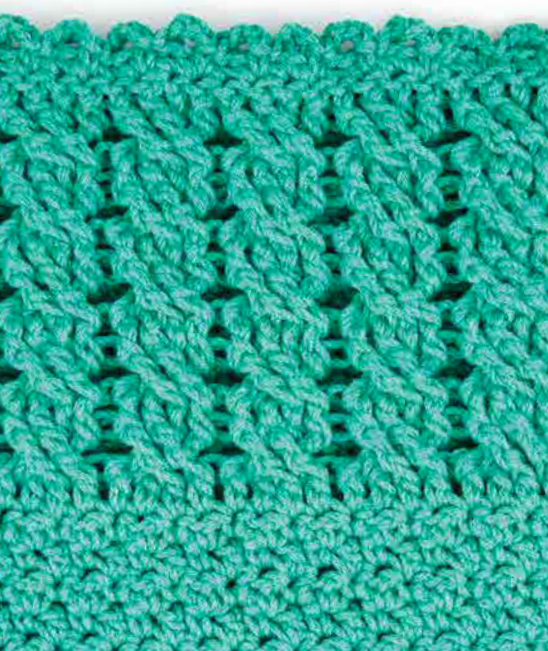
Rnds 35 & 36 [35 & 36, 37 & 38, 40 & 41, 41 & 42, 43 & 44]: Rep rnd 12.

Rnd 37 [37, 39, 42, 43, 45]: Ch 1, [dc, sc] in first st (*inc*), [dc in next sc, sc in next dc] in next 54, [62, 70, 78, 86, 94] sts, inc in each of next 2 sts (*by working [dc, sc] in each st*), [sc in next dc, dc in next sc] in next 50, [54, 62, 70, 78, 86] sts, (dc, sc) in last st, join in beg st, turn. (112 [124, 140, 156, 172, 188] sts)

Rnds 38 & 39 [38 & 39, 40 & 41, 43 & 44, 44 & 45, 46 & 47]: Rep rnd 12.

Rnd 40 [40, 42, 45, 46, 48]: Ch 1, [sc, dc] in first st (*inc*), [sc in next dc, dc in next sc] in next 52, [56, 64, 72, 80, 88] sts, inc in each of next 2 sts (*by working*

Continued on page 58



Available
as an online
class or
DVD!

Learn to Shuttle Tat
Instructor Janette Baker



Learn to Shuttle Tat

In this online video class you'll learn:

- About tatting materials and tools
- How to read tatting patterns and charts
- How to properly hold and wind the shuttle
- How to tat the double stitch, rings, picots, chain and more
- How to join rings together
- How to tat consecutive rings into pretty trims
- How to add beads to tatting and more

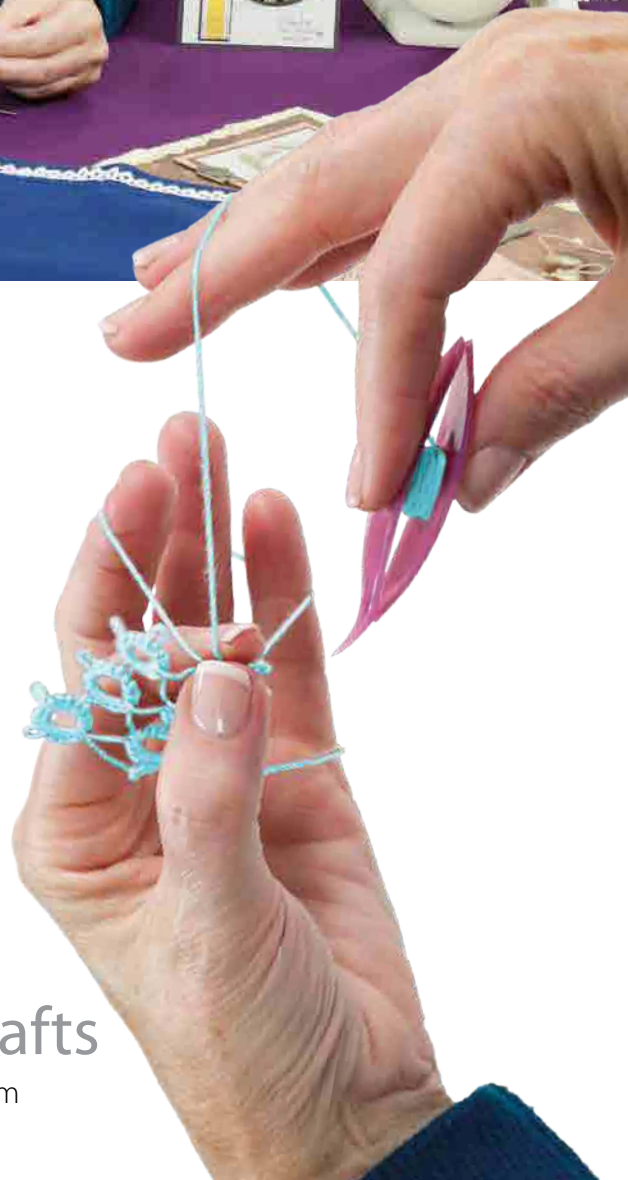
8

exclusive projects
included as part of
the class curriculum

Annie's® Crafts

AnniesOnlineClasses.com

NAV01 Learn to Shuttle Tat



Flower Petals Doily

Design by Agnes Russell

1 2 3 4 5 6 INTERMEDIATE

FINISHED MEASUREMENT

18 inches in diameter

MATERIALS

- Aunt Lydia's Classic Crochet size 10 crochet cotton (solids: 350 yds per ball):
 - 1 ball #672 olive
 - 250 yds #661 frosty green
 - 50 yds each #423 maize and #480 delft
- Size 7/1.65mm steel crochet hook or size needed to
- obtain gauge
- Tapestry needle



GAUGE

Flower: 4 inches in diameter;
4 dc rnds = 1 inch; 9 sc = 1 inch

PATTERN NOTES

Doily can be crocheted in 1 solid color using 2 balls color of choice.

The Flower Center rounds 1–7 are crocheted with maize forming the foundation of the flower. Rounds 8–10 are worked in flower color. If you wish to change the flower color, simply undo the flower color rounds 8–10 without affecting the structure of the Doily and replace with desired flower color. Weave in loose ends as work progresses.

Chain-5 at beginning of round counts as first double crochet and chain-2 unless otherwise stated.

Join with slip stitch as indicated unless otherwise stated.

Chain-3 at beginning of round counts as first double crochet unless otherwise stated.

Chain-4 at beginning of round counts as first double crochet and chain-1 unless otherwise stated.

Chain-6 at beginning of round counts as first double crochet and chain-3 unless otherwise stated.

SPECIAL STITCHES

Shell: (2 dc, ch 3, 2 dc) in indicated st or sp.

Beginning shell (beg shell): (Ch 3, dc, ch 3, 2 dc) in indicated st or sp.

DOILY

FIRST OUTER PETAL

Row 1: Beg at center with olive, ch 14, sc in 2nd ch from hook, sc in each of next 11 chs, 3 sc in last ch, working on opposite side of foundation ch, sc in each of next 12 chs, turn. (27 sc)

Row 2: Ch 1, working in **back lps** (see *Stitch Guide*), sc in each of next 13 sts, 3 sc in next st, sc in each of next 13 sts, turn. (29 sc)

Rows 3–7: Ch 1, working in back lp, sc in each sc to center sc of 3-sc group, 3 sc in center sc, sc in each rem sc across, turn. (39 sc)

Rnd 8: Now working in rnds in back lp, (**ch 5**—see *Pattern Notes*, dc) in first st, [ch 2, sk next sc, dc in next sc] 18 times, ch 2, sk next sc, (dc, ch 2, dc) in next sc, [ch 2, sk end of next 2 rows, dc in next row] 4 times, join with hdc in 3rd ch of beg ch-5 to form last ch-2 sp. (26 ch-2 sps)

Rnd 9: Ch 1, sc in sp formed by joining hdc, **shell** (see *Special Stitches*) in next ch-2 sp, [sc in

next ch-2 sp, shell in next ch-2 sp] 12 times, **join** (see *Pattern Notes*) in beg sc. Fasten off. (13 shells, 13 sc)

Rnd 10: Join frosty green in first sc of previous rnd, ch 1, sc in same sc as beg ch-1, 7 dc in ch-3 sp of next shell, [sc in next sc, 7 dc in ch-3 sp of next shell] around, join in first sc. Fasten off. (13 groups of 7-dc, 13 sc)

Rnd 11: Join olive in first sc of previous rnd, ch 1, sc in same sc as beg ch-1, *ch 4, (sc, ch 3, sc) in 4th dc of next 7-dc group, ch 4**, sc in next sc, rep from * around, ending last rep at **, join in first sc. Fasten off.

2ND–11TH OUTER PETALS

Rows 1–7: Rep rows 1–7 of First Outer Petal.

Rnds 8–10: Rep rnds 8–10 of First Outer Petal.

Rnd 11 (joining rnd): Join olive in first sc of previous rnd, ch 1, sc in same sc as beg ch-1, [ch 4, (sc, ch 3, sc) in 4th dc of next 7-dc group, ch 4, sc in next sc] 7 times [ch 4, sc in 4th dc of next 7-dc group, ch 1, sl st in corresponding ch-3 sp on previous Petal, ch 1, sc in same dc as last sc made, ch 4, sc in next sc] twice (*Petals joined tog in 2 ch-3 sps of previous Petal*), [ch 4, (sc, ch 3, sc) in 4th dc of next 7-dc group, ch 4, sc in next sc] 3 times, ch 4, (sc, ch 3, sc) in 4th dc of next 7-dc group, ch 4, join in first sc. Fasten off.

12TH OUTER PETAL

Rows 1–7: Rep rows 1–7 of First Outer Petal.

Rnds 8–10: Rep rnds 8–10 of First Outer Petal.

Rnd 11 (joining rnd): Join olive in first sc of previous rnd, ch 1, sc in same sc as beg ch-1, [ch 4, (sc, ch 3, sc) in 4th dc of next 7-dc group, ch 4, sc in next sc] twice, [ch 4, sc in 4th dc of

A simple floral doily turns into a spectacular creation with the addition of 12 large outer petals that are joined to the doily as the work progresses.



next 7-dc group, ch 1, sl st in corresponding ch-3 sp on previous Petal, ch 1, sc in same dc as last sc made, ch 4, sc in next sc] twice (*Petals joined tog in 2 ch-3 sps of first Petal*), [ch 4, (sc, ch 3, sc) in 4th dc of next 7-dc group, ch 4, sc in next sc] 3 times, [ch 4, sc in 4th dc of next 7-dc group,

ch 1, sl st in corresponding ch-3 sp on previous Petal, ch 1, sc in same dc as last sc made, ch 4, sc in next sc] twice (*Petals joined tog in 2 ch-3 sps of previous Petal*), [ch 4, (sc, ch 3, sc) in 4th dc of next 7-dc group, ch 4, sc in next sc] 3 times, ch 4, (sc, ch 3, sc) in 4th dc of next 7-dc group,

ch 4, join in first sc. Fasten off. Set ring of Outer Petals aside.

Note: *The inner edge of the ring has 3 ch-3 sps free on each Petal and the outer edge has 6 ch-3 sps free on each Petal. The center ch-3 sp on the inner edge will be joined to the Center.*

Continued on page 58

Lace Motif Pot Holder

Design by Susan Lowman

1 2 3 4 5 6 EASY

FINISHED MEASUREMENT

7 inches square

MATERIALS

- Lion Brand Kitchen Cotton medium (worsted) weight cotton yarn (2 oz/99 yds/57g per skein):
1 skein each #98 vanilla and #130 snap pea
- Size H/8/5mm crochet hook or size needed to obtain gauge
- Tapestry needle



GAUGE

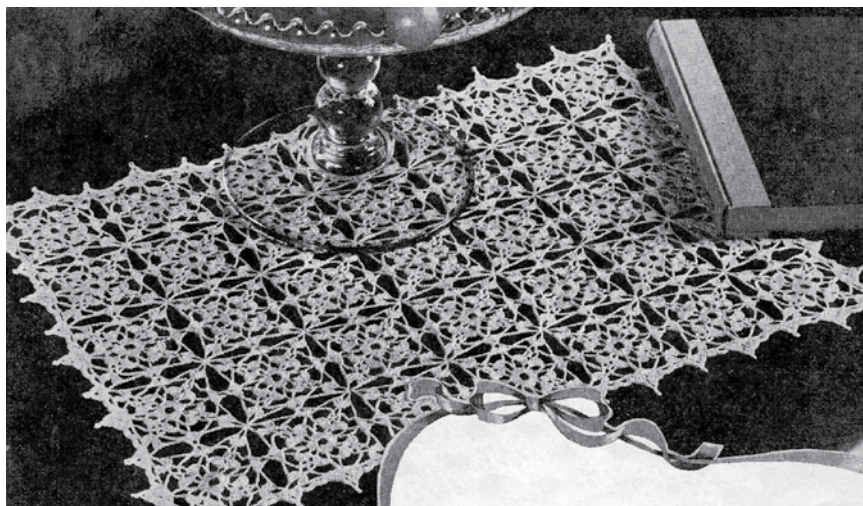
Rnds 1–6 of Back = 3 inches square

PATTERN NOTES

Weave in loose ends as work progresses.

Join with slip stitch as indicated unless otherwise stated.

Chain-3 at beginning of round counts as first double crochet unless otherwise stated.



Inspiration design for our Lace Motif Pot Holder

POT HOLDER

FRONT

Rnd 1 (RS): With vanilla, ch 7, **join** (see *Pattern Notes*) to form a ring, ch 1, [(sc, 3 dc, sc) in ring, ch 6] 4 times, join in first sc. (12 dc, 8 sc, 4 ch-6 sps)

Rnd 2: Sl st in next dc, (sl st, ch 1, sc) in next dc, *ch 2, (2 dc, ch 3, 2 dc) in next ch-6 sp, ch 2, sk next sc and dc**, sc in next dc, rep from * around, ending last rep at **, join in first sc. (16 dc, 4 sc, 12 ch-2 sps)

Rnd 3: Ch 1, *sc in next ch-2 sp, sk next dc, 3 dc in next dc, ch 4, 3 dc in next dc, sc in next ch-2 sp**, ch 4, rep from * around, ending last rep at **, join with ch 1, dc in first sc (to position hook in last ch-4 sp to beg next rnd). (24 dc, 8 sc, 8 ch-4 sps)

Rnd 4: Ch 1, sc around post of joining dc, *ch 6, (sc, ch 3, sc) in next ch-4 sp, ch 6**, sc in next ch-4 sp, rep from * around, ending last rep at **, join in first sc. (12 sc, 8 ch-6 sps, 4 ch-3 sps)

Rnd 5: Ch 3 (see *Pattern Notes*), (dc, ch 2, 2 dc) in same sc as beg ch-3, *ch 2, sc in next ch-6 sp, ch 2, (3 tr, ch 3, 3 tr) in center ch of next ch-3 sp, ch 2, sc in next ch-6 sp, ch 2**, (2 dc, ch 2, 2 dc) in next sc, rep from * around, ending last rep at **, join in 3rd ch of beg ch-3. Fasten off. (25 tr, 16 dc, 4 ch-3 sps, 16 ch-2 sps)

BACK

Rnd 1 (RS): With snap pea, ch 5, join to form a ring, 8 sc in ring, join in first sc. (8 sc)

Rnd 2: Ch 1, 2 sc in same st as joining, sc in next st, [3 sc in next st (for corner), sc in next st] 3 times, sc in same st as first 2 sc (last corner finished), join in first sc. (16 sc)

Rnd 3: Ch 1, 2 sc in same st as joining, *sc in next st and in each st across to center st in corner**, 3 sc in next st (center corner), rep from * around, ending last rep at **, sc in same st as first 2 sc, join in first sc. (24 sc)

Rnd 4: Ch 1, (hdc, sc) in same st as joining, *sc in next st and



A lovely lace motif that once created the elegant design in a vintage place mat gets a redo as a fancy front piece for a colorful pot holder. This project would make a great housewarming gift.

in each st across to center st in corner**, [(sc, hdc, sc) in next st, rep from * around, ending last rep at **, sc in same st as first 2 sts, join in first hdc. (32 sts)

Rnd 5: Rep rnd 3. (40 sts)

Rnd 6: Rep rnd 3. (48 sts)

Rnd 7: Rep rnd 4. (56 sts)

Rnds 8–13: [Rep rnds 5–7 consecutively] twice. (104 sts)

Rnd 14: Place WS of Front on RS of Back, working in sts of Back only or through both layers at same time as indicated, ch 1, 2 sc in same st as joining and through corner ch-3 sp of Front at same time, *sc in next 12 sc on Back only, sc in next st and through center ch-2 sp on Front at same time, sc in next 12 sc on Back only**, 3 sc in

next st and through corner ch-3 sp of Front at same time, rep from * around, ending last rep at **, sc in same st as first 2 sts and through corner ch-3 sp of Front at same time, (sl st, ch 10, sl st) in first sc (for hanging lp). Fasten off. (112 sts, 10 chs)

Wash and block Pot Holder. 

Seaside Wrap

Design by Annette Stewart

1 2 3 4 5 6 EASY

FINISHED SIZES

Instructions given fit 32–34-inch bust (*small*); changes for 36–38-inch bust (*medium*), 40–42-inch bust (*large*), 44–46-inch bust (*X-large*) and 48–50-inch bust (*2X-large*) are in [].

FINISHED MEASUREMENTS

Bust: 34 inches (*small*) [40 inches (*medium*), 48 inches (*large*), 56 inches (*X-large*), 62 inches (*2X-large*)]

MATERIALS

- Deborah Norville Serenity Garden fine (sport) weight microfiber acrylic (2½ oz/185 yds/65g per skein):
4 [5, 6, 7, 8] skeins
#0004 gems
- Sizes K/10½/6.5mm and M/N/13/9mm crochet hooks or size needed to obtain gauge
- Tapestry needle



Buy this
YARN NOW!
Annie'sCatalog.com

GAUGE

Before blocking: 5 dc rows x 7 dc sts = 4 inches

After blocking: 3 dc rows x 12 dc sts = 4 inches

PATTERN NOTES

Weave in loose ends as work progresses.

Gravity will elongate the stitches, but long blocking will add more length if desired, and damp blocking will set the stitches.

Chain-3 at beginning of row counts as first double crochet unless otherwise stated.

Chain-4 at beginning of row counts as first double crochet and chain-1 unless otherwise stated.

WRAP

Row 1: With size M/N hook, ch 54 [66, 78, 90, 102], hdc in 3rd ch from hook (2 sk chs count as first hdc), hdc in each rem ch across, turn. (53 [65, 77, 89, 101] hdc)

Row 2: Ch 3 (see *Pattern Notes*), dc in each hdc across, turn.

Row 3: Ch 3, dc in each dc across, turn.

Row 4: Ch 1, hdc in each dc across, turn.

Row 5: Ch 4 (see *Pattern Notes*), dc in same hdc as beg ch-4, ch 3, sk next 3 hdc, [(2 dc, ch 2, 2 dc) in next hdc, ch 3, sk next 3 hdc] across, ending with (dc, ch 1, dc) in last hdc, turn. (27 [33, 39, 45, 51] ch sps)

Row 6: Ch 3, 2 dc in ch-1 sp, [ch 3, 3 dc in ch-3 sp, ch 3, 3 dc in next ch-2 sp] across, ending with

2 dc in last ch-1 sp, dc in last dc, turn. (81 [99, 117, 135, 153] dc)

Row 7: Ch 3, dc in each dc across, turn.

Rows 8–14: Ch 3, dc in each dc across, turn. (81 [99, 117, 135, 153] dc)

Row 15: Ch 3, (dc, ch 2, 2 dc) in same dc as beg ch 3, ch 3, sk next 2 dc, [(2 dc, ch 2, 2 dc) in next dc, ch 3, sk next 2 dc] across, ending with (2 dc, ch 2, 2 dc) in last dc, turn. (108, [132, 156, 180, 204] dc)

Row 16: Ch 3, 2 dc in ch-2 sp, [ch 1, 3 dc in next ch-3 sp, ch 1, 3 dc in next ch-2 sp] across, ending with 2 dc in last ch-2 sp, dc in last dc, turn. (153 [192, 231, 270, 309] dc)

Row 17: Ch 3, dc in each of next 2 dc, [dc in ch-1 sp, dc in each of next 3 dc] across, turn. (204 [256, 308, 360, 412] dc)

Rows 18–25: Ch 3, dc in each dc across, turn.

Row 26: Ch 3, (dc, ch 2, 2 dc) in same st as beg ch-3, ch 3, sk next 3 dc, [(2 dc, ch 2, 2 dc) in next dc, ch 3, sk next 3 dc] across, ending with (2 dc, ch 2, 2 dc) in last dc, turn. (204 [256, 308, 360, 412] dc)

Row 27: Ch 1, hdc in each dc across, turn. (204 [256, 308, 360, 412] hdc)

Row 28: Ch 2, 3 dc in next hdc, [hdc in each of next 3 hdc, 3 dc in next hdc] across, ending with hdc in last hdc. Fasten off.

TIE

Row 1: With size K hook, ch 50, working across opposite side of foundation ch, sl st in each ch across, ch 51.

Row 2: Sc in 2nd ch from hook, sc in each rem ch, sc in each sl st across foundation ch, sc in each of next 50 chs. Fasten off.

Damp-block to gauge to set sts. **CW**





This breezy wrap is worked with sport-weight yarn on a large hook to create a very light and open design. It's a versatile piece that can be worn a variety of stylish ways.



Beach Pebble Pendants

Designs by Jennifer E. Ryan

1 2 3 4 5 6 EASY

FINISHED MEASUREMENTS

Small Pendant: 1½ inches wide x 1⅞ inches long

Large Pendant: 1¾ inches wide x 2 inches long

Cord: 20 inches long

MATERIALS

- Aunt Lydia's Bamboo size 10 crochet viscose thread (300 yds per ball):
1 ball #226 natural
- Aunt Lydia's Classic Crochet size 10 crochet cotton (350 yds per ball):
1 ball #856 peacock
- Size 7/1.65mm steel crochet hook or size needed to obtain gauge
- Tapestry needle
- Jewelry pliers
- Necklace clasp: 2
- 6mm jump rings: 4
- 8mm crimps: 4
- Large stone: 1¾ inches wide x 2 inches long
- Small stone: 1½ inches wide x 1⅞ inches long



GAUGE

With Bamboo, 3 sc rnds = ½ inch

PATTERN NOTES

Weave in loose ends as work progresses.

All motifs for Pendants are crocheted and then wrapped around beach stones measuring sizes given. Thread will stretch over pebbles larger in size than listed.

Join with slip stitch as indicated unless otherwise stated.

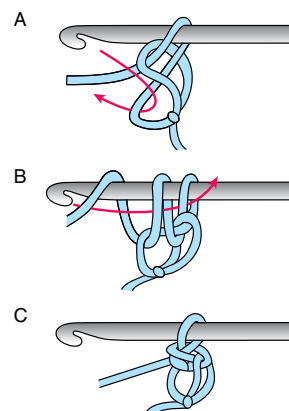
Chain-2 at beginning of round counts as first half double crochet unless otherwise stated.

Chain-4 at beginning of round counts as first double crochet and chain-1 unless otherwise stated.

SPECIAL STITCHES

Picot: Ch 3, sl st in first ch of ch-3.

Love Knot (LK): Draw up ⅝-inch long lp on hook, yo, draw through lp, sc in back strand of long lp.

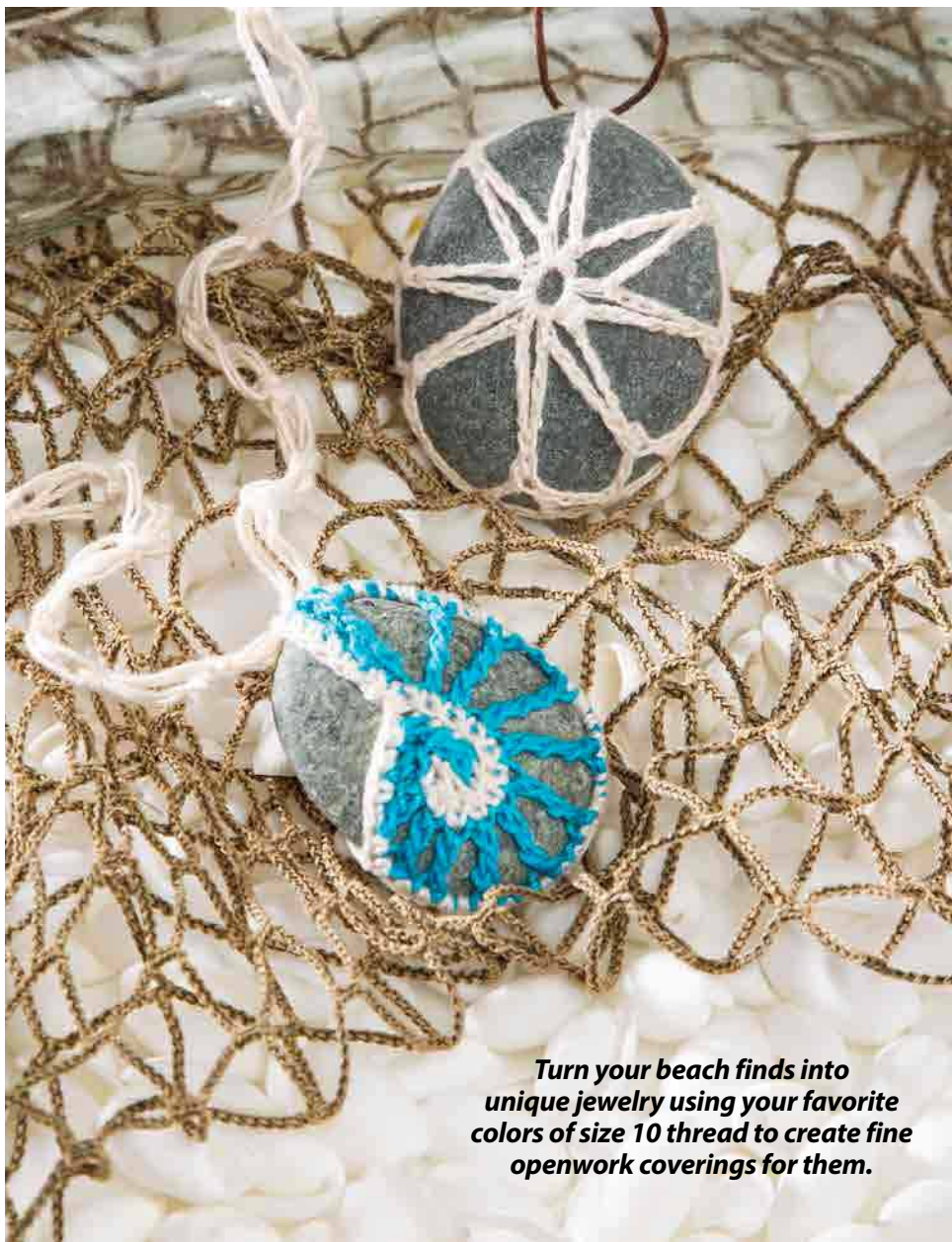


Love Knot

PENDANT NO. 1

FRONT SHELL

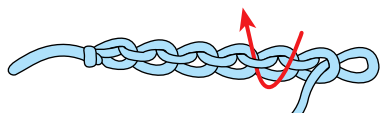
Row 1 (RS): With peacock, ch 25, working in the **back bar**



Turn your beach finds into unique jewelry using your favorite colors of size 10 thread to create fine openwork coverings for them.

of ch (see illustration), sl st in the 2nd and 3rd chs, sc in next ch, ch 1, sc in next ch, [ch 1, dc in next ch] twice, dc in next ch, [ch 2, tr in next ch] 3 times, [ch 3, dtr in next ch] 5 times, sk next 3 chs, sl st in last ch. Fasten off.

Row 2: With WS of row 1 facing, and working along opposite side of foundation ch, join natural with sc in 3rd ch from starting end, sc in each of next 10 chs. Fasten off.

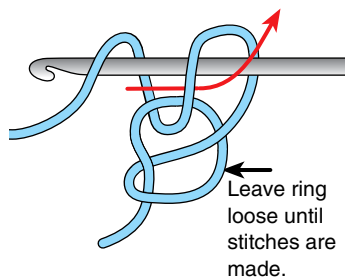
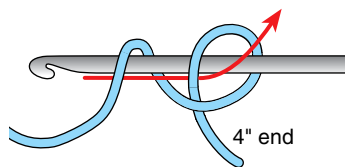


Back Bar of Chain

Row 3: With RS facing **join** (see Pattern Notes) natural in last sc just made, curl in unworked end and sc in 4th sc from end, now working along outer edge of shell, sc in next 2 sts, [sc in next ch-1 sp, sc in next dc] 3 times, [2 sc in next ch-2 sp, sc in next tr] 3 times, [3 sc in next ch-3 sp, sc in next dtr] 5 times, work sc in each ch along rem unworked edge, join in beg sc. Fasten off. Weave ends in on WS of Shell.

BACK MOTIF

Rnd 1: With natural, work **slip ring** (see illustration), 6 sc in ring, join in beg sc. (6 sc)



Slip Ring

Rnd 2: Ch 1, 2 sc in each sc around, join in beg sc. (12 sc)

Rnd 3: Ch 1, [2 sc in next sc, sc in next sc] around, join in beg sc. (18 sc)

Rnd 4: **Ch 2** (see Pattern Notes), hdc in each sc around, join in beg ch-2.

Rnd 5: **Ch 4** (see Pattern Notes), [dc in next hdc, ch 1] around, join in 3rd ch of beg ch-4, leaving 12-inch length, fasten off.

PENDANT NO. 2

EDGING

Rnd 1: With natural, ch 32 (this should be a length that fits snugly around large stone and is a multiple of 4), **join** (see Pattern Notes) to form a ring, **ch 2** (see Pattern Notes), hdc in each ch around, join in beg ch-2. (32 hdc)

Rnd 2: Ch 1, sc in same hdc as beg ch-1, [ch 2, sk next hdc, dc in next hdc, **picot** (see Special Stitches), ch 2, sk next hdc, sc in next hdc] around, join in beg sc. Fasten off.

CENTER MOTIF

Note: Adjustment of the number of chs may be required for each petal to fit snugly across the front of the large stone. Use care that both legs of each petal have the same amount of chs.

Rnd 1: With natural, ch 5, join to form a ring, ch 1, sc in ring, ch 5, sl st in any picot on rnd 2 of Edging, ch 5, [sc in ch-5 ring, ch 5, sl st in next picot of rnd 2 of Edging, ch 5] around, join in beg sc. Fasten off. Weave end in on WS.

CORD LENGTHS

Make 2.

Rnd 1: With 2 strands of natural, work **LK** (see Special Stitches) until 28 each 5/8-inch long are completed. Fasten off.



Continued on page 60

Limeade Beach Bag

Design by Margaret Dick

1 2 3 4 5 6 INTERMEDIATE

FINISHED MEASUREMENTS

14 inches wide x 17 inches long,
excluding Ties

MATERIALS

- Lily Sugar 'n Cream medium (worsted) weight cotton yarn (solids: 2½ oz/120 yds/71g per ball; ombres: 2 oz/95 yds/57g per ball):
3 balls #2713 key lime pie
2 balls #0001 white
- Sizes H/8/5mm and J/10/6mm crochet hooks or size needed to obtain gauge
- Tapestry needle



GAUGE

Size H hook: [Dc, ch 1] twice =
1 inch; 3 dc rnds = 2 inches

BAG

BOTTOM

Rnd 1 (RS): With size H hook and key lime pie, ch 38, dc in 4th ch from hook (*3 sk chs count as first dc*), dc in each of next 33 chs, (3 dc, ch 2) twice and 3 dc in last ch, working on opposite side of foundation ch, dc in each of next 33 chs, (3 dc, ch 2) twice and 1 dc in last ch, **join** (see *Pattern Notes*) in top of beg ch. (84 dc)

Rnd 2: Ch 3 (see *Pattern Notes*), dc in each dc across edge to corner ch-2 sp, (3 dc, ch 1, 3 dc) in corner ch-2 sp, dc in each of next 3 dc, (3 dc, ch 1, 3 dc) in corner ch-2 sp, dc in each dc across to next corner ch-2 sp, (3 dc, ch 1, 3 dc) in corner ch-2 sp, dc in each of next 3 dc, (3 dc, ch 1, 3 dc) in

corner ch-2 sp, dc in next dc, join in beg ch-3. (108 dc)

Rnd 3: Sl st in next dc, **ch 4** (see *Pattern Notes*), sk next dc, dc in next dc, *[ch 1, sk next dc, dc in next dc] across to corner ch-1 sp, (ch 1, dc) twice in corner ch-1 sp, [ch 1, sk next dc, dc in next dc] 4 times, (ch 1, dc) twice in corner ch-1 sp, rep from * around, ending with [ch 1, sk next dc, dc in next dc] twice, ch 1, join in 3rd ch of beg ch-4. Fasten off. (60 ch-1 sps)

NAME BAND

Rnds 1–5 (RS): With size H hook, join white at center back of Bag, ch 4, center name to fit sps on Bag front, using letter graph as a guide for alphabet, for solid blocks, work dc in dc, **pc** (see *Special Stitches*) in ch-1 sp (or in top of pc), dc in next dc and for open sps, dc in next dc, ch 1, dc in next dc, join in 3rd ch

PATTERN NOTES

Weave in loose ends as work progresses.

Join with slip stitch as indicated unless otherwise stated.

Chain-3 at beginning of round counts as first double crochet unless otherwise stated.

Chain-4 at beginning of round counts as first double crochet and chain-1 unless otherwise stated.

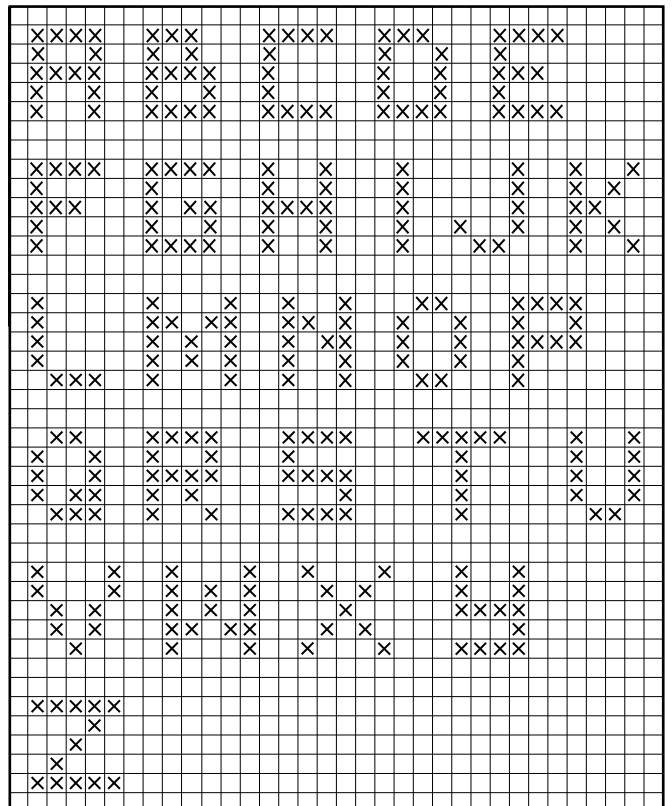
SPECIAL STITCHES

Popcorn (pc): 3 dc in indicated st or sp, draw up a lp, remove hook, insert hook in first dc of 3-dc group, pick up dropped lp and draw through st on hook.

Picot: Ch 3, sl st in top of last sc directly below.

STITCH KEY

- Space
X Popcorn (pc)



Limeade Beach Bag
Alphabet Chart

of beg ch-4. At the end of rnd 5, fasten off.

BAG BODY

Rnd 1: With size H hook, join key lime pie in any dc of rnd 5, ch 4, [sk next ch-1 sp or pc, dc in next dc, ch 1] around, join in 3rd ch of beg ch-4.

Rnds 2–16: Ch 4, sk next ch-1 sp, [dc in next dc, ch 1, sk next ch-1 sp] around, join in 3rd ch of beg ch-4.

Rnd 17: Ch 1, sc in same dc as beg ch-1, sc in next ch-1 sp, [sc in next dc, sc in next ch-1 sp] around, join in beg sc.

Rnd 18: Ch 4, sk next sc, [dc in next sc, ch 1, sk next sc] around, join in 3rd ch of beg ch-4. Fasten off.

TRIM

Rnd 1: With size H hook, join white in any dc, ch 1, sc in same dc, sc in next ch-1 sp, [sc in next dc, sc in next ch-1 sp] around, join in beg sc.

Rnd 2: Ch 1, sc in same sc as beg ch-1, sc in next sc, **picot** (see *Special Stitches*), [sc in each of next 2 sc, picot] around, join in beg sc. Fasten off.

TIE

Make 2.

Row 1: With size J hook and 1 strand each key lime pie and white held tog, leaving 6-inch length at beg, ch 100, leaving 6-inch length, fasten off.

With first Tie, starting at left edge of Bag, weave in and out of ch-1 sps of rnd 18, ending on same side as beg, knot beg and ending lengths tog at base of ch. With 2nd Tie, starting on right edge of Bag, weave through same ch-1 sps of rnd 18, ending on same side as beg, knot beg and ending lengths tog at base of chain.

Holding each end of Ties, pull to close Bag. **cw**

Easy-care cotton yarn and an open mesh pattern make this breezy tote ideal for the beach. If desired, initials or a short name can be worked in popcorn stitch on the front white bottom band.



Cottage Rug

Kathleen Stuart

1 2 3 4 5 6 INTERMEDIATE

FINISHED MEASUREMENTS

23 inches wide x 35 inches long

MATERIALS

- Lily Sugar 'n Cream medium (worsted) weight cotton yarn (solids: 2½ oz/120 yds/71g; ombres: 2 oz/95 yds/57g per ball):
12 balls #2223 mod ombre
3 balls #0001 white
- Sizes J/10/6mm and M/N/13/9mm crochet hooks or size needed to obtain gauge



GAUGE

Size M/N hook: 3 rows = 2 inches;
(sc, hdc, dc) twice = 2¼ inches

PATTERN NOTES

Weave in loose ends as work progresses.

Chain-1 at beginning of row on Rug only counts as first single crochet unless otherwise stated.

Join with slip stitch as indicated unless otherwise stated.

RUG

Row 1 (RS): With size M/N hook, holding 2 strands of mod ombre tog, ch 60, (hdc, dc) in 3rd ch from hook (2 sk chs count as first sc), *sk 2 chs, (sc, hdc, dc) in next ch, rep from * to last 3 chs, sk 2 chs, sc in last ch, turn.

Row 2: Ch 1 (see Pattern Notes), (hdc, dc) in first st, [sk next 2 sts (dc and hdc), (sc, hdc, dc) in next sc] across to last 3 sts, sk next 2 sts (dc and hdc), sc in top of ch-1, turn.

Rows 3–60: Rep row 2. At the end of row 60, fasten off.

LATTICE TOP

Row 1: With size J hook and 1 strand of white, join with sc in opposite side of foundation ch of row 1 of Rug, sc in each ch across, turn. (58 sc)

Row 2: Ch 1, sc in first st, [ch 7, sk next 2 sts, sc in next st] 18 times, ch 3, tr in last st (to position hook in center of last ch sp), turn.

Note: You will turn Lattice Top to be on top of Rug. The chs of each row will outline the (sc, hdc, dc) sts of the Rug in a diamond

shape. When working through both Lattice Top and Rug, on odd-numbered rows you will put your hook through the Rug st first and then the Lattice Top st, and on even-numbered rows you will put your hook through the Lattice Top st first and then the Rug st.

Row 3: Ch 1, sc in both last sc of Rug and tr of last row of Lattice Top, [ch 7, sc in both bars of next sc on Rug and next ch-7 lp] 18 times, ch 3, tr in last sc, turn.

Rows 4–62: Rep row 3.

Row 63: Ch 1, sc in both sc of last row of Rug and tr of last row of Lattice Top, [working over chs of Lattice Top and into next sts of Rug, sc in next 2 sts, sc in next sc of Rug and next sc of Lattice Top] 19 times, turn.

Rnd 64: Now working in rnds, ch 1, 3 sc in first sc (corner), sc in next st across until last sc, 3 sc in last st (corner), working along edge of Rug, [2 sc over post of tr of Lattice Top and in end of rows of Rug, sc in next sc (the beg of a row on the trellis)] across side of Rug working 3 sc in next corner sc, work sc in each st across bottom and work sc along next side as the first side, **join** (see Pattern Notes) in first sc of rnd. Fasten off. **cw**





This cool, reversible rug is worked with two strands of variegated worsted-weight yarn held together, and then a white lattice design is worked on one side to create two completely different looks.



Eyelet Lace Throw

Design by Dora Ohrenstein

1 2 3 4 5 6 INTERMEDIATE

FINISHED MEASUREMENTS

45 inches wide x 55 inches long
after blocking

MATERIALS

- Premier Cotton Fair fine (sport) weight cotton/acrylic yarn (3½ oz/317 yds/100g per ball):
5 balls #2707 bright peach
- Size F/5/3.75mm crochet hook or size needed to obtain gauge



Buy this
YARN NOW!
Annie'sCatalog.com

GAUGE

19 sts = 4 inches; 5 rows =
2¼ inches

PATTERN NOTES

Weave in loose ends as work progresses.

Chain-7 at beginning of row counts as first double crochet and chain-4 unless otherwise stated.

Chain-3 at beginning of row counts as first double crochet unless otherwise stated.

Join with slip stitch as indicated unless otherwise stated.

THROW

Foundation (RS): Ch 193, dc in 4th ch from hook (3 sk chs counts as first dc), dc in each of next 8 chs, *ch 4, sk next 4 chs, dc in next ch, ch 4, sk next 4 chs**, dc in each of next 10 chs, rep from * across, ending last rep at **, dc in last ch, turn.

Row 1: Ch 7 (see Pattern Notes), sk next ch-4 sp, sc in next dc, ch 4, sk next ch-4 sp, *dc in each of next 4 dc, ch 2, sk next 2 dc, dc in each of next 4 dc**, ch 4, sk next ch-4 sp, sc in next dc, ch 4, sk next ch-4 sp, rep from * across, ending last rep at **, dc in 3rd ch of turning ch, turn.

Row 2: Ch 3 (see Pattern Notes), sk first dc, dc in next dc, *ch 2, sk next 2 dc, 2 dc in next ch-2 sp, ch 2, sk next 2 dc, dc in next 2 dc, ch 4, sc in next ch-4 sp, ch 1, sk

next sc, sc in next ch-4 sp, ch 4**, dc in each of next 2 dc, rep from * across, ending last rep at **, dc in 3rd ch of turning ch, turn.

Row 3: Ch 7, sk next ch-4 sp and next sc, sc in next ch-1 sp, ch 4, sk next sc and ch-4 sp, *dc in each of next 2 dc, 2 dc in next ch-2 sp, ch 2, sk next 2 dc, 2 dc in next ch-2 sp, dc in each of next 2 dc**, ch 4, sk next ch-4 sp and next sc, sc in next ch-1 sp, ch 4, sk next sc and next ch-4 sp, rep from * across, ending last rep at **, with last dc in 3rd ch of turning ch, turn.

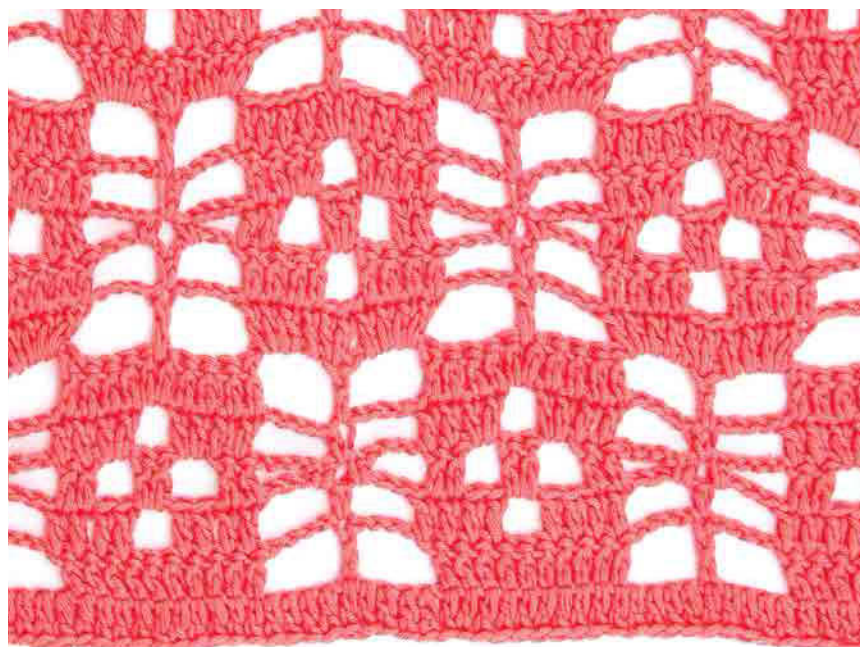
Row 4: Ch 3, sk first dc, dc in each of next 3 dc, *2 dc in next ch-2 sp, dc in each of next 4 dc, ch 4, sk next ch-4 sp, dc in next sc, ch 4, sk next ch-4 sp**, dc in each of next 4 dc, rep from * across, ending last rep at **, dc in 3rd ch of turning ch, turn.

Row 5: Ch 3, 3 dc in next ch-4 sp, 2 dc in next dc, 4 dc in next ch-4 sp, *ch 4, sk next 5 dc, dc in sp between last sk dc and next dc (between 5th and 6th dc sts), ch 4**, sk next 5 dc, 4 dc in next ch-4 sp, 2 dc in next dc, 4 dc in next ch-4 sp, rep from * across, ending last rep at **, sk next 4 dc, dc in 3rd ch of turning ch, turn.

Rows 6–105: [Rep rows 1–5 consecutively] 20 times. At the end of last rep, turn.

BORDER

Rnd 106: Now working in rnds, work 1 dc in each dc and ch across, working last dc in 3rd ch of turning ch, *ch 3, dc in same sp as last dc, pivot afghan to work down the side, work 2 dc in each row end of afghan, ch 3, dc in same sp as last dc**, pivot afghan to work across opposite side of foundation ch, work 1 dc in each ch across, rep from * to ** once, **join** (see Pattern Notes) in beg dc. Fasten off. **CW**



Solid blocks are accented with an openwork filet pattern that creates an eyelet effect in this deliciously light and airy throw crocheted in luscious sport-weight cotton yarn.



"I Love Crochet" Sampler

Design by Bonnie Barker

1 2 3 4 5 6 INTERMEDIATE

FINISHED MEASUREMENTS

3½ inches wide x 12½ inches long

MATERIALS

- Size 10 crochet cotton: 150 yds white
- Size 7/1.65mm steel crochet hook or size needed to obtain gauge



GAUGE

4 dc rows = 1 inch; 9 dc = 1 inch

PATTERN NOTES

Weave in loose ends as work progresses.

Join with slip stitch as indicated unless otherwise stated.

Chain-3 at beginning of row counts as first double crochet unless otherwise stated.

SAMPLER

Row 1: Ch 27, dc in 4th ch from hook (3 sk chs count as first dc), dc in next ch, [ch 1, sk next ch, dc in each of next 3 chs] 5 times,

ch 1, sk next ch, dc in last ch, turn. (6 blocks, 6 sps)

Row 2: Ch 3 (see Pattern Notes), dc in next ch-1 sp, dc in next dc, [ch 1, sk next dc, dc in next dc, dc in next ch-1 sp, dc in next dc] 5 times, ch 1, sk next dc, dc in next dc, turn. (6 blocks, 6 sps)

Row 3: Ch 3, dc in next ch-1 sp, dc in next dc, [ch 1, sk next dc OR ch-1 sp, dc in next dc] 9 times, dc in next ch-1 sp, dc in next dc, ch 1, sk next dc, dc in next dc, turn. (2 blocks, 10 sps)

Row 4: Ch 3, dc in ch-1 sp, dc in next dc, [ch 1, sk next ch-1 sp, dc in next dc] twice, dc in next ch-1 sp, dc in next dc, [ch 1, sk next ch-1 sp, dc in next dc] 4 times, dc in next ch-1 sp, dc in next dc, ch 1, sk next ch-1 sp, dc in next dc, dc in next ch-1 sp, dc in next dc, ch 1, sk next dc, dc in next dc, turn. (4 blocks, 8 sps)

Row 5: Ch 3, dc in ch-1 sp, dc in next dc, [ch 1, sk next ch-1 sp, dc in next dc] twice, dc in next 2 dc, [ch 1, sk next ch-1 sp, dc in next dc] 4 times, dc in next 2 dc, ch 1,

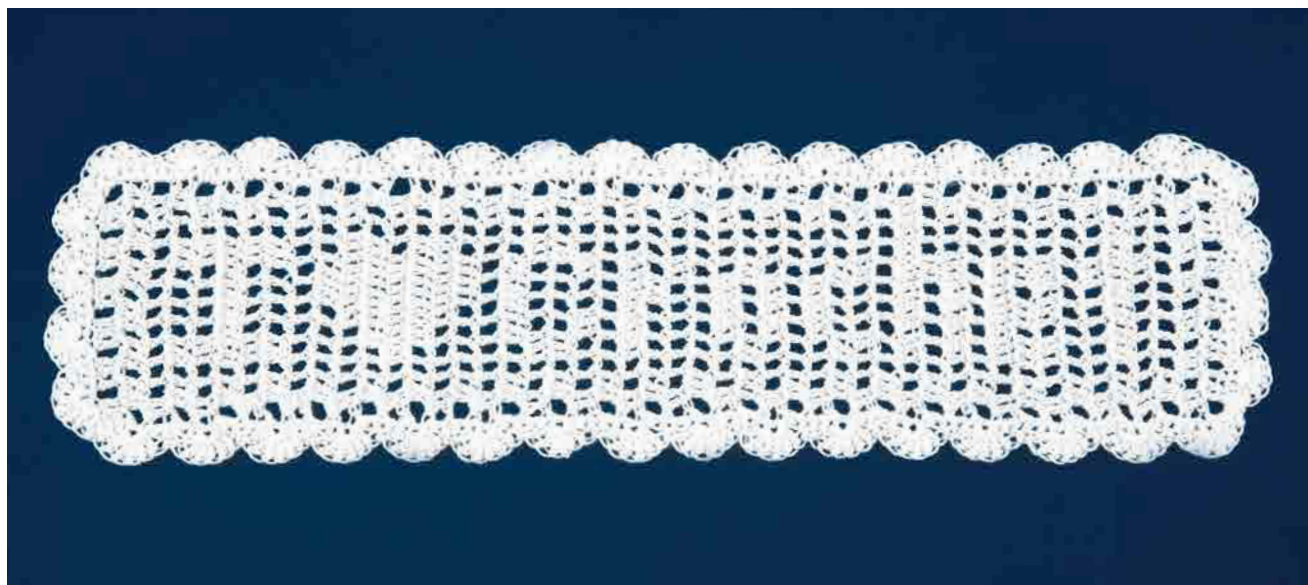
sk next ch-1 sp, dc in next dc, dc in next ch-1 sp, dc in next dc, ch 1, sk next dc, dc in next dc, turn. (4 blocks, 8 sps)


Row 6: Ch 3, dc in next ch sp, dc in next dc, ch 1, sk next dc, dc in next dc, ch 1, sk next ch-1 sp, dc in each of next 13 sts (6 blocks), ch 1, sk next ch-1 sp, dc in each of next 3 sts, ch 1, sk next st, dc in next dc, turn. (8 blocks, 4 sps)

Row 7: Ch 3, dc in next ch sp, dc in next dc, [ch 1, sk next st, dc in next st] twice, dc in each of next 2 dc, [ch 1, sk next st, dc in next st] 4 times, dc in each of next 2 sts, ch 1, sk next st, dc in next dc, dc in next ch-1 sp, dc in next dc, ch 1, sk next st, dc in next dc, turn. (4 blocks, 8 sps)

Row 8: Ch 3, dc in next ch-1 sp, dc in next dc, [ch 1, sk next st, dc in next dc] twice, dc in each of next 2 dc, [ch 1, sk next st, dc in next dc] 4 times, dc in each of next 2 dc, ch 1, sk next st, dc in next dc, dc in next ch-1 sp, dc in next dc, ch 1, sk next st, dc in next dc, turn. (4 blocks, 8 sps)

Row 9: Ch 3, dc in next ch-1 sp, dc in next dc, [ch 1, sk next st, dc in next dc] 9 times, dc in next ch-1 sp, dc in next dc, ch 1, sk





Make this eye-catching framed piece for your home to show off your stitching skills and your love of crochet, or give it as a unique and special gift to a crocheting friend.

next st, dc in next dc, turn.
(2 blocks, 10 sps)

Row 10: Ch 3, dc in next ch-1 sp, dc in next dc, [ch 1, sk next st, dc in next dc] 3 times, dc in each of next 4 sts, [ch 1, sk next st, dc in next dc] 4 times, dc in next st, dc in next dc, ch 1, sk next st, dc in next dc, turn.
(4 blocks, 8 sps)

Rows 11–48: Following Chart rows 11–48 (see page 62), work blocks and sps as indicated. At the end of row 48, **do not** fasten off.

BORDER

Rnd 1: Now working in rnds, ch 1, sc evenly along long edge of Sampler working 1 sc in each joining of rows and in each dc

OR ch 3, work 2 sc in each corner, 1 sc in each ch-1 sp and dc across opposite side of foundation ch and row 48, join in beg sc, do not turn.

Rnd 2: Working across long edge, work 6 dc in 3rd st to the left, [sk next 2 sts, sc in next st, sk next 2 sts, 6 dc in next st] around outer edge, join in beg st. Fasten off. **cw**

Filet Flowered Scarf

Design by Cindy Adams

1 2 3 4 5 6 EASY

FINISHED MEASUREMENTS

4 inches wide x 40 inches long

MATERIALS

- Omega La Perla fine (sport) weight cotton yarn (1¾ oz/278 yds/50g per ball):
1 ball #631 mauve
- Size C/2/2.75mm crochet hook or size needed to obtain gauge



GAUGE

4 sts = ½ inch; 4 rows = 1½ inches

PATTERN NOTES

Weave in loose ends as work progresses.

Chain-5 at beginning of row does not count as a stitch.

SCARF

Row 1 (RS): Ch 27, dc in 8th ch from hook (*sk chs count as 1 dc, ch 2, sk 2 chs*), [ch 2, sk 2 chs, dc in next ch] 6 times, turn. (7 ch-2 sps)

Row 2: Ch 5 (*see Pattern Notes*), dc in first dc, [ch 2, sk next 2 chs, dc in next dc] across, turn.

Row 3: Ch 5, dc in first dc, ch 2, dc in next dc, 2 dc in next ch-2 sp, dc in next dc, [ch 2, dc in next dc] twice, 2 dc in next ch-2 sp, dc in next dc, [ch 2, dc in next dc] twice, turn.

Row 4: Ch 5, dc in first dc, ch 2, dc in next dc, 2 dc in next ch-2 sp, dc in next dc, ch 2, sk next 2 dc, dc in next dc, 2 dc in next ch-2 sp, dc in next dc, ch 2, dc in next 4 dc, ch 2, dc in last dc, turn.



Inspired by a vintage edging pattern, this light and lacy scarf makes a lovely addition to a variety of stylish summer outfits.

Row 5: Ch 5, dc in first dc, [ch 2, dc in each of next 4 dc] 3 times, ch 2, dc in last dc, turn.

Row 6: Ch 5, dc in first dc, ch 2, dc in next dc, ch 2, sk next 2 dc, dc in next dc, [2 dc in next ch-2 sp, dc in next dc, ch 2, sk next 2 dc, dc in next dc] twice, ch 2, dc in last dc, turn.

Row 7: Ch 5, dc in first dc, [ch 2, dc in dc] twice, ch 2, sk next 2 dc, dc in next dc, 2 dc in next ch-2 sp, dc in next dc, dc in each of next 3 dc, [ch 2, dc in next dc] twice, turn.

Row 8: Ch 5, dc in first dc, [ch 2, dc in dc] twice, dc in each of next 3 dc, ch 2, sk next 2 dc, dc in next dc, 2 dc in ch-2 sp, dc in next dc, [ch 2, dc in next dc] twice, turn.

Row 9: Ch 5, dc in first dc, ch 2, dc in next dc, 2 dc in next ch-2 sp, dc in next dc, ch 2, sk next 2 dc, dc in next dc, 2 dc in next ch-2 sp, dc in next dc, ch 2, sk next 2 dc, dc in next dc, 2 dc in next ch-2 sp, dc in next dc, ch 2, dc in last dc, turn.

Row 10: Ch 5, dc in first dc, [ch 2, dc in each of next 4 dc] 3 times, ch 2, dc in last dc, turn.

Row 11: Ch 5, dc in first dc, ch 2, dc in each of next 4 dc, ch 2, dc in next dc, ch 2, sk next 2 dc, dc in next dc, 2 dc in next ch-2 sp, dc in next dc, ch 2, sk next 2 dc, dc in next dc, ch 2, dc in last dc, turn.

Row 12: Ch 5, dc in first dc, *[ch 2, dc in next dc] twice, ch 2, sk next 2 dc, dc in next dc, rep from * once ch 2, dc in last dc, turn. (7 ch-2 sps)

Row 13: Ch 5, dc in first dc, [ch 2, sk 2 chs, dc in next dc] across, turn.

Row 14: Ch 5, dc in first dc, [ch 2, sk 2 chs, dc in dc] across, turn. (7 ch-2 sps)

[Rep rows 3–14 consecutively] 6 times.

[Rep rows 3–13 consecutively] once. Fasten off. Press Scarf. **CW**

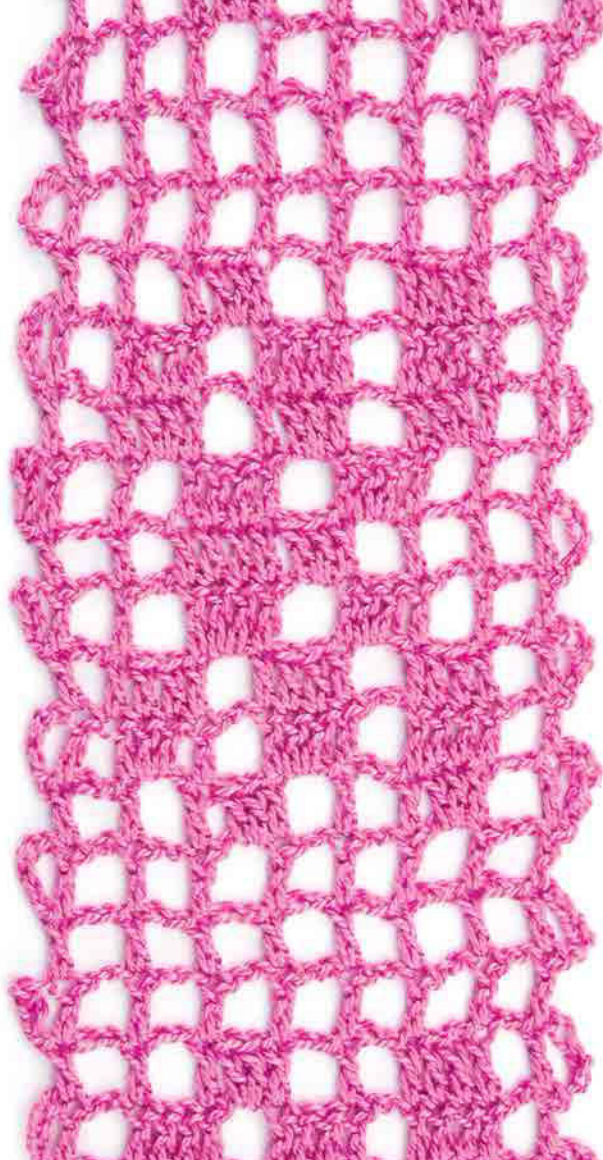


Figure Flattering Plus-Size Fashions

by Jenny King

Finding wearable crocheted styles in larger sizes can be a real challenge, but Australian designer Jenny King comes to the rescue with her latest book, *Figure Flattering Plus-Size Fashions*. These 11 designs in sizes ranging from XL to 5XL use classic yarns in a variety of weights and fiber contents. Cardigans, vests and tunics offer a number of wardrobe choices.

Figure Flattering Plus-Size Fashions is published by Annie's and is available at AnniesCatalog.com.

PRODUCT
REVIEW

Buy this
NOW!
AnniesCatalog.com



I am with a group of ladies that crochets 8-inch squares. We send them to a lady in South Africa where they are sewn together into blankets and given to orphanages. If you have any yarn that you would like to donate to us, please mail it to my address. *Debbie Shrock, 2690 Washington St., Mansfield, OH 44903*

Thank you to *Crochet World* and your loyal readers for putting our name in your magazine and for the yarn that our prayer shawl ministry received. Thank you also for the yarn received to make dishcloths for the Buddy Walk for Downs Syndrome. We are still in need of Caron, Home-spun and Peaches & Creme yarn for our ministry. We have given out 309 prayer shawls to date. *Joyce Gentrup, Prayer Shawl Ministry, 201 E. Park St., Hartington, NE 68739*

I am interested in any hat patterns, especially slouch hats, scarves and baby afghans. I am always looking for a charity to crochet for. This past Christmas I crocheted hats, scarves and neckties for our local adult day-care. I think this year I will give hats and scarves to our local cancer center and baby afghans to the nearest NICU. I have

been crocheting for 40 years, since I was in my early teens, and it never gets old. *Donna Neal, 1405 Roberts Court, Apt. 104, McKee, KY 40447*

I have a lot of free time while recovering from recent surgery and always love to crochet. I am looking for patterns for crocheted angels. If anyone has any that they are willing to share, I would greatly appreciate it. I have hundreds of patterns I can share in exchange. *JoAnn Bailey, 803 Sycamore Court, Grovetown, GA 30813*

Could someone please send me crochet patterns for baby hooded sweaters of any size, preferably with raglan sleeves? *Mary Lois Eberly, Box 43, Barwick, ON P0W 1A0 Canada*

I am a longtime subscriber to *Crochet World*. It is my favorite crochet magazine of all time because of the variety of patterns each issue contains. I am seeking someone to trade new/newer published patterns with. If interested, please write or email me. I look forward to making some new crafty friends to share ideas and patterns with. *L-A 1664 W. Jones Creek Road, Grants Pass, OR 97526*
cyt_e-zat@charter.net

If anyone has the pattern for the reversible baby blanket with rabbits that was in the April 1991 *Crochet World* magazine, as well as the duck and rabbit patterns that were on the front cover, and is willing to share them with me, please contact me. I am willing to pay for the postage. *Carol Knaak, 314 County Road 55, St. James, MN 56081*

I am looking for a crocheted pattern for a stuffed frog and also have some extra yarn and thread to give to anyone who would like it. *Marian Whitmon, 190 N. Meridian Ave., Spc 67, Rialto, CA 92376-0105*

Hello crochet friends! I crochet for charity and am in need of leftover yarn, material, crochet thread, hooks and needles. If you have any old projects you've never finished you can send them also. Thank you in advance for your help! *Jan Radford, 16999 Tiffany Drive, Houston, MO 65483*

I am a self-taught crocheter tangled in yarn for almost 5 years. I am new to *Crochet World* and loving it. Currently working on kids' hats for St. Jude's hospital, and a blanket for my dog. I am looking for any crochet wedding patterns. I enjoy pen pals and would love to hear from crafters like myself. *Catrima Thomas, 14322 Goldvein Road, Goldvein, VA 22720*

My grandmother used to make crocheted string bags for groceries. It had a double circle bottom, and you could scrunch up the whole bag and stuff it inside the circles, making a ball for easy carrying. Does anyone still have this pattern? *Sharen Butler, P.O. Box 940, Carstairs, AB T0M 0N0 Canada*

Looking for special crochet patterns or yarn? Let the readers of *Crochet World* help you locate them! Swap crochet patterns and tips, and find new friends. Send your requests to:

Crochet Connections, 306 East Parr Road, Berne, IN 46711

We are not able to publish all letters that we receive because of space limitations. Letters may be edited for clarity.

We will not knowingly publish requests for copyrighted patterns from other publications, television, cartoon or comic book trademark characters.

Note: It is legal to exchange or sell the following copyrighted material: magazines, books and pattern books and/or actual pages from those publications. However, it is illegal to exchange or sell photocopies, Internet files, digital scans or any other reproductions of copyrighted material.

Realize that your request may draw a large response, requiring considerable postage to reply to all who contact you. When responding to someone, be sure to include a self-addressed stamped envelope (SASE) and write legibly.

BACK TALK!

Raves from our readers and online followers.

From Our Readers

I started crocheting about a year and a half ago. Last December I purchased your magazine because I loved the Out on the Town Cape. I had only been crocheting for about 9 months but felt I would give it a try. My cape turned out beautifully! After two of my Bible study friends saw it, they too wanted capes. I finished one for my friend Kathy in May and another for my friend Collette in September. In the photo, I am in the green cape, Kathy is in the purple cape, and Collette is in the gray. For all three I used Bernat Alpaca yarn, which is a bit heavier so we can wear our capes for a good part of fall and winter here in Pittsburgh.

Thank you for such a wonderful magazine, where even beginners can "give it a try."

—Kim Giallonardo, via email



When I saw the Mirror Lake Throw in your December 2013 issue, I knew I just had to do this project. The colors are perfect for my den. It was fun and done in time for the holidays. Thank you once again for a great pattern!

—Nansie McHugh, via email



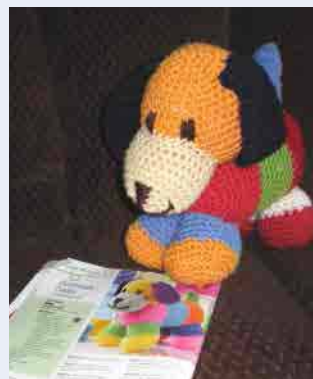
My 9-year-old granddaughter stayed with me last July, and just before she left, I asked her to go through my crochet magazines and pick a project she wished me to make. She found the Goin' to a Party sweater in your December 2012 issue. It worked up just beautifully, and she can wear it for a few years. It was a great pattern!

—Kai Otterson, Bend, Ore.



I have been receiving *Crochet World* since 2008 and love the variety of projects it offers—especially the new feature, Scrap Delights. I have lots of leftover yarn, and this is just the project I needed. I made the Patchwork Puppy from the April 2012 issue for a cousin baby girl. It was a big hit. Thanks for the great ideas and a great magazine.

—Heather Snook, Baden, ON, Canada



Vintage Roses Purse Set

Designs by Brenda Stratton

1 2 3 4 5 6 EASY

FINISHED MEASUREMENTS

Purse: 12 inches wide x 10 inches long x 3 inches deep, not including Handle

Eyeglasses Case: 3½ inches wide x 6¼ inches long

Accessory Bag: 5 inches wide x 5¼ inches long

MATERIALS

- Red Heart With Love medium (worsted) weight acrylic yarn (7 oz/370 yds/198g per skein):
 - 2 skeins #1012 black
 - 1 skein each #1704 bubble-gum and #1601 lettuce
- Size H/8/5mm crochet hook or size needed to obtain gauge
- Tapestry needle
- Sewing needle
- Matching sewing thread
- Straight pins
- Stitch marker
- Pair black double-rolled microfiber purse handles with rings by Everything Mary
- 16mm La Mode white pearl plastic shank button, style 4614
- 12mm La Mode white pearl plastic shank buttons, style 4613: 4
- 44mm La Petite black wooden barrel button with shank, style 761: 2



GAUGE

5 sc = 1 inch; 5 rows = 1 inch

PATTERN NOTES

Weave in loose ends as work progresses.

Join with slip stitch as indicated unless otherwise stated.

Do not join rounds unless otherwise stated. Use stitch marker to mark rounds.



The popularity of vintage style in today's fashions and accessories makes this classy purse set completely on trend with its modern upgrade on a charming, old-fashioned design.

PURSE SET

LEAF CLUSTER

Make 6.

First Leaf

Beg at base of Leaf, with lettuce, ch 5, 4 hdc in 2nd ch from hook, hdc in next ch, sc in next ch, (sc, ch 1, sc) in last ch (*point of Leaf*), working down opposite side of foundation ch, sc in next ch, hdc in next ch, 3 hdc in same sp as beg 4 hdc, **join** (see *Pattern Notes*) in beg hdc. Fasten off.

2nd Leaf

Rep First Leaf, **do not** fasten off, ch 7, sl st in center hdc of First Leaf. Fasten off.

Set Leaf Cluster aside.

LARGE FLOWER

Base

Rnd 1: With bubblegum, ch 4, join to form a ring, 6 sc in ring, place **stitch marker** (see *Pattern Notes*).

Rnd 2: Working in back lp (see *Stitch Guide*), 2 sc in each sc around. (12 sc)

Rnd 3: Working in back lp, [sc in next sc, 2 sc in next sc] around, join in back lp of beg sc of rnd 2. Fasten off. (18 sc)

Petals

Join bubblegum in first free lp on rnd 1 of Base, working in rem front lps in continuous rnds, *(ch 2, 2 dc, ch 2, sl st) in same lp, sk next lp, sl st in next lp, rep from * to end. Fasten off.

Assembly

With sewing needle and thread, sew 16mm white pearl shank button to center front of Flower. Tack 2 Leaf Clusters tog at center of ch-7 sp and tack to center back of Large Flower. Set Large Flower aside.

SMALL FLOWER

Make 4.

Base

Rnds 1 & 2: Rep rnds 1 and 2 of Large Flower. (12 sc)

Petals

Rep Petals of Large Flower.

Assembly

With sewing needle and thread, sew 12mm white pearl shank button to center front of Flower. Tack center of ch-7 of a Leaf Cluster to center back of each Small Flower. Set Small Flowers aside.

PURSE

Bottom

Rnd 1 (RS): With black, beg at bottom of Purse, ch 19, 3 sc in 2nd ch from hook, sc in each of next 16 chs, 3 sc in last ch, now working on opposite side of foundation ch, sc in each of next 16 chs, **do not join**, place marker. (38 sc)

Rnd 2: [2 sc in each of next 3 sc, sc in each of next 16 sc] twice. (44 sc)

Rnd 3: *[Sc in next sc, 2 sc in next sc] 3 times, sc in each of next 16 sc, rep from * once. (50 sc)

Rnds 4–8: Sc in each sc around, inc 3 sts evenly sp on each end staggering inc points each rnd to maintain rounded ends on Purse. (80 sc)

Sides

Rnd 9: Sc in each sc around.

Rnd 10: Sc in each sc around, inc 3 sts evenly sp on each end. (86 sc)

Rnds 11–14: [Rep rnds 9 and 10 alternately] twice. (98 sc)

Rnds 15–40: Rep rnd 9.

Rnd 41 (attaching handles): Sc in each of next 6 sc, holding

Purse handle with bottom of ring pointing up and center of Handle in downward position, [simultaneously sc in ring on left side of first Purse handle and in next sc of Purse] 6 times, sc in next 19 sc of Purse, [simultaneously sc in ring on right side of 2nd Purse handle and next sc] 6 times, sc in next 18 sc of Purse, [simultaneously sc in ring on left side of 2nd Purse handle and next sc] 6 times, sc in next 19 sc of Purse, [simultaneously sc in ring on right side of first Purse handle and next sc] 6 times, sc in each of next 12 sc of Purse. (98 sc)

Rnds 42–45: Rep rnd 9.

Rnd 46: Rep rnd 9, sl st in first sc. Fasten off.

Closure

With black, ch 16, sl st in 2nd ch from hook, sl st in each rem ch across, leaving 12-inch length, fasten off.

Using photo as a guide for placement, thread tapestry needle with rem 12-inch length and sew each end of Closure to rnd 46 at center back of Purse.

Sew black barrel button centered between rnds 44 and 45 at front top of Purse, directly opposite center of Closure.

EYEGASSES CASE

Rnd 1 (RS): Beg at bottom edge, with black, ch 12, 3 sc in 2nd ch from hook, sc in each of next 9 chs, 3 sc in last ch, working on opposite side of foundation ch, sc in each of next 9 chs, do not join, place marker. (24 sc)

Rnds 2–24: Sc in each sc around. At the end of rnd 24, join in next sc.

Rnd 25: Ch 1, sc in each sc around, join in beg sc. Fasten off.

Finishing

Using photo as a guide, sew a



Small Flower to open end of Eyeglasses Case.

ACCESSORY BAG

Rnd 1 (RS): Beg at bottom with black, ch 17, 3 sc in 2nd ch from hook, sc in each of next 14 chs, 3 sc in last ch, working on opposite side of foundation ch, sc in each of next 14 chs, do not join, place marker. (34 sc)

Rnds 2–18: Sc in each sc around. At the end of rnd 18, join in next sc.

Rnd 19: Ch 1, sc in each sc around, join in beg sc, sl st in each of next 3 sc, turn.

Flap

Row 20: Now working in rows, ch 1, sc in first sc, **sc dec** (see *Stitch Guide*) over next 2 sc, sc in each of next 11 sc, sc dec over next 2 sc, sc in next sc, turn. (15 sc)

Row 21: Sc in each sc across, turn.

Row 22: Ch 1, sc in first sc, sc dec over next 2 sc, sc in each of next 9 sc, sc dec over next 2 sc, sc in next sc, turn. (13 sc)

Row 23: Rep row 21.

Row 24: Ch 1, sc in first sc, sc dec over next 2 sc, sc in each of

next 7 sc, sc dec over next 2 sc, sc in next sc, turn. (11 sc)

Row 25: Rep row 21.

Row 26: Ch 1, sc in first sc, sc dec over next 2 sc, sc in each of next 5 sc, sc dec over next 2 sc, sc in next sc, turn. (9 sc)

Row 27: Rep row 21.

Row 28: Ch 1, sc in first sc, sc dec over next 2 sc, sc in each of next 3 sc, sc dec over next 2 sc, sc in next sc, turn. (7 sc)

Row 29: Rep row 21.

Row 30: Ch 1, sc in first sc, sc dec over next 2 sc, sc in next sc, sc dec over next 2 sc, sc in next sc, turn. (5 sc)

Row 31: Rep row 21.

Row 32: Ch 1, sc dec over next 2 sc, sc in next sc, sc dec over next 2 sc, turn. (3 sc)

Row 33: Rep row 21.

Row 34: Ch 1, sc dec over next 3 sc. Fasten off. (1 sc)

Edging

Row 35: With RS facing, join black with sl st in same st as first st of row 20 of Flap, sc in each st across edge of Flap, 3 sc in center sc of row 34 of point, sc in each st across next edge of Flap, ending with last sc in side edge of row 20, sl st in same st. Fasten off.


Closure

Join black with sl st in center sc on Row 35 of Edging at point, ch 10, sl st in 2nd ch from hook, sl st in each rem ch across, leaving 12-inch length, fasten off.

Thread tapestry needle with rem length and sew free end of Closure to same center sc of Edging.

Sew black barrel button to lower center front of Accessory Bag.

Finishing

Using photo as a guide, sew Small Flower centered to Flap. 



Father's Day Card

Design by Ruie Richardson

1 2 3 4 5 6 EASY

FINISHED MEASUREMENTS

Card: 4¼ inches x 5½ inches, folded

Boat and water: 2½ inches wide x 2½ inches tall

MATERIALS

- Size 10 crochet cotton:
 - 15 yds each white and royal blue
 - 5 yds each light blue and gold
 - 2 yds red
- Size 1/2.25mm steel crochet hook or size needed to obtain gauge
- Tapestry needle
- Card: 4¼ inches x 5½ inches side-fold
- Black and blue markers
- Tacky glue
- Paper edging shears



GAUGE

Gauge is not important for this project.

PATTERN NOTES

Weave in loose ends as work progresses.

Chain-2 at beginning of row does not count as first half double crochet unless otherwise stated.

CARD

WATER

Row 1: With light blue, ch 3, sl st in 3rd ch from hook, [ch 5, sl st in 3rd ch from hook] 6 times. Fasten off. (7 waves)



Guys appreciate receiving handcrafted cards too, and this handsome design makes a great card for the special men in your life, personalized for any occasion.

BOAT

Row 1: Beg at top edge of Boat with royal blue, ch 16, **hdc dec** (see *Stitch Guide*) in 3rd and 4th chs from hook, hdc in each of next 10 chs, hdc dec in last 2 chs, turn. (12 hdc)

Row 2: Ch 2 (see *Pattern Notes*), hdc dec in next 2 hdc, hdc in each of next 8 hdc, hdc dec in last 2 hdc, turn. (10 hdc)

Row 3: Sl st in each hdc across. Fasten off.

MAST

Row 1: With gold, ch 17, sl st in 2nd ch from hook, sl st in each rem ch across. Fasten off.

SAIL

Row 1: Beg at bottom of Sail,

ch 12, hdc dec in 2nd and 3rd chs from hook, hdc in each of next 7 chs, hdc dec in last 2 chs, turn. (9 hdc)

Row 2: Ch 2, hdc dec in next 2 hdc, hdc in each of next 5 hdc, hdc dec in last 2 hdc, turn. (7 hdc)

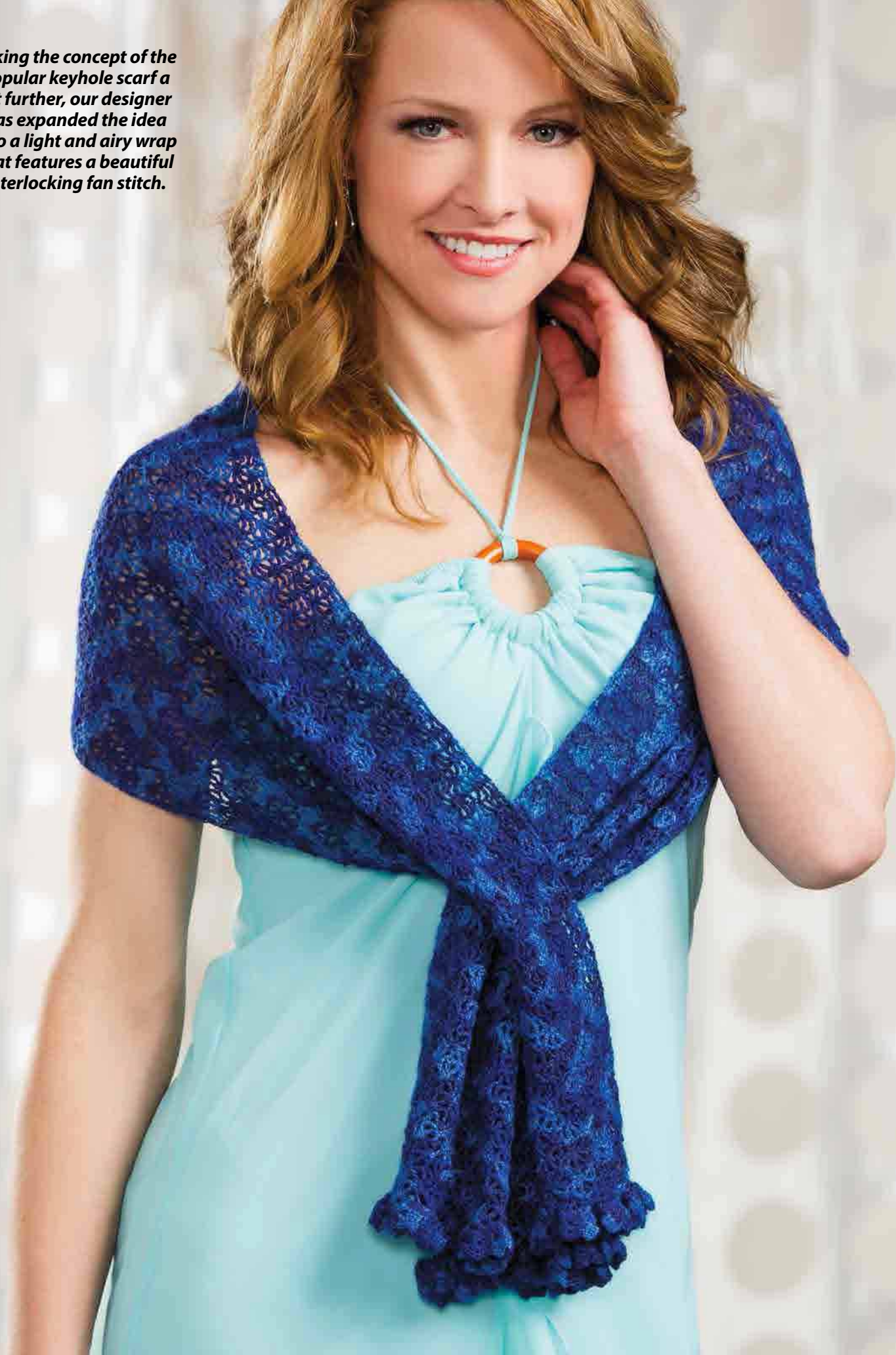
Row 3: Ch 1, hdc dec in next 2 hdc, hdc in each of next 3 hdc, hdc dec in next 2 hdc, turn. (5 hdc)

Row 4: Ch 1, hdc dec in next 2 hdc, hdc in next hdc, hdc dec in last 2 hdc, turn. (3 hdc)

Row 5: Ch 1, hdc dec in next 2 hdc, (hdc, ch 1, sl st) in next hdc. Fasten off.

Continued on page 55

Taking the concept of the popular keyhole scarf a bit further, our designer has expanded the idea into a light and airy wrap that features a beautiful interlocking fan stitch.



Deep Waters Keyhole Shawl

Design by Kristen Stoltzfus

1 2 3 4 5 6 INTERMEDIATE

FINISHED MEASUREMENTS

11 inches wide x 62 inches long

MATERIALS

- KnitPicks Shadow Tonal lace weight merino wool (1¾ oz/440 yds/50g per hank):
 - 2 hanks #24894 deep waters
- Size 2/2.20mm steel crochet hook or size needed to obtain gauge
- Tapestry needle



GAUGE

12 rows = 4 inches unblocked;
10 rows = 4 inches blocked

PATTERN NOTES

Weave in loose ends as work progresses.

Chain-6 at beginning of row counts as first treble crochet and chain-2 unless otherwise stated.

Chain-3 at beginning of row counts as first double crochet unless otherwise stated.

Join with slip stitch as indicated unless otherwise stated.

SPECIAL STITCHES

Fan: [(Tr, ch 2) twice, tr] in indicated st.

Half fan: (Tr, ch 2, tr) in indicated st.

SHAWL

Row 1: Ch 116, **fan** (see *Special Stitches*) in 8th ch from hook (*sk chs count as first dc, sk 3 chs, fan in next ch*), sk next 3 chs, dc in next ch, [sk next 3 chs, fan in next ch, sk next 3 chs, dc in next ch] across, turn. (14 fans, 15 dc)

Row 2: **Ch 6** (see *Pattern Notes*), tr in same st as beg ch-6 (*half*

fan made), dc in center tr of next fan, [fan in next dc, dc in center tr of next fan] across, ending with **half fan** (see *Special Stitches*) in last dc, turn. (13 fans, 2 half fans)

Row 3: **Ch 3** (see *Pattern Notes*), [fan in next dc, dc in center tr of next fan] across, turn.

Rep rows 2 and 3 alternately until Shawl measures 48 inches, ending with row 2, **do not** fasten off.

First Side of Keyhole Shaping

Row 1: Ch 3, [fan in next dc, dc in center tr of fan] 7 times, leaving rem sts unworked, turn. (7 fans, 8 dc)

Rows 2–11: [Rep rows 2 and 3 of Shawl alternately] 5 times. Fasten off.

2nd Side of Keyhole Shaping

Row 1: With RS facing, **join** (see *Pattern Notes*) yarn in first unworked dc, (ch 6, tr) in same dc (*half fan made*), dc in center tr of fan, [fan in next dc, dc in center tr of next fan] across, turn. (7 fans, 8 dc)

Rows 2–11: [Rep rows 2 and 3 of Shawl alternately] 5 times. At the end of last rep, **do not** fasten off.

Row 12: Ch 6, tr in same st as turning ch (*half fan made*), [dc in center tr of fan, fan in next dc] across 2nd Side of Keyhole Shaping, dc in last tr of half fan, fan in first dc of First Side Keyhole Shaping, dc in center tr of next fan, [fan in next dc, dc in center tr of next fan] across, work half fan in last dc, turn. (13 fans, 2 half fans)

Row 13: Rep row 3 of Shawl.

Rep rows 2 and 3 of Shawl alternately until Shawl measures 7 inches from end of Keyhole opening. Fasten off.

EDGING

Row 1: Join yarn on short end in first dc, (ch 3, 6 dc) in same st, [work 7 dc in center tr of fan, work 7 dc in next dc] across, turn. (29 dc groups)

Row 2: Ch 3, dc in each of next 2 dc, (dc, ch 2, dc) in next dc, dc in each of next 3 dc, [ch 1, dc in each of next 3 dc, (dc, ch 2, dc) in next dc, dc in each of next 3 dc] across, turn. (57 ch sps)

Row 3: (3 dc, tr, 3 dc) in each ch-1 sp across, ending with sl st in last dc. Fasten off.

Rep rows 1–3 in opposite short end of Shawl.

FINISHING

Wet-block Shawl to finished measurements. **CW**



Sunset Colors Throw

Design by Katherine Eng

1 2 3 4 5 6 INTERMEDIATE

FINISHED MEASUREMENTS

43½ inches wide x 57 inches long

MATERIALS

- Red Heart Super Saver medium (worsted) weight acrylic yarn (5 oz/ 244 yds/141 g per skein): 7 skeins #942 melonberry
- Size J/10/6mm crochet hook or size needed to obtain gauge
- Tapestry needle



GAUGE

Rows 1–5 = 3 inches; 9 sc = 3 inches

PATTERN NOTES

Weave in loose ends as work progresses.

Chain-6 at beginning of row counts as first double crochet and chain-3 unless otherwise stated.

Chain-4 at beginning of a row or round counts as first double crochet and chain-1 unless otherwise stated.

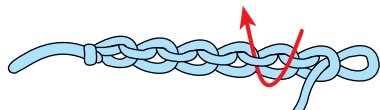
Join with slip stitch as indicated unless otherwise stated.

SPECIAL STITCH

Shell: 7 dc in indicated st.

THROW

Row 1 (WS): Working from top to bottom of Throw, ch 138, working in **back bar of ch** (see illustration) sc in 2nd ch from hook, sc in back bar of each rem ch across, turn. (137 sc)



Back Bar of Chain

Row 2 (RS): Ch 1, sc in first sc, [sk next 3 sc, **shell** (see *Special Stitch*) in next sc, sk next 3 sc, sc in next sc] across, turn. (17 shells, 18 sc)

Row 3: Ch 6 (see *Pattern Notes*), *sc in center dc of next shell, ch 3, dc in next sc**, ch 3, rep from * across, ending last rep at **, turn.

Row 4: Ch 4 (see *Pattern Notes*), *dc in next ch-3 sp, ch 1, dc in next sc, ch 1, dc in next ch-3 sp, ch 1**, dc in next dc, ch 1, rep from * across, ending last rep at **, dc in 3rd ch of beg ch-6, turn.

Row 5: Ch 1, sc in first dc, [ch 1, sk next ch-1 sp, sc in next dc] across, ending with ch 1, sk next ch, sc in 3rd ch of beg ch-4, turn.

Row 6: Ch 1, sc in first sc, [sk next ch-1 sp, next sc and next ch-1 sp, shell in next sc, sk next ch-1 sp, next sc and next ch-1 sp, sc in next sc] across, turn.

Rows 7–90: [Rep rows 3–6 consecutively] 21 times.

Row 91: Rep row 3.

Row 92: Ch 1, sc in first dc, [3 sc in ch-3 sp, sc in next sc, 3 sc in next ch-3 sp, sc in next dc] across, **do not turn**. (137 sc)

BORDER

Rnd 1 (RS): Working across edge, work 3 sc over post of each dc on edge and sc in end of each sc at end of row, ending with (sc, ch 2, sc) through 2 lps of corner ch, sc through 2 lps of each ch across foundation ch, ending with (sc, ch 2, sc) in last ch, working across opposite edge of Throw, work 3 sc over post of each dc on edge and sc in end of each sc at end of row, ending with (sc, ch 2, sc) in corner sc, sc in each sc across, ending with (sc, ch 2, sc) in last sc, **join** (see *Pattern Notes*) in beg sc. (183 sc each side between corner ch-2 sps; 137 sc top and bottom)

Rnd 2 (RS): Ch 1, sc in first sc, [ch 1, sk next sc, sc in next sc]

Continued on page 54





A light, airy pattern of pretty shells worked in beautiful twilight shades makes this easy, one-piece throw a perfect addition to your summer decor.

Spinilicious Doily

Design by Gemma Owen

1 2 3 4 5 6 INTERMEDIATE

FINISHED MEASUREMENT

8½ inches in diameter

MATERIALS

- Aunt Lydia's Classic Crochet size 10 crochet cotton (350 yds per ball):
 - 1 ball each
 - #480 delft,
 - #487 dark royal and
 - #805 blue Hawaii
- Size 7/1.65mm steel crochet hook or size needed to obtain gauge
- Tapestry needle



Buy this
YARN NOW!
AnniesCatalog.com

GAUGE

Rnds 1 and 2 = ⅞ inch in diameter;
2 dc rnds = ½ inch

PATTERN NOTES

Weave in loose ends as work progresses.

Join with slip stitch as indicated unless otherwise stated.

Chain-3 at beginning of round counts as first double crochet unless otherwise stated.

SPECIAL STITCHES

Beginning popcorn (beg pc):

Ch 3, 4 dc in indicated st, remove hook, insert hook in 3rd ch of beg ch-3, pick up dropped lp, draw through st on hook, ch 1 to lock.

Popcorn (pc): 5 dc in indicated st, remove hook, insert hook in first dc of 5-dc group, pick up dropped lp, draw through st on hook, ch 1 to lock.

DOILY

Rnd 1 (RS): Beg in center with dark royal, ch 3 (2 sk chs do not

count as first dc), 10 dc in 3rd ch from hook, **join** (see *Pattern Notes*) in first dc. (10 dc)

Rnd 2: Ch 3 (see *Pattern Notes*), **fpdc** (see *Stitch Guide*) around next dc, dc in sp before next dc, [fpdc around next dc, dc in sp before next dc] around, join in 3rd ch of beg ch-3. Fasten off. (10 dc, 10 fpdc)

Rnd 3: Join delft with sl st in same st as joining, ch 18, sc in next dc, [sl st in next dc, ch 18, sc in next dc] around, join in beg sl st. (10 ch-18 sps)

Rnd 4: Sl st in ch-18 sp, ch 3, 24 dc in ch-18 sp, [25 dc in next ch 18-sp] around, join in 3rd ch of beg ch-3. Fasten off. (250 dc)

Rnd 5: Join blue Hawaii in same st as joining, ch 3, dc in each of next 11 dc, 3 dc in next dc, [dc in each of the next 24 dc, 3 dc in next dc] around, ending with dc in each of last 12 dc, join in 3rd ch of beg ch-3. (270 dc)

Rnd 6: Join dark royal with sc in same st as joining, ch 2, [sc, ch 2 in next dc] 13 times, (sc, ch 2) twice in next dc, *[sc, ch 2 in next dc] 26 times, (sc, ch 2) twice in next dc, rep from * around, ending with (sc, ch 2) in each of the last 12 dc, join in beg sc. Fasten off.

Rnd 7: Join blue Hawaii with sc in any ch-2 sp at point of pinwheel, ch 15, [sc in next ch-2 sp at point of pinwheel, ch 15] 9 times, join in beg sc. (10 ch-15 sps)

Rnd 8: Sl st in ch-15 sp, ch 3, 9 dc, ch 3, 10 dc in same ch-15 sp, [(10 dc, ch 3, 10 dc) in next ch-15 sp] 9 times, join in beg ch-3. Fasten off. (200 dc, 10 ch-3 sps)

Rnd 9: Sk first 3 dc from joining,

join royal blue with [sc in next dc, ch 3, sk next 2 dc] twice, (sc, ch 8, sc) in next ch-3 sp, ch 3, sk next 2 dc, *(sc in next dc, ch 3, sk next 2 dc) twice, insert hook in next dc, draw up lp, sk next 2 dc, insert hook in next dc, draw up lp, yo, draw through all 3 lps on hook, ch 3, rep from * around, join in beg sc.

Rnd 10: Sl st in next ch-3 sp, ch 1, sc in same ch-3 sp, ch 3, *sc in next ch sp, 11 dc in ch-8 sp, [sc in next ch sp, ch 3] 5 times, rep from * around, ending with [sc in next ch sp, ch 3] 4 times, join in beg sc. (10 groups of 11 dc, 50 ch-3 sps)

Rnd 11: Sk next ch-3 sp after joining, join delft with sc in next ch-3 sp, dc in each of the next 5 dc, 3 dc in next dc, dc in each of next 5 dc, *[sc in next ch sp, ch 3] 4 times, sc in next ch sp, dc in each of next 5 dc, 3 dc in next dc, dc in each of next 5 dc, rep from * around, ending with [sc in next ch sp, ch 3] 3 times, sc in last ch sp, ch 1, hdc in beg sc to position hook in center of last ch sp. (40 ch-3 sps, 130 dc)

Rnd 12: Ch 1, sc in same sp as beg ch-1, *2 dc in each of next 6 dc, 3 dc in next dc, dc in each of next 6 dc, [sc in next ch sp, ch 3] 3 times, sc in next ch sp, rep from * around, ending with sk last sc, join in beg sc. Fasten off. (30 ch-3 sps, 270 dc)

Rnd 13: Join blue Hawaii with sc in 2nd to last ch-3 made (*this will be middle ch-3 of 3 ch-3 sps*), sk next ch-3, **fptr** (see *Stitch Guide*) around next dc, tr in sp before next dc] 11 times, fptr around next dc, [fptr around next dc, tr in sp before next dc] 10 times, fptr around next dc, sk next ch-3 sp, *sc in next ch-3 sp, sk next ch-sp, [fptr around next dc, tr in sp before next dc] 11 times, fptr around next dc, [fptr around next dc, tr in sp before



A layered pinwheel center spirals out to a border of deep textured scallops to give a unique look to the concept of spinning in circles.

next dc] 10 times, fp^{tr} in next dc, sk next ch-3 sp, rep from * around, join in beg sc. Fasten off.

Rnd 14: Join royal blue in any sc, working **beg pc** (see *Special Stitches*) in same st, **fp^{sc}** (see *Stitch Guide*) around 3rd tr, sc in next tr, **fphdc** (see *Stitch*

Guide) around next tr, hdc in next tr, [fpdc around next tr, dc in next tr] 18 times, fpdc around next tr, hdc in next tr, fphdc around next tr, sc in next tr, fp^{sc} around next tr, ***pc** (see *Special Stitches*) in next sc, fp^{sc} around 3rd tr, sc in next tr, fphdc around

next tr, hdc in next tr, [fpdc around next tr, dc in next tr] 18 times, fpdc around next tr, hdc in next tr, fphdc around next tr, sc in next tr, fp^{sc} around next tr, rep from * around, join in beg pc. Fasten off. **CW**

Lil' Miss Hootie

Design by Yvonne Odegard

1 2 3 4 5 6 **CONFIDENT
BEGINNER**

FINISHED MEASUREMENT

6 inches tall

MATERIALS

- Vanna's Choice medium (worsted) weight acrylic yarn (3½ oz/170 yds/100g per ball):
1 ball each #304 seaspray mist, #101 pink, #135 rust, #153 black and #100 white
- Sizes F/5/3.75mm and G/6/4mm crochet hooks or size needed to obtain gauge
- Tapestry needle
- Beading needle
- White sewing thread
- 4mm pearl beads: 2
- Liquid seam sealant/fabric glue
- Fiberfill
- Stitch marker
- Straight pins



GAUGE

Size G hook: 5 sc = 1 inch; 5 sc rnds = 1 inch

PATTERN NOTES

Weave in loose ends as work progresses.

Do not join rounds unless otherwise stated. Use stitch marker to mark rounds and move marker as work progresses.

Join with slip stitch as indicated unless otherwise stated.

If making for a child under age 3, embroider the white eye flecks rather than using beads.

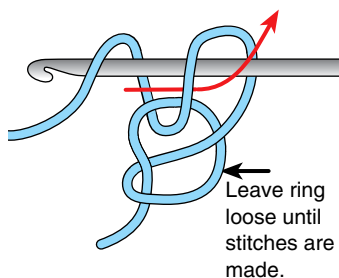
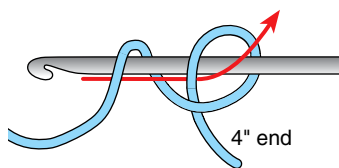
OWL

HEAD

Rnd 1: Beg at top of Head with size G hook and seaspray mist, work 6 sc in **slip ring** (see illustration), **do not join** (see Pattern Notes), place marker. (6 sc)



With her cuddly soft, chubby body and big, sweet, innocent eyes, this darling little owl is sure to capture the heart of any child.



Slip Ring

Rnd 2: 2 sc in each sc around. (12 sc)

Rnd 3: [2 sc in next sc, sc in next sc] around. (18 sc)

Rnd 4: [2 sc in next sc, sc in each of next 2 sc] around. (24 sc)

Rnd 5: [2 sc in next sc, sc in each of next 3 sc] around. (30 sc)

Rnd 6: [2 sc in next sc, sc in each of next 4 sc] around. (36 sc)

Rnd 7: Sc in each sc around.

Rnds 8–12: Rep rnd 7.

Rnd 13: [Sc dec (see *Stitch Guide*) over next 2 sc, sc in each of next 4 sc] around. (30 sc)

Rnd 14: [Sc dec over next 2 sc, sc in each of next 3 sc] around. (24 sc)

Continued on page 60

Discover a Kit-of-the-Month Club for CROCHETERS and KNITTERS!

Annie's®
Hook & Needle
Kit Club®

Get more than HALF-OFF introductory savings, plus get a FREE GIFT!

It's Your Choice!

- All the quality yarn and **TWO** easy sets of instructions (one in crochet and one in knitting) for every project are delivered right to your mailbox!
- Now, there are **TWO** fast, fun and easy ways to indulge your passion for stitching!
- Get a handy Crochet & Knitting Stitch Guide as a **FREE GIFT** with your first shipment!



Crochet It!
Knit It!



FREE
GIFT!



SYARU-A

To find out more, visit: KitClubSavings.com

Cluster Stripes Baby Blanket

Design by Delma Myers

1 2 3 4 5 6 EASY

FINISHED MEASUREMENTS

31 inches wide x 42 inches long

MATERIALS

- Lion Brand Babysoft light (light worsted) weight acrylic/polyamid yarn (5 oz/459 yds/141g per skein):
 - 3 skeins #169 sweet pea
 - 2 skeins #160 lemonade
 - 1 skein #100 white
- Sizes D/3/3.25mm and E/4/3.5mm crochet hooks
- Tapestry needle
- Stitch markers: 4



GAUGE

Gauge is not important for this project.

PATTERN NOTES

Weave in loose ends as work progresses.

Join with slip stitch as indicated unless otherwise stated.

BLANKET

Note: Use size E hook unless otherwise stated.

Row 1 (RS): With sweet pea, ch 6, dc in 4th ch from hook (3 sk chs count as a ch sp), dc in each of next 2 chs, do not join, turn. (3 dc, 1 ch sp)

Row 2: Ch 6, dc in 4th ch from hook, dc in each of next 2 chs, (sl st, ch 3, 3 dc) in next ch sp, turn. (6 dc, 2 ch sps)

Rows 3–5: Ch 6, dc in 4th ch from hook, dc in each of next 2 chs, (sl st, ch 3, 3 dc) in each ch sp across, turn. At end of last row, fasten off. (15 dc, 5 ch sps at end of last row)

Row 6: With WS facing, join (see Pattern Notes) white in first st, ch 6, dc in 4th ch from hook, dc in each of next 2 chs, (sl st, ch 3, 3 dc) in each ch sp across. Fasten off. (18 dc, 6 ch sps)

Row 7: With RS facing, join lemonade in first st, ch 6, dc in 4th ch from hook, dc in each of next 2 chs, (sl st, ch 3, 3 dc) in each ch sp across, turn. (21 dc, 7 ch sps)

Rows 8 & 9: Rep row 3. At end of last row, fasten off. (27 dc, 9 ch sps)

Row 10: Rep row 6. (30 dc, 10 ch sps)

Row 11: With RS facing, join sweet pea in first st, ch 6, dc in 4th ch from hook, dc in each of next 2 chs, (sl st, ch 3, 3 dc) in each ch sp across, turn. (33 dc, 11 ch sps)

Rows 12–41: [Rep rows 2–11] 3 times. (123 dc, 41 ch sps at end of last row)

Rows 42–47: Rep rows 2–7.

Row 48: Ch 6, dc in 4th ch from hook, dc in each of next 2 chs, (sl st, ch 3, 3 dc) in each ch sp across, turn.

Row 49: Ch 1, sl st in each of first 3 sts, (sl st, ch 3, 3 dc) in each ch-sp across. Fasten off.

Row 50: With WS facing, join white in first st, ch 6, dc in 4th ch from hook, dc in each of next 2 chs, (sl st, ch 3, 3 dc) in each ch sp across to last ch sp, sl st in last ch sp. Fasten off.

Row 51: With RS facing, join sweet pea in first ch sp, ch 3, 3 dc in same sp, (sl st, ch 3, 3 dc) in each ch sp across, turn.

Row 52: Ch 6, dc in 4th ch from hook, dc in each of next 2 chs, (sl st, ch 3, 3 dc) in each ch sp across to last ch sp, sl st in last ch sp, turn.

Row 53: Ch 1, sl st in each of first 3 sts, (sl st, ch 3, 3 dc) in each ch sp across, turn.

Row 54: Rep row 52.

Row 55: Ch 1, sl st in each of first 3 sts, (sl st, ch 3, 3 dc) in each ch sp across. Fasten off.

Row 56: With WS facing, join white in first st, ch 6, dc in 4th ch from hook, dc in each of next 2 chs, (sl st, ch 3, 3 dc) in each ch sp across to last ch sp, sl st in last ch sp. Fasten off.

Row 57: With RS facing, join lemonade in first ch sp, ch 3, 3 dc in same sp, (sl st, ch 3, 3 dc) in each ch sp across, turn.

Rows 58 & 59: Rep rows 52 and 53. At end of last row, fasten off.

Rows 60–67: Rep rows 50–57.

Rows 68 & 69: Ch 1, sl st in each of first 3 sts, (sl st, ch 3, 3 dc) in each ch sp across to last ch sp, sl st in last ch sp, turn. At end of last row, fasten off. (138 dc, 46 ch sps at end of last row)

Row 70: With WS facing, join white in first ch sp, ch 3, 3 dc in same sp, (sl st, ch 3, 3 dc) in each ch sp across to last ch sp, sl st in last ch sp. Fasten off. (135 dc, 45 ch sps)

Row 71: With RS facing, join sweet pea in first ch sp, ch 3, 3 dc in same sp, (sl st, ch 3, 3 dc) in each ch sp across to last ch sp, sl st in last ch sp, turn. (132 dc, 44 ch sps)

Rows 72–75: Rep row 68. At end of last row, fasten off. (120 dc, 40 ch sps)

Row 76: Rep row 70. (117 dc, 39 ch sps)

This fun-to-stitch blanket works up quickly beginning at the bottom corner, increasing to the widest point, then decreasing to the top corner.



Row 77: With RS facing, join lemonade in first ch sp, ch 3, 3 dc in same sp, (sl st, ch 3, 3 dc) in each ch sp across to last ch sp, sl st in last ch sp, turn. (114 dc, 38 ch sps)

Rows 78 & 79: Rep rows 68 and 69. At end of last row, fasten off. (108 dc, 36 ch sps at end of last row)

Rows 80–109: [Rep rows 70–79] 3 times. (18 dc, 6 ch sps at end of last row)

Rows 110–115: Rep rows 70–75. (3 dc, 1 ch sp at end of last row)

EDGING

Rnd 1 (RS): With RS facing, join sweet pea with sc in st at any corner, 2 sc in same st (*mark center st*), [2 sc in each ch sp, sc in each dc] across to next corner, *3 sc in next corner (*mark center st*), [2 sc in each ch sp, sc in each dc] across to next corner, rep from * around, join in beg sc.

Note: On following rnds, move markers up to center st of each corner.

Rnds 2 & 3: Ch 1, *sc in each st across to next marked st, 3 sc in marked st, rep from * 3 times, sc in each st across to beg sc, join in beg sc. At end of last rnd, fasten off.

Rnd 4: With WS facing, join lemonade with sc in any marked st, 2 sc in same st, *sc in each st across to next marked st, 3 sc in marked st, rep from * twice, sc in each st across to beg sc, join in beg sc.

Rnd 5: Rep rnd 2. Fasten off.

Rnds 6 & 7: With RS facing and with white, rep rnds 4 and 5.

Rnd 8: With RS facing, with sweet pea, rep rnd 4.

Rnd 9: With size D hook and working left to right, work **reverse sc** (see *Stitch Guide*) in each st around, join in beg reverse sc. Fasten off. **CW**

Sunset Colors Throw

Continued from page 46

around, working at each corner, ch 1, sk next sc, (sc, ch 2, sc) in corner ch-2 sp, ending with ch 1, sk last sc, join in beg sc, sl st in next ch-1 sp.

Rnd 3 (RS): Ch 4, sk next sc, dc in next ch-1 sp, [ch 1, sk next sc, dc in next ch-1 sp] around, working in each corner, ch 1, sk next sc, [(dc, ch 1, dc) 3 times, dc] in corner ch-2 sp, ending with ch 1, sk next sc, join to 3rd ch of beg ch-4, turn.

Rnd 4 (WS): Ch 1, sc in next ch-1 sp, [ch 1, sk next dc, sc in next ch-1 sp] around, working in each corner in center ch-1 sp, ch 1, sk next dc, (sc, ch 2, sc) in center corner ch-1 sp, ending with ch 1, sk last dc, join in beg sc, turn, sl st in next ch-1 sp and in next sc.

Rnd 5 (RS): Ch 1, sc in same sc as beg ch-1, [sk next 3 sts (*ch-1 sp, sc and next ch-1 sp*), shell in next sc, sk next 3 sts (*ch-1 sp, sc and next ch-1 sp*), sc in next sc] around, working at corners 1 and 3, shell in corner ch-2 sp, sc in next sc, at corners 2 and 4, sk next ch-1 sp and next sc, shell in corner ch-2 sp, sc in next sc, ending with sk last 3 sts, join in beg sc.

Rnd 6 (RS): Ch 1, sc in same sc, *ch 1, sk next dc, sc in next dc, ch 1, sk next dc, (sc, ch 2, sc) in next dc, ch 1, sk next dc, sc in next dc, ch 1, sk next dc**, sc in next sc*, rep from * to * around, working at each corner ch 1, sk next dc, sc in next dc, ch 1, sk 1 dc, (sc, ch 2, sc, ch 3, sc, ch 2, sc) in next dc, ch 1, sk next dc, sc in next dc, ch 1, sk next dc, sc in next sc, ending last rep at **, join in beg sc. Fasten off.

With WS facing, block lightly. **CW**



Spring Bouquet Shawl

Continued from page 7

in next dc, ch 4, sl st in next dc, rep from * 3 times. Fasten off.

Motifs 2-7

Rnd 1: Ch 10, join in first ch to form a ring, ch 3, 17 dc in ring, join in beg ch-3. (18 dc)

Rnd 2: Counting counterclockwise from 2nd picot join made of previous motif, ch 4, 3 tr in same sp, ch 2, sl st in picot sp of Motif 1, ch 2, sl st in first ch of ch-2 of Motif 2 (*joining picot completed*), 3 tr in next dc of Motif 2, ch 4, sl st in next dc, [ch 4, 3 tr, ch 2,

sl st in picot of row below, ch 2, sl st in first ch of ch-2 (*joining picot completed*), 3 tr in next dc, ch 4, sl st in next dc] twice, *(sl st, ch 4, 3 tr, picot) in next dc, 3 tr in next dc, ch 4, sl st in next dc, rep from * twice. Fasten off.

MOTIFS OF ROWS 3-26

[Rep Motifs of Row 2] 24 times.

FILL-IN TRELLIS MOTIF

Make 156.

Row 1: Ch 9, dc in 5th ch from hook (*sk chs count as first dc, ch 1*), [ch 1, sk next ch, dc in next ch] twice, turn. (3 ch-1 sps)

Rows 2 & 3: Ch 4 (*see 2nd ch-4 reference in Pattern Notes*), [dc in next dc, ch 1] twice, dc in 3rd ch of ch-4. At the end of row 3, **do not** fasten off.

Rnd 4: Now working in rnds, ch 1, 2 sc in last sp made (*this is a corner sp*), sc in next st, sc in next sp, *2 sc in next corner, ch 2, sl st in picot sp, ch 2, 2 sc in same corner sp, sc in next st, sc in next sp, sc in next st, rep from * around rem sides until last corner sp, 2 sc, ch 2, sl st in picot, ch 2, sl st in beg sc.

Fasten off.

Block Shawl before attaching beads.

With sewing needle and thread, sew a bead to center of rnd 1 of each Motif. **CW**



WINNER'S CIRCLE CONTEST

We know many talented readers enjoy designing their own patterns, from tablecloths to toys. Why not let others enjoy your pattern and earn a little cash in the process? We'll pay top dollar for your original crochet patterns. From those submitted, we'll choose a Winner's Circle prize-winning design.

Please send us the actual crocheted item(s), which will be photographed and returned to you. (Make sure you include return postage for the return of the item.)

Please email (Editor@Crochet-World.com) or write for our Designer's Guidelines, which provide necessary information when submitting designs.

All patterns submitted must be your own design and not a copy of another designer's pattern or copyrighted figures (Disney or Sesame Street characters, etc.).

Designs should be sent to:

**Winner's Circle
Crochet World
306 East Parr Road
Berne, IN 46711**

Father's Day Card

Continued from page 43

FLAG

Row 1: With red, ch 4, hdc in 3rd ch from hook, dc in next ch. Fasten off.

ASSEMBLY

With paper edging shears, trim a scalloped edge along right

edge of card front. With blue marker, color ¼ inch inside right edge of card.

Glue flat edge of Mast centered on card front. Glue Boat centered over base of Mast. Leaving ¼ inch above Boat free, glue Sail centered over Mast. With foundation ch next to Mast, glue Flag to top of Mast. Glue Water centered to base of Boat. **CW**

Citrus Drops Table Set

Continued from page 11

st of front layer and in back lp of next st of 2nd layer, yo, draw through lp on hook to complete sl st] rep 17 times, ending with sl st in back lp of sc dec of spoke row 1. Fasten off. (19 sl st)

[Rep rows 1 and 2 of First White Spoke] 7 times to create spokes between slices.

OUTER RIND

Rnd 1: Join white in back lp of center dc on any Slice, ch 4, tr in same sp, tr in each of next 3 sts, 2 tr in same sp as beg ch-4 of white Spoke row 1, work 6 tr evenly sp across top of white Spoke, [2 tr in same sp as last tr of white Spoke, tr in each of next 3 sts, 2 tr in next (*center*) st of slice, tr in each of next 3 sts, 2 tr in same sp as beg ch-4 of white Spoke, work 6 tr evenly sp across white Spoke] 7 times, ending with 2 tr in same sp as last tr of white Spoke, tr in each of next 3 sts, join to top of beg ch-4. Fasten off. (144 tr)

Rnd 2: Join light bright orange in back lp of any tr of previous rnd near center of any Slice, ch 1, working in back lp, sc in each st around, inc 1 sc at center of each Slice and at center of each white Spoke, join in beg sc. Fasten off. (160 sc)

Note: On rnds 3 and 4, do not work inc in same area over inc of previous rnd.

Rnd 3: Join white in back lp of any sc of previous rnd and working in back lp, ch 4, tr in each st around, inc 1 tr above each white Spoke, join in 4th ch of beg ch-4. Fasten off. (168 tr)

Rnd 4: Join light bright orange in back lp of any tr of previous rnd, **ch 3** (see *Pattern Notes*) and working in back lp, dc in same st as joining, dc in each st around, inc 1 dc over each Slice, join in 3rd ch of beg ch-3. Fasten off. (176 dc)

FINISHING

Pin Place Mat to measure 12½ inches in diameter on ironing surface, steam-block with iron.

After Place Mat is dried, remove pins.

COASTER

Make 1 each with light bright orange, bright lime green, bright yellow & hot pink.

CENTER

Rnd 1: With size C hook and white, ch 2, 8 sc in 2nd ch from hook, join in beg sc. Fasten off. (8 sc)

FIRST SLICE

Row 1: Join light bright orange in back lp of any sc of rnd 1, ch 2, sc in 2nd ch from hook, **next foundation sc** (see *Special Stitches*) in same ch as first sc, work 2 next foundation sc, 3 sc in ch of last foundation sc, turn, working in opposite side of foundation ch of row, sl st in each of next 3 chs, join in same sp as joining. Fasten off. (7 sc, 3 sl st)

2ND SLICE

Row 1: Join light bright orange in back lp of next sc of rnd 1, rep row 1 of First Slice.

3RD-8TH SLICES

[Rep row 1 of First Slice] 6 times.

FIRST WHITE SPOKE

Row 1: Sk first 6 sc on right edge of any Slice, join white in back lp of next sc, ch 1, sc in same sp, loosely sl st in each of next 3 sc, insert hook in same sp as ending join of Slice and insert hook in same sp as beg join of next Slice, yo, draw through lp on hook to create sl st dec, loosely sl st in each of next 3 sts along right edge of Slice, sc in next st, turn. (9 sts)

Row 2 (Spoke joining): Fold top edges of last row RS tog with first sc behind last sc made and working through both thicknesses, insert hook in closest lp (*top lp*) of first sc of front layer and in back lp of first sc of back layer, yo, draw through lp on





hook to create a sl st, work 1 sl st in same manner in each of next 3 sl sts, sl st in back lp of sl st dec made between slices. Fasten off. (5 sl st)

2ND WHITE SPOKE

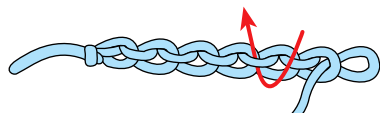
Row 1: Working in unworked sts on left edge of same Slice, sk next 2 sc, join white to back lp of next sc, ch 1, sc in same sp, loosely sl st in each of next 3 sc, insert hook in same sp as ending join of Slice and insert hook in same sp as beg join of next Slice, yo, draw through lp on hook to create sl st dec, loosely sl st in each of next 3 sts along right edge of Slice, sc in next st, turn.

Row 2 (Spoke joining): Rep row 2 of First Spoke.

[Rep rows 1 and 2 of 2nd spoke] 7 times to create spokes between slices.

OUTER RIND

Rnd 1: With size C hook, join white to center on end of any Spoke, ch 3, work 2 dc in same Spoke, [2 dc in **back bar** (see illustration) of next sc of Slice] 2 times, [3 dc in center of next Spoke, 2 dc in each back bar of next 2 sc of Slice] 7 times, join to 3rd ch of beg ch-3. Fasten off. (56 dc)



Back Bar of Chain

Rnd 2: Join light bright orange in back lp of any dc, ch 1, sl st in each dc around, inc 1 sl st over each Slice. Fasten off. (64 sl sts)

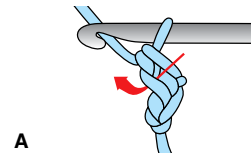
Rnd 3: Join white to back lp of any sl st, **ch 2** (see *Pattern Notes*), hdc in each sl st around, inc 1 hdc over each spoke. Fasten off. (72 hdc)

Rnd 4: Join light bright orange in back lp of any hdc, ch 1, sc in each st around, inc 1 sc over each Slice. Fasten off. (80 sc)

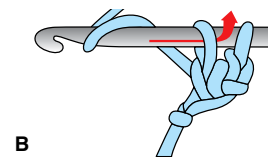
FINISHING

Pin Coaster to measure 4½ inches in diameter on ironing surface, steam-block with iron.

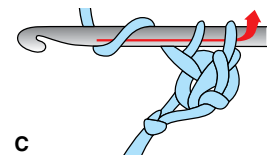
After Coaster is dried, remove pins. **CW**



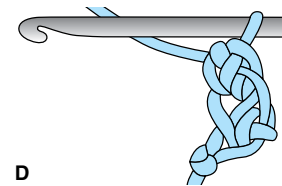
A



B



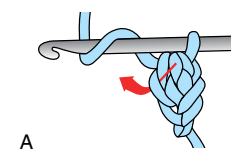
C



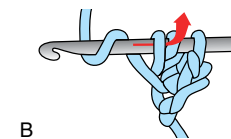
D

First Foundation Single Crochet

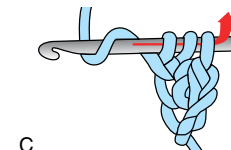
Next Foundation Single Crochet



A



B

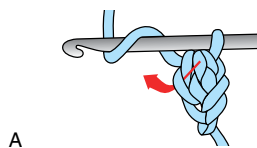


C

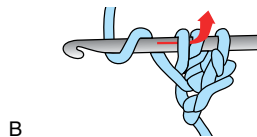


D

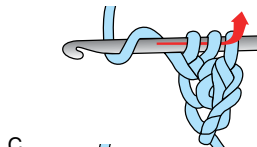
Next Foundation Half Double Crochet Stitch



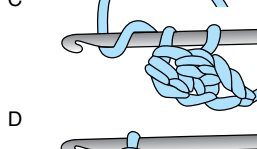
A



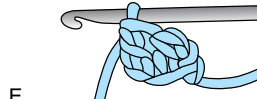
B



C



D



E

Next Double Crochet Foundation Stitch

Reel of Cables Shell

Continued from page 18

[sc, dc] in each st), [sc in next dc, dc in next sc] in next 56 [64, 72, 80, 88, 96] sts, (sc, dc) in last st, join in beg st, turn. (116 [128, 144, 160, 176, 192] sts)

Rnds 41 & 42 [41 & 42, 43 & 44, 46 & 47, 47 & 48, 49 & 50]: Rep rnd 12.

Rnd 43 [43, 45, 48, 49, 51]: Ch 1, [dc, sc] in first st (*inc*), [dc in next sc, sc in next dc] in next 58 [66, 74, 82, 90, 98] sts, inc in each of next 2 sts (*by working [dc, sc] in each st*), [sc in next dc, dc in next sc] in next 54 [58, 66, 74, 82, 90] sts, (dc, sc) in last st, join in beg st, turn. (120 [132, 148, 164, 180, 196] sts)

Rnds 44 & 45 [44 & 45, 46 & 47, 49 & 50, 50 & 51, 52 & 53]: Rep rnd 12.

Rnd 46 [46, 48, 51, 52, 54]: Ch 1, [sc, dc] in first st (*inc*), [sc in next dc, dc in next sc] in next 56 [60, 68, 76, 84, 92] sts, inc in each of next 2 sts (*by working [sc, dc] in each st*), [sc in next dc, dc in next sc] in next 60 [68, 76, 84, 92, 100] sts, (sc, dc) in last st, join in beg st, turn. (124 [136, 152, 168, 184, 200] sts)

Rnds 47 & 48 [47 & 48, 49 & 50, 52 & 53, 53 & 54, 55 & 56]: Rep rnd 12.

CABLE BORDER

Rnd 1 (RS): Ch 2, dc each st around, join in beg ch-2 **do not turn**.

Rnd 2 (RS): Ch 2, [sk 2 sts, fptr around next 2 sts, fptr around 2 sk sts] around, join in beg ch-2, turn. (31 [34, 38, 42, 46, 50] cables)

Rnd 3 (WS): Ch 2, bpdc around each st around, join in beg ch-2, turn.

Rnds 4–11: [Rep rnds 2 and 3 alternately] 4 times.

EYELET TRIM

Rnd 12 (RS): Ch 1, (sc, ch 3, dc) in first st, sk next st, [(sc, ch 3, dc) in next st, sk next st] around, join in beg sc. Fasten off.

RIGHT ARMHOLE TRIM

Rnd 1 (RS): Join cotton on front where cabled collar meets body of Shell, ch 1, sc evenly around to cabled collar, rep rnd 12 of Eyelet Trim around Collar, join in beg sc. Fasten off.

LEFT ARMHOLE TRIM

Rnd 1 (RS): Join cotton on back where cabled collar meets body of Shell, ch 1, sc evenly around to cabled collar, rep rnd 12 of Eyelet Trim around Collar, join in beg sc. Fasten off. **CW**

Flower Petals Doily

Continued from page 21

CENTER

Flower

Rnd 1: With maize, ch 10, join in first ch to form a ring, **ch 3** (*see Pattern Notes*), 23 dc in ring, join in 3rd ch of beg ch-3. (24 dc)

Rnd 2: Ch 1, sc in same dc as beg ch-1, ch 3, sk next dc, [sc in next dc, ch 3, sk next dc] around, join in beg sc. (12 ch-3 sps)

Rnd 3: Ch 1, 5 sc in each ch-3 sp around, join in first sc. (60 sc)

Rnd 4: Sl st in 3rd sc of 5-sc group, ch 1, sc in same sc as beg ch-1, ch 5, [sc in 3rd sc of next 5-sc group, ch 5] around, join in beg sc. (12 ch-5 lps, 12 sc)

Rnd 5: Ch 1, sc in same sc as beg ch-1, ch 6, [sc in next sc, ch

6] around, join in first sc. (12 ch-6 lps, 12 sc)

Rnd 6: Ch 1, sc in same sc as beg ch-1, ch 8, [sc in next sc, ch 8] around, join in first sc. (12 ch-8 lps, 12 sc)

Rnd 7: Ch 1, sc in same sc as beg ch-1, ch 10, [sc in next sc, ch 10] around, join in first sc. Fasten off. (12 ch-10 lps, 12 sc)

Rnd 8: Join delft in any ch-5 sp of rnd 4, ch 1, (sc, 7 dc, sc) in same sp as beg ch-1, (sc, 7 dc, sc) in each rem ch-5 sp around, join in first sc. Fasten off. (12 petals)

Rnd 9: Join delft in any ch-6 sp of rnd 5, ch 1, (sc, 9 dc, sc) in same sp as beg ch-1, (sc, 9 dc, sc) in each rem ch-6 sp around, join in first sc. Fasten off. (12 petals)

Rnd 10: Join delft in any ch-8 sp of rnd 6, ch 1, (sc, 4 dc, 3 tr, 4 dc, sc) in same sp as beg ch-1, (sc, 4 dc, 3 tr, 4 dc, sc) in each

rem ch-8 sp around, join in first sc. Fasten off. (12 petals)

Rnd 11: Join olive in any ch-10 sp of rnd 7, ch 1, (sc, 2 dc, ch 3, 2 dc, sc) twice in same sp as beg ch-1, (sc, 2 dc, ch 3, 2 dc, sc) twice in each rem ch-10 sp around, join in beg sc. Fasten off. (24 ch-3 sps)

Rnd 12: Join frosty green in any ch-3 sp of rnd 11, ch 3, 4 dc in same ch-3 sp as beg ch-3, 5 dc in each rem ch-3 sp around, join in 3rd ch of beg ch-3. Fasten off. (120 dc)

Rnd 13: Join olive in beg ch-3 of previous rnd **OR** first dc of any 5-dc group, **ch 4** (*see Pattern Notes*), [sk next dc, dc in next dc, ch 1] twice, *[dc in next dc, ch 1, sk next dc] twice, dc in next dc, ch 1, rep from * around, join in 3rd ch of beg ch-4. (72 dc)

Rnd 14: Ch 5, [dc in next dc,

ch 2] around, join in 3rd ch of beg ch-5. (72 dc, 72 ch-2 sps)

Rnd 15: Rep rnd 14.

Rnd 16: Ch 6 (see *Pattern Notes*), [dc in next dc, ch 3] around, join in 3rd ch of beg ch-6. (72 dc, 72 ch-3 sps)

Rnds 17 & 18: Rep rnd 16.

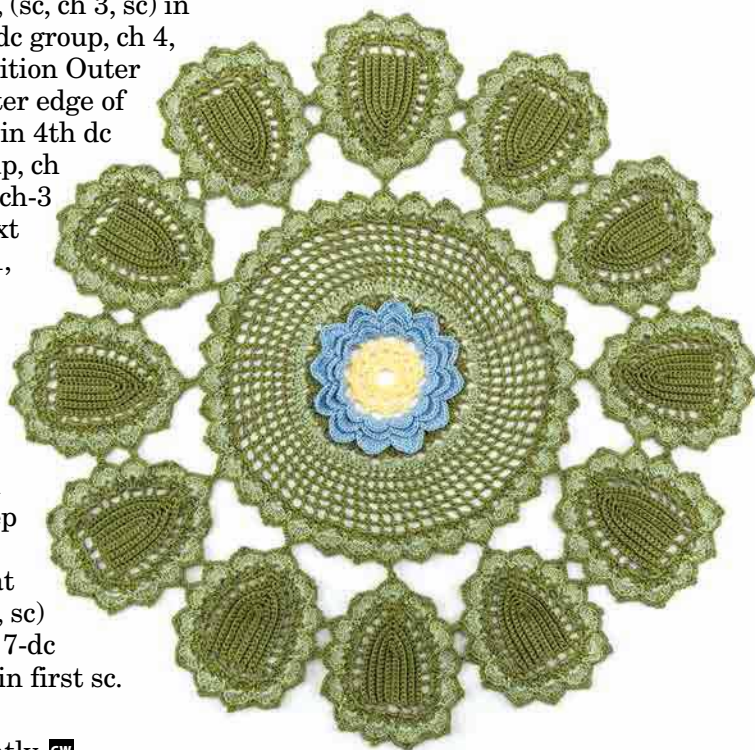
Rnd 19: Sl st in next ch-3 sp, **beg shell** (see *Special Stitches*) in same ch-3 sp, sc in next ch-3 sp, [shell in next ch-3 sp, sc in next ch-3 sp] around, join in 3rd ch of beg ch-3. Fasten off. (36 shells, 36 sc)

Rnd 20: Join frosty green in any sc, ch 1, sc in same sc as beg ch-1, 7 dc in ch-3 sp of next shell, [sc in next sc, 7 dc in ch-3 sp of next shell] around, join in beg sc. Fasten off.

Rnd 21: Join olive in first sc of previous rnd, ch 1, sc in same sc

as beg ch-1, ch 4, (sc, ch 3, sc) in 4th dc of next 7-dc group, ch 4, sc in next sc, position Outer Petal ring on outer edge of Center, *ch 4, sc in 4th dc of next 7-dc group, ch 1, sl st in center ch-3 sp at point of next Outer Petal, ch 1, sc in same dc as last sc made, ch 4, sc in next sc**, [ch 4, (sc, ch 3, sc) in 4th dc of next 7-dc group, ch 4, sc in next sc] twice, rep from * 11 times, ending last rep at **, ch 4, (sc, ch 3, sc) in 4th dc of next 7-dc group, ch 4, join in first sc. Fasten off.

Steam-press lightly. 



CALIFORNIA

The Lazy Daisy
2127 E. Florida Ave.
Hemet, CA 92544

CONNECTICUT

Pamela Roose
386 Main St., 1st Floor
Middletown, CT 06457

FLORIDA

Yarns & Things
5211 Dogwood Dr.
Milton, FL 32570

GEORGIA

Ewe Knit
815 Cedar St.
Carrollton, GA 30117

IDAHO

Alpaca Direct, LLC
1016 W. Hayden Ave.
Hayden, ID 83835

ILLINOIS

Lake St. Floral, Inc.
112 N. Chestnut St.
Kewanee, IL 61443

**Lynda's Crafts
Books & More**
110 E. Pleasant St.
Taylorville, IL 62568

IOWA

**BeeHive Crafts &
Framing**
404 Grand Ave.
Spencer, IA 51301

**Village
Needlework**
1123 Seventh Ave.
Marion, IA 52302

NEW MEXICO

Warm Hearts Yarn
13 Sherwood Blvd.
Los Alamos, NM 87544

NEW MEXICO

Warm Hearts Yarn
13 Sherwood Blvd.
Los Alamos, NM 87544

NEW YORK

**Yarn Over Crafts &
Hobbies**
182 Delaware St.
Walton, NY 13856

Crochet World[®]

MAGAZINE is *fine* STORES
available at these

OHIO

Crochet Innovations
7660 Chippewa Road
Brecksville, OH 44141

OREGON

Fabric Depot
700 S.E. 122nd Ave.
Portland, OR 97233

PENNSYLVANIA

Good's Store Dist.
165 Earland Drive
New Holland, PA 17557

VIRGINIA

**Needles in the
Haymarket, LLC**
15125 Washington St. #108
Haymarket, VA 20169

Old Town Yarnery
205 William St.
Fredericksburg, VA 22401

Yarn Cloud
13895 Hedgewood Drive,
Ste. 113
Woodbridge, VA 22193

PUERTO RICO

Tru-Tru Creations
Ave Las Americas
CC-12 Res Bairoa,
Caguas, PR 00725

THE WEB

Superior Home Arts
www.superiorhomearts.com

This autoshop listing is provided as a service to our readers and should not be considered an endorsement from *Crochet World* magazine.

Beach Pebble Pendants

Continued from page 27

Secure crimp and clasp to each end of Cord Lengths.



Note: If desired, make Cord Length extra long and simply knot ends tog to fit over one's head with no need for crimps or clasps, or use purchased cording at craft supply store.

ASSEMBLY

Pendant No. 1

Using photo as a guide, wrap front motif over small stone and with single strand of natural and tapestry needle, sew Front Shell motif to Back Motif as follows.

Secure with several passes at the top, then [pass through next ch-1 sp, sk next sc on Front Shell, pass through next sc on Front Shell] around to where Front Shell ends (*this will leave part of the Back Motif unattached*), secure with several passes here and knot end. Fasten off and weave in ends.

Thread Cord through top sts of Pendant.



Pendant No. 2

Insert large stone into Edging and Center Motif. If needed, use a length of natural through Edging to gather, tighten and make fit snugly.

Thread Cord through top sts of Pendant. **CW**

Lil' Miss Hootie

Continued from page 50

Rnd 15: Rep rnd 7. Stuff Head with fiberfill.

BODY

Rnd 16: [2 sc in next sc, sc in each of next 3 sc] around. (30 sc)

Rnd 17: [2 sc in next sc, sc in each of next 4 sc] around. (36 sc)

Rnd 18: [2 sc in next sc, sc in each of next 5 sc] around. (42 sc)

Rnds 19–29: Rep rnd 7.

Stuff Body with fiberfill, continue stuffing as work progresses.

Rnd 30: [Sc dec over next 2 sc, sc in each of next 5 sc] around. (36 sc)

Rnd 31: [Sc dec over next 2 sc, sc in each of next 4 sc] around. (30 sc)

Rnd 32: [Sc dec over next 2 sc, sc in each of next 3 sc] around. (24 sc)

Rnd 33: [Sc dec over next 2 sc, sc in each of next 2 sc] around. (18 sc)

Rnd 34: [Sc dec over next 2 sc, sc in next sc] around. (12 sc)

Rnd 35: [Sc dec over next 2 sc] around, **join** (*see Pattern Notes*) in beg sc, leaving 12-inch length, fasten off. (6 sc)

EAR

Make 2.

Rnd 1: With size G hook and seaspray mist, work 4 sc in slip ring. (4 sc)

Rnd 2: 2 sc in each sc around. (8 sc)

Rnd 3: [2 sc in next sc, sc in each of next 3 sc] around, join

in beg sc, leaving 8-inch length, fasten off. **Do not** stuff Ears. (10 sc)

BEAK

Rnd 1: With size G hook and rust, work 3 sc in slip ring. (3 sc)

Rnd 2: 2 sc in next sc, sc in each of next 2 sc. (4 sc)

Rnd 3: [2 sc in next sc, sc in next sc] twice, join in beg sc, leaving 8-inch length, fasten off. **Do not** stuff Beak. (6 sc)

FEET

Make 2.

Row 1: With size G hook and rust, ch 2, 3 sc in 2nd ch from hook, turn. (3 sc)

Row 2: Ch 1, 2 sc in first sc, sc in next sc, 2 sc in last sc, turn. (5 sc)

Shop.Crochet.Create.

Row 3: Ch 1, 2 sc in first sc, sc in each of next 3 sc, 2 sc in last sc, turn. (7 sc)

Row 4: Ch 1, sc in each sc across, turn.

Rnd 5: Now working in rnds, 3 hdc in first sc, [sl st in each of next 2 sc, 3 hdc in next sc] twice, working down side edge of row, work 4 sc evenly sp down side of foot, 2 sc in opposite side of foundation ch of row 1, 4 sc evenly sp across side edge of foot. (23 sts)

Rnd 6: Working in **back lp** only (see *Stitch Guide*), [sc in each of next 3 sts, sc dec in next 2 sts] twice, sc in each of next 7 sts, sc dec in next 2 sts, sc in each of next 4 sts. (20 sc)

Rnd 7: [Draw up a lp in each of next 3 sc (4 lps on hook), yo, draw through all 4 lps on hook, sc in next sc] 3 times, sc in each of next 8 sc. (14 sc)

Rnd 8: [Sc dec in next 2 sc] 7 times, join in beg sc, leaving a 12-inch length, fasten off. **Do not** stuff Feet. (7 sc)

WING

Make 2.

Rnd 1: With size G hook and pink yarn, work 4 sc in slip ring. (4 sc)

Rnd 2: 2 sc in each sc around. (8 sc)

Rnd 3: [2 sc in next sc, sc in next sc] around. (12 sc)

Rnd 4: [2 sc in next sc, sc in each of next 2 sc] around. (16 sc)

Rnd 5: [2 sc in next sc, sc in each of next 3 sc] around. (20 sc)

Rnd 6: [2 sc in next sc, sc in each of next 4 sc] around. (24 sc)

Rnd 7: [2 sc in next sc, sc in each of next 11 sc] around. (26 sc)

Rnd 8: [2 sc in next sc, sc in each of next 12 sc] around. (28 sc)

Advertise
here for only
\$95!

Call Joan:
(877) 282-4724,
ext. 4504



Best Darn Yarn Tenders
SkerinKnittingandCrochet.com
Patterns, Tips, How-Tos & Free Stuff


Free S/H!

Crochet By Numbers



CrochetbyNumbers.com


Crochet Village



Order this pattern and much more at...
www.CrochetVillage.com


Promote your
event here!

Call Joan:
(877) 282-4724,
ext. 4504



Denise2Go
Colorful, comfortable
hooks for Tunisian or
standard crochet.
Made in the USA.

888-831-8042
Knitdenise.com



Denise
INTERCHANGEABLE
Knitting & Crochet

Rnd 9: [2 sc in next sc, sc in each of next 13 sc] around. (30 sc)

Rnds 10 & 11: Sc in each sc around.

Rnd 12: [Sc dec over next 2 sc, sc in each of next 13 sc] around. (28 sc)

Rnd 13: [Sc dec over next 2 sc, sc in each of next 12 sc] around. (26 sc)

Rnd 14: [Sc dec over next 2 sc, sc in each of next 11 sc] around. (24 sc)

Rnd 15: [Sc dec over next 2 sc, sc in each of next 4 sc] around. (20 sc)

Rnd 16: [Sc dec over next 2 sc, sc in each of next 3 sc] around. (16 sc)

Rnd 17: [Sc dec over next 2 sc, sc in each of next 2 sc] around. (12 sc)

Rnd 18: [Sc dec over next 2 sc, sc in next sc] around. (8 sc)

Rnd 19: [Sc dec over next 2 sc] around, join in beg sc, leaving 12-inch length, fasten off.

Do not stuff Wings. (4 sc)

OUTER EYE

Make 2.

Rnd 1: With size G hook and white, work 6 sc in slip ring. (6 sc)

Rnd 2: 2 sc in each sc around. (12 sc)

Rnd 3: [2 sc in next sc, sc in next sc] around, join in beg sc, leaving 8-inch length, fasten off. (18 sc)

PUPIL

Make 2.

Rnd 1: With size F hook and black, work 6 sc in slip ring. (6 sc)

Rnd 2: 2 sc in each sc around, join in beg sc, leaving 8-inch length, fasten off. (12 sc)

ASSEMBLY

Optional: Use straight pins to attach Eyes, Beak, Ears and Wings prior to stitching them down so you can view placement.

Using photo as a guide, sew Pupil slightly off center to Outer Eye. Sew pearl bead to each Pupil to upper left edge centered in the sc of rnd 2. Since the back of the Outer Eye will not be seen, be sure to knot your thread securely at the back, and add a dab of liquid seam sealant or fabric glue to prevent it from coming untied.

Sew eyes to Head with the outer top edge of the Outer Eye over rnd 5 of the Head and the very bottom of the eye over rnd 10. The eyes should just touch at center of the face. Each pupil should appear to be looking up and to the left.

Sew Beak to the face just under the eyes. The top edges should very nearly touch the edge of each eye.

Sew each Ear to side of the Head with the upper edge of each Ear over rnd 4 of Head. There should be 1 sc width between outer edge of the eye and the Ear.



Fold each Wing flat. It will naturally become slightly curved. Position each Wing on the Body with the top tilted forward slightly so that the tip faces backward (*rnd 19*). The tip of each Wing (*rnd 1*) will be even with rnd 15 of Head. When stitching the Wings to the body, place your stitching about $\frac{1}{4}$ inch from the outer edges of the Wings and follow the sc pattern so your sts will not be visible from the outside. St from top of each Wing down the side at the front of the Body, stopping at rnd 11 of Wing. Sew across the

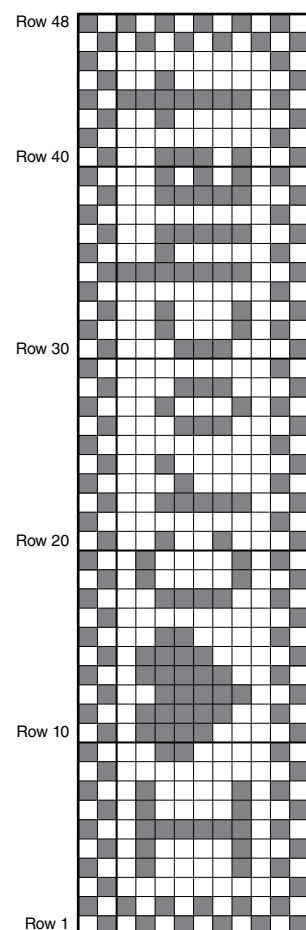
Wing (*leaving the tip unsewn*) to the back of the Body. St up other side of Wing at the back of the Body to top. Leaving the tips of the Wings unsewn allows you to curl them up with your fingers giving them a whimsical shape.

Sew the Feet to bottom of Owl with narrow ends slightly turned toward center and just slightly to back of the final rnd. **CW**

"I Love Crochet" Sampler

Continued from page 35






STITCH KEY	
	Space
	Block



"I Love Crochet" Sampler Chart

Standard Yarn Weight System

Categories of yarn, gauge ranges, and recommended hook sizes.

Yarn Weight Symbol & Category Names	 0 LACE	 1 SUPER FINE	 2 FINE	 3 LIGHT	 4 MEDIUM	 5 BULKY	 6 SUPER BULKY
Type of Yarns in Category	Lace, Size 10 Crochet Thread	Sock, Fingering, Baby	Sport, Baby	DK, Light Worsted	Worsted, Afghan, Aran	Chunky, Craft, Rug	Super Chunky, Roving
Crochet Gauge* Ranges in Single Crochet to 4 inches	32–42 sts	21–32 sts	16–20 sts	12–17 sts	11–14 sts	8–11 sts	5–9 sts
Recommended Hook in Metric Size Range	1.50mm– 2.25mm	2.25–3.5mm	3.5–4.5mm	4.5–5.5mm	5.5–6.5mm	6.5–9mm	9mm and larger
Recommended Hook– U.S. Size Range	B1–8	B1–E4	E4–7	7–I9	I9–K10½	K10½– M13	M/N13 and larger

*Guidelines only: The above reflect the most commonly used gauges and hook sizes for specific yarn categories.

Buyer's Guide

Annie's

AnniesCatalog.com

Berroco Inc.

Weekend DK

1 Tupperware Drive, Suite 4
North Smithfield, RI 02896-6815
(401) 769-1212
www.berroco.com

Blumenthal Lansing

La Mode buttons,

La Petite buttons

(800) 553-4158
www.buttonlovers.com

Coats & Clark

Aunt Lydia's Bamboo,

Aunt Lydia's Classic Crochet

Consumer Services
P.O. Box 12229
Greenville, SC 29612-0229
(800) 648-1479
www.makeitcoats.com

Crochet By Numbers

www.crochetbynumbers.com

Crochet Village

www.crochetvillage.com

Crystal Palace - Straw into Gold, Inc.

Mini Mochi

160 23rd St.,
Richmond, CA 94804
www.straw.com

Denise Interchangeable Knitting & Crochet

1618 Miller School Road
Charlottesville, VA 22903
(888) 831-8042
www.knitdenise.com

Handy Hands

578 N. 1800 E.
Paxton, IL 60957
(217) 379-3802
www.hhtatting.com

JoAnn Fabric and Craft Stores®

Everything Mary
(888) 739-4120
www.joann.com

KnitPicks

Shadow Tonal
13118 N.E. 4th St.
Vancouver, WA 98684
(800) 574-1323
www.knitpicks.com

Lily Sugar 'n Cream

Distributed by Yarnspirations.com
320 Livingstone Ave. S., Box 40
Listowel, ON
N4W 3H3 Canada
(888) 368-8401
www.yarnspirations.com

Lion Brand Yarn

Babysoft, Kitchen Cotton, Vanna's Choice
135 Kero Road
Carlstadt, NJ 07072
(800) 258-YARN (9276)
www.lionbrand.com

Omega

La Perla

Distributed by Creative
Yarn Source
(614) 205-3210
www.creativeyarnsource.com

Premier Yarns

Cotton Fair, Deborah Norville

Serenity Garden

2800 Hoover Road
Stevens Point, WI 54481
(888) 458-3588
www.premieryarns.com

Red Heart Yarns

Anne Geddes Baby,

With Love Super Saver

Consumer Services
P.O. Box 12229
Greenville, SC 29612-0229
(800) 648-1479
www.redheart.com

Skerin Knitting & Crochet

www.skerinknittingandcrochet.com

Tahki Stacy Charles Inc.

Tahki Cotton Classic

70-60 83rd St., Building #12
Glendale, NY 11385
(877) 412-7467
www.tahkistacycharles.com

Skill Levels

1 2 3 4 5 6 BEGINNER

Projects for first-time crocheters using basic stitches, with little or no shaping.

1 2 3 4 5 6 CONFIDENT BEGINNER

Projects for new crocheters who are comfortable with the beginner basic stitches and are ready to combine them into short pattern sequences. Skills include simple increasing, decreasing and minimal color changes.

1 2 3 4 5 6 EASY

Projects using basic stitches, repetitive stitch patterns, simple color changes and easy shaping and finishing. Simple in-the-round projects, such as coasters, hot mats, flowers, hats, neck warmers and cowls fall within this skill category, as well as the ability to read simple stitch charts and keys.

1 2 3 4 5 6 INTERMEDIATE

Projects that incorporate a wide variety of stitch techniques beyond the basics, such as shells, fans, popcorns, clusters, post stitches, basic cables, lace, simple intarsia, shaping and finishing. The crocheter has the ability to read more advanced stitch pattern charts, such as lace and cable charts.

1 2 3 4 5 6 MODERATELY CHALLENGING

Projects that utilize a wide variety of stitches and techniques such as those noted above, as well as more detailed colorwork, shaping, construction and finishing.

1 2 3 4 5 6 CHALLENGING

Projects that require a more intuitive understanding of a pattern or chart and that also include advanced stitches and techniques, as well as more intricate methods such as intarsia, cables, lace, stranded colorwork with numerous color changes and advanced shaping and construction techniques.

Coming in August!

1-2-3-4 Afghan

A repeating pattern of bobbles in a single row followed by boxes of bobbles in two rows then three rows and four rows gives this interesting throw its name.



Rose Garden Doily

A beautiful bouquet of roses takes center stage in this gorgeous, oval-shaped doily that will add the perfect touch of vintage charm to even a contemporary decor.



Bold & Beautiful Tote

Worked in multiple strands of worsted-weight yarn held together, this cute, flower-adorned tote is not only bright and colorful, it's sturdy and durable as well.



On Sale July 1, 2014

STITCH GUIDE

FOR MORE COMPLETE INFORMATION,
VISIT ANNIESCATALOG.COM/STITCHGUIDE

STITCH ABBREVIATIONS

begbegin/begins/beginning
bpdcback post double crochet
bpscback post single crochet
bptrback post treble crochet
CCcontrasting color
ch(s)chain(s)
ch-refers to chain or space previously made (i.e., ch-1 space)
ch sp(s)chain space(s)
cl(s)cluster(s)
cmcentimeter(s)
dcdouble crochet (singular/plural)
dc decdouble crochet 2 or more stitches together, as indicated
decdecrease/decreases/decreasing
dtrdouble treble crochet
extextended
fpdcfront post double crochet
fpscfront post single crochet
fptrfront post treble crochet
ggram(s)
hdchalf double crochet
hdc dechalf double crochet 2 or more stitches together, as indicated
incincrease/increases/increasing
lp(s)loop(s)
MCmain color
mmmillimeter(s)
ozounce(s)
pcpopcorn(s)
remremain/remains/remaining
rep(s)repeat(s)
rnd(s)round(s)
RSright side
scsingle crochet (singular/plural)
sc decsingle crochet 2 or more stitches together, as indicated
skskip/skipped/skipping
sl st(s)slip stitch(es)
sp(s)space(s)/spaced
st(s)stitch(es)
togtogether
trtreble crochet
trtrtriple treble
WSwrong side
yd(s)yard(s)
yoyarn over

YARN CONVERSION

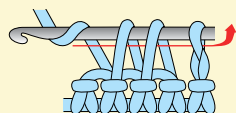
OUNCES TO GRAMS	GRAMS TO OUNCES
1.....28.4	25.....7/8
2.....56.7	40.....1 1/2
3.....85.0	50.....1 3/4
4.....113.4	100.....3 1/2

UNITED STATES UNITED KINGDOM

sl st (slip stitch)	=	sc (single crochet)
sc (single crochet)	=	dc (double crochet)
hdc (half double crochet)	=	htr (half treble crochet)
dc (double crochet)	=	tr (treble crochet)
tr (treble crochet)	=	dtr (double treble crochet)
dtr (double treble crochet)	=	ttr (triple treble crochet)
skip	=	miss

Single crochet decrease (sc dec):

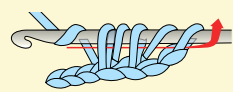
(Insert hook, yo, draw lp through) in each of the sts indicated, yo, draw through all lps on hook.



Example of 2-sc dec

Half double crochet decrease (hdc dec):

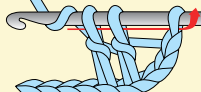
(Yo, insert hook, yo, draw lp through) in each of the sts indicated, yo, draw through all lps on hook.



Example of 2-hdc dec

Double crochet decrease (dc dec):

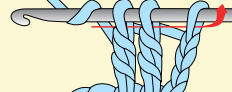
(Yo, insert hook, yo, draw lp through, yo, draw through 2 lps on hook) in each of the sts indicated, yo, draw through all lps on hook.



Example of 2-dc dec

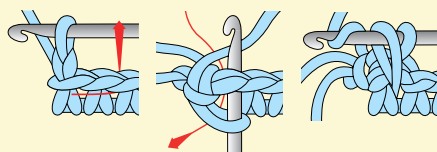
Treble crochet decrease (tr dec):

Hold back last lp of each st, tr in each of the sts indicated, yo, pull through all lps on hook.

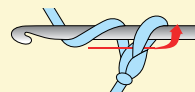


Example of 2-tr dec

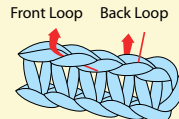
Reverse single crochet (reverse sc): Ch 1, sk first st, working from left to right, insert hook in next st from front to back, draw up lp on hook, yo and draw through both lps on hook.



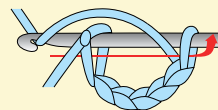
Chain (ch): Yo, pull through lp on hook.



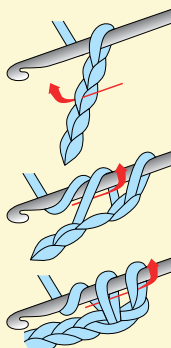
Front loop (front lp) Back loop (back lp)



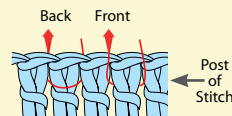
Slip stitch (sl st): Insert hook in st, pull through both lps on hook.



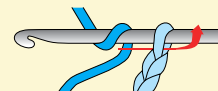
Single crochet (sc): Insert hook in st, yo, pull through st, yo, pull through both lps on hook.



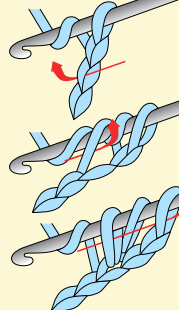
Front post stitch (fp): Back post stitch (bp): When working post st, insert hook from right to left around post of st on previous row.



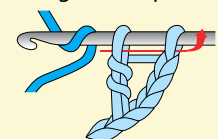
Chain color change (ch color change): Yo with new color, draw through last lp on hook.



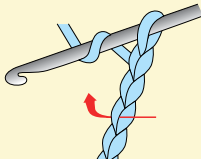
Half double crochet (hdc): Yo, insert hook in st, yo, pull through st, yo, pull through all 3 lps on hook.



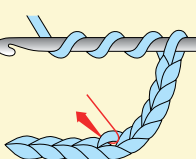
Double crochet color change (dc color change): Drop first color, yo with new color, draw through last 2 lps of st.



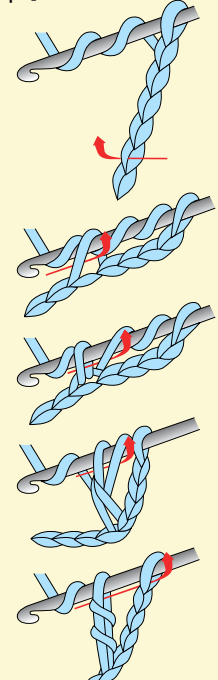
Double crochet (dc): Yo, insert hook in st, yo, pull through st, [yo, pull through 2 lps] twice.

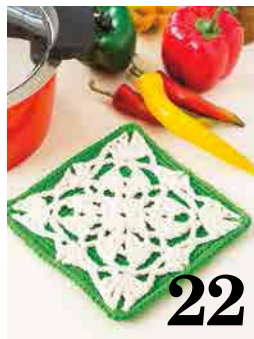
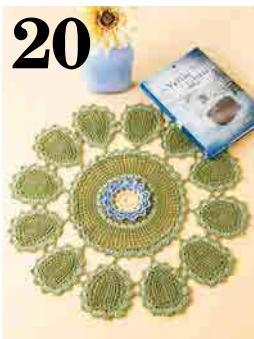


Double treble crochet (dtr): Yo 3 times, insert hook in st, yo, pull through st, [yo, pull through 2 lps] 4 times.



Treble crochet (tr): Yo twice, insert hook in st, yo, pull through st, [yo, pull through 2 lps] 3 times.





On-the-Go FASHIONS *for 18-inch Dolls*

19
designs



EASY TO INTERMEDIATE SKILL LEVELS



Order today at **AnniesCatalog.com**



Fleur de Lis Shawl

Enjoy the soft comfort and silky drape of **AUNT LYDIA'S®** Bamboo Crochet Thread.

Fleur de Lis Shawl
LC4048

This and other free patterns available at www.redheart.com



Aunt Lydia's
Crochet Thread™