

34 Must-Make Designs for Family & Home

Crochet World®

The Magazine for Crochet Lovers

APRIL 2012 • Crochet-World.com

Spring Is in The Air!

Fun, Fresh Projects to Celebrate the Season

Fresh Home Accents

- Spirals Rug
- Tapestry Woven Throw
- Starflower Table Topper

Cute for Kids

- Ballerina Mouse
- Patchwork Puppy
- Ladybug, Ladybug



Crazy for Cupcakes
Page 20

Cute Crochet for Girls

- Designs for girls, sizes 2T-6 years
- Easy to follow instructions with minimal shaping
- Intermediate skill level

New!
from
Annie's

871204
\$8.95



ORDER TODAY AT ANNIESATTIC.COM



Keycode AXBBCR



24



30



22

Crochet World[®]

APRIL 2012 • Volume 35, No. 2

Find us on the Web at Crochet-World.com

FRESH HOME ACCENTS

16 Starflower Table Topper
Crochet a large, heirloom floral doily for your table.

20 Crazy for Cupcakes
Add fun to your kitchen with cupcake hot mitts!

22 Spirals Rug
Stitch up a refreshingly different rug for your decor.

24 Breath of Spring Coverlet
Brighten up a pretty bed with a vivid green coverlet.

26 Tapestry Woven Throw
Spring pastels mix it up in a woven filet pattern.

28 Mocha & Cream
Soft neutrals create a delicious café au lait look.

CUTE FOR KIDS

30 Ballerina Mouse
This little dancer leaps and pirouettes with ease!

34 Ladybug, Ladybug
Look who's hiding in the flower garden!

36 Kids' Travel Neck Pillow
A restful pillow makes long car trips more comfortable.

38 Darling Daisies
Girls will love these cute daisy hair clips and bracelet.

FEATURES

40 Lacy Fans Bag
This roomy sling-style bag makes a versatile carryall.

42 Explorea Trails Trellis Wrap
Add free-form pizzazz to a simple wrap.

44 A Study in Black & White
A classic color combo gives this jewelry sophisticated style.

46 Bureau Bag
This pretty bag keeps personal items neat and safe.

48 Aromatherapy Eye Pillow
This soothing pillow eases headaches or eyestrain.

49 Nine-Patch Pillow
Create a vintage quilt pattern in crochet.

52 Four-Squares Baby Blanket
Four large mitered squares form a cute striped blanket.

DEPARTMENTS

4 First Row

6 Winner's Circle
Rickrack & Roses Sweater

8 Beginner's Luck
L'Astrée Scarf

9 Fast, Easy, Fun!
Pansy Tea Light

10 Just Threads
Evening Star

12 Scrap Delights **NEW!**
Patchwork Puppy

14 Touch of Style
Orchid Lace Top

54 Crochet Connections

55 Back Talk

55 Product Review

59 Web Bonus Patterns

64 Buyer's Guide

64 Last Stitch

64 Skill Levels & Yarn Weights

65 Stitch Guide

66 Design Directory

FOR SERVICE ON YOUR SUBSCRIPTION, including change of address, visit online at Crochet-World.com (select "Customer Care"). Or send an email to Customer_Service@Crochet-World.com. Or write to *Crochet World* Customer Service, P.O. Box 9001, Big Sandy, TX 75755. Please enclose your label from a recent issue. Or call (800) 829-5865 weekdays, 8 a.m. to 5 p.m. CST.



Our Gift to You!

I'm pleased to announce a valuable new benefit for all our faithful Crochet World subscribers. You now have full access to each issue online, plus access to two years of digital back issues, all at no extra cost!

Simply go to www.Crochet-World.com and log in. There are handy sign-in links on the left side of the page and in the upper right. Once logged in, you'll be able to see each full issue right on your computer! And because they're in PDF format, they're easy to search, easy to enlarge, easy to print and easy to store for future reference. We value you as a subscriber, and trust this added access is a real benefit to you. Let us know what you think!

We just love hearing from our readers! We really appreciate your letting us know what you would like to see in the magazine (or not), and we take your suggestions very much to heart.

Recently, you have been asking for more cute toys for the kids and grandkids, and great scrap projects. In this issue, you'll find those wishes turned into some wonderful projects that are sure to be loved and appreciated.

For scrap-happy crocheters, we are introducing a brand-new regular feature, Scrap Delights, which will offer up a fun, creative project in each issue that's especially designed to help use up some of your odds and ends of yarn and thread. To kick things off, we've got the cutest (we think) Patchwork Puppy you'll find anywhere. He just begs to be cuddled!

For the toy lovers, in addition to the adorable puppy, we've also got the most darling little Ballerina Mouse and a totally charming Ladybug. You just can't help but smile at them.

You'll find these delightful projects and so much more in this must-have issue that will have your hooks flying with loads of fun spring stitching!

Happy crocheting,

Carol Alexander

Letters and submissions to the editor should be sent via email to Editor@Crochet-World.com or through our website at Crochet-World.com. They can also be faxed to (260) 589-8093 or mailed to *Crochet World* Editor, DRG, 306 East Parr Road, Berne, IN 46711. Letters chosen for publication may be edited for clarity and space.

Every effort is made to return submissions if accompanied by return postage. Publisher assumes no responsibility for return or safety of unsolicited materials.



Crochet World[®]

Crochet-World.com

EXECUTIVE EDITOR Carol Alexander
CREATIVE DIRECTOR Brad Snow
PUBLISHING SERVICES DIRECTOR Brenda Gallmeyer

ASSISTANT EDITOR Sara Meyer
GRAPHIC DESIGNER Joe Taylor
COPY SUPERVISOR Deborah Morgan
COPY EDITORS Mary O'Donnell
Sam Schneider

TECHNICAL EDITORS Agnes Russell
Susanna Tobias
TECHNICAL ARTISTS Pam Gregory
Debera Kuntz

PRODUCTION ARTIST
SUPERVISOR Erin Brandt
PRODUCTION ARTISTS Jessi Butler
Debby Keel

PRODUCTION ASSISTANTS Marj Morgan
Judy Neuenschwander

PHOTOGRAPHY SUPERVISOR Tammy Christian
PHOTOGRAPHER Scott Campbell
PHOTO STYLIST Martha Coquat

CHIEF EXECUTIVE OFFICER David McKee
PUBLISHER Mike Klansek
VP PRODUCT Michele Fortune
VP MARKETING Greg Deily

MAGAZINE MARKETING DIRECTOR Scott Moss
NEWSSTAND CONSULTANT Angelo Gandino

HOW TO CONTACT US

Internet: Crochet-World.com
Mail: *Crochet World*, P.O. Box 9001,
Big Sandy, TX 75755
email: Customer_Service@Crochet-World.com
Telephone: (800) 829-5865
Include your full name, mailing address
and daytime phone number.

ADVERTISING

Advertising Sales Director: Michelle Thorpe
(877) 282-4724, ext. 213
email: Michelle_Thorpe@DRGnetwork.com

Crochet Account Manager: Norma Jean Fochs
(877) 282-4724, ext. 218
email: normajean_fochs@drgnetwork.com

Responsibility for advertised products lies with the advertisers. *Crochet World* will not knowingly publish fraudulent materials and is not liable for any damages arising from the purchase or use of any products. If you have any consumer complaints concerning goods purchased from our advertisers, please send us written notification to aid our screening process.

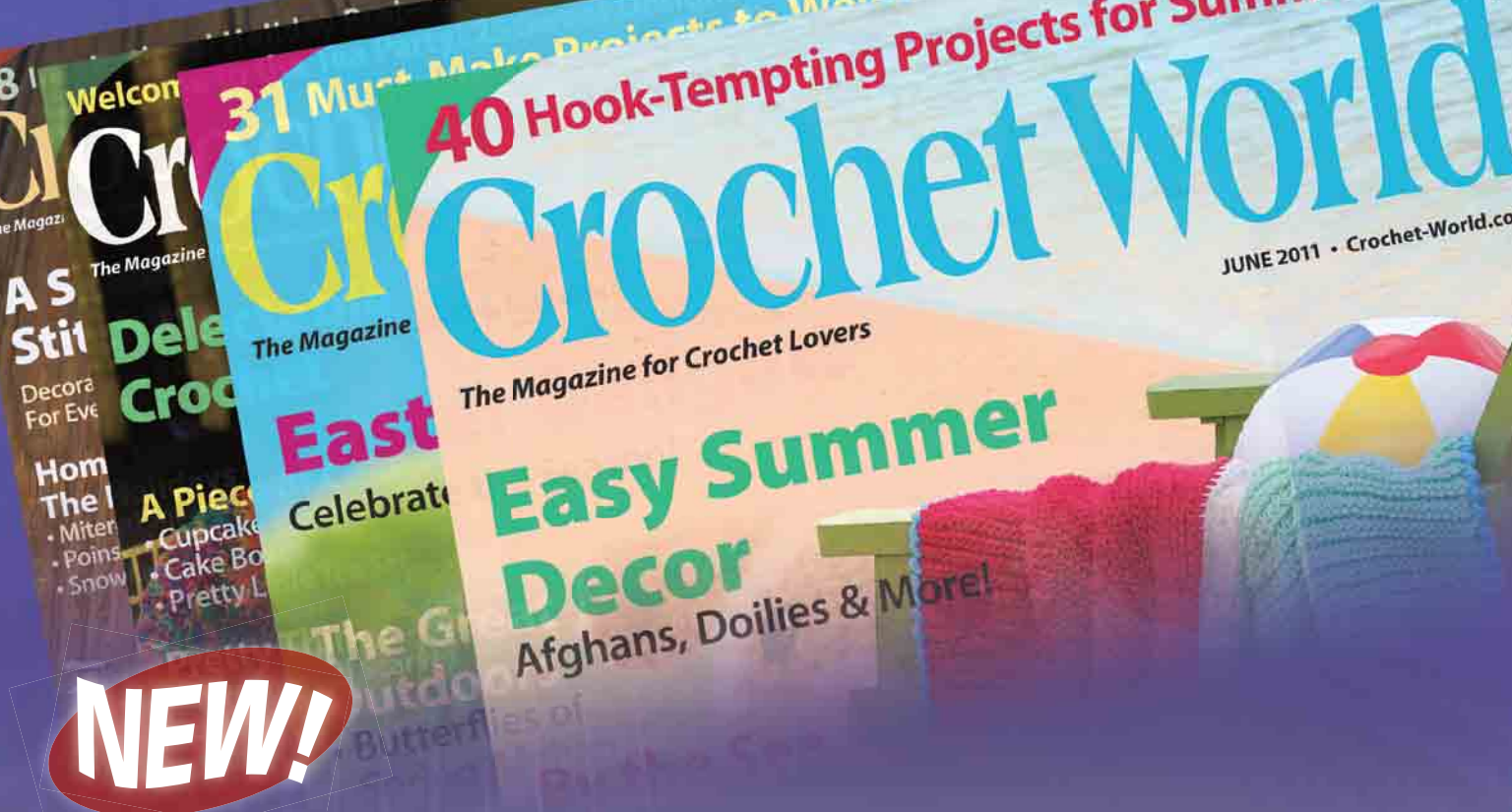
CROCHET WORLD (ISSN 0164-7962, USPS 511-570) is published bimonthly by DRG, 306 East Parr Road, Berne, IN 46711, (260) 589-4000. Periodicals postage paid at Berne, Ind., and additional mailing offices.

POSTMASTER: Send change of address to *Crochet World*, P.O. Box 9001, Big Sandy, TX 75755. Canada Post International Publications Mail Product (Canadian Distribution) Sales Agreement Number 40012306. Printed in USA. GST Account Number 13541 4274 RT. Copyright © 2012 DRG. All rights reserved. This publication may not be reproduced in part or in whole without written permission from the publisher.

SUBSCRIPTIONS: \$24.97 + \$1.98 p/p per year in USA, \$24.97 + \$9.98 p/p elsewhere, U.S. funds only. To subscribe, see Crochet-World.com or write to *Crochet World*, P.O. Box 9001, Big Sandy, TX 75755.

RETAIL STORES: If you are not presently being provided copies of this magazine by your area newsstand wholesaler, visit us at DRGWholesale.com.





Paid subscribers now get full access to each issue online, plus two years of digital back issues at no extra cost!

As a paid subscriber to *Crochet World* magazine, you now have instant access to two years of back issues!

You'll be able to easily search for patterns, articles and how-to techniques—it's all online for as long as you're a subscriber!



Zoom in on just what you want! Whether it's the current issue or a back issue, you can enlarge photos, text or diagrams to make things clearer and easier on your eyes.



Digital access is easy! Just log in at:

► **Crochet-World.com**

NO EXTRA COST!

You now get this terrific benefit as part of your print subscription!

Rickrack & Roses Sweater

Design by Kristen Stoltzfus

SKILL LEVEL

■ ■ ■ ■ ■ INTERMEDIATE

FINISHED SIZES

Instructions given fit infant's size 12 months; changes for 18 months and 24 months are in [].

FINISHED GARMENT MEASUREMENTS

Chest: 18 inches (12 months), [19 inches (18 months), 20 inches (24 months)]

Length: 9½ inches (12 months), [11 inches (18 months), 12 inches (24 months)]

Sleeve: 7½ inches (12 months), [8 inches (18 months), 8½ inches (24 months)]

MATERIALS

- Aunt Lydia's Fashion Crochet size 3 crochet cotton (150 yds per ball):
 - 3 [3, 4] balls #201 white (A)
 - 1 ball #32 candy pink (B)
- Size F/5/3.75mm crochet hook or size needed to obtain gauge
- Yarn needle
- 20mm decorative shank button

GAUGE

[Sc, shell] twice = 2 inches;
5 shell rows = 2 inches

PATTERN NOTES

Weave in loose ends as work progresses.

Join with slip stitch as indicated unless otherwise stated.



"Pretty as a rose" aptly describes this darling baby sweater accented with roses around the neckline.

Chain-3 at beginning of row counts as first double crochet unless otherwise stated.

Chain-5 at beginning of round counts as first double crochet and ch-2 unless otherwise stated.

SPECIAL STITCHES

Half shell: 3 dc in indicated st.

Shell: 5 dc in indicated st.

Increase shell (inc shell): 7 dc in indicated st.

Increase over increase shell (inc over inc shell): Sc in 2nd dc of inc shell, inc shell in 4th dc of inc shell, sc in 6th dc of inc shell.

V-stitch (V-st): (Dc, ch 2, dc) in indicated st.

Double V-stitch (double V-st): (Hdc, ch 2, sl st, ch 2, hdc) in same st.

Large double V-stitch (lg double V-st): (Dc, ch 3, sl st, ch 3, dc) in same st.

SWEATER

YOKE

Row 1: With A, ch 77, sc in 2nd ch from hook, sk next 2 chs, **shell** (see *Special Stitches*) in next ch, *sk next 2 chs, sc in next ch, sk next 2 chs, **inc shell** (see *Special Stitches*) in next ch, [sk next 2 chs, sc in next ch, sk next 2 chs, shell in next ch] twice, rep from * twice, sk next 2 chs, sc in next ch, sk next 2 chs, inc shell in next ch, sk next 2 chs, sc in next ch, sk next 2 chs, shell in next ch, sk next 2 chs, sc in last ch, turn. (8 shells, 4 inc shells, 13 sc)

Row 2: Ch 3 (see *Pattern Notes*), 2 dc in same st as ch-3, [sc in center dc of next shell, shell in next sc] across, working [**inc over inc shell** (see *Special Stitches*), shell in next sc] at each corner, ending with sc in last shell, **half shell** (see

Special Stitches) in last sc, turn. (11 shells, 4 inc over inc shells, 2 half shells, 16 sc)

Row 3: Ch 1, sc in center of half shell, [shell in sc, sc in center of shell] across, working inc over inc shell] at each corner, working last sc in center of half shell, turn. (16 shells, 4 inc over inc shells, 21 sc)

Rows 4 & 5: Rep rows 2 and 3. (24 shells, 4 inc over inc shells, 29 sc)

Row 6: Rep row 2. (2 half shells, 27 shells, 4 inc over inc shells, 32 sc)

Sizes 18 & 24 Months Only

Row [7]: Rep row 3. ([32] shells, [4] inc over inc shells, [37] sc)

Size 24 Months Only

Row [8]: Rep row 2. ([2] half shells, [35] shells, [4] inc over inc shells, [40] sc)

SLEEVE JOINING ROW

Sizes 12 & 24 Months Only

Ch 1, sc in center of half shell, *shell in sc, [sc in center of shell, shell in sc] across to inc over inc

Continued on page 56

Meet the Winner

Kristen Stolzhus

I live on a 15-acre farm in Pennsylvania's beautiful Cumberland Valley with my family of nine, where crocheting on the front porch swing on summer afternoons is just one facet of gracious living. I first picked up a crochet hook when I was 6, wanting to learn because Grandma and Mama crocheted, but set myself seriously to master the craft four years ago. Two weeks after I first considered freelance designing in July 2010, I sold my first design. I love all aspects of my work. It is delightful, to have so many options at my fingertips to see the picture in my mind work out through my fingers into a concrete design others will be able to duplicate. Ideas are constantly jostling for priority in my head! I am currently working with multiple magazines and yarn companies, and hope that many more of my designs may find favor for their originality and beauty with the crochet public.



How to Contact Us

For assistance concerning your subscription or any other questions, our Customer Service representatives are ready to assist you by whichever means are most convenient for you.

For online subscription assistance, go to

Crochet-World.com

Select Customer Care to:

- Subscribe
- Renew your subscription
- Pay your bill
- Check your account status (expiration and latest payment)
- Change your address or email address
- Report a duplicate issue
- Report a missing or damaged issue

Mail subscription questions to:

Crochet World magazine
P.O. Box 9001
Big Sandy, TX 75755

Email:

Customer_Service@Crochet-World.com

Call us Weekdays

8 a.m. to 5 p.m. CST:

Please have your address label, renewal or billing invoice handy.
(800) 829-5865

For Pattern Services:

Revisions: Crochet-World.com

Write: Crochet Pattern Services

306 East Parr Road, Berne, IN 46711

Email: Editor@Crochet-World.com

Call: (260) 589-4000, ext. 333, weekdays

The Crochet World guarantee:

If, for any reason, you're not completely satisfied with *Crochet World* magazine, you can cancel your subscription and receive a full and immediate refund of the entire subscription price. No questions asked.

Mailing Lists:

From time-to-time we make our subscriber list available to companies that sell goods and services by mail that we believe would interest our readers. If you would rather not receive such mailings, please send your current mailing label or an exact copy to *Crochet World*, Mail Preference Service, P.O. Box 9001, Big Sandy, TX 75755.

If the post office alerts us that your magazine is undeliverable, we have no further obligation unless we receive a corrected address within two years.

L'Astrée Scarf

Design by Carrie Carpenter

SKILL LEVEL

■ ■ ■ ■ BEGINNER

FINISHED SIZE

4 x 58 inches, excluding Fringe

MATERIALS

- NaturallyCaron.com Country medium (worsted) weight acrylic/wool yarn (3 oz/185 yds/85g per ball):
 - 2 balls #0004 green sheen
- Size H/8/5mm crochet hook or size needed to obtain gauge
- 6mm gold glass beads: 64 assorted shapes
- Yarn needle
- Large-eye beading needle (optional)



GAUGE

13 dc = 4 inches; 4 rows = 4 inches

PATTERN NOTE

Chain-3 at beginning of row counts as first double crochet unless otherwise stated.

SCARF

Row 1: Ch 14, sc in 2nd ch from hook, *ch 3, sk next 2 chs, sc in next ch, rep from * across, turn. (5 sc, 4 ch-3 sps)

Row 2: Ch 3 (see Pattern Note), dc in first sc, *sc in next ch-3 sp, 3 dc in next sc, rep from * across to last sc, 2 dc in last sc, turn. (13 dc, 4 sc)

Continued on page 57



Stitched in a shade of celadon (named a hero in French romantic literature), this light, lacy scarf is perfect for spring.

Pansy Tea Light

Design by Royann Hanson

Fast, Easy, Fun!

SKILL LEVEL

■ ■ ■ ■ ■ INTERMEDIATE

FINISHED SIZE

2½ inches in diameter

MATERIALS

- Aunt Lydia's Classic Crochet size 10 crochet cotton (white: 400 yds per ball; solid: 350 yds per ball; shaded: 300 yds per ball):
 - 22 yds #484 myrtle green
 - 9 yds #1 white
 - 7 yds #26 shaded purples
- Size 5/1.90mm steel crochet hook or size needed to obtain gauge
- Fabric glue
- White battery-operated tea light



GAUGE

3 dc rnds = 1 inch; 1 tr row = ½ inch

PATTERN NOTES

Weave in loose ends.

Chain-3 at beginning of round counts as first double crochet unless otherwise stated.

Chain-4 at beginning of round counts as first treble crochet unless otherwise stated.

Join rounds with slip stitch as indicated unless otherwise stated.

Each flower is made separately.

SPECIAL STITCHES

Beginning shell (beg shell):

Ch 3, (2 dc, ch 3, 3 dc) in indicated st or sp.

Shell: (3 dc, ch 3, 3 dc) in indicated st or sp.

Chain-2 picot (ch-2 picot):

Ch 2, sl st in top of indicated st.

Treble crochet fringe (tr fringe):

(Tr in indicated st or sp, {ch 2, sl st in top of tr just made}) 6 times.



Decorate a luncheon or party table with a set of these darling little pansy lights for a pop of pretty flair!

COVER

9-POINT LEAF

Rnd 1: With myrtle green, ch 8, **join** (see *Pattern Notes*) in 8th ch from hook to form ring, **ch 3** (see *Pattern Notes*), 18 dc in ring, join in 3rd ch of beg ch-3. (19 dc)

Rnd 2: Beg shell (see *Special Stitches*) in same st as joining, [sk next dc, **shell** (see *Special Stitches*) in next dc] around, join in 3rd ch of beg ch-3. (9 shells)

Rnd 3: Sl st in next 2 dc and in next ch-3 sp, beg shell in same sp, shell in ch-3 sp of each shell around, join in 3rd ch of beg ch-3. (9 shells)

Rnd 4: Sl st in next 2 dc and in next ch-3 sp, **ch 4** (see *Pattern Notes*), (6 tr, **ch-2 picot** (see *Special Stitches*) in top of last tr made, 7 tr) in same sp as beg

ch-4 (*Point*), *sk next 3 dc, sc in next dc, sk next 2 dc, (7 tr, ch-2 picot in top of last tr made, 7 tr) in ch-3 sp of next shell (*Point*), rep from * around, join in 4th ch of beg ch-4. Fasten off. (9 *Points*)

FIRST PANSY

Center

With white, ch 8, join in 8th ch from hook to form ring, ch 3, 2 dc in ring, ch 8, (3 dc in ring, ch 8) 4 times, join in 3rd ch of beg ch-3. Fasten off. (15 dc, 5 ch-8 sps)

Petals

Join shaded purples in any ch-8 sp of Center, ch 3, 6 dc in same ch-8 sp as beg ch-3, sl st in ch-3 sp of any shell on rnd 3 of Leaf, ch 1, 7 dc in same sp as beg ch-3 (*petal*), sc in 2nd dc of next 3-dc

Continued on page 58

Evening Star

Design by Agnes Russell

SKILL LEVEL

■ ■ ■ ■ ■ INTERMEDIATE

FINISHED SIZES

Doily: 15½ inches in diameter

Accent doily: 9½ inches in diameter

MATERIALS

- Aunt Lydia's Classic Crochet size 10 crochet cotton (400 yds per ball):
1 ball #1 white
- Size 7/1.65mm steel crochet hook or size needed to obtain gauge



GAUGE

3 shell rnds = 1 inch

Beginning treble cluster

(beg tr cl): Ch 3, yo twice, insert hook in same sp as beg ch-3, yo, draw up lp, (yo, draw through 2 lps on hook) 3 times.

Double shell: ({2 dc, ch 3} twice, 2 dc) in indicated sp.

DOILY

Rnd 1: Ch 10, **join** (see *Pattern Notes*) to form a ring, **beg tr cl** (see *Special Stitches*) in ring, ch 3, [**tr cl** (see *Special Stitches*) in ring, ch 3] 15 times, join in beg tr cl. (16 tr cl, 16 ch-3 sps)

Rnd 2: Sl st in next ch-3 sp, ch 1, (sc, ch 3, sc) in same ch-3

sp, (sc, ch 3, sc) in each ch-3 sp around, join in beg sc. (32 sc, 16 ch-3 sps)

Rnd 3: Sl st in next ch-3 sp, ch 1, sc in same ch-3 sp, [ch 7, sc in next ch-3 sp] 15 times, ch 3, tr in beg sc to position hook in center of last ch-7 sp. (16 ch-7 sps, 16 sc)

Rnd 4: Beg shell (see *Special Stitches*) in same ch-7 sp, *ch 4, (sc, ch 3, sc) in next ch-7 sp, ch 4**, **shell** (see *Special Stitches*) in next ch-7 sp, rep from * around, ending last rep at **, join in 3rd ch of beg ch-3. (8 shells, 16 sc, 16 ch-4 sps, 8 ch-3 sps)

PATTERN NOTES

Weave in loose ends as work progresses.

Join with slip stitch as indicated unless otherwise stated.

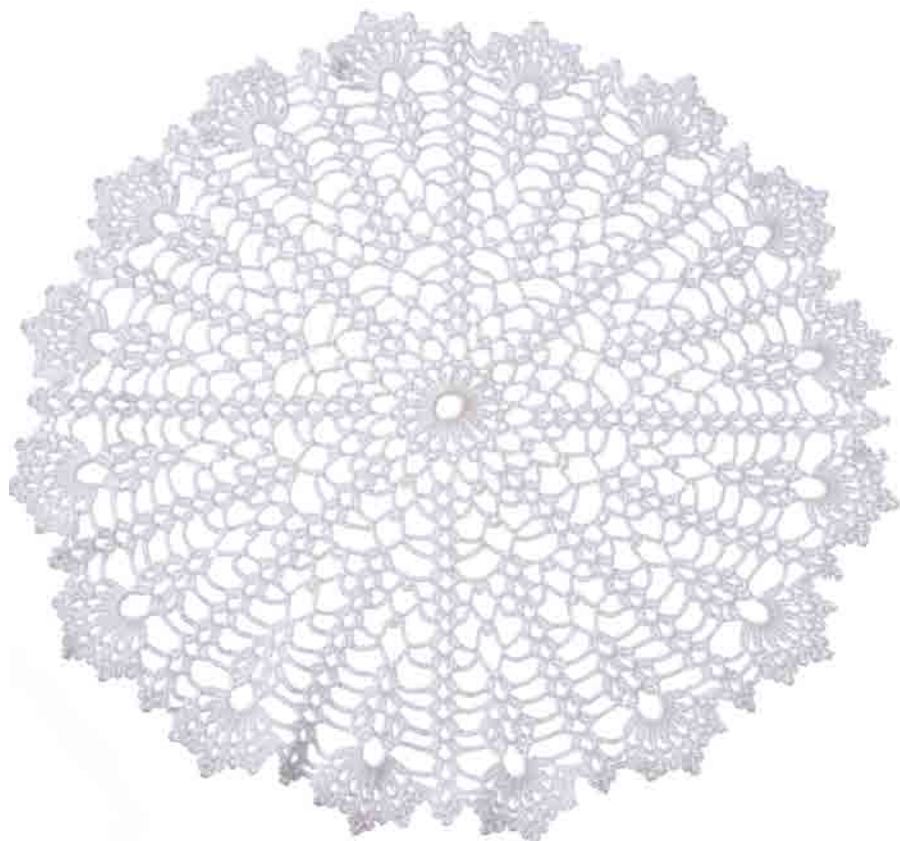
Chain-3 at beginning of round counts as first double crochet unless otherwise stated.

SPECIAL STITCHES

Shell: (2 dc, ch 3, 2 dc) in indicated st.

Beginning shell (beg shell): Sl st in next dc and in next ch sp, (**ch 3**—see *Pattern Notes*, dc, ch 3, 2 dc) in same ch sp.

Treble cluster (tr cl): *Yo twice, insert hook in indicated sp, yo, draw up lp, (yo, draw through 2 lps on hook) twice, rep from * once, yo, draw through all 3 lps on hook.



Rnd 5: Beg shell, *ch 4, sc in next ch-4 sp, ch 7, sc in next ch-4 sp, ch 4**, shell in ch-3 sp of next shell, rep from * around, ending last rep at **, join in 3rd ch of beg ch-3. (8 shells, 8 ch-7 sps, 16 ch-4 sps, 16 sc)

Rnd 6: Beg shell, *ch 6, (sc, ch 3, sc) in next ch-7 sp, ch 6**, shell in ch-3 sp of next shell, rep from * around, ending last rep at **, join in 3rd ch of beg ch-3. (8 shells, 16 ch-6 sps, 16 sc, 8 ch-3 sps)

Rnd 7: Beg shell, *ch 5, sc in next ch-6 sp, ch 7, sc in next ch-6 sp, ch 5**, shell in ch-3 sp of next shell, rep from * around, ending last rep at **, join in 3rd ch of beg ch-3. (8 shells, 16 ch-5 sps, 16 sc, 8 ch-7 sps)

Rnd 8: Beg shell, *ch 5, shell in 4th ch of next ch-7 sp, ch 5**, shell in ch-3 sp of next shell, rep from * around, ending last rep at **, join in 3rd ch of beg ch-3. (16 shells, 16 ch-5 sps)

Rnd 9: Beg shell, *ch 4, (sc, ch 3, sc) in next ch-5 sp, ch 4**, shell in ch-3 sp of next shell, rep from * around, ending last rep at **, join in 3rd ch of beg ch-3. (16 shells, 32 ch-4 sps, 16 ch-3 sps, 32 sc)

Rnd 10: Rep rnd 5. (16 shells, 16 ch-7 sps, 32 ch-4 sps, 32 sc)

Rnd 11: Rep rnd 6. (16 shells, 16 ch-3 sps, 32 ch-6 sps, 32 sc)

Rnd 12: Rep rnd 7. (16 shells, 32 ch-5 sps, 16 ch-7 sps, 32 sc)

Rnd 13: Rep rnd 8. (32 shells, 32 ch-5 sps)

Rnd 14: Beg shell in first shell, *ch 4, **double shell** (see *Special Stitches*) in ch-3 sp of next shell, ch 4**, shell in ch-3 sp of next shell, rep from * around, ending last rep at **, join in 3rd ch of beg ch-3. (16 shells, 16 double shells, 32 ch-4 sps)

Rnd 15: Beg shell, *ch 4, shell in ch-3 sp of next double shell, ch 2, shell in next ch-3 sp of

same double shell, ch 4**, shell in next ch-3 sp of next shell, rep from * around, ending last rep at **, join in 3rd ch of beg ch-3. (48 shells, 32 ch-4 sps, 16 ch-2 sps)

Rnd 16: Beg shell, *ch 4, sc in ch-3 sp of next shell, (2 dc, ch 8, 2 dc) in next ch-2 sp, sc in ch-3 sp of next shell, ch 4** shell in

ch-3 sp of next shell, rep from * around, ending last rep at **, join in 3rd ch of beg ch-3. (16 shells, 16 ch-8 sps, 64 dc, 32 ch-4 sps, 32 sc)

Rnd 17: Beg shell, *ch 4, ((tr cl, ch 3) 7 times, tr cl) in next ch-8 sp, ch 4**, shell in ch-3 sp of next shell, rep from * around,

Continued on page 60



Two different sizes give this stunning doily multiple options for display or use.

Patchwork Puppy

Design by Sheila Leslie

SKILL LEVEL

■ ■ ■ ■ EASY

FINISHED SIZE

9 inches tall x 9½ inches long

MATERIALS

- Red Heart Super Saver medium (worsted) weight acrylic yarn (7 oz/364 yds/198g per skein):
1 oz/50 yds/28g each #324 bright yellow and #722 pretty 'n pink
¾ oz/38 yds/21g #356 amethyst
½ oz/25 yds/14g each #668 honeydew, #512 turqua, #254 pumpkin, #672 spring green, #886 blue
1 yd #312 black
- Size H/8/5mm crochet hook or size needed to obtain gauge
- Stitch marker
- Fiberfill
- Tapestry needle

GAUGE

4 sc = 1 inch

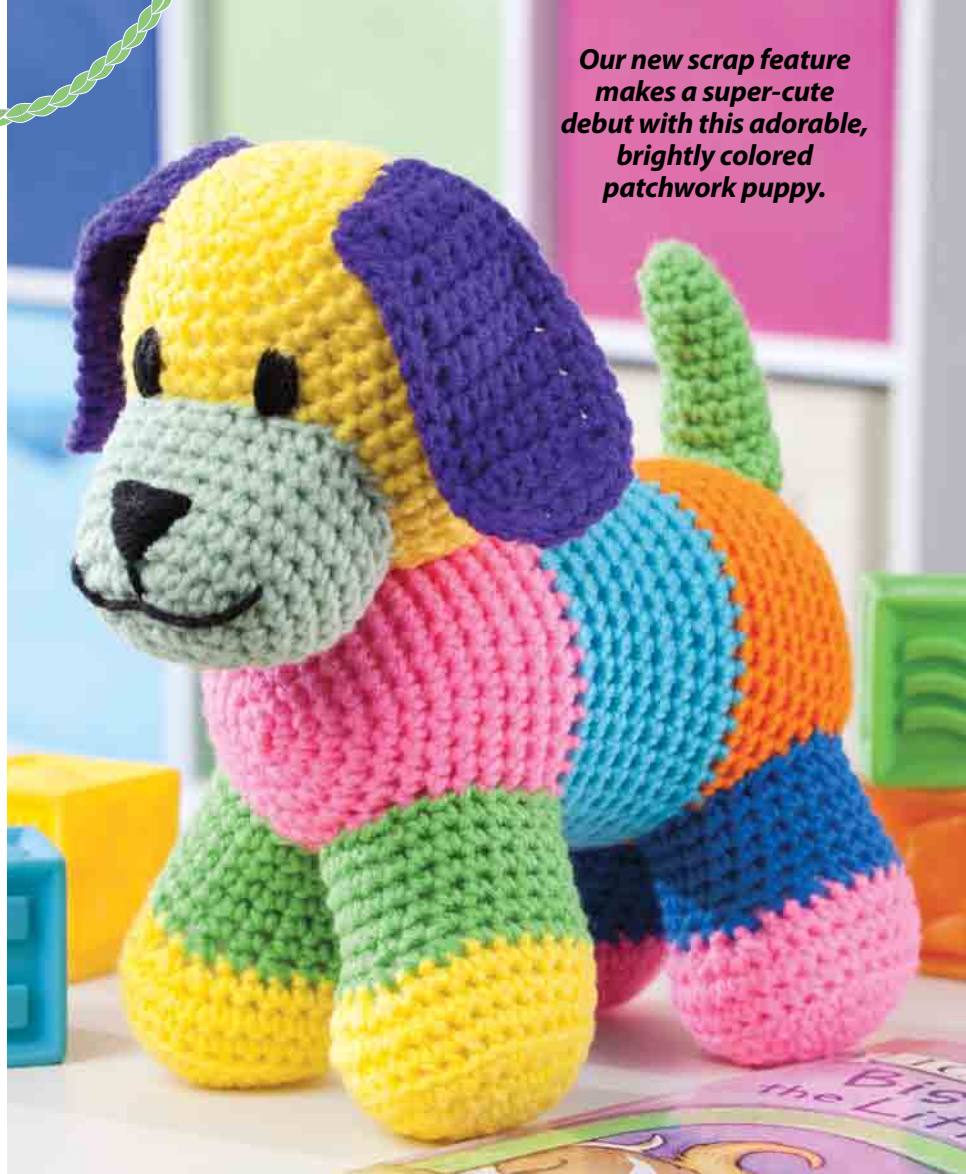
PATTERN NOTES

Do not join rounds unless otherwise stated. Mark first stitch of each round.

PUPPY

HEAD

Rnd 1: Starting at top of Head with bright yellow, ch 2, 6 sc in 2nd ch from hook, **do not join** (see *Pattern Notes*).



Our new scrap feature makes a super-cute debut with this adorable, brightly colored patchwork puppy.

Rnd 2: 2 sc in each st around. (12 sc)

Rnd 3: *Sc in next st, 2 sc in next st, rep from * around. (18 sc)

Rnd 4: *Sc in each of next 2 sts, 2 sc in next st, rep from * around. (24 sc)

Rnd 5: *2 sc in next st, sc in each of next 3 sts, rep from * around. (30 sc)

Rnd 6: Sc in each st around.

Rnd 7: *Sc in each of next 4 sts, 2 sc in next st, rep from * around. (36 sc)

Rnd 8: *Sc in each of next 8 sts, 2 sc in next st, rep from * around. (40 sc)

Rnds 9–16: Sc in each st around.

Rnd 17: *Sc in each of next 8 sts, **sc dec** (see *Stitch Guide*) in next 2 sc, rep from * around. (36 sts)

Rnd 18: *Sc in each of next 4 sts, sc dec in next 2 sc, rep from * around. (30 sts)
Stuff Head with fiberfill.

Rnd 19: *Sc in each of next 3 sts, sc dec in next 2 sc, rep from * around. (24 sts)

Rnd 20: *Sc in each of next 2 sts, sc dec in next 2 sc, rep from * around. (18 sts)

Rnd 21: *Sc in next st, sc dec in next 2 sc, rep from * around. Leaving 14-inch length, fasten off. (12 sts)

Finish stuffing Head with fiberfill.

MUZZLE

Rnd 1: With honeydew, ch 5, 3 sc in 2nd ch from hook, sc in each of next 3 chs, working on opposite side of foundation ch, 3 sc in next ch, sc in each of next 3 chs, **do not join**. (12 sts)

Rnd 2: *Sc in next st, 2 sc in next st, rep from * around. (18 sts)

Rnd 3: *Sc in each of next 2 sts, 2 sc in next st, rep from * around. (24 sts)

Rnd 4: *Sc in each of next 3 sts, 2 sc in next st, rep from * around. (30 sts)

Rnds 5–9: Sc in each st around. Leaving 16-inch length, fasten off at end of rnd 9.

Stuff Muzzle. Sew to lower part of Head using 16-inch length of honeydew.

EAR

Make 2.

Row 1: With amethyst, ch 6, sc in 2nd ch from hook, sc in each of next 4 chs, turn. (5 sts)

Rows 2–4: Ch 1, sc in each st across, turn.

Row 5: Ch 1, 2 sc in first st, sc in each of next 3 sts, 2 sc in last st, turn. (7 sts)

Rows 6–14: Ch 1, sc in each st across, turn.

Row 15: Ch 1, sc dec in next 2 sc, sc in each of next 3 sts, sc dec in next 2 sc, turn. (5 sts)

Row 16: Ch 1, sc dec in next 2 sc, sc in next st, sc dec in next 2 sc. Fasten off. (3 sts)

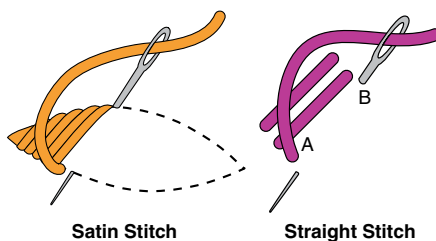
Ear Edging

Working in ends of rows, join amethyst with a sc in end of row 1, sc in end of each row across to row 16, working across row 16, 2 sc in next st, sc in next st, 2 sc in next st, work 16 sc across other side of Ear. Leaving 12-inch length, fasten off.

Sew Ears to Head.

FACIAL FEATURES

With black, use **satin stitch** (see illustration) to embroider eyes above Muzzle and a triangle-shaped nose on Muzzle, use **straight stitch** (see illustration) to embroider nose line and mouth on Muzzle.



BODY

Rnds 1 & 2: Starting at front with pretty 'n pink, rep rnds 1 and 2 for Head. (12 sts at end of rnd 2)

Rnd 3: *2 sc in each of next 3 sts, sc in each of next 3 sts, rep from * around. (18 sts)

Rnd 4: *[Sc in next st, 2 sc in next st] 3 times, sc in each of next 3 sts, rep from * around. (24 sts)

Rnd 5: *Sc in each of next 3 sts, 2 sc in next st, rep from * around. (30 sts)

Rnd 6: *Sc in each of next 4 sts, 2 sc in next st, rep from * around. (36 sts)

Rnd 7: Sc in each st around.

Rnd 8: *Sc in each of next 5 sts, 2 sc in next st, rep from * around. (42 sts)

Rnds 9–13: Sc in each st around. At end of rnd 13, fasten off.

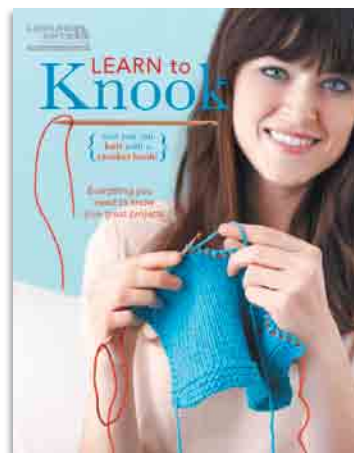
Rnd 14: Join turqua with sc in last st of rnd 13, sc in each rem st around.

Rnds 15–21: Sc in each st around. At end of rnd 21, fasten off.

Rnd 22: Join pumpkin with sc in last st of rnd 21, sc in each rem st around.

LEARN to Knook™

{ now you can knit with a crochet hook! }



EVERYTHING you need to know about how to Knook. PLUS great projects!



5585 • \$9.95



5777 • \$9.95



5779 • \$9.95



5780 • \$9.95



5781 • \$9.95

Also, look for these Made with the Knook PATTERN BOOKS!

Watch **EXCLUSIVE** how-to Knook videos and get **FREE** patterns at www.leisurearts.com/how-to-knook

LEISURE ARTS
the art of everyday living



See your favorite retailer, call 1-800-526-5111 or visit www.leisurearts.com

Continued on page 61

Orchid Lace Top

Design by Brenda Bourg

SKILL LEVEL

■ ■ ■ ■ EASY

FINISHED SIZES

Instructions given fit 32–34-inch bust (*small*); changes for 36–38-inch bust (*medium*), 40–42-inch bust (*large*), 44–46-inch bust (*X-large*), 48–50-inch bust (*2X-large*) and 52–54-inch bust (*3X-large*) are in [].

FINISHED GARMENT MEASUREMENTS

Bust: 36 inches (*small*) [40 inches (*medium*), 44 inches (*large*), 48 inches (*X-large*), 52 inches (*2X-large*), 56 inches (*3X-large*)]

MATERIALS

- Patons Grace light (light worsted) weight cotton yarn (1¾ oz/136 yds/50g per ball):
9 [9, 10, 11, 12, 13] balls #62322 viola
- Size F/5/3.75mm crochet hook or size needed to obtain gauge
- Tapestry needle



GAUGE

9 sts = 2 inches; rows 1–6 = 2 inches

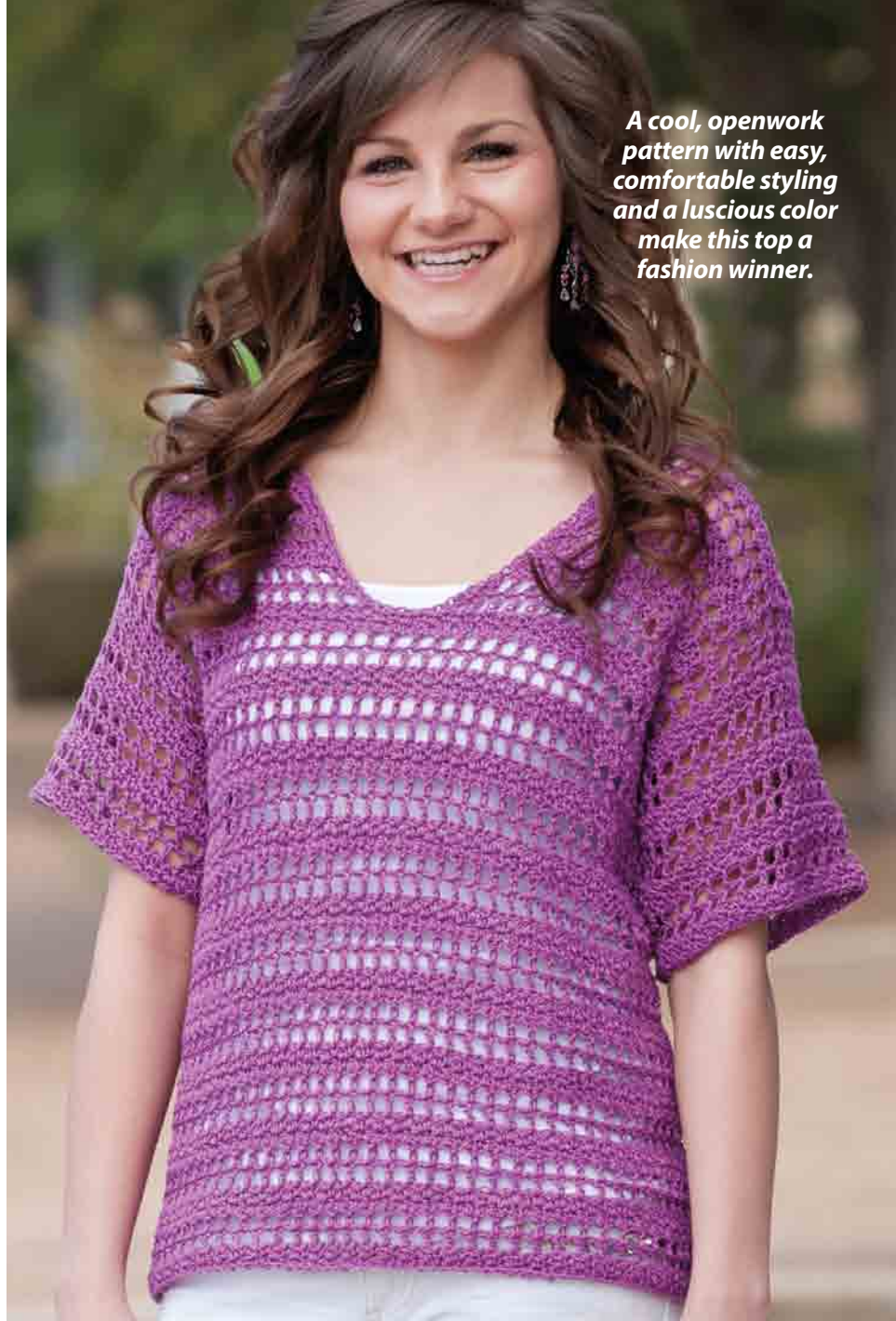
PATTERN NOTES

Weave in loose ends as work progresses.

Join with slip stitch as indicated unless otherwise stated.

Chain-3 at beginning of row or round counts as first double crochet unless otherwise stated.

Chain-4 at beginning of row or round counts as first double crochet and chain-1 unless otherwise stated.



A cool, openwork pattern with easy, comfortable styling and a luscious color make this top a fashion winner.

LACE TOP

BACK

Row 1 (RS): Beg at bottom edge, ch 70 [78, 86, 94, 102, 110], sc in 2nd ch from hook, [dc in next ch, sc in next ch] across, turn. (69 [77, 85, 93, 101, 109] sts)

Row 2: Ch 1, [dc in each sc, sc in each dc] across, turn.

Row 3: Ch 4 (see *Pattern Notes*), sk next st, dc in next st, [ch 1, sk next st, dc in next st] across,

turn. (35 [39, 43, 47, 51, 55] dc, 34 [38, 42, 46, 50, 54] ch-1 sps)

Row 4: Ch 4, sk next ch-1 sp, dc in next dc, [ch 1, sk next ch-1 sp, dc in next dc] across, turn.

Row 5: Working in dc sts and ch-1 sps, **ch 3** (see *Pattern Notes*), [sc in next st, dc in next st] across, turn. (69 [77, 85, 93, 101, 109] sts)

Rows 6–33: [Rep rows 2–5 consecutively] 7 times.

Row 34: Rep row 2.

Underarm Shaping

Row 35: Ch 4, sk next st, dc in next st, [ch 1, sk next st, dc in next st] across to last 4 [6, 8, 10, 12, 14] sts, leaving rem sts unworked, turn. (65 [71, 77, 83, 89, 95] sts)

Row 36: Ch 4, sk next st, dc in next st, [ch 1, sk next st, dc in next st] across to last 4 [6, 8, 10, 12, 14] sts, leaving rem sts unworked, turn. (61 [65, 69, 73, 77, 81] sts)

Row 37: Rep row 5. (61 [65, 69, 73, 77, 81] sts)

Row 38: Rep row 2.

Row 39: Rep row 3.

Row 40: Rep row 4.

Rows 41–52: [Rep rows 37–40 consecutively] 3 times.

Rows 53 & 54: Rep rows 37 and 38. At the end of row 54, fasten off.

FRONT

Rows 1–38: Rep rows 1–38 of Back. (61 [65, 69, 73, 77, 81] sts)

First Neck Shaping

Row 39 (RS): Ch 4, sk next st, dc in next st, [ch 1, sk next st, dc in next st] 12 [13, 14, 15, 16, 17] times, leaving rem sts unworked, turn. (27 [29, 31, 33, 35, 37] sts)

Row 40: Ch 4, sk next ch-1 sp, dc in next dc, [ch 1, sk next ch-1 sp, dc in next dc] across, turn.

Row 41: Ch 3, [sc in next st, dc in next st] across to last 2 sts, leaving rem sts unworked, turn. (25 [27, 29, 31, 33, 35] sts)

Row 42: Ch 1, [dc in each sc, sc in each dc] across, turn.

Row 43: Ch 4, sk next ch-1 sp, dc in next dc, [ch 1, sk next ch-1 sp, dc in next dc] across, turn.

Row 44: Ch 4, sk next ch-1 sp, dc in next dc, [ch 1, sk next ch-1 sp, dc in next dc] across, turn.

Row 45: Rep row 41. (23 [25, 27, 29, 31, 33] sts)

Row 46: Rep row 42.

Row 47: Rep row 43.

Row 48: Rep row 44.

Row 49: Rep row 41. (21 [23, 25, 27, 29, 31] sts)

Row 50: Rep row 42.

Row 51: Rep row 43.

Row 52: Rep row 44.

Row 53: Rep row 41. (19 [21, 23, 25, 27, 29] sts)

Row 54: Rep row 42. Fasten off.

2nd Neck Shaping

Row 39: With RS facing, sk next 7 sts at center front, **join** (see *Pattern Notes*) in 8th st, ch 4, sk next st, dc in next st, [ch 1, sk next st, dc in next st] 12 [13, 14, 15, 16, 17] times, turn. (27 [29, 31, 33, 35, 37] sts)

Row 40: Ch 4, sk next ch-1 sp, dc in next dc, [ch 1, sk next ch-1 sp, dc in next dc] across, turn.

Row 41: Ch 3, [sc in next st, dc in next st] across to last 2 sts, leaving rem sts unworked, turn.

Row 42: Ch 1, [dc in each sc, sc in each dc] across to last 2 sts, leaving rem sts unworked, turn. (25 [27, 29, 31, 33, 35] sts)

Row 43: Ch 4, sk next ch-1 sp, dc in next dc, [ch 1, sk next ch-1 sp, dc in next dc] across, turn.

Row 44: Ch 4, sk next ch-1 sp, dc in next dc, [ch 1, sk next ch-1 sp, dc in next dc] across, turn.

Row 45: Rep row 41.

Row 46: Rep row 42. (23 [25, 27, 29, 31, 33] sts)

Row 47: Rep row 43.

Row 48: Rep row 44.

Row 49: Rep row 41.

Row 50: Rep row 42. (21 [23, 25, 27, 29, 31] sts)

Row 51: Rep row 43.

Row 52: Rep row 44.

Row 53: Rep row 41.

Continued on page 63

the Knook™

{ now you can
knit with a
crochet hook! }



NEW

Expanded Beginner Set

- For **LIGHT**, **MEDIUM**, and **BULKY** weight yarns.
- Learning to knit is **EASY** with the Knook and our step-by-step right and left-handed instructions.
- The **SPECIALIZED** bamboo crochet hook & cord replaces traditional knitting needles!
- No more dropped stitches—**KNOOK & CORD** keep them secure!

Watch **EXCLUSIVE** how-to Knook videos and get **FREE** patterns at www.leisurearts.com/how-to-knook

LEISURE ARTS
the art of everyday living



See your favorite retailer,
call 1-800-526-5111 or
visit www.leisurearts.com

Starflower Table Topper

Design by Jean Fritts

SKILL LEVEL

■ ■ ■ ■ ■ INTERMEDIATE

FINISHED SIZE

24 inches in diameter

MATERIALS

- Aunt Lydia's Fine Crochet size 20 crochet cotton (400 yds per ball):
2 balls #226 natural
- Size 6/1.80mm steel crochet hook or size needed to obtain gauge

GAUGE

Rnds 1–8 = 3¼ inches; 4 dc rnds = 1 inch

PATTERN NOTES

Weave in loose ends as work progresses.

Join with slip stitch as indicated unless otherwise stated.

Chain-3 at beginning of round counts as first double crochet unless otherwise stated.

Chain-4 at beginning of round counts as first treble crochet unless otherwise stated.

Chain-5 at beginning of round counts as first double crochet and chain-2 unless otherwise stated.

Chain-6 at beginning of round counts as first treble crochet and chain-2 unless otherwise stated.

Chain-9 at beginning of round counts as first treble crochet and chain-5 unless otherwise stated.

SPECIAL STITCHES

Picot: Ch 5, sl st in top of last sc made.

4 treble crochet cluster

(4-tr cl): *Yo twice, insert hook in indicated st, yo, draw up lp, (yo, draw through 2 lps on hook) twice, rep from * 3 more times, yo, draw through all 5 lps on hook.

3 treble crochet cluster

(3-tr cl): *Yo twice, insert hook in indicated st, yo, draw up lp, (yo, draw through 2 lps on hook) twice, rep from * twice, yo, draw through all 4 lps on hook.

Shell: (2 tr, ch 2, 2 tr) in indicated sp.

DOILY

Rnd 1: Ch 12, **join** (see *Pattern Notes*) in first ch to form a ring, ch 1, 24 sc in ring, join in beg sc. (24 sc)

Rnd 2: Ch 5 (see *Pattern Notes*), sk next sc, [dc in next sc, ch 2, sk next sc] around, join in 3rd ch of beg ch-5. (12 dc, 12 ch-2 sps)

Rnd 3: Ch 1, sc in same st as beg ch-1, [ch 5, sc in next dc] around, ending with ch 3, dc in beg sc to position hook in center of last ch sp. (12 sc, 12 ch-5 sps)

Rnd 4: Ch 1, sc in joining, [ch 7, sc in 3rd ch of ch-5 sp] around, ending with ch 3, tr in beg sc. (12 sc, 12 ch-7 sps)

Rnd 5: Ch 1, sc in joining, [ch 7, sc in 4th ch of ch-7 sp] around,

ending with ch 3, tr in beg sc. (12 sc, 12 ch-7 sps)

Rnd 6: Ch 1, sc in joining, ch 7, [sc in 4th ch of ch-7 sp, ch 7] around, join in beg sc. (12 sc, 12 ch-7 sps)

Rnd 7: Ch 4 (see *Pattern Notes*), tr in each of next 7 chs, [tr in next sc, tr in each of next 7 chs] around, join in 4th ch of beg ch-4. (96 tr)

Rnd 8: Ch 4, tr in each tr around, join in 4th ch of beg ch-4.

Rnd 9: Ch 4, tr in same tr as beg ch-4, tr in each of next 7 tr, [2 tr in next tr, tr in each of next 7 tr] around, join in 4th ch of beg ch-4. (108 tr)

Rnd 10: Ch 4, tr in each of next 4 tr, 2 tr in next tr, [tr in each of next 8 tr, 2 tr in next tr] around to last 3 sts, tr in each of next 3 tr, join in 4th ch of beg ch-4. (120 tr)

Rnd 11: Ch 4, tr in same st as beg ch-4, tr in each of next 19 tr, [2 tr in next tr, tr in each of next 19 tr] around, join in 4th ch of beg ch-4. (126 tr)

Rnd 12: Ch 9 (see *Pattern Notes*), tr in each of next 2 sts, ch 2, *tr in each of next 17 sts, ch 2**, tr in each of next 2 sts, ch 5, tr in each of next 2 sts, ch 2, rep from * around, ending last rep at **, tr in next tr, join in 4th ch of beg ch-9. (6 ch-5 sps, 12 ch-2 sps, 126 tr)

Rnd 13: Ch 9, *sc in 3rd ch of next ch-5 sp, ch 5, tr in each of next 2 tr, ch 2, sk next ch-2 sp, sk next tr, tr in each of next 15 tr, ch 2, sk next tr, sk next ch-2 sp**, tr in each of next 2 tr, ch 5, rep from * around, ending last rep at **, tr in next tr, join in 4th ch of beg ch-9. (12 ch-5 sps, 12 ch-2 sps, 114 tr)

Rnd 14: Ch 9, [sc in 3rd ch of next ch-5 sp, ch 5] twice, tr in next 2 tr, ch 2, sk next ch-2 sp, sk next tr, tr in each of next 13 tr, ch 2, sk next tr, sk next ch-2 sp**, tr in each of next 2 tr, ch 5, rep from * around, ending last rep at **, tr in next tr, join in 4th ch of beg ch-9. (18 ch-5 sps, 12 ch-2 sps, 102 tr)

Rnd 15: Ch 9, [sc in 3rd ch of next ch-5 sp, ch 5] 3 times, *tr in each of next 2 tr, ch 2, sk next ch-2 sp, sk next tr, tr in next 11 tr, ch 2, sk next tr, sk next ch-2 sp**, tr in each of next 2 tr, [ch 5, sc in 3rd ch of next ch-5 sp] 3 times, ch 5, rep from * around, ending last rep at **, tr in next tr, join in 4th ch of beg ch-9. (24 ch-5 sps, 12 ch-2 sps, 90 tr)

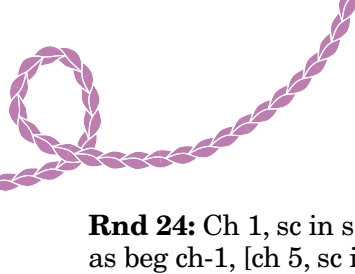
Rnd 16: Ch 9, [sc in 3rd ch of next ch-5 sp, ch 5] 4 times, *tr in each of next 2 tr, ch 2, sk next ch-2 sp, sk next tr, tr in next 9 tr, ch 2, sk next tr, sk next ch-2 sp**, tr in each of next 2 tr, [ch 5, sc in 3rd ch of next ch-5 sp] 4 times, ch 5, rep from * around, ending last rep at **, tr in next tr, join in 4th ch of beg ch-9. (30 ch-5 sps, 12 ch-2 sps, 78 tr)

Rnd 17: Ch 9, [sc in 3rd ch of next ch-5 sp, ch 5] 5 times, *tr in each of next 2 tr, ch 2, sk next ch-2 sp, sk next tr, tr in next 7 tr, ch 2, sk next tr, sk next ch-2 sp**, tr in each of next 2 tr, [ch 5, sc in 3rd ch of next ch-5 sp] 5 times, ch 5, rep from * around, ending last rep at **, tr in next tr, join in 4th ch of beg ch-9. (36 ch-5 sps, 12 ch-2 sps, 66 tr)

Rnd 18: Ch 9, [sc in 3rd ch of next ch-5 sp, ch 5] 6 times, *tr in each of next 2 tr, ch 2, sk next ch-2 sp, sk next tr, tr in next 5 tr, ch 2, sk next tr, sk next ch-2 sp**, tr in each of next 2 tr, [ch 5, sc in 3rd ch of next ch-5 sp] 6 times, ch 5, rep from * around, ending last rep at **, tr in next tr, join in 4th ch of beg ch-9. (42 ch-5 sps, 12 ch-2 sps, 54 tr)



Reminiscent of Grandmother's flower garden, this large doily showcases the elegant and beautiful starflower.



Rnd 19: Ch 9, [sc in 3rd ch of next ch-5 sp, ch 5] 7 times, *tr in each of next 2 tr, ch 2, sk next ch-2 sp, sk next tr, tr in next 3 tr, ch 2, sk next tr, sk next ch-2 sp**, tr in each of next 2 tr, [ch 5, sc in 3rd ch of next ch-5 sp] 7 times, ch 5, rep from * around, ending last rep at **, tr in next tr, join in 4th ch of beg ch-9. (48 ch-5 sps, 12 ch-2 sps, 42 tr)

Rnd 20: Ch 9, [sc in 3rd ch of next ch-5 sp, ch 5] 8 times, *tr in each of next 2 tr, ch 2, sk next ch-2 sp, sk next tr, tr in next tr, ch 2, sk next tr, sk next ch-2 sp**, tr in each of next 2 tr, [ch 5, sc in 3rd ch of next ch-5 sp] 8 times, ch 5, rep from * around, ending last rep at **, tr in next tr, join in 4th ch of beg ch-9. (54 ch-5 sps, 12 ch-2 sps, 30 tr)

Rnd 21: Ch 9, [sc in 3rd ch of next ch-5 sp, ch 5] 9 times, *tr in each of next 2 tr, sk next ch-2 sp, sk next tr, sk next ch-2 sp**, tr in each of next 2 tr, [ch 5, sc in 3rd ch of next ch-5 sp] 9 times, ch 5, rep from * around, ending last rep at **, tr in next tr, join in 4th ch of beg ch-9. (60 ch-5 sps, 30 tr)

Rnd 22: Ch 9, [sc in 3rd ch of next ch-5 sp, ch 5] 10 times, *4-tr cl (see *Special Stitches*) in next 4 tr, [ch 5, sc in 3rd ch of next ch-5 sp] 10 times, ch 5, rep from * around, ending with 3-tr cl (see *Special Stitches*) over last 3 tr, join in 4th ch of beg ch-9. (66 ch-5 sps, 12 tr-cl)

Rnd 23: Ch 1, *sc in tr cl, [ch 5, sc in 3rd ch of next ch-5 sp] 11 times**, ch 5, rep from * around, ending last rep at **, ch 2, tr in beg sc. (72 ch-5 sps)

Rnd 24: Ch 1, sc in same ch sp as beg ch-1, [ch 5, sc in 3rd ch of next ch-5 sp] around, ending with ch 2, tr in beg sc.

Rnd 25: Rep rnd 24.

Rnd 26: Ch 1, sc in same ch sp as beg ch-1, ch 4, [sc in 3rd ch of next ch-5 sp, ch 4] around, join in beg sc. (72 ch-4 sps)

Rnd 27: Ch 3 (see *Pattern Notes*), 4 dc in same ch-4 sp, *[4 dc in each of next 2 ch-4 sps**, 5 dc in next ch-4 sp, rep from * around, ending last rep at **, join in 3rd ch of beg ch-3. (312 dc)

Rnd 28: Ch 3, dc in each dc around, join in 3rd ch of beg ch-3.

Rnd 29: Sl st in next dc, ch 9, *sk next dc, tr in each of next 2 dc, ch 2, sk next 2 dc, tr in each of next 17 dc, ch 2, sk next 2 dc**, tr in each of next 2 dc, ch 5, rep from * around, ending last rep at **, tr in next dc, join in 4th ch of ch-9. (12 ch-5 sps, 24 ch-2 sps, 252 tr)

Rnd 30: Rep rnd 13. (24 ch-5 sps, 24 ch-2 sps, 228 tr)

Rnd 31: Rep rnd 14. (36 ch-5 sps, 24 ch-2 sps, 180 tr)

Rnd 32: Rep rnd 15. (60 ch-5 sps, 24 ch-2 sps, 156 tr)

Rnd 33: Rep rnd 16. (72 ch-5 sps, 24 ch-2 sps, 132 tr)

Rnd 34: Rep rnd 17. (84 ch-5 sps, 24 ch-2 sps, 108 tr)

Rnd 35: Rep rnd 18. (96 ch-5 sps, 24 ch-2 sps, 84 tr)

Rnd 36: Rep rnd 19. (108 ch-5 sps, 24 ch-2 sps, 60 tr)

Rnd 37: Rep rnd 20. (120 ch-5 sps, 24 ch-2 sps, 48 tr)

Rnd 38: Rep rnd 21. (132 ch-5 sps, 24 ch-2 sps, 12 tr)

Rnd 39: Rep rnd 22. (144 ch-5 sps)

Rnd 40: Rep rnd 23. (144 ch-5 sps)

Rnd 41: Rep rnd 24. (144 ch-5 sps)

Rnd 42: Rep rnd 25. (144 ch-5 sps)

Rnd 43: Rep rnd 26. (144 ch-5 sps)

Rnd 44: Rep rnd 27. (624 tr)

Rnd 45: Rep rnd 28. (624 dc)

Rnd 46: Sl st in next dc, **ch 6** (see *Pattern Notes*), *sk next st, tr in each of next 2 sts, ch 2, sk next 2 sts, tr in each of next 17 sts, ch 2, sk next 2 sts**, tr in each of next 2 sts, ch 2, rep from * around, ending last rep at **, tr in last st, join in 4th ch of beg ch-6. (504 tr)

Rnd 47: Ch 6, *shell (see *Special Stitches*) in next ch-2 sp, ch 2, tr in each of next 2 tr, ch 2, sk next ch-2 sp, sk next tr, tr in each of next 15 tr, ch 2, sk next tr, sk next ch-2 sp**, tr in each of next 2 sts, ch 2, rep from * around, ending last rep at **, tr in next tr, join in 4th ch of beg ch-6. (552 tr)

Rnd 48: Ch 6, *sk next ch-2 sp, tr in each of next 2 sts, ch 2, shell in next ch-2 sp, ch 2, tr in each of next 2 tr, ch 2, sk next ch-2 sp, tr in each of next 2 tr, ch 2, sk next ch-2 sp, sk next tr, tr in each of next 13 tr, ch 2, sk next tr, sk next ch-2 sp**, tr in each of next 2 tr, ch 2, rep from * around, ending last rep at **, tr in next tr, join in 4th ch of beg ch-6. (600 tr)

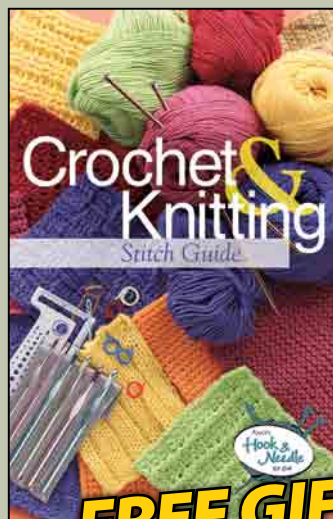
Rnd 49: Ch 6, [sk next ch-2 sp, tr in each of next 2 tr, ch 2] 5 times, *sk next ch-2 sp, sk next tr, tr in each of next 11 tr, ch 2, sk next tr**, [sk next ch-2 sp, tr in each of next 2 tr, ch 2] 6 times, rep from * around, ending last rep at **, sk next ch-2 sp, tr in next tr, join in 4th ch of beg ch-6. (552 tr)

Continued on page 60

Discover a Kit-of-the-Month Club for CROCHETERS and KNITTERS!



Get more than *HALF-OFF* introductory savings plus get a **FREE GIFT!**



FREE GIFT!

It's like getting
2 kits in one!

You get to choose whether to crochet or knit each kit!

- All the quality yarn and **TWO** easy sets of instructions (one in crochet and one in knitting) for every project are delivered right to your door!
- Now, there are **TWO** fast, fun and easy ways to indulge your passion for yarn!
- Get a handy Crochet & Knitting Stitch Guide as a **FREE GIFT** with your first shipment!

**Quality
yarn included in
each kit!**



To find out more, visit: KitClubSavings.com

Crazy for Cupcakes

Design by Debra Arch

SKILL LEVEL

■ ■ ■ ■ EASY

FINISHED SIZE

7¾ inches x 9 inches

MATERIALS

- Lily Sugar'n Cream medium (worsted) weight cotton yarn (solid: 2½ oz/120 yds/70g per ball):

Chocolate Cupcake:

2 oz/96 yds/57g each
#01130 warm brown
and #01004 soft ecru
6 yds each #00095 red,
#01740 hot pink and
#00046 rose pink

Striped Cupcake:

2 oz/96 yds/57g #01742
hot blue
1 oz/48 yds/28g each #01712
hot green and #00001 white

- Size G/6/4mm crochet hook or size needed to obtain gauge
- Tapestry needle
- Stitch marker or large safety pin

GAUGE

With 2 strands held tog: 3 sc = 1 inch; 3 sc rows = 1 inch

PATTERN NOTES

Weave in loose ends as work progresses.

Join with slip stitch as indicated unless otherwise stated.

Chain-2 at beginning of row counts as first half double crochet unless otherwise stated.

CHOCOLATE CUPCAKE

CAKE

Note: Work with 2 strands held tog unless otherwise stated.

Row 1: With 2 strands warm brown held tog (see Note), ch 19, sc in 2nd ch from hook and in each of next 10 chs, hdc in each of next 6 chs, 2 hdc in last ch, turn. (19 sts)

Row 2: Ch 2 (see Pattern Notes), hdc in each of next 7 hdc, sc in each rem sc, turn. (19 sts)

Row 3: Ch 1, sc in each of next 11 sts, hdc in each hdc across to last hdc, 2 hdc in last hdc, turn. (20 sts)

Row 4: Ch 2, hdc in each of next 8 hdc, sc in each rem st across, turn. (20 sts)

Row 5: Rep row 3. (21 sts)

Row 6: Ch 2, hdc in each of next 9 hdc, sc in each rem st across, turn. (21 sts)

Row 7: Rep row 3. (22 sts)

Row 8: Ch 2, hdc in each of next 10 hdc, sc in each rem sc across, turn. (22 sts)

Row 9: Rep row 3. (23 sts)

Row 10: Ch 2, hdc in each of next 11 hdc, sc in each rem sc across, turn. (23 sts)

Row 11: Ch 1, sc in each of next 11 sc, hdc in each of next 12 hdc, turn. (23 sts)

Row 12: Ch 2, **hdc dec** (see *Stitch Guide*) in next 2 sts, hdc

in each of next 9 hdc, sc in each rem sc across, turn. (22 sts)

Row 13: Ch 1, sc in each of next 11 sc, hdc in each rem hdc across, turn. (22 sts)

Row 14: Ch 2, hdc dec in next 2 hdc, hdc in each of next 8 hdc, sc in each rem sc across, turn. (21 sts)

Row 15: Ch 1, sc in each of next 11 sc, hdc in each of next 10 hdc, turn. (21 sts)

Row 16: Ch 2, hdc dec in first 2 hdc, hdc in each of next 7 hdc, sc in each rem sc across, turn. (20 sts)

Row 17: Ch 1, sc in each of next 11 sc, hdc in each of next 9 hdc, turn. (20 sts)

Row 18: Ch 2, hdc dec in next 2 hdc, hdc in each of next 6 hdc, sc in each rem st across, turn. (19 sts)

Row 19: Ch 1, sc in each of next 11 sc, hdc in each of next 6 hdc, hdc dec in last 2 hdc. Fasten off warm brown. (18 sts)

FROSTING

Row 1: With 2 strands soft ecru held tog, ch 24, sc in each ch across, turn. (23 sc)

Row 2: Ch 1, 2 sc in first sc, sc in each sc across to last sc, 2 sc in last sc, turn. (25 sc)

Row 3: Ch 1, sc in each sc across, turn. (25 sc)



Row 4: Ch 1, 2 sc in first sc, sc in each sc across to last sc, 2 sc in last sc, turn. (27 sc)

Rows 5 & 6: Ch 1, sc in each sc across, turn. (27 sc)

Row 7: Ch 1, **sc dec** (see *Stitch Guide*) in first 2 sc, sc in each sc across to last 2 sc, sc dec in last 2 sc, turn. (25 sc)

Row 8: Ch 1, [sc dec in next 2 sc] twice, sc in each sc across to last 4 sc, [sc dec in next 2 sc] twice, turn. (21 sc)

Rows 9–11: Rep row 7. (15 sc at end of last row)

Rows 12 & 13: Rep row 8. (7 sc at end of last row)

Row 14: Rep row 7. Fasten off soft ecru. (5 sc)

Scallop Bottom Edge

Row 1: Holding Frosting upside down, with 2 strands held tog, **join** (see *Pattern Notes*) soft ecru in rem lp of beg ch at right-hand corner of Frosting, ch 2, [sc in next ch, hdc in next ch, dc in next ch, hdc in next ch, sc in next ch, sl st in next ch] 3 times, sc in next ch, hdc in next ch, dc in next ch, (hdc, sc) in last ch, place safety pin through lp on hook, or place lp on marker to hold, and drop lp from hook.

SPRINKLE

Make 3 each red, rose pink & hot pink & 2 warm brown.

Rnd 1: Using 1 strand and leaving 4-inch length, ch 2, 5 sc in 2nd ch from hook, join in top of first sc. Leaving 4-inch length, fasten off. (5 sc)

SPRINKLE ASSEMBLY

Knot beg and end lengths tog on WS of Sprinkle. Arrange Sprinkles on top of Cupcake as desired. Weave lengths from each Sprinkle through Frosting and knot on WS of Frosting to secure.

These fun pot holders can also be used as oven mitts by sliding your hands underneath the frosting!



CUPCAKE ASSEMBLY

Holding top edge of Frosting even with top edge of RS of Cupcake, remove safety pin or marker from last st of Scallop Edge, place lp on hook, sl st in

14th st of row 19 of Cupcake, working through both thicknesses, work approximately 44 sc around top edge, join with sl st in beg ch-2 of Scallop Bottom Edge. Fasten off.

Continued on page 61

Spirals Rug

Design by AEvalina Gwynne

SKILL LEVEL

■ ■ ■ ■ ■ EASY

FINISHED SIZE

44 inches in diameter

MATERIALS

- Red Heart Super Saver medium (worsted) weight acrylic yarn (7 oz/364 yds/198g per skein):
1 skein each #530 orchid and #322 pale yellow
5 oz #668 honeydew
4 oz each #312 black and #311 white
- Size I/9/5.5mm crochet hook or size needed to obtain gauge
- Yarn needle
- Stitch marker



GAUGE

5 sc = 1½ inches; 5 sc rnds = 1½ inches

PATTERN NOTES

Weave in loose ends as work progresses.

Do not join rounds unless otherwise stated. Use stitch marker to mark rounds.

RUG

1-COLOR HEXAGON

Make 9 each orchid & pale yellow & 6 honeydew.

Rnd 1: Ch 2, 6 sc in 2nd ch from hook, **do not join**, place **marker** (see *Pattern Notes*), move marker as work progresses. (6 sc)

Rnd 2: 2 sc in each sc around. (12 sc)

Rnd 3: [Sc in next sc, 2 sc in next sc] around. (18 sc)

Rnd 4: [Sc in each of next 2 sc, 2 sc in next sc] around. (24 sc)

Rnd 5: [Sc in each of next 3 sc, 2 sc in next sc] around. (30 sc)

Rnd 6: [Sc in each of next 4 sc, 2 sc in next sc] around. (36 sc)

Rnd 7: [Sc in each of next 5 sc, 2 sc in next sc] around. (42 sc)

Rnd 8: [Sc in each of next 6 sc, 2 sc in next sc] around. (48 sc)

Rnd 9: [Sc in each of next 7 sc, 2 sc in next sc] around. (54 sc)

Rnd 10: [Sc in each of next 8 sc, 2 sc in next sc] around. (60 sc)

Rnd 11: [Sc in each of next 9 sc, 2 sc in next sc] around. (66 sc)

Rnd 12: [Sc in each of next 10 sc, 2 sc in next sc] around. (72 sc)

Rnd 13: Ch 1, sc in each st around, sl st in next sc. Fasten off.

SPIRAL

Make 7.

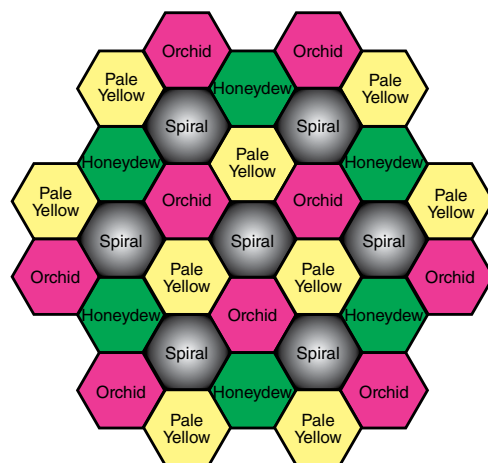
Rnd 1: With white, ch 2, 6 sc in 2nd ch from hook, **do not join**, drop white to WS, **do not fasten off**. (6 sc)

Rnd 2: Join black with sl st in first sc of previous rnd, work 2 sc in each sc around, drop black to WS, pick up dropped lp of white, do not fasten off black. (12 sc)

Rnds 3–12: Rep rnds 3–12 of 1-Color Hexagon, alternating rnds of white and black as in previous rnds. At the end of rnd 11, fasten off.

ASSEMBLY

Hexagons are joined by joining 12 sc to adjacent Hexagon. Following assembly diagram and starting with the center Spiral, place 1-Color Hexagon RS tog with Spiral, join matching yarn and working through both thicknesses, sl st in each of first 12 sc, pick up next 1-Color Hexagon next to Spiral center and sl st in each of next 12 sts. Continue joining 1-Color Hexagons and Spirals until all 31 Hexagons are joined tog. **cw**



Spirals Rug
Assembly Diagram

**Black and white
spirals create a
striking contrast
to the pretty
pastel motifs in
this refreshingly
different rug.**



Breath of Spring Coverlet

Design by Cindy Adams

SKILL LEVEL

■ ■ ■ ■ ■ INTERMEDIATE

FINISHED SIZES

Twin: 60½ x 88 inches, excluding Border

Full: 77 x 88 inches, excluding Border

Queen: 82½ x 93½ inches, excluding Border

King: 99 x 93½ inches, excluding Border

MATERIALS

- Bernat Satin medium (worsted) weight acrylic yarn (3½ oz/200 yds/100g per ball):

14 [17, 21, 25] balls
#04246 foliage

- Size H/8/5mm hook or size needed to obtain gauge



GAUGE

Motif = 5½ inches square

PATTERN NOTES

Join with slip stitch as indicated unless otherwise stated.

Chain-7 at beginning of round counts as first double crochet and chain-4 space unless otherwise stated.

SPECIAL STITCHES

Corner loop (corner lp): Ch 8, sl st in 3rd ch from hook, ch 2, sk next 2 chs, sl st in next ch of ch-8, ch 2.

Joining corner loop (joining corner lp): Ch 6, sl st in indicated corner lp of adjacent Motif, ch 2, sl st in 3rd ch of beg ch-6, ch 2, sk next 2 chs, sl st in next ch, ch 2.

Border corner loop (border corner lp): Ch 8, sl st in 4th ch from hook, ch 2, sk next ch, sl st in next ch of ch-8, ch 2, sk next 2 chs, sl st in same ch sp as beg ch-8.

COVERLET

FIRST MOTIF

Rnd 1: Ch 6, join in 6th ch from hook to form ring, **ch 5** (counts as first tr and ch-1 sp), (tr in ring, ch 1) 15 times, join in 4th ch of beg ch-5. (16 tr; 16 ch-1 sps)

Rnd 2: Ch 1, 2 sc in each ch-1 sp around, join in beg ch-1. (32 sc)

Rnd 3: Ch 7 (see Pattern Notes), sk next sc, [dc in each of next 2 sc, ch 4] twice, dc in each of next 2 sc, **corner lp** (see Special Stitches), *[dc in each of next 2 sc, ch 4] 3 times, dc in each of next 2 sc, corner lp, rep from * twice, dc in last sc, join in 3rd ch of beg ch-3. Fasten off.

1-SIDE JOIN MOTIF

Rnds 1 & 2: Rep rnds 1 and 2 of First Motif.



Rnd 3: Ch 7, sk next sc, [dc in each of next 2 sc, ch 4] twice, dc in each of next 2 sc, corner lp, [dc in each of next 2 sc, ch 4] 3 times, dc in each of next 2 sc, **joining corner lp** (see *Special Stitches*) in next corner lp, *dc in each of next 2 sc, ch 2, sl st in next ch-4 sp on adjacent Motif, ch 1, rep from * across to next corner, joining corner lp in next corner, [dc in each of next 2 sc, ch 4] 3 times, dc in each of next 2 sc, corner lp, dc in last sc, join in 3rd ch of beg ch-3. Fasten off.

2-SIDE JOIN MOTIF

Rnds 1 & 2: Rep rnds 1 and 2 of First Motif.

Rnd 3: Ch 7, sk next sc, [dc in each of next 2 sc, ch 4] twice, dc in each of next 2 sc, corner lp, [dc in each of next 2 sc, ch 4] 3 times, dc in each of next 2 sc, joining corner lp in next corner lp, *[dc in each of next 2 sc, ch 2, sl st in next ch-4 sp on adjacent Motif, ch 1] across to next corner, joining corner lp in next corner, rep from * once, dc in last sc, join in 3rd ch of beg ch-3. Fasten off.

NEXT MOTIFS

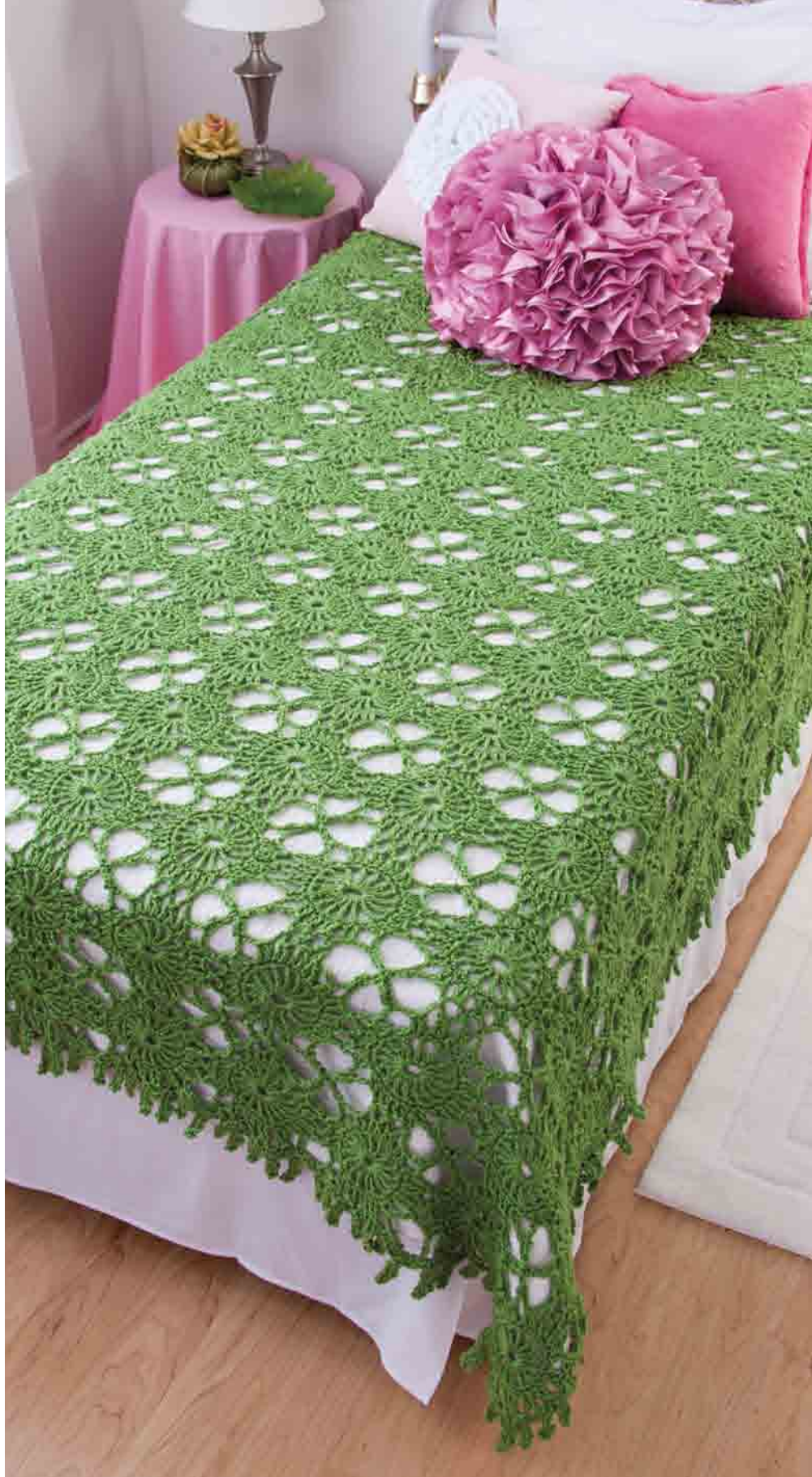
Rep 1-Side Join Motif and 2-Side Join Motif as shown in diagram for desired size.

COVERLET BORDER

Note: Border is worked on both long sides and 1 short end.

Join yarn in corner lp on long side, work **border corner lp** (see *Special Stitches*), *[ch 4, sl st in next ch-4 sp, border corner lp] 3 times, ch 4, sl st in base of next Motif corner lp, work border corner lp, ch 4, sl st in joining of motif corner lps, border corner lp, ch 4, sl st in base of Motif corner lp, work border corner lp, rep from * across current side, across next short end and across opposite long side. **CW**

Diagrams on page 62



This vibrant green coverlet, made in easy, join-as-you-go motifs, adds a bright, beautiful look to a white bedspread.

Tapestry Woven Throw

Design by Yana Muradian

SKILL LEVEL

■ ■ ■ ■ EASY

FINISHED SIZE

62 x 70 inches

MATERIALS

- Caron Simply Soft medium (worsted) weight acrylic yarn (solid: 6 oz/315 yds/170g; ombré: 4 oz/208 yds/114g per skein):
 - 4 skeins each #9719 soft pink and #0005 blackberry
 - 2 skeins each #9722 plum wine, #9756 lavender blue and #9801 baby brights
- Sizes G/6/4mm and H/8/5mm crochet hooks or size needed to obtain gauge
- Tapestry needle



GAUGE

Size H hook: [Dc in next dc, ch 1]
8 times = 4 inches; 6 dc rows = 3 inches

PATTERN NOTES

Weave in loose ends as work progresses.

Join with slip stitch as indicated unless otherwise stated.

Chain-4 at beginning of row counts as first double crochet and chain-1 unless otherwise stated.

Chain-3 at beginning of round counts as first double crochet unless otherwise stated.



A colorful mix of soft pastels worked in a woven filet pattern creates the fresh spring look of this pretty throw.

To change color, work last double crochet to last 2 loops, yarn over with new color and draw through last 2 loops on hook. Fasten off old color.

SPECIAL STITCH

Double crochet cross-stitch (dc cross-st): Sk next st, dc in next st, dc in sk st.

THROW

MESH

Row 1: With size H hook and baby brights, ch 198, dc in 6th ch from hook (*beg 5 sk chs count as sk 1 ch, dc and ch-1*), [ch 1, sk next ch, dc in next ch] across, turn. (98 dc, 97 ch-1 sps)

Row 2: Ch 4 (*see Pattern Notes*), dc in next dc, [ch 1, sk next ch-1 sp, dc in next dc] across, turn. Fasten off.

Row 3: With soft pink, ch 4, dc in next dc, [ch 1, sk next ch-1 sp, dc in next dc] across, turn.

Rows 4 & 5: Rep row 3. At end of last row, fasten off.

Rows 6–8: With plum wine, rep rows 3–5.

Rows 9–11: With lavender blue, rep rows 3–5.

Rows 12–14: With blackberry, rep rows 3–5.

Row 15: With baby brights, rep row 3.

Row 16: Rep row 2.

Rows 17–114: [Rep rows 3–16 consecutively] 7 times. At the end of row 114, fasten off.

WEAVING CHAINS

Leave an approximately 6-inch length at beg and end of each ch.

With size G hook, make 8 chs with baby brights, 46 chs with soft pink and 43 chs with blackberry, each having approximately 300 ch sts.

Place Mesh flat on floor. Thread 6-inch yarn end of ch in tapestry needle. Starting at top right corner with soft pink ch, weave ch over and under Mesh rows to last Mesh row. Following color order given below, beg weaving next ch under and over the Mesh base, alternating weaving. Continue until all chs are woven in.

Weave rows as follows: [5 rows soft pink, 5 rows blackberry, 1 row baby brights] 4 times, 3 rows soft pink, 3 rows blackberry, 3 rows soft pink, [5 rows soft pink, 5 rows blackberry, 1 row baby brights] 4 times.

BORDER

Rnd 1 (RS): With size H hook, attach blackberry in top corner, ch 1, sc evenly sp around outer edge, working 1 sc in each st across top and bottom of Throw and 1 sc in each dc or middle of ch-4, 1 sc in top and 1 sc in base of each dc on each side of Throw, **join** (*see Pattern Notes*) in beg sc, **do not turn rnds**.

Rnd 2: Ch 1, sc in each sc around, working 2 sc in each corner sc, join in beg sc.

Rnd 3: Ch 3 (*see Pattern Notes*), dc in sc before ch-3, [**dc cross-st** (*see Special Stitch*)] around, working in the 2 sc at corner (dc in first sc, ch 3, dc in 2nd sc) in each corner, join in beg ch-3. Fasten off.

Rnd 4: Join soft pink in any dc, ch 1, sc in each dc around, working in each corner ch-3 sp, sc in first ch, 2 sc in 2nd ch, sc in 3rd ch, join in beg sc.

Rnd 5: Rep rnd 3.

Rnd 6: Join blackberry, rep rnd 4.

Rnd 7: Rep rnd 3.

Rnd 8: Join lavender blue, rep rnd 4.

Rnd 9: Rep rnd 3.

Rnd 10: Join plum wine, rep rnd 4.

Rnd 11: Rep rnd 3.

Rnd 12: Join blackberry, ch 1, sc in each st around, working sc in first corner ch, 3 sc in 2nd ch and sc in 3rd ch, join in beg sc. Fasten off. **cw**

Brava

Versatility meets
affordability.

Brava is our new 100% acrylic yarn, perfect for all of life's adventures! Available in sport, worsted, and bulky weights, Brava is a hard-wearing yarn that works wonders when easy-care is a must. With so much flexibility, you'll love using Brava for everything from charity projects to snugly baby blankets, cozy children's garments, and comfy hats and scarves. Brava is sure to keep your hooks busy season after season.

\$2.99/100g

Knit Picks®

Mocha & Cream

Design by Barbara Hesselbein

SKILL LEVEL

■ ■ ■ □ INTERMEDIATE

FINISHED SIZE

Approximately 60 x 80 inches

MATERIALS

- Caron One Pound medium (worsted) weight acrylic yarn (16 oz/812 yds/453g per skein):
 - 4 skeins #514 off-white
 - 2 skeins #585 lace
- Size K/10½/6.5mm crochet hook or size needed to obtain gauge
- Tapestry needle



GAUGE

9 dc = 3 inches; 2 dc rows = 1½ inches

PATTERN NOTES

Weave in loose ends as work progresses.

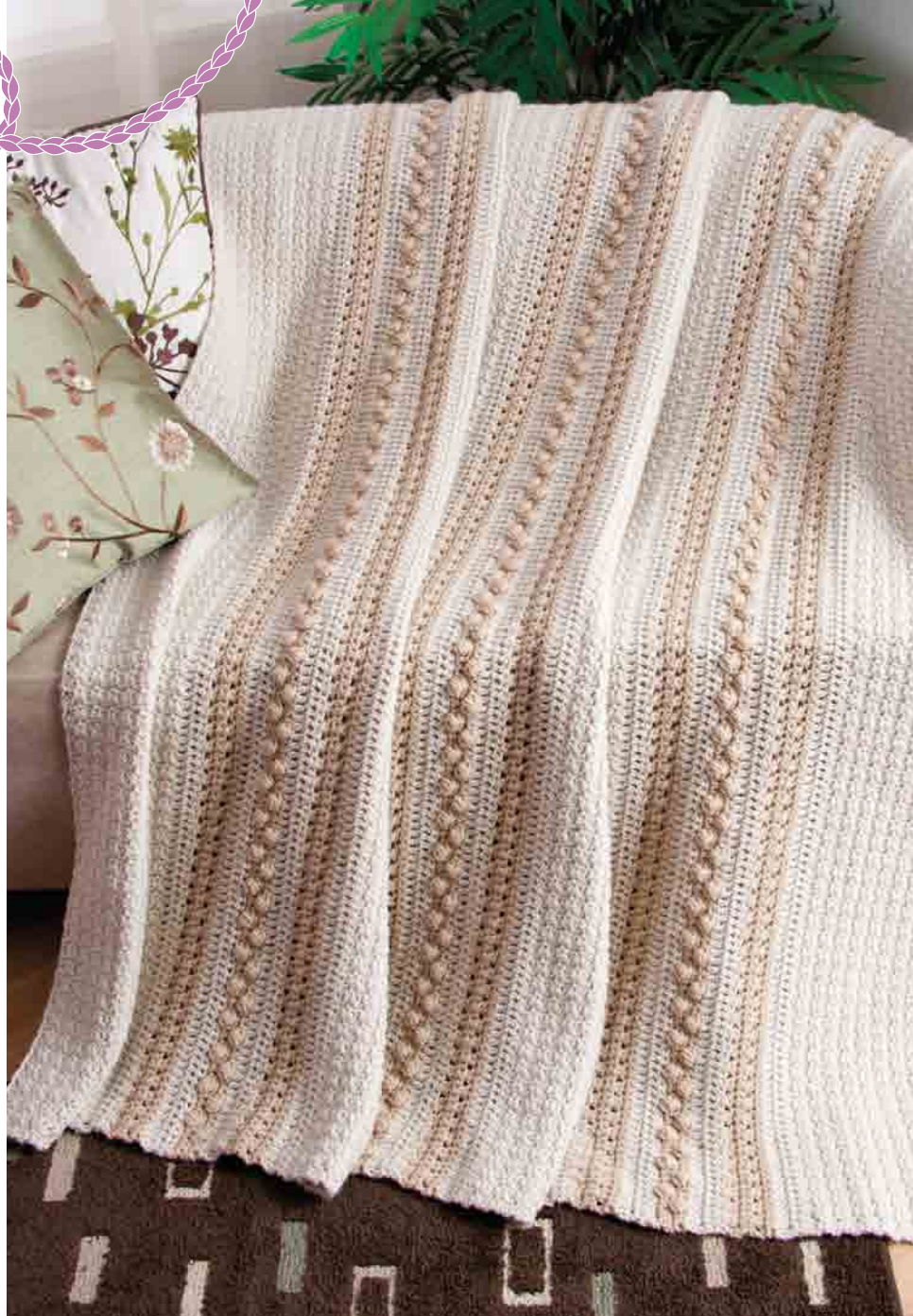
Join with slip stitch as indicated unless otherwise stated.

Chain-3 at beginning of row counts as first double crochet unless otherwise stated.

SPECIAL STITCHES

Double crochet cross-stitch (dc cross-st): Sk next st, dc in next st, dc in sk st.

Puff stitch (puff st): Yo, insert hook in indicated st, yo, draw up lp level with working row, (yo, insert hook in same st, yo, draw lp level with working row) 3 times, yo, draw through all 9 lps on hook.



Soft, neutral shades give a café au lait look to this beautiful throw accented with elegant textural stitches.

THROW

Row 1: With off-white, ch 225, sc in 2nd ch from hook, dc in next ch, [sc in next ch, dc in next ch] across, turn. (112 sc, 112 dc)

Row 2: Ch 1, sc in first dc, dc in next sc, [sc in next dc, dc in next sc] across, turn.

Rows 3–20: Rep row 2.

Row 21: Ch 3 (see Pattern Notes), dc in each st across, turn. (224 dc)

Row 22: Ch 3, dc in each st across, **change color** (see *Stitch Guide*) in last dc to lace, turn.

Row 23: Ch 3, sk next 2 sts, dc in next st, dc in sk st, [**dc cross-st** (see *Special Stitches*)] across, turn.



Row 24: Ch 1, sc in each st across, turn.

Row 25: Rep row 23.

Row 26: Ch 1, sc in each st across, change to off-white, turn.

Rows 27 & 28: Ch 3, dc in each st across, turn. At the end of row 28, change color to lace, turn.

Row 29: Rep row 24.

Row 30: Ch 1, sc in each of next 2 sts, **puff st** (see *Special Stitches*) in next st, [sc in each of next 3 sc, puff st in next st] 54 times, sc in each of next 5 sts, turn. (55 puff sts, 169 sc)

Row 31: Rep row 24.

Row 32: Ch 1, sc in each of next 4 sts, [puff st in next st, sc in each of next 3 sts] 55 times, change color to off-white, turn. (55 puff sts, 169 sc)

Row 33: Rep row 21. (224 dc)

Row 34: Rep row 22.

Row 35: Rep row 23.

Row 36: Rep row 24.

Row 37: Rep row 23.

Row 38: Rep row 24, change color to off-white, turn.

Row 39: Rep row 33.

Row 40: Rep row 34.

Row 41: Ch 1, sc in first st, dc in next st, [sc in next st, dc in next st] across, turn. (112 sc, 112 dc)

Rows 42–60: Rep row 2.

Rows 61–80: Rep rows 21–40.

Rows 81–100: Rep rows 41–60.

Rows 101–120: Rep rows 21–40.

Rows 121–140: Rep rows 41–60. At the end of row 140, fasten off. **CW**



#101592 Frilly Cropped Vest
from Summer Days by Bernat

Patternworks™
Everything for the hand knitter & crocheter!

**FRESH CROCHET
PATTERNS FOR
SPRING!**

Save 10%

Place your order by
4/10/12

Use promo code CW12B
Web orders over \$50 ship free!

Visit www.patternworks.com
to see our entire
product line, or call
1-800-438-5464 to order



Ballerina Mouse

Design by Yvonne Odegard

SKILL LEVEL



FINISHED SIZE

9 inches tall

MATERIALS

- Red Heart Super Saver medium (worsted) weight acrylic yarn (7 oz/364 yds/198g per skein):
1 oz/50 yds/28g each #311 white and #724 baby pink
- Size F/5/3.75mm crochet hook or size needed to obtain gauge
- Stitch markers
- ¼-inch black ball-shank buttons: 2
- DMC Cotton Embroidery Floss (8.7 yds per skein):
1 yd #B5200 white
- ⅛-inch-wide ribbon:
1 yd pink to match yarn
- Fray block
- Tapestry needle
- Soft-sculpture needle
- Polyester fiberfill



GAUGE

4 sc rnds = 1 inch

PATTERN NOTES

Work in continuous rounds. Do not join or turn unless otherwise stated. Place stitch marker to indicate beginning of rounds.

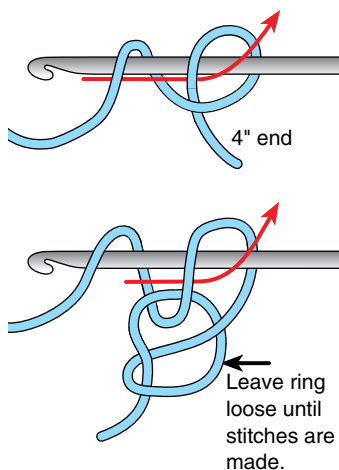
Join with slip stitch as indicated unless otherwise stated.

Chain-3 at beginning of round counts as first double crochet unless otherwise stated.

MOUSE

BODY

Rnd 1: Beg at top of Body with white, make **slip ring** (see illustration), 6 sc in slip ring, pull end of yarn to close ring. (6 sc)



Slip Ring

Rnd 2: 2 sc in each st around, **changing color** (see *Stitch Guide*) to baby pink in last sc. (12 sc)

Rnd 3: With baby pink, [2 sc in next st, sc in each of next 2 sts] around. (16 sc)

Rnd 4: Sc in each st around. (16 sc)

Rnd 5: [2 sc in next st, sc in each of next 3 sts] around. (20 sc)

Rnds 6–8: Sc in each st around. (20 sc)

Rnd 9: [2 sc in next st, sc in each of next 4 sts] around. (24 sc)

Rnd 10: [2 sc in next st, sc in each of next 3 sts] around. (30 sc)

Rnd 11: Sc in each st around. (30 sc)

Rnd 12: Working in **back lps** (see *Stitch Guide*), sc in each st around. (30 sc)

Rnd 13: [Sc dec (see *Stitch Guide*) in next 2 st, sc in each of next 3 sts] around. (24 sc)

Rnd 14: Sc in each st around. (24 sc)

Rnd 15: [Sc dec in next 2 sts, sc in each of next 2 sts] around. (18 sc)

Stuff Body with fiberfill.

Rnd 16: [Sc dec in next 2 sts, sc in next st] around. (12 sc)

Rnd 17: [Sc dec in next 2 sts] around. (6 sc)

Leaving long end, fasten off. Weave long end through top of sts, pull to close. Weave in end to secure.

SKIRT

Rnd 1: With baby pink, **join** (see *Pattern Notes*) yarn in rem lp of rnd 11 of Body, sc in each st around, join in first sc. (30 sc)

Rnd 2: **Ch 3** (see *Pattern Notes*), dc in same st as beg ch-3, 2 dc in each st around, join in top of beg ch-3. (60 dc)

Rnd 3: Ch 3, dc in same st as beg ch-3, 2 dc in each st around, join in back lp of top of beg ch-3. (120 dc)



This little dancer leaps and pirouettes with ease with fully jointed limbs that gracefully move.

Rnd 4: Sl st in back lp of each st around, join in first st. Fasten off. (120 sl sts)

Weave in end.

TAIL

Rnd 1: With white, make slip ring, 4 sc in slip ring, pull end of yarn to close ring. (4 sc)

Rnds 2–12: Sc in each st around. (4 sc)

Leaving long end, fasten off. Weave long end through top of sts, pull to close. Weave in end to secure.

LEG

Make 2.

Note: Legs are worked from the feet up. Stuff as you go. Do not stuff too tightly near the top, as the Legs will be flattened at the

“thigh” area and sewn snugly to the Body.

Rnd 1: With baby pink, ch 6, 2 sc in 2nd ch from hook, sc in each of next 3 chs, 3 sc in last ch, working in opposite side of foundation ch, sc in each of next 3 chs, 2 sc in last ch. **Do not join.** (13 sc)

Rnd 2: 2 sc in next sc, sc in each of next 11 sc, 2 sc in next sc. (15 sc)

Rnd 3: Sc in each of next 4 sts, sc dec in next 2 sts, [hdc dec (see *Stitch Guide*) in next 2 sts] twice, sc dec in next 2 sts, changing color to white in last sc, sc in each of last 3 sts. (11 sts)

Rnd 4: With white, working in back lps, sc in each of next 4 sts, [hdc dec in next 2 sts] twice, sc in each of next 3 sts. (9 sts)

Rnd 5: Sc in each of next 4 sts, sc dec in next 2 sts, sc in each of next 3 sts. (8 sc)

Rnds 6–8: Sc in each st around. (8 sc)

Rnd 9: [2 sc in next st, sc in each of next 3 sts] around. (10 sc)

Rnd 10: Sc in each st around. (10 sc)

Rnd 11: [Sc in each of next 4 sts, 2 sc in next st] around. (12 sc)

Rnd 12: Sc in each st around. (12 sc)

Rnd 13: [2 sc in next st, sc in each of next 3 sts] around. (15 sc)

Rnd 14: Sc in each st around. (15 sc)

Rnd 15: [Sc dec in next 2 sts, sc in next 3 sts] around. (12 sc)

Rnd 16: [Sc dec in next 2 sts] around. (6 sc)

Leaving long end, fasten off. Weave long end through top of sts, pull to close. Weave in end to secure.

ARM

Make 2.

Note: Arms are worked from the hands up. Stuff lightly as you go.

Rnd 1: With white, make slip ring, 6 sc in slip ring, pull end of yarn to close ring. (6 sc)

Rnds 2–5: Sc in each st around. (6 sc)

Rnd 6: [2 sc in next st, sc in each of next 2 sts] around. (8 sc)

Rnds 7–12: Sc in each st around. (8 sc)

Rnd 13: [Sc dec in next 2 sc] around. (4 sc)

Leaving long end, fasten off. Weave long end through top of sts, pull to close. Weave in end to secure.

HEAD

Note: Head is worked from tip of nose to back of head.

Rnd 1: With white, make slip ring, 4 sc in slip ring, pull end of yarn to close ring. (4 sc)

Rnd 2: 2 sc in each st around. (8 sc)

Rnd 3: [2 sc in next st, sc in next st] around. (12 sc)

Rnd 4: [2 sc in next st, sc in each of next 2 sts] around. (16 sc)

Rnd 5: [2 sc in next st, sc in each of next 3 sts] around. (20 sc)

Rnd 6: [2 sc in next st, sc in each of next 4 sts] around. (24 sc)

Rnd 7: [2 sc in next st, sc in each of next 5 sts] around. (28 sc)

Rnds 8–11: Sc in each st around. (28 sc)

Rnd 12: [Sc dec in next 2 sts, sc in each of next 5 sts] around. (24 sc)

Rnd 13: [Sc dec in next 2 sts, sc in each of next 2 sts] around. (18 sc)

Stuff the Head.

Rnd 14: [Sc dec in next 2 sts, sc in next st] around. (12 sc)

Rnd 15: [Sc dec in next 2 sts] around. (6 sc)

Leaving long end, fasten off. Weave long end through top of sts, pull to close. Weave in end to secure.

EAR

Make 2.

Note: Each Ear is worked in 2 pieces, first the pink inner part, and then the white outer part. The 2 pieces are then joined by holding them tog and working sc around edge. The Ears are not stuffed.

Inner Ear

Row 1: With pink, ch 6, sc in 2nd ch from hook and in each rem ch across, turn. (5 sc)

Row 2: Ch 1, 2 sc in first st, sc in each of next 3 sts, 2 sc in last st, turn. (7 sc)

Row 3: Ch 1, sc dec in next 2 sts, sc in each of next 3 sts, sc dec in next 2 sts, turn. (5 sc)

Row 4: Ch 1, sc dec in next 2 sts, sc in next st, sc dec in next 2 sts. Fasten off. (3 sc)

Weave in ends.

Outer Ear

Rows 1–4: With white, rep rows 1–4 of Inner Ear. At end of last row, do not fasten off.

Ear Assembly

With Inner Ear and Outer Ear held tog and with Inner Ear facing away from you, align sts, ch 1, working through both thicknesses, work 17 sc evenly sp around edge, join in first sc. Leaving long tail, fasten off.

HEAD & BODY ASSEMBLY & FINISHING

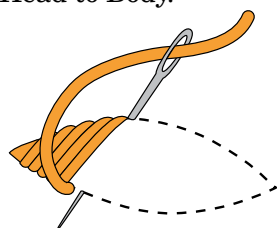
Referring to photo for placement, sew 1 Ear over rnd 10 on each side of Head.

Referring to photo for the eye placement, with 2 strands of embroidery floss held tog, sew buttons to rnd 6 of Head.

Eye Socket Shaping

*Sew from 1 button shank through the Head to the other button shank, pulling them slightly toward each other, rep

from * 3 times to secure the eyes, then insert needle back into button shank, into Head just behind button and back out at top of Head just at the edge where Ear on opposite side of Head is sewn (*this will be a diagonal st*), pull slightly to cause buttons to indent into Head, creating shape of Eye Socket. Rep for rem Eye Socket. Secure embroidery floss by weaving under several sts. Referring to photo, using an 18-inch length of baby pink, use **satin stitch** (see illustration) to create 4 horizontal sts over rnd 1 of Head for Nose. Sew Head to Body.



Satin Stitch

ARM ASSEMBLY

Thread soft-sculpture needle with approximately 2 feet white yarn. *Insert the needle through rnd 11 of the Arm and then insert needle completely through Body to other side of rnd 4, insert needle through rnd 11 of rem Arm. Insert needle through sc next to where yarn came out of the 2nd Arm, through same exit point on Body, through Body through entry point on opposite side of Body and through sc next to where yarn entered first Arm. Pull snugly so Arms indent into Body slightly, rep from * 3 times so Arms are secure. Weave in ends under several sts.

LEG ASSEMBLY

Working through rnd 13 of each Leg and rnd 13 of Body, rep Arm Assembly to sew Legs to Body.

FINISHING

Sew Tail to back of Body at rnd 12, centering it between Legs.

Using tapestry needle and 18-inch length of ribbon, insert needle at the back side of foot under centermost pink sc of rnd 3 of 1 Leg and back out other side. Remove needle and pull ribbon so that there is an equal amount on each side of sc. Cross ribbon over itself so insertion point is covered. Wrap ribbon around to front of ankle, crisscross the ends and bring it back around to back. Crisscross ribbon ends again, bring them to front. Tie ribbon in bow. Cut off excess ribbon at an angle, and apply a small dot of fray block to ends to prevent it from fraying. Rep with rem length of ribbon on 2nd Leg. **CW**

Lizbeth® Request a free catalog at www.lizbeththread.com
Crochets, Tats, and Knits like a dream!

100% Egyptian Cotton Thread
Sizes: 10, 20, 40, 80 **150 vibrant colors**

Lizbeth® Thread Holder **New!**

- Side opening - for easy changing of thread
- Internal peg holds thread for easy unwrapping
- Latch keeps thread ball intact if dropped
- Made of durable poly carbonate plastic

Handy Hands, Inc. • 578 N 1800 E • Paxton, IL 60957
www.hhtatting.com • Ph: (217) 379-3802 • M-F 9-5 CT

Keep thread clean, neat, and handy!

LA ESPIGA

Espiga Nylon Thread
- 4 different sizes 6, 9, 18, 24.
- 75 different solid and variegated colors

OMEGA

Omega Distribuidora de Hilo, S.A. de C.V. - Calle San Antonio Road No. 21, Cal. Tepic, Jalisco, Mexico • Tel: 011 52 31 352 28660 • mail@omega.com.mx
www.crochetstyleweb.com • www.hiloomexico.com.mx • Made in Mexico

Ladybug, Ladybug

Design by Mary Pueschner
for Caron International

SKILL LEVEL



FINISHED SIZE

12 x 14 inches

MATERIALS

- Caron Simply Soft medium (worsted) weight acrylic yarn (6 oz/315 yds/170g per skein):
1 skein each #9729 red and #9727 black
1 yd each #9701 white and #9712 soft blue
- Sizes F/5/3.75mm and G/6/4mm crochet hooks or size needed to obtain gauge
- Yarn needle
- 10-inch round pillow form
- Fiberfill
- Pink fabric paint or 1 yd pink yarn
- Stitch marker



GAUGE

Size G hook: 13 sc = 3 inches;
10 sc rnds = 2 inches

PATTERN NOTES

Weave in loose ends as work progresses.

Do not join unless otherwise stated. Use stitch marker to mark rounds.

Join rounds with slip stitch as indicated unless otherwise stated.

BODY

BOTTOM

Rnd 1: With size G hook and black, leaving a 2-inch tail, ch 4,

join (see *Pattern Notes*) to form ring, working over tail, work 6 sc in ring, **do not join** (see *Pattern Notes*), mark rnd with marker, move marker as work progresses. Pull gently on beg tail to close opening. (6 sc)

Rnd 2: 2 sc in each sc around. (12 sc)

Rnd 3: [Sc in next sc, 2 sc in next sc] 6 times. (18 sc)

Rnd 4: [Sc in each of next 2 sc, 2 sc in next sc] 6 times. (24 sc)

Rnd 5: [Sc in each of next 3 sc, 2 sc in next sc] 6 times. (30 sc)

Rnd 6: [Sc in each of next 4 sc, 2 sc in next sc] 6 times. (36 sc)

Rnd 7: [Sc in each of next 5 sc, 2 sc in next sc] 6 times. (42 sc)

Rnd 8: [Sc in each of next 6 sc, 2 sc in next sc] 6 times. (48 sc)

Rnd 9: [Sc in each of next 7 sc, 2 sc in next sc] 6 times. (54 sc)

Rnd 10: [Sc in each of next 8 sc, 2 sc in next sc] 6 times. (60 sc)

Rnd 11: [Sc in each of next 9 sc, 2 sc in next sc] 6 times. (66 sc)

Rnd 12: [Sc in each of next 5 sc, 2 sc in next sc] 11 times. (77 sc)

Rnd 13: Ch 1, sc in each sc around.

Rnd 14: Rep rnd 13.

Rnd 15: [Sc in each of next 5 sc, 2 sc in next sc] 12 times, sc in each of next 5 sc. (89 sc)

Rnds 16 & 17: Rep rnd 13.

Rnd 18: [Sc in each of next 5 sc, 2 sc in next sc] 14 times, sc in each of next 5 sc. (103 sc)

Rnd 19: [Sc in each of next 4 sc, 2 sc in next sc] 20 times, sc in each of next 3 sc. (123 sc)

Rnds 20–22: Rep rnd 13.

Rnd 23: [Sc in each of next 10 sc, **sc dec** (see *Stitch Guide*) in next 2 sc] 10 times, sc in each of next 3 sc. Fasten off. (113 sc)

TOP

Rnds 1–23: With red, rep rnds 1–23 of Bottom, at the end of rnd 23, **do not fasten off**. (113 sc)

Rnds 24–28: Rep rnd 13. At the end of rnd 28, **do not fasten off**.

JOINING

Rnd 29: With WS of Bottom and Top held tog, matching sts and working through both thicknesses and continuing with red, sc in each of



next 70 sts, insert pillow form, sc in each of next 43 sts, join in beg sc. Fasten off.

HEAD

Rnd 1: With size G hook and black, leaving a 2-inch tail, ch 4, join to form ring, working over tail, work 8 sc in ring, **do not join**, mark rnd with marker, move marker as work progresses. Pull gently on beg tail to close opening. (8 sc)

Rnd 2: [2 sc in each of next 2 sc, 2 hdc in each of next 2 sc] twice. (8 sc, 8 hdc)

Rnd 3: Sc in each of next 2 sts, 2 hdc in each of next 4 sts, sc in each of next 4 sts, 2 hdc in each of next 4 sts, sc in each of next 2 sts. (24 sts)

Rnd 4: [Sc in next st, 2 sc in next st] 12 times. (36 sc)

Rnd 5: [Sc in each of next 3 sc, 2 sc in next sc] 9 times. (45 sc)

Rnd 6: Sc in each sc around.

Rnd 7: [Sc in each of next 4 sc, 2 sc in next sc] 9 times. (54 sc)

Rnds 8–10: Rep rnd 6.

Rnd 11: [Sc in each of next 3 sc, sc dec in next 2 sc] 10 times, sc in each of next 4 sts. (44 sc)

Rnd 12: Rep rnd 6.

Rnd 13: Sc in each of next 11 sc, [sc dec in next 2 sc] 11 times, sc in each of next 11 sc. (33 sc)

Rnd 14: [Sc dec in next 2 sc] 3 times, sc in each of next 21 sc, [sc dec in next 2 sc] 3 times. (27 sc)

Rnd 15: Rep rnd 6, leaving 10-inch length of yarn, fasten off.

Stuff Head with fiberfill and sew to Body centered at 1 end of Body, sewing to rnds 21–23 of Bottom and rnds 24–28 of Top.

EYE

Make 2.

Note: Before starting Eyes, cut 1 strand black 16 inches long,



1 strand white 30 inches long and 1 strand soft blue 18 inches long. Separate strands into 2 plies each.

Rnd 1 (RS): With size F hook and 2 plies black, ch 2, 6 sc in 2nd ch from hook, join in first sc. Fasten off. (6 sc)

Rnd 2 (RS): Join 2-ply length of soft blue with sc in any st, sc in same st, 2 sc in each rem 5 sc, join in beg sc. Fasten off. (12 sc)

Rnd 3 (RS): Join 2-ply length of white with sc in any sc, sc in each rem sc around, **do not join**. (12 sc)

Rnd 4 (RS): Sc in each sc around. Fasten off.

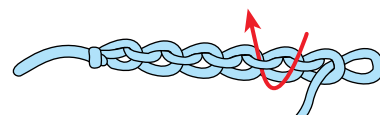
Stuff Eyes lightly with fiberfill and sew to front of Head with 1¼-inch sp between Eyes.

ANTENNAE

Make 2.

Row 1: With size G hook and black, leaving a length at beg, ch 7, working in **back bar of**

ch (see illustration), sc in 2nd ch from hook, sc in each rem ch across, leaving a length of yarn. Fasten off.



Back Bar of Chain

Use tails to attach Antennae, tie 1 to each side of top of Head above Eyes.

FOOT

Make 6.

Rnd 1: With size G hook and black, ch 2, 7 sc in 2nd ch from hook, **do not join**, place marker, move marker as work progresses. (7 sc)

Rnd 2: 2 sc in each sc around. (14 sc)

Rnd 3: [Sc in next sc, 2 sc in next sc] 7 times. (21 sc)

Continued on page 62

Kids' Travel Neck Pillow

Design by Debra Arch

SKILL LEVEL

■ ■ ■ ■ BEGINNER

FINISHED SIZE

10 inches long x 11 inches wide

MATERIALS

- Lily Sugar'n Cream medium (worsted) weight cotton yarn (solid: 2½ oz/120 yds/70g per ball; ombré: 2 oz/95 yds/56g per ball):
1 ball each #02316 beach ball blue and #01742 hot blue
- Size G/6/4mm crochet hook or size needed to obtain gauge
- Fiberfill



GAUGE

4 sc = 1 inch; 4 sc rows = 1 inch

PATTERN NOTES

Weave in loose ends as work progresses.

Join with slip stitch as indicated unless otherwise stated.

PILLOW

FRONT

First Half

Row 1: Starting at front edge, with hot blue, ch 9, sc in 2nd ch from hook, sc in each rem ch across, turn. (8 sc)

Row 2: Ch 1, 2 sc in first sc, sc in each sc across to last sc, 2 sc in last sc, turn. (10 sc)

Row 3: Rep row 2. (12 sc)



Long trips in the car will be more comfortable for your little one with this restful, reversible neck pillow.

Rows 4–19: Ch 1, sc in each sc across, turn.

Row 20: Ch 1, 2 sc in first sc, sc in each rem sc across, turn. (13 sc)

Row 21: Ch 1, sc in each sc across to last sc, 2 sc in last sc, turn. (14 sc)

Rows 22–25: [Rep rows 20 and 21 alternately] twice, turn. (18 sc)

Row 26: Ch 1, 2 sc in first sc (neck edge), sc in each sc across to last 2 sc, **sc dec** (see *Stitch Guide*) in last 2 sc. Fasten off. (18 sc)

2nd Half

Rows 1–25: Rep rows 1–25 of First Half. (18 sc)

Row 26: Ch 1, 2 sc in first sc, sc in each sc across to last 2 sc, sc dec in last 2 sc, **do not fasten off**, turn. (18 sc)

Row 27: Ch 1, sc dec in next 2 sc, sc in each of next 15 sc, 2 sc in last sc, ch 2, pick up First Half, working at neck edge of row 26, 2 sc in first sc, sc in each of next 15 sc, sc dec in last 2 sc, turn. (36 sc, 2 chs)

Row 28: Ch 1, sc dec in next 2 sc, sc in each of next 16 sc, sc in each of next 2 chs, sc in each of next 16 sc, sc dec in next 2 sc, turn. (36 sc)

Row 29: Ch 1, sc dec in next

2 sc, sc in each sc across to last 2 sc, sc dec in last 2 sc, turn. (34 sc)

Rows 30–35: [Rep row 29] 6 times. At the end of row 35, fasten off. (22 sc)

BACK


First Half

Rows 1–26: With beach ball blue, rep rows 1–26 of First Half of Front. (18 sc)

2nd Half

Rows 1–35: With beach ball blue, rep rows 1–35 of 2nd Half of Front. (22 sc)

ASSEMBLY

Rnd 1: With WS of Front and Back tog, matching sts and working through both thicknesses, **join** (see *Pattern Notes*) hot blue in any st, ch 1, work approximately 174 sc evenly sp around, working 2 sc in each outer corner, stuffing lightly with fiberfill before closing, join in beg sc. Fasten off. 



Darling Daisies

Designs by Diane Stone

BRACELET

SKILL LEVEL

■ ■ ■ ■ ■ BEGINNER

FINISHED SIZE

Approximately 5½–7½ inches
in circumference

MATERIALS

- Aunt Lydia's Classic Crochet size 10 crochet cotton (white: 400 yds per ball; solid: 350 yds per ball):
 - 6 yds #12 black
 - 2 yds #1 white
- Size 5/1.90mm steel crochet hook
- Tapestry needle
- Size 6/0 blue-lined yellow round beads: 28–38 (see *Pattern Notes*)
- Large-eye beading needle
- Clear, flexible permanent adhesive
- White craft glue



GAUGE

Gauge is not important for this project.

BRACELET

PATTERN NOTES

Use 2 strands of thread held together throughout unless otherwise stated.

Number of beads required will depend on length of bracelet. Use 5 beads for each inch of length, rounding up if necessary.

BODY

Row 1: Holding 2 strands of black tog (see *Pattern Notes*), **string beads** (see *Pattern Notes*) onto crochet cotton, leaving a

4-inch tail, ch 2, sc in 2nd ch from hook, slide 1 bead up, turn.

Row 2: Ch 1, sc in sc, slide 1 bead up, turn.

Next rows: Rep row 2 until desired length is reached. Leaving 4-inch tail, fasten off.

ASSEMBLY

Thread a 24-inch length of white onto tapestry needle to make a 12-inch doubled strand. Weave through center of Bracelet, as shown in photo.

Holding black and white tails at 1 end of Bracelet tog, knot close to end. Rep on rem end. Cut white tails only close to each knot.

Thread 1 double-strand black tail through beading needle and string on 2 beads. Remove needle.

Thread rem double-strand black tail through needle, slip needle back through beads on opposite tail. Remove needle.

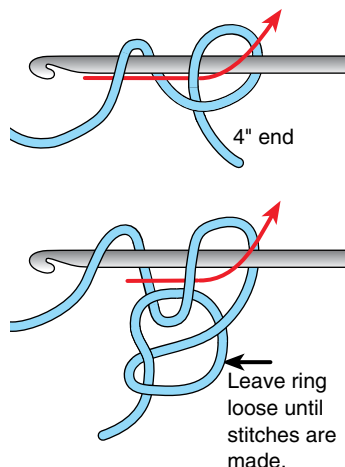
Holding tails, pull ends of bracelet tog. Thread 2 beads onto each tail and slide them up 2 inches. Tie knots at each end to secure beads. Trim ends.

FLOWER

With 1 strand of white, form **slip ring** (see *illustration*), (ch 2, dc, ch 2, sl st in ring) 8 times. Fasten off.



Add a fun, fanciful touch to a little girl's outfit with cute daisy hair clips and a sweet matching bracelet.



Slip Ring

Stiffen flower with equal amounts of water and white glue. Let dry.

Using clear, flexible permanent adhesive, glue 1 bead to center of Flower, glue Flower to center of Bracelet. Allow glue to dry.

HAIR CLIPS

COVER

Make 2.

Apply fray block to each end of ribbon to prevent fraying.

Open clip and place 1 end of 1 length of grosgrain ribbon inside clip; close clip.

Run a strip of hot glue down center top of clip. Press ribbon down and hold until glue sets.

Hot glue extended end of ribbon to spring end of clip as shown in photo, pressing in place with fingers until glue sets. Turn rem end of ribbon underneath clip and glue in place.

CLIP CENTER

Note: If preferred, ½-inch yellow craft buttons may be substituted.

Roll a small amount of clay ⅛ inch thick and cut into two ½-inch circles using a small lid or bottle cap. Bake according to manufacturer's directions. Let cool. Paint with clear nail polish. Set aside to dry.

LARGE FLOWER

Make 2.

Rnd 1: Holding 2 strands of white tog, form **slip ring** (see illustration), 10 sc in ring, pull end of crochet cotton tightly to close ring, join with sl st in first sc.

Rnd 2: Ch 5, sl st in joining st, *(sl st, ch 5, sl st) in next sc, rep from * around. Fasten off.

FINISHING

Stiffen Large Flowers with a mixture of equal parts of craft glue and water. Let dry.

Hot glue 1 clay center or craft button to center of each Flower using clear, flexible permanent adhesive. Let dry.

LEAVES

Make 2.

With chartreuse, ch 5, sl st in 2nd ch from hook, sc in next ch, dc in each of next 2 chs, ch 6, sl st in 2nd ch from hook, sc in next ch, dc in each of next 2 chs, leave last ch unworked. Fasten off.

Using hot-glue gun, glue 1 Leaf to back of each Large Flower.

SMALL FLOWER

Make 4.

Working with 1 strand white, form slip ring, (ch 2, dc, ch 2, sl st) 6 times in ring. Fasten off.

Using clear, flexible permanent adhesive, glue bead to center of each Small Flower. Let dry.

ASSEMBLY

Cut ⅛-inch-wide mini-dot ribbon into 4 equal lengths.

*Using hot glue, glue ends of 2 ribbon lengths to center top of 1 clip. Position 1 Large Flower over ribbon ends and glue to clip. Glue 1 Small Flower on each end of ribbon. Rep from * on rem Clip. **cw**

HAIR CLIPS

SKILL LEVEL

■ ■ ■ ■ ■ BEGINNER

FINISHED SIZE

Large flower: 1⅜ inches in diameter

MATERIALS

- Aunt Lydia's Classic Crochet size 10 crochet cotton (white: 400 yds per ball; solid: 350 yds per ball):
10 yds #1 white
1 yd #484 myrtle green
- Size 5/1.90mm steel crochet hook
- ⅜-inch-wide grosgrain nylon ribbon: 2 lengths 4½ inches
- ⅛-inch-wide mini-dot nylon ribbon: 18 inches
- 2-inch alligator clips: 2
- Size 6/0 blue-lined yellow round beads: 4
- Yellow oven-bake clay for flower centers, or ½-inch yellow craft buttons: 2
- Hot glue
- Hot-glue gun
- Clear, flexible permanent adhesive
- White craft glue
- Clear nail polish (optional)

GAUGE

Gauge is not important for this project.



Lacy Fans Bag

Design by Jessica Elisabeth

SKILL LEVEL

■ ■ ■ ■ ■ INTERMEDIATE

FINISHED SIZE

Approximately 13¼ x 18 inches,
excluding Handles

MATERIALS

- Lily Sugar'n Cream Super Size medium (worsted) weight cotton yarn (3 oz/150 yds/85g per ball):
3 balls #19178 potpourri
- Size J/10/6mm crochet hook or size needed to obtain gauge
- Yarn needle



GAUGE

8 tr in indicated place = 2½ inches;
rnds 1–4 = 4½ inches

PATTERN NOTES

Join with slip stitch as indicated unless otherwise stated.

When told to work in treble crochet picot stitches, work in chain space at tip of stitch.

Chain-4 at beginning of row counts as first treble crochet unless otherwise stated.

SPECIAL STITCHES

Beginning treble crochet picot (beg tr picot): Ch 7, sl st in 4th ch from hook.

Treble crochet picot (tr picot): Tr in indicated st or sp, ch 3, sl st in top of tr.

BAG

BODY

Rnd 1: Ch 33, 7 tr in 5th ch from hook (*beg 4 sk chs count as first tr*), sk next ch, *(dc, ch 1, dc) in next ch, sk next 3 chs, 8 tr in next ch, sk next 3 chs*, rep between * twice, (dc, ch 1, dc) in next ch, sk next ch, 8 tr in last

ch, working in rem lps on opposite side of foundation ch, sk next ch, rep between * 3 times, (dc, ch 1, dc) in next ch, **join** (*see Pattern Notes*) in top of beg 4 sk chs. (16 dc, 8 ch-1 sps, 8 tr groups)

Rnd 2: Beg tr picot (*see Special Stitches*), **tr picot** (*see Special Stitches*) in same st as beg tr picot, 2 tr picots in each of next 7 sts, *[(dc, ch 1, dc) in next ch-1 sp, tr picot in each of next 8 tr]* 3 times, (dc, ch 1, dc) in next ch-1 sp, 2 tr picots in each of next 8 sts, rep between * 3 times, (dc, ch 1, dc) in next ch-1 sp, join in 4th ch of beg ch-7.

Rnd 3: Without turning, sl st in last ch-1 sp made on previous rnd, ch 9 (*counts as first tr and ch-5 sp*), [sk next 2 tr picots, sc in next tr picot, ch 5] twice, sk next 4 tr picots, sc in next tr picot, ch 5, sk next 2 tr picots, sc in next tr picot, ch 5, *tr in next ch-1 sp, ch 5, [sk next 2 tr picots, sc in next tr picot, ch 5] twice*, rep between * twice more, tr in next ch-1 sp, ch 5, [sk next 2 tr

picots, sc in next tr picot, ch 5] twice, sk next 4 tr picots, sc in next tr picot, ch 5, sk next 2 tr picots, sc in next tr picot, ch 5, rep between * 3 times, join in 4th ch of ch-9.

Rnd 4: Ch 1, sc in first ch-5 sp, *sc in next ch-5 sp, 8 tr in next ch-5 sp, sc in each of next 3 ch-5 sps*, [8 tr in next ch-5 sp, sc in each of next 2 ch-5 sps] 3 times, rep between * once, rep between [] twice, 8 tr in next ch-5 sp, sc in next ch-5 sp, join in first sc. (20 sc, 8 tr groups)

Rnd 5: Ch 1, sc in same st as beg ch-1, sk next st, *tr picot in each of next 8 tr, sk next st, sc in next st, [tr picot in each of next 8 tr, sc in natural sp between next 2 sts] twice, tr picot in each of next 8 tr*, sk next st, sc in next st, rep between * once, join in first sc. (8 sc, 8 groups of tr picots)

Rnd 6: Ch 1, sc in first st, ch 5, *sk next 2 tr picots, [sc in next tr picot, ch 5, sk next 2 tr picots] twice**, sc in next st, ch 5, rep



from * around, ending last rep at **, join in first sc. (24 sc, 24 ch-5 sps)

Rnd 7: Ch 1, sc in first st and first ch-5 sp, 8 tr in next ch-5 sp, *sc in next ch-5 sp**, sc in next st, sc in next ch-5 sp, 8 tr in next ch-5 sp, rep from * around, ending last rep at **, join in first sc. (24 sc, 8 tr groups)

Rnd 8: Ch 1, sc in first st, tr picot in each of next 8 tr, *sk next st, sc in next st, tr picot in each of next 8 tr, rep from * around, join in first sc.

Rnds 9–15: [Rep rnds 6–8 consecutively] 3 times, ending last rep with rnd 6.

Rnd 16: Ch 3 (counts as first dc), sc in next ch-5 sp, 8 tr in next ch-5 sp, [sc in next ch-5 sp, dc in next st, sc in next ch-5 sp, 8 tr in next ch-5 sp] 7 times, sc in next ch-5 sp, join in 3rd ch of beg ch-3.

Rnd 17: Sl st in each of next 2 sts, beg tr picot, tr picot in each of next 7 sts, sk next 3 sts, *tr picot in each of next 8 sts, sk next 3 sts, rep from * around, join in top of beg tr picot.

FIRST HANDLE

Row 1: Ch 2, sk next 2 tr picots, sc in next tr picot, ch 5, sk next 2 tr picots, sc in next tr picot, leaving rem sts unworked, turn.

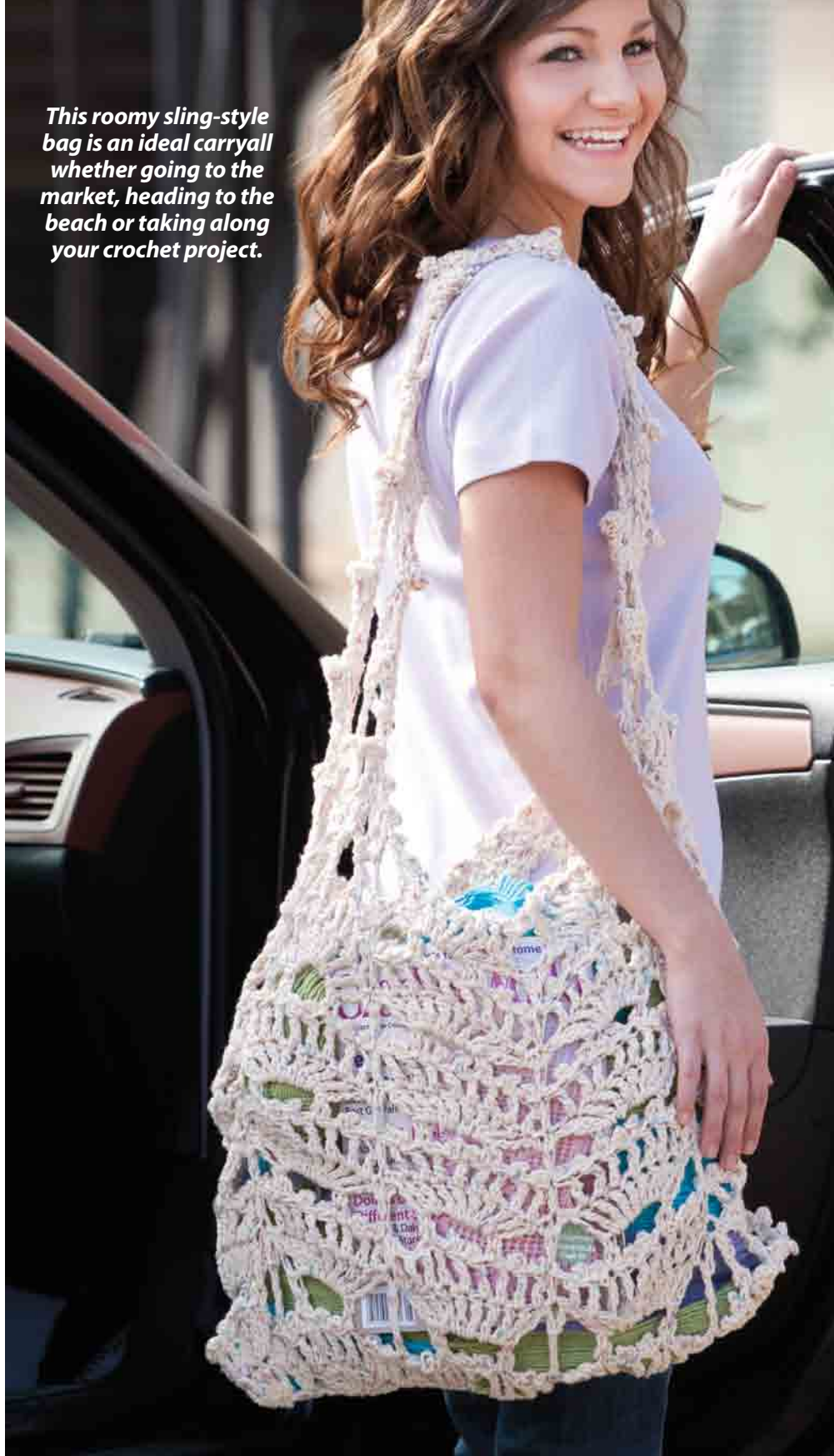
Row 2: Ch 4 (see Pattern Notes), 4 tr picot in 3rd ch of next ch-5 sp, tr in next st, turn.

Row 3: Ch 4, sc in first tr picot, ch 5, sk next 2 tr picot, sc in next tr picot, tr in next st, turn.

Rows 4–21: [Rep rows 2 and 3 alternately] 9 times.

Row 22: Making sure Handle isn't twisted, ch 4, sk first 20 tr picot from rnd 17 of Body, sc in next tr picot on rnd 17, sc in first tr picot on Handle, ch 5, sc in 3rd tr picot on Handle, sc in 3rd tr picot on rnd 17 of Body, tr in last tr on Handle, fasten off.

This roomy sling-style bag is an ideal carryall whether going to the market, heading to the beach or taking along your crochet project.



2ND HANDLE

Row 1: With RS facing, join yarn in row 22 opposite First Handle, rep row 1 of First Handle.

Rows 2–22: Rep rows 2–22 of First Handle.

Weave in yarn ends. **cw**

Explorea Trails Trellis Wrap

Design by Margaret Hubert
for Caron International

SKILL LEVEL

■ ■ ■ ■ EASY

FINISHED SIZE

20 x 60 inches

MATERIALS

- NaturallyCaron.com
Spa light (light worsted)
weight acrylic/rayon
from bamboo yarn (3 oz/
251 yds/85g per ball):
6 balls #0005 ocean spray
- Size H/8/5mm crochet hook or
size needed to obtain gauge
- Yarn needle
- Straight pins



GAUGE

7 dc = 1½ inches; 5 dc rows =
2¼ inches

PATTERN NOTES

Weave in loose ends as work progresses.

Join with slip stitch as indicated unless otherwise stated.

Chain-3 at beginning of row counts as first double crochet unless otherwise stated.

SPECIAL STITCH

Shell: 5 dc in indicated st.

WRAP

FIRST HALF

Foundation row (RS): Beg at center of Wrap, ch 86, sc in 2nd ch from hook, sc in each rem ch across, turn. (85 sc)



Row 1 (WS): Ch 3 (see *Pattern Notes*), dc in each of next 6 sc, [sk next 2 sc, **shell** (see *Special Stitch*) in next sc, ch 2, sk next 3 sc, dc in each of next 7 sc] 6 times, turn. (6 shells, 49 dc)

Row 2 (RS): Ch 3, dc in each of next 6 dc, [sk next ch-2 sp, shell in next dc (*first dc of shell*), ch 2, sk next 4 dc of same shell, dc in each of next 7 dc] 6 times, turn. (6 shells, 49 dc)

Rows 3–62: [Rep rows 1 and 2 alternately] 30 times. At the end of row 62, fasten off.

2ND HALF

Row 1 (WS): Working in opposite side of foundation ch of foundation row, ch 1, ch 3, dc in each of next 6 chs, [sk next 2 chs, shell in next ch, ch 2, sk next 3 chs, dc in each of next 7 chs] 6 times, turn. (6 shells, 49 dc)

Row 2 (RS): Rep row 2 of First Half.

Rows 3–62: [Rep rows 1 and 2 of First Half alternately] 30 times. At end of last row, fasten off.

3-RING MOTIF

Make 16.

First Ring

Row 1: Ch 5, **join** (see *Pattern Notes*) in first ch, ch 3, 13 dc in ring, **do not join**, turn. (14 dc)

Row 2: Ch 1, sc in first dc, sc in next dc, [ch 6, sc in each of next 2 dc] 6 times, **do not fasten off**, turn. (14 sc, 6 ch-6 sps)

2nd Ring

Row 1: Ch 6, sl st in next ch-6 sp (last ch sp on row 2 of First Ring), turn, ch 3, work 13 dc in ch-6 sp just made, sl st in first sc of row 2 of First Ring, turn. (14 dc)

Row 2: Ch 1, sc in first dc, sc in next dc, [ch 6, sc in each of next 2 dc] 6 times, sl st in next free ch-6 sp of First Ring, do not fasten off, turn.

3rd Ring

Row 1: Ch 6, sl st in next ch-6 sp (last ch sp on row 2 of 2nd Ring), turn, ch 3, work 13 dc in ch-6 sp just made, sl st in next free ch-6 sp of First Ring, turn. (14 dc)

Row 2: Ch 1, sc in first dc, sc in next dc, [ch 6, sc in each of next 2 dc] 6 times. Fasten off.

FINISHING

Pin 3-Ring Motifs evenly sp over center dc panel of Wrap (4th group of 7-dc sts), positioning 8 Motifs on each half of Wrap. When sewing Motifs to Wrap, do not sew Motifs flat, leave dimension to each Three-Ring Motif. Sew Motifs in place, remove straight pins. **cw**

An otherwise simple wrap gets an elegant upgrade with the addition of beautiful free-form embellishments.



A Study in Black & White

Designs by Joyce Geisler

SKILL LEVEL

■ ■ ■ □ □ EASY

FINISHED SIZES

Necklace: 1 x 22½ inches, excluding clasp

Bracelet: 1 x 8¼ inches, excluding clasp

Earrings: 1 x 2 inches, excluding ear wire

MATERIALS (NECKLACE)

- Size 10 crochet cotton: 12 yds each black and white
- Size 5/1.90mm steel crochet hook or size needed to obtain gauge
- 1 spring-ring clasp
- 1 jump ring
- Fabric stiffener



MATERIALS (BRACELET)

- Size 10 crochet cotton: 5 yds each black and white
- Size 5/1.90mm steel crochet hook or size needed to obtain gauge
- 1 spring-ring clasp
- 1 jump ring
- Fabric stiffener



MATERIALS (EARRINGS)

- Size 10 crochet cotton: 3 yds each black and white
- Size 5/1.90mm steel crochet hook or size needed to obtain gauge
- 2 hook ear wires
- Fabric stiffener



GAUGE

Motif: 1 x 1 inch from point to point

Nothing is more stylish than fashion accessories in classic black and white. This jewelry set is a perfect example.



NECKLACE

PATTERN NOTES

Alternate colors when working Motifs.

Join with slip stitch as indicated unless otherwise stated.

CLASP MOTIF

String eye of clasp on crochet cotton, ch 5, **join** (see *Pattern Notes*) in 5th ch from hook to form ring, ch 3, 2 dc in ring, ch 1, sl st in eye at end of clasp, ch 1, (3 dc in ring, ch 3) 3 times, join in top of beg ch-3. Fasten off.

MOTIF 2

Ch 5, join in 5th ch from hook to form ring, ch 3, 2 dc in ring, ch 1, sl st in ch-3 sp opposite clasp on previous Motif, ch 1, (3 dc in ring, ch 3) 3 times, join in top of beg ch-3. Fasten off.

MOTIF 3

Ch 5, join in 5th ch from hook to form ring, ch 3, 2 dc in ring, ch 1, sl st in ch-3 sp opposite joined sp on previous Motif, ch 1, (3 dc in ring, ch 3) 3 times, join beg ch-3. Fasten off.

MOTIFS 4-21

Rep Motif 3.

MOTIF 22

String jump ring on crochet cotton, ch 5, join in 5th ch from hook to

form ring, ch 3, 2 dc in ring, (ch 1, sl st in jump ring) twice, ch 1, 3 dc in ring, ch 3, 3 dc in ring, ch 1, sl st in ch-3 sp opposite joined sp on previous Motif, ch 1, 3 dc in ring, ch 3, join in top of beg ch-3. Fasten off. Weave in ends.

BRACELET

PATTERN NOTES

Alternate colors when working Motifs.

Join with slip stitch as indicated unless otherwise stated.

CLASP MOTIF

Rep Clasp Motif of Necklace.

MOTIF 2

Rep Motif 2 of Necklace.

MOTIFS 3-7

Rep Motif 3 of Necklace.

MOTIF 8

Rep Motif 22 of Necklace.

EARRINGS

PATTERN NOTES

Join with slip stitch as indicated unless otherwise stated.

EARRING

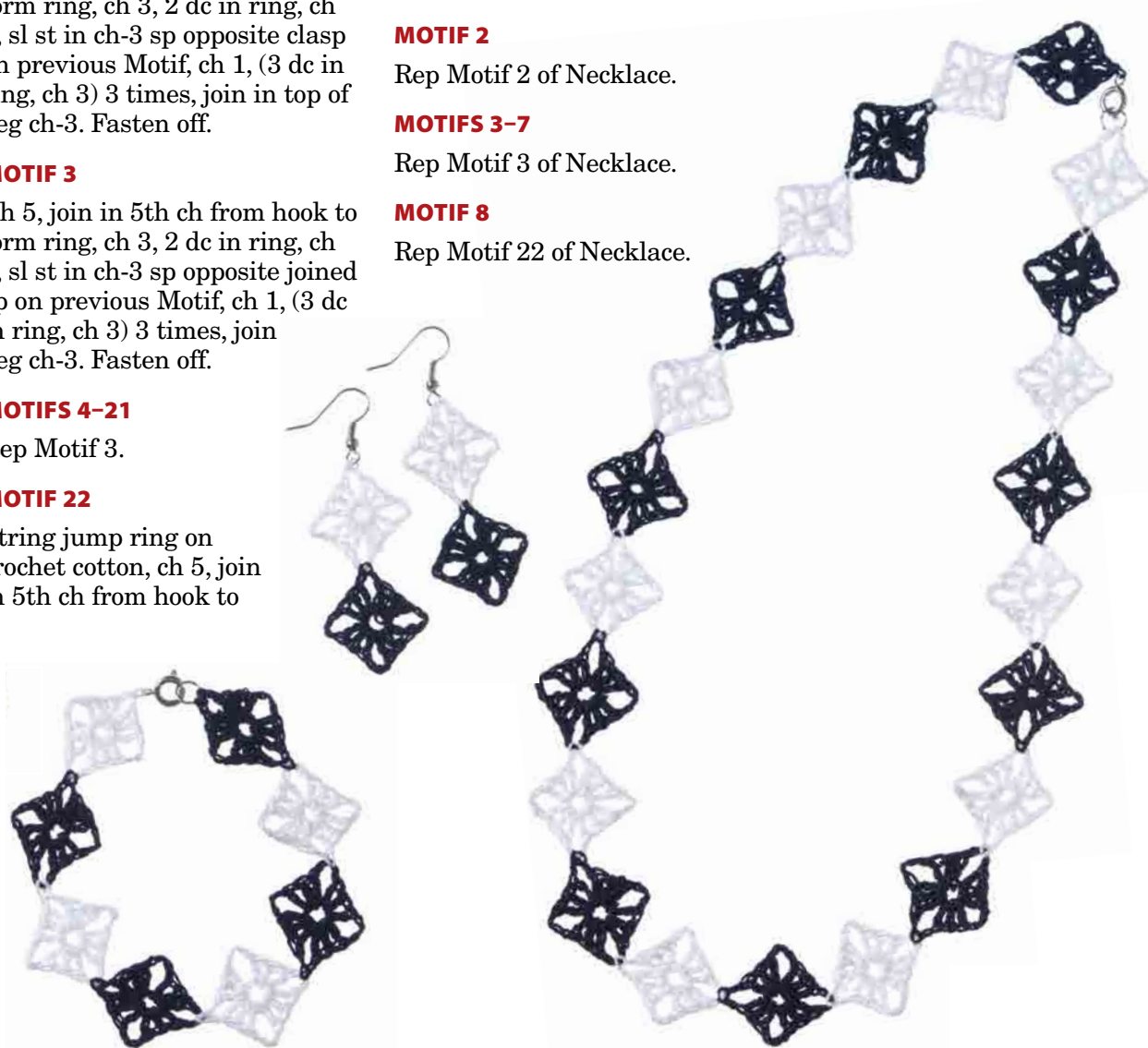
Make 2.

EAR WIRE MOTIF

Using ear wire in place of clasp, with white, rep Clasp Motif of Necklace.

MOTIF 2

With black, Rep Motif 2 of Necklace. **CW**



Bureau Bag

Design by Ellen Gormley

SKILL LEVEL

■ ■ ■ □ INTERMEDIATE

FINISHED SIZE

6 inches x 6½ inches, after folding

MATERIALS

- Aunt Lydia's Fashion Crochet size 3 crochet cotton (150 yds per ball):
 - 1 ball each #65 warm teal and #264 lime
- Size D/3/3.25mm crochet hook or size needed to obtain gauge
- Tapestry needle

GAUGE

24 dc = 4 inches; 8 rows = 4 inches

PATTERN NOTES

Weave in loose ends as work progresses.

Join with slip stitch as indicated unless otherwise stated.

Chain-2 at beginning of row counts as first double crochet unless otherwise stated.

SPECIAL STITCHES

Space (sp): Ch 2, sk next 2 sts, dc in next st **OR** ch 2, sk next ch sp, dc in next st.

Beginning block (beg block): Ch 2, dc in each of next 3 sts.

Ending block (end block): Dc in each of next 2 chs or sts and in top of beg ch-2.

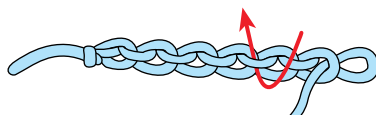
Block: Dc in each of next chs or 3 sts **OR** 2 dc in next ch sp, dc in next dc.

BAG

FRONT FILET PANEL

Row 1 (RS): With lime, ch 42, working in **back bar of ch** (see illustration), dc in 4th ch from hook and in each of next

2 chs (beg 3 sk chs and first 3 dc count as beg block), **block** (see *Special Stitches*) 11 times, **end block** (see *Special Stitches*), turn. (13 blocks)



Back Bar of Chain

Row 2: Beg block (see *Special Stitches*), **sp** (see *Special Stitches*) 11 times, end block, turn. (2 blocks, 11 sps)

Rows 3–13: Work according to chart. At end of last row, fasten off. (13 blocks)

BODY & BACKGROUND

Row 1 (RS): With warm teal, ch 42, dc in 4th ch from hook (3 sk chs count as first dc), dc in each rem ch across, turn. (40 dc)

Row 2: Ch 2, dc in each of next 39 dc, turn.

Rows 3–13: Rep row 2.

Row 14: With WS of Front Filet Panel row 1 held tog against current row on Background,

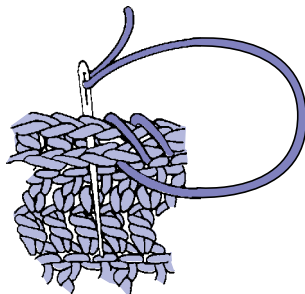


This pretty little bag is ideal for keeping jewelry, makeup, lingerie, coupons and more neat and safe.

Row 36: Ch 1, sc in each of next 19 sc, 10 sc in ch-7 sp, sc in each of next 19 sc. Fasten off. (48 sc)



With 18-inch length of lime and yarn needle, working through 3 thicknesses, whipstitch sides of folded Bag tog. Repeat for the 2nd side.

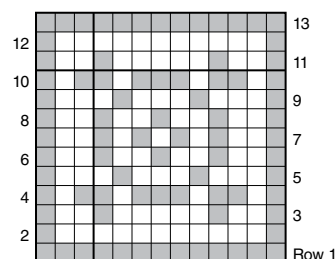


Whipstitch Edges

Thread yarn needle with rem length, weave yarn through rnd 1 and secure. Sew Button centered over rows 6 and 7 of Body and Background. Fasten off. **CW**



☒ Block
☐ Sp



Note: Use **beg block** (see Special Stitches) and **end block** (see Special Stitches) in place of block at beginning and end of each row.

Aromatherapy Eye Pillow

Design by Camille Jacks Morgan

SKILL LEVEL

■ ■ ■ ■ EASY

FINISHED SIZE

3½ x 8 inches

MATERIALS

- Lily Sugar'n Cream Super Size medium (worsted) weight cotton yarn (4 oz/200 yds/113g per ball): 1 ball #18011 softly taupe
- Size H/8/5mm crochet hook or size needed to obtain gauge
- Size 19 (15mm) knitting needle
- Yarn needle
- 4½ x 9-inch pieces muslin: 2
- ¾-inch shell buttons: 4
- 1 cup flaxseeds
- ¼ cup dried lavender flowers
- 2 drops lavender essential oil
- Small bowl
- Sewing needle and thread



GAUGE

4 groups = 4 inches; 4 rows = 4 inches



A removable insert filled with flaxseed can be chilled to give this little pillow soothing effects for a headache or tired eyes.

PATTERN NOTES

In broomstick lace, the right side (RS) always faces you and each row consists of 2 passes. In the first pass, loops are placed on the knitting needle as you work from left to right. This is the loop pass (lp pass). In the 2nd pass, the loops are worked off the needle as you work from right to left. This is the crochet pass.

SPECIAL STITCHES

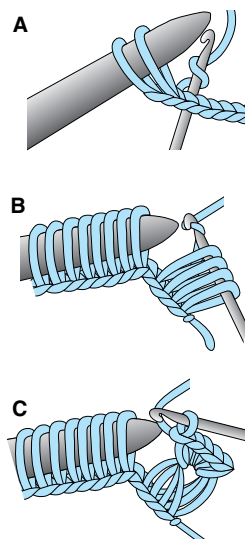
Loop pass stitch (lp pass st): Insert hook into indicated place, pull up lp and place on knitting needle (see *Broomstick Lace illustration A*).

Crochet pass stitch (crochet pass st): Insert hook through 4 indicated lps on knitting needle, slip lps off needle, yo, pull up lp under 4 lps, (see *Broomstick Lace illustration B*), yo, pull through all lps on hook (see *Broomstick Lace illustration C*).

PILLOW

COVER

Row 1 (lp pass row): With size H hook, ch 16, place last lp made on knitting needle, **lp pass st** (see *Special Stitches*) in next ch and in each rem ch across, **do not turn** (see *Pattern Notes*). (16 lps on needle)



Broomstick Lace (4 loop)

Continued on page 58

Nine-Patch Pillow

Design by Katherine Eng

SKILL LEVEL

EXPERIENCED

FINISHED SIZE

14 inches square

MATERIALS

- Red Heart Super Saver medium (worsted) weight acrylic yarn (7 oz/364 yds/198g per skein):
3 oz #512 turqua
2½ oz #656 real teal
2 oz #885 delft blue
1½ oz each #400 gray heather and #528 medium purple
- Size J/10/6mm crochet hook or size needed to obtain gauge
- Yarn needle
- 14-inch pillow form



GAUGE

1 small square = 1½ inches;
patch = 3¼ inches

PATTERN NOTES

Weave in loose ends as work progresses.

Join with slip stitch as indicated unless otherwise stated.

Work from bottom to top.

Row 1 of each Square and Patch is right side.

When working in foundation chains, always leave last chain unworked for joining.

PILLOW

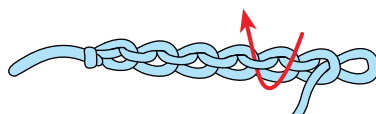
Make 2.

PATCH 1

Square 1

Row 1: With gray heather, ch 7, working in **back bar of ch**

(see illustration), sc in 2nd ch from hook, [ch 1, sk next ch, sc in next ch] twice, turn. (3 sc, 2 ch-1 sps)

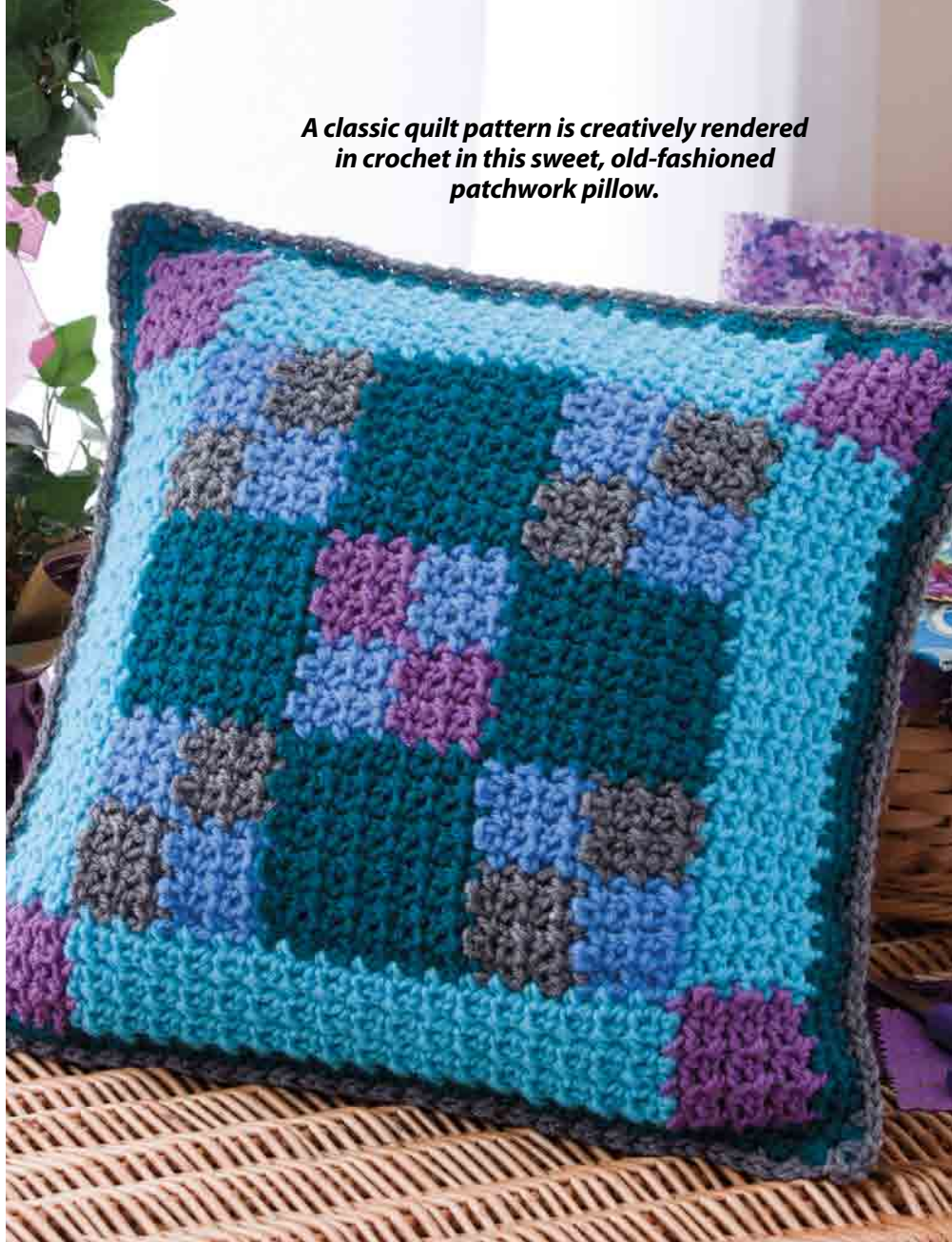


Back Bar of Chain

Row 2: Ch 1, sc in first sc, [ch 1, sk next ch-1 sp, sc in next sc] twice, turn.

Rows 3–5: Rep row 2. At the end of row 5, fasten off.

A classic quilt pattern is creatively rendered in crochet in this sweet, old-fashioned patchwork pillow.



Square 2

Join delft blue in 6th ch of Square 1, ch 7.

Row 1: Working in back bar of ch, sc in 2nd ch from hook, [ch 1, sk next ch, sc in next ch] twice, turn. (3 sc, 2 ch-1 sps)

Rows 2–5: Rep row 2 of Square 1, sl st to rows 3, 4 and 5 of previous Square. At the end of row 5, **do not fasten off**.

Square 3

Row 1: Working across top of Square 1, ch 1, sc in first sc, [ch 1, sk next ch-1 sp, sc in next sc] twice, turn.

Rows 2–5: Rep row 2 of Square 1. At the end of row 5, fasten off.

Square 4

Draw up lp of gray heather in first sc at top of Square 2, ch 1, work in pattern st for 5 rows, sl st to rows 1, 2, 3, 4 and 5 of Square 3. Fasten off.

PATCH 2

Row 1: With real teal, draw up a lp in first sc of Square 4, ch 1, sc in same sc, [ch 1, sk next ch-1 sp, sc in next sc] twice, ch 1 over seam, sc in next sc, [ch 1, sk next ch-1 sp, sc in next sc] twice, turn. (6 sc, 5 ch-1 sps)

Rows 2–10: Ch 1, sc in next sc, [ch 1, sk next ch-1 sp, sc in next sc] 5 times, turn. Fasten off.

PATCH 3

Square 1

Row 1: Draw up lp of gray heather in 4th sc of row 10 of Patch 2, ch 1, sc in same sc as beg ch-1, [ch 1, sk next ch-1 sp, sc in next sc] twice, turn. (3 sc, 2 ch-1 sps)

Rows 2–5: Ch 1, sc in first sc, [ch 1, sk next ch-1 sp, sc in next sc] twice, turn. At end of row 5, fasten off.

Square 2

Row 1: Draw up lp of delft blue in first sc of Patch 2, ch 1 sc in first sc, [ch 1, sk next ch-1 sp, sc in next sc] twice, turn.

Rows 2–5: Rep rows 2–5 of Patch 1, Square 2.

Square 3

Rows 1–5: Rep rows 1–5 of Patch 1, Square 3.

Square 4

Rep Patch 1, Square 4.

PATCH 4

Row 1: With real teal, ch 13 from 6th ch of Patch 1, Square 2

and work as for Patch 2, sl st to 10 rows of Patch 1. Fasten off.

CENTER PATCH 5

Work as for Patch 3 using delft blue for Squares 1 and 4, and medium purple for Squares 2 and 3.

PATCH 6

Work as for Patch 2 across top of Patch 5, sl st to 10 rows of Patch 3.

PATCH 7

Work as for Patch 1, ch from 12th ch of Patch 4 and sl st to 10 rows of Patch 4.

PATCH 8

Work as for Patch 2, sl st to 10 rows of Center Patch 5.

PATCH 9

Rep as for Patch 3, sl st to 10 rows of Patch 6.

WEDGE 1

Row 1 (RS): Working across top, draw up a lp of turqua in first corner sc of Patch 9, ch 1, working ch 1 over each joining seam, sc in first sc, *[ch 1, sk next ch-1 sp, sc in next sc] twice, ch 1, sk joining seam, sc in next sc, [ch 1, sk next ch-1 sp, sc in next sc] twice**, ch 1, sk next joining seam, sc in next sc, [ch 1, sk next ch-1 sp, sc in next sc] 5 times, ch 1, sk next joining seam, sc in next sc, rep from *, ending last rep at **, turn. (18 sc, 17 ch-1 sps)

Rows 2–7: Ch 1, sc in first sc, [ch 1, sk next ch-1 sp, sc in next sc] 17 times, turn. At the end of row 7, fasten off.

CORNER SQUARE 1

Row 1: Draw up lp of medium purple in end of row 1 of Wedge 1 (on right-hand edge), ch 1, sc in same row, [ch 1, sk next row, sc in next row] 3 times, turn. (4 sc, 3 ch-1 sps)

Rows 2–7: Ch 1, sc in first sc, [ch 1, sk next ch-1 sp, sc in next sc] 3 times, turn. At the end of row 7, fasten off.

WEDGE 2

Row 1: Working across right-hand edge, draw up lp of turqua in bottom ch of Patch 7, ch 1, sc in same ch, [ch 1, sk 1 row, sc in next row] 15 times, sl st to row 1 of Corner Square 1, sl st in row 2, turn. (16 sc, 15 ch-1 sps)

Row 2: Ch 1, sc in first sc, [ch 1, sk next ch-1 sp, sc in next sc] 15 times, turn.

Row 3: Ch 1, sc in first sc, [ch 1, sk next ch-1 sp, sc in next sc] 15 times, sl st to next row of Corner Square 1, sl st in next row, turn. (16 sc, 15 ch-1 sps)

Rows 4–7: [Rep rows 2 and 3 alternately] twice. At the end of row 7, fasten off.

WEDGE 3

Work same as Wedge 1 across bottom, working in chs instead of sc.

CORNER SQUARE 2

Row 1: Draw up lp of medium purple in end of last row of Wedge 3 on left-hand edge, ch 1, sc in each of same 7th row, ch 1, sk next row, sc in end of next row] 3 times, sl st to row 1 of Wedge 2, sl st in next row, turn. (4 sc, 3 ch-1 sps)

Row 2: Ch 1, sc in first sc, [ch 1, sk next ch-1 sp, sc in next sc] 3 times, turn.

Row 3: Ch 1, sc in first sc, [ch 1, sk next ch-1 sp, sc in next sc] 3 times, sl st to next row of Wedge 2, sl st in next row, turn.

Rows 4–7: [Rep rows 2 and 3 alternately] twice. At the end of row 7, fasten off.

Continued on page 63

Get ^{up} to \$10,000.00 in Life Insurance

**no matter what your
health and at rates
that never go up!**

**Good news in today's
economy for people
ages 45 to 85.***



Consumers want the best value in today's challenging times. Their life insurance is no exception. Whether you need funds to help pay your final expenses or just want to strengthen your current coverage, *United of Omaha Life Insurance Company* and *Companion Life Insurance Company* in New York have the right protection . . . priced right for you.

**Take advantage of the features
of this Easy Way® Whole Life
Insurance Policy:**

- ◆ **Guaranteed Acceptance**
with no health questions asked
- ◆ **Full Coverage**
for people aged 45 to 85
- ◆ **Benefits do not decrease**
due to age or changing health
- ◆ **Coverage Guaranteed**
policy cannot be cancelled
- ◆ **Builds cash value**

Call for your FREE Enrollment Packet Today!

**Affordable monthly premiums
will never increase, guaranteed.**

	\$10,000.00		\$7,000.00		\$5,000.00		\$3,000.00	
AGE	Male	Female	Male	Female	Male	Female	Male	Female
45-49	\$32.50	\$27.00	\$23.05	\$19.20	\$16.75	\$14.00	\$10.45	\$8.80
50-54	\$36.00	\$30.00	\$25.50	\$21.30	\$18.50	\$15.50	\$11.50	\$9.70
55-59	\$45.00	\$37.50	\$31.80	\$26.55	\$23.00	\$19.25	\$14.20	\$11.95
60-64	\$55.00	\$42.00	\$38.80	\$29.70	\$28.00	\$21.50	\$17.20	\$13.30
65-69	\$66.00	\$51.00	\$46.50	\$36.00	\$33.50	\$26.00	\$20.50	\$16.00
70-74	\$89.00	\$69.00	\$62.60	\$48.60	\$45.00	\$35.00	\$27.40	\$21.40
75-79	\$121.00	\$98.00	\$85.00	\$68.90	\$61.00	\$49.50	\$37.00	\$30.10
80-85	\$166.00	\$139.50	\$116.50	\$97.95	\$83.50	\$70.25	\$50.50	\$42.55

In NY and OR please call for rates.

FREE Enrollment Packet!
CALL 1-800-374-4382

There's no obligation so call today.



UNITED OF OMAHA LIFE INSURANCE COMPANY
COMPANION LIFE INSURANCE COMPANY
MUTUAL of OMAHA AFFILIATES

www.MutualDirectLife.com

This is a solicitation of insurance, an agent may contact you. **These policies contain benefits, reductions, limitations, and exclusions to include a reduction in death benefits during the first two years of policy ownership.** In NY, during the first two years, 110% of premiums will be paid. EASY WAY Whole Life Insurance is underwritten by United of Omaha Life Insurance Company, Omaha, NE, which is licensed nationwide except NY. Life insurance policies issued in NY are underwritten by Companion Life Insurance Company, Hauppauge, NY. Each company is responsible for its own financial and contractual obligations. Policy Form ICC11L057P or state equivalent (in FL: 7722L-0505; in NY: 827Y-0505; in OR: 7736L-0505). Not available in all states.
*Age eligibility varies in some states.

AFN42302_0210

Four-Squares Baby Blanket

Design by Kim Biddix
for Caron International

SKILL LEVEL

■ ■ ■ ■ ■ INTERMEDIATE

FINISHED SIZE

46 inches square

MATERIALS

- Caron Simply Soft medium (worsted) weight acrylic yarn (6 oz/315 yds/170g per skein):
3 skeins #9701 white (A)
1 skein each #0003 pistachio (B), #9755 sunshine (C) and #0016 melon (D)
- Size H/8/5mm crochet hook or size needed to obtain gauge
- Yarn needle



GAUGE

11 sts = 3 inches; Square =
21 inches square

PATTERN NOTES

Weave in loose ends as work progresses.

Join with slip stitch as indicated unless otherwise stated.

Chain-2 at beginning of row counts as first half double crochet unless otherwise stated.

Chain-3 at beginning of row counts as first double crochet unless otherwise stated.

Chain-4 at beginning of row counts as first double crochet and chain-1 unless otherwise stated.

SPECIAL STITCH

Treble crochet cross-stitch (tr cross-st): Sk next st, tr in next st, working around tr just made, tr in previously sk st.



Four large mitered squares are joined to form the interesting striped sections in this colorful blanket.

SQUARE

Make 4.

CORNER SQUARE

Rnd 1 (RS): With A, ch 4, 3 dc in 4th ch from hook (*beg 3 sk chs count as first dc*), [ch 2, 4 dc in same 4th ch from hook] 3 times, ch 2, **join** (*see Pattern Notes*) in 4th ch of beg ch-4. (16 dc, 4 ch-2 sps)

Rnd 2: Ch 3 (*see Pattern Notes*),

[dc in each dc across to ch-2 sp, (2 dc, ch 2, 2 dc) in ch-2 sp (*corner*)] 4 times, join in top of beg ch-3. (32 dc, 4 ch-2 sps)

Rnd 3: Rep rnd 2. Fasten off. (48 dc, 4 ch-2 sps)

SIDE ROWS

Row 4 (RS): Now working in rows, working in **back lps** (*see Stitch Guide*), join B with sc in any corner ch-2 sp, sc in each st across to next corner ch-2 sp,

(2 sc, ch 2, 2 sc) in corner ch-2 sp, sc in each st across to next corner ch-2 sp, sc in corner ch-2 sp, **change color** (see *Stitch Guide*) to C, leaving rem sts unworked, turn. (30 sc, ch-2 corner sp)

Row 5: Ch 4 (counts as first tr), [tr cross-st (see *Special Stitch*)] across to corner ch-2 sp, (2 tr, ch 2, 2 tr) in corner ch-2 sp, [tr cross-st] across to last st, tr in last st, change color to B, turn. (34 tr, ch-2 corner sp)

Row 6: Working in back lp of each st, ch 1, sc in each st across to corner ch-2 sp, (2 sc, ch 2, 2 sc) in corner ch-2 sp, sc in each of next 17 sts, change color to A. (38 sc, ch-2 corner sp)

Row 7: Ch 2 (see *Pattern Notes*), hdc in each st across to corner ch-2 sp, (2 hdc, ch 2, 2 hdc) in corner ch-2 sp, hdc in each of next 19 sts, turn. (42 hdc, ch-2 corner sp)

Row 8: Working in back lp of each st, ch 1, sc in each st across to corner ch-2 sp, (2 sc, ch 2, 2 sc) in corner ch-2 sp, sc in each of next 21 sts, turn. (46 sc, ch-2 corner sp)

Row 9: Ch 4 (see *Pattern Notes*), sk next st, dc in next st, [ch 1, sk next st, dc in next st] across to corner ch-2 sp, ch 1, (dc, ch 2, dc) in corner ch-2 sp, ch 1, dc in next st, [ch 1, sk next st, dc in next st] across, turn. (26 dc, 24 ch-1 sps, ch-2 corner sp)

Row 10: Rep row 6. (54 sc, ch-2 corner sp)

Row 11: Ch 1, sc in each of first 2 sts, [bpdc (see *Stitch Guide*) around next st, sc in next st] across to 1 st before corner ch-2 sp, sc in next st, (sc, ch 2, sc) in corner ch-2 sp, sc in next 2 sts, [bpdc around next st, sc in next st] across to last st, sc in last st, change color to D, turn. (56 sts, ch-2 corner sp)

Row 12: Ch 3, dc in each st across to corner ch-2 sp, (dc,

ch 1, dc) in corner ch-2 sp, dc in each st across, change color to B, turn. (58 dc, ch-1 corner sp)

Row 13: Ch 1, sc in first st, working in back lps, sc in each st across to corner ch-1 sp, (sc, ch 1, sc) in corner ch-1 sp, sc in each st across to last st, working in both lps, sc in last st, change color to D, turn. (60 sc, ch-1 corner sp)

Row 14: Ch 3, working in back lps, dc in each st across to corner ch-1 sp, (dc, ch 1, dc) in corner ch-1 sp, dc in each st across, change color to A, turn. (62 dc, ch-1 corner sp)

Rows 15–19: Rep rows 7–11. At end of row 19, change color to B. (80 sts, ch-1 corner sp)

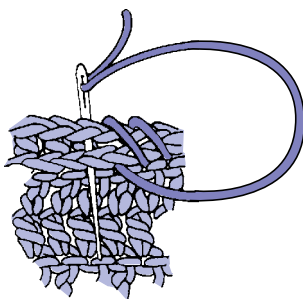
Row 20: Ch 1, sc in first st, working in back lps, sc in each st across to corner ch-2 sp, (sc, ch 2, sc) in corner ch-2 sp, sc in each st across to last st, working in both lps, sc in last st, change color to C, turn. (82 sc, ch-2 corner sp)

Rows 21–36: Rep rows 5–20.

Rows 37–45: Rep rows 5–14. At the end of row 45, fasten off.

ASSEMBLY

With Corner Square at outer edge, arrange Squares 2 x 2, **whipstitch** (see *illustration*) Squares tog.



Whipstitch Edges

BORDER

Rnd 1 (RS): Join A in any corner ch-1 sp, ch 2, (hdc, ch 2, 2 hdc) in same ch-1 sp, [hdc evenly sp across side edge to next corner ch-1 sp, (2 hdc, ch 2, 2 hdc)

in corner ch-1 sp] 3 times, hdc evenly sp across last side edge, join in beg ch-2.

Rnd 2: Ch 1, working in back lps, sc in each hdc around, working (2 sc, ch 2, 2 sc) in each corner ch-2 sp, join in beg sc.

Rnd 3: Ch 1, sc in each sc around, working (sc, ch 1, sc) in each corner ch-2 sp, join in beg sc. Fasten off. **EW**

Crochet Village

Order this pattern and much, much more at...

www.CrochetVillage.com

Fund Raising

Your Club, Church, School, Team or Youth Group will work directly with the manufacturer to make **40% profit**. Your supporters receive a tremendous value on remarkable kitchen knives, utensils and gift sets (quick mixes, cookbooks, soy wax candles and stoneware too)!

Rada Cutlery's reputation for **Made in the USA** quality is well known. We have made and sold over 130,000,000 knives since 1948! Our proven fund raising system guarantees your success.

Request your **FREE** catalog and information packet:

1-800-311-9691
or **www.RadaCutlery.com**
NOTE: Dept **A12CRO**

Find out why our customers say that "Rada knives sell themselves!"

RADA CUTLERY
"A Cut Above The Rest"

There was water leakage in the storage area where I kept all of my crafting items, which caused a lot my items to be damaged or ruined. Some of the items that I lost and would love to have again are an easy slipper pattern book, a pattern for a crocheted wedding dress, a pattern from a kit that featured two afghans—one with a kitten and the other with a landscape of a lighthouse—and lastly, a pattern book for prayer shawls. If anyone has these items or anything extra they would like to share so I can continue to crochet for charity, it would be greatly appreciated. Thanks for any help. *Pam Smith-Schad, 16 E. Corydon St. Apt. 1, Bradford, PA 16701*

I am crocheting the Quick Baby Set from the November 2008 issue and am having problems with finishing it. I am having problems with the back of the jacket, and I'm not sure if I'm missing something or just

not understanding it. I could use any help! Thanks. *Carmela Simpson, 5320 Manchester Drive, Suitland, MD 20746*

Does anyone know of any charities that I could begin crocheting items for? Also, if anyone has any extra patterns or supplies that they need to get rid of, I would gladly use them. Thanks so much! *Dianna Espinoza, 1114 Wade Hampton St., Benbrook, Texas 76126*

I am looking for some yarn that I purchased years ago from Kmart, and now it has been discontinued. I was using it to make a vest, but I need some extra to be able to complete the project. If anyone could help me I would be glad to pay for the yarn. The yarn is Natura BURLEE Rainbow and the color is midnight radiance 200, dye lot 27, article No. 4100; it was made by National Yarn Crafts in New York. I need approximately two skeins to finish the project, but would take more if you have it. Thank you. *Lorene Armstrong, 524 S. Sixth St., Thayer, MO 65791*

I am looking for a round pineapple crocheted tablecloth pattern that is crocheted in one

piece and doesn't have motifs. Also, could anyone help me with a pineapple dresser scarf that was in a past *Crochet World* magazine? Lastly, does anyone have a pattern for a mantel scarf that is one piece and with no motifs? I would appreciate any help! *Lois Hoefer, 725 W. Church St., Albion, NE 68620*

Does anyone have a pattern for the Angel Baby Blanket that was in a Christmas issue of *Crochet World*? I would really be thankful if someone could find it for me. Thanks so much! *Patsy Walker, 22 Fleetwood Drive, Millington, TN 38053*

I am looking for an adult-size crochet or easy knit pattern of a hat with cat ears on top, with or without the cat face, and a John Deere plastic canvas tissue box cover. Thank you for any help. *Peggy Drinkwater, 294 Spring Bridge Road, Greenbush, ME 04418*

There are two patterns that I am looking for; one is Christmas Creations Santa's Boot, which was in *Annie's Favorite Crochet* magazine in August 2005. The other project, Stars and Stripes, is a crocheted doily and was published in *Crochet Fantasy* magazine in August 2001. I would be happy to pay for the postage, and I will appreciate any help. *Louise Chabot, 162 Cooper Road, Northbridge, MA 01534*

Several years ago a friend gave me a pattern for a doily with hearts around the edge. I was going to make it this February and couldn't find the pattern anywhere. I was hoping someone would have a copy. I would be glad to exchange some of my beautiful pineapple doily patterns. Thanks. *Rita Krug, 7552 211th Road, Atlanta, KS 67008*

Looking for special crochet patterns or yarn? Let the readers of *Crochet World* help you locate them! Swap crochet patterns and tips, and find new friends. Send your requests to:

Crochet Connections, 306 East Parr Road, Berne, IN 46711

We are not able to publish all letters that we receive because of space limitations. Letters may be edited for clarity.

We will not knowingly publish requests for copyrighted patterns from other publications, television, cartoon or comic book trademark characters.

Note: It is legal to exchange or sell the following copyrighted material: magazines, books and pattern books and/or actual pages from those publications. However, it is illegal to exchange or sell photocopies, Internet files, digital scans or any other reproductions of copyrighted material.

Realize that your request may draw a large response, requiring considerable postage to reply to all who contact you. When responding to someone, be sure to include a self-addressed stamped envelope (SASE) and write legibly.

BACK TALK!

Letters from our readers

Follow the Stars Home

To make the Follow the Stars Home doily from *Crochet World's* June 2011 issue, I used Aunt Lydia's Classic Crochet size 10 crochet cotton. The colors I used were wasabi and hot pink, and the steel hook size was 8/1.50mm. I love *Crochet World* magazine because it offers a wide variety of projects inspired by both the past and present. Using bright colors to make vintage-inspired patterns



is a way that I like to bring the past into the present. I get to have the best of both worlds with a modern vintage piece

when it is finished. This will most likely be a gift for someone with a taste for hot pink!

Rachel Gregory via email

Bright New Double-Duty Lamp From Daylight

The Naturalight LED Lamp & Flashlight from Daylight is a two-in-one design. It can be used for recreation, travel and emergencies. It is

light-weight, portable and great for using at home, in the car and for hobbies.

Naturalight can give up to six hours of bright

light and is energy-efficient. The Full Spectrum LEDs use 80 percent less energy than incandescent bulbs and never need to be replaced. The Naturalight LED Lamp & Flashlight requires just three AA batteries (not included). A convenient hand strap is also included.

To read more details about this product, please go to www.daylightcompany.com.



At Home



Flashlight



PRODUCT REVIEW

Rickrack & Roses Sweater

Continued from page 7

shell, hold next 2 inc shells with WS tog, sc in center dc of both inc shells (*sleeve joining made*)*, rep from * to * once, [shell in sc, sc in center of shell] 3 [4] times, shell in last sc, sc in center of half shell, turn. (16 [20] shells)

Size 18 Months Only

Ch 3, 2 dc in same st as ch-3, *[sc in center of shell, shell in next sc] across to inc shell, hold next 2 inc shells RS tog, sc in center dc of both inc shells (*sleeve joining made*), shell in

sc*, rep from * to * once, sc in center of shell, [shell in sc, sc in center of shell] across, ending with half shell in last sc, turn. ([17] shells)

All Sizes

Ch 1, sc in center of half shell, shell in next sc, [sc in next shell, shell in next sc] across, ending with sc in center of half shell, turn.

BODY

Row 1: Ch 3, 2 dc in same st as ch-3, sc in next shell, [shell in next sc, sc in next shell] across, ending with half shell in last sc, turn.

Row 2: Ch 1, sc in center of half shell, shell in next sc, [sc in next shell, shell in next sc] across, ending with sc in center of half shell, turn.

Rep rows 1 and 2 until Body measures 6½ [7, 7½] inches, ending with row 1. Fasten off.

EDGING

With RS facing, **join** (see *Pattern Notes*) B in left front at neckline edge, (ch 1, sc, ch 2, sc) in same st as joining, *ch 2, sl st in side of sc, ch 2, (sc, ch 2, sl st in top of last sc) in side of half shell*, rep from * to * down left front, ch 2, sl st in last sc, shell in side of corner half shell, **[lg double V-st** (see *Special Stitches*) in sc, sc in center of shell] across bottom edge, ending with shell in side of corner half shell, sl st in side of first sc, ch 2, (sc, ch 2, sl st in top of last sc) in side of half shell, rep from * to * up right front, ending with ch 2, (sc, ch 9, sc) in top corner (*button lp*), change to A in last sc. Fasten off B.



Working on opposite side of foundation ch, sc in each st across neckline, working (hdc, dc, hdc) in the foundation ch of each of the 4 corner inc shells, join in beg sc. Fasten off.

SLEEVE

Make 2.

Rnd 1: With RS facing, join A in underarm joining, ch 3, 2 dc in same st, sk next dc, sc in next dc, [half shell in next sc, sc in center of next shell] around to last sc, half shell in last sc, sk next dc, sc in next dc, join in 3rd ch of beg ch-3, turn.

Rnd 2: Ch 1, sl st in first sc, ch 3, 2 dc in same st, sc in center of half shell, [half shell in next sc, sc in center of next half shell] around, join in 3rd ch of beg ch-3, turn.

Rep rnd 2 until Sleeve measures 5½ [6, 6½] inches from joining. Fasten off.

EDGING & CUFF

Rnd 1: With RS facing, join B with sc in center of any half shell, **double V-st** (see *Special Stitches*) in next sc, [sc in center of half shell, double V-st in next sc] around, join in beg sc. Fasten off.

WINNER'S CIRCLE CONTEST

We know many talented readers enjoy designing their own patterns, from tablecloths to toys. Why not let others enjoy your pattern and earn a little cash in the process? We'll pay top dollar for your original crochet patterns. From those submitted, we'll choose a Winner's Circle prize-winning design.

Please send us the actual crocheted item(s), which will be photographed and returned to you. (Make sure you include return postage for the return of the item.)

Please email (editor@crochet-world.com) or write for our Designer's Guidelines, which provide necessary information when submitting designs.

All patterns submitted must be your own design and not a copy of another designer's pattern or copyrighted figures (Disney or Sesame Street characters, etc.).

Designs should be sent to:

**Winner's Circle
Crochet World
306 East Parr Road
Berne, IN 46711**



Rnd 2: Join A with sl st in any sc, (ch 3, 2 dc) in same st, [half shell in next sc] rep around, join in beg ch-3.

Rnd 3: Sl st to center of half shell, (**ch 5**—see *Pattern Notes*, dc) in same st, **V-st** (see *Special Stitches*) in center of each half shell around, join in 3rd ch of beg ch-5.

Rnd 4: Sl st in ch-2 sp, (ch 5, dc) in same ch-2 sp, V-st in ch-2 sp of each V-st around, join in 3rd ch of beg ch-5.

Next rnd: [Rep rnd 4] 0 [0, 1] time(s).

Last rnd: Ch 1, sc in each dc and work 1 sc in each ch-2 sp around, join in beg sc. Fasten off.

ROSE

Make 7.

With B, leaving 12-inch length at beg, ch 2, 4 sc in 2nd ch from hook. Working in **back lps** (see *Stitch Guide*) of each st and working rnds without joining, sc around, inc sts as needed to keep circle flat until circle

measures 1½ inches across, sl st in next sc, ch 1, turn. Working in rem lps, [sk next st, (hdc, ch 2, hdc) in next st, sk next st, sc in next st] around until rem free lps are used, ending at Rose center. Fasten off.

FINISHING

Thread yarn needle with rem length at beg of Rose, sew a Rose to each inc shell of row 1, center top of each Sleeve and center back of Yoke.

Sew button opposite button lp. **CW**

L'Astrée Scarf

Continued from page 8

Row 3: Ch 1, sc in first dc, *ch 3, sk next 3 sts, sc in next dc, rep from * across to beg ch-3, sc in 3rd ch of beg ch-3. (5 sc, 4 ch-3 sps)

Rows 4–74: [Rep rows 2 and 3 alternately] 36 times, ending last rep with row 2. At end of last row, fasten off.

FINISHING

Using yarn needle, weave in all ends. Block lightly, if desired.

FRINGE

*Cut 3 strands of yarn each 10 inches long. Hold all strands tog and fold in half. Working from front to back, insert hook through 1 ch sp or st at end of Scarf. Place folded end on hook and draw lp through. Thread ends of strands through lp and pull to tighten and secure. Trim ends. Rep from * 7 times to create 8 Fringe groups. Rep from * 8 times across opposite end to attach a total of 8 Fringe groups evenly sp across each end of Scarf.

BEADS

String beads on Fringe strands. Place at various positions on

Fringe and tie overhand knot below bead to secure. **CW**

The Storefront

Crochet World magazine is available at these fine stores:

ARIZONA

Village Wools
418 S. Beeline
Payson, AZ 85541

COLORADO

Brigitte Cornell Productions
7928 A Bayonet Circle
Colorado Springs, CO 80902
The Yarn Outlet LLC
416 S. Eighth St.
Colorado Springs, CO 80905

CONNECTICUT

Pamela Roose
386 Main St.
Middletown, CT 06457

GEORGIA

Ewe Knit
815 Cedar St.
Carrollton, GA 30117
The Guild
1109 E. Highway 80
Pooler, GA 31322

IOWA

Village Needlework
1123 Seventh Ave.
Marion, IA 52302
Beehive Crafts & Framing
404 Grand Ave.
Spencer, IA 51301

ILLINOIS

Twisted Stitches
423 N. Main St.
Saint Elmo, IL 62458
Lynda's Crafts Books & More
110 E. Pleasant St.
Taylorville, IL 62568

INDIANA

Yarn4ewe.com
7956 19th Road
Argos, IN 46501

KANSAS

The Creation Station
301E N. Meridian Road
Newton, KS 67114
Yarn Basket
703 N. Broadway St.
Pittsburg, KS 66762
Odd Balls Yarn Shop
2120 N. Woodlawn
Wichita, KS 67208

LOUISIANA

Country Yarns
182 Legg Loop
Pitkin, LA 70656

MISSOURI

Yarn Diva
10726 E. State Highway 76
Forsyth, MO 65653

NORTH CAROLINA

The Plaid Sheep Yarn Shop
127 Main St.
Canton, NC 28716
A Row of Purls
902 Brighton Road
Fayetteville, NC 28314

OKLAHOMA

Unwind, A Yarn Shop
632 E. Will Rogers Blvd.
Claremore, OK 74017
Sweetie Wray's Yarn Shop
Route 1 Box 88
Hitchcock, OK 73744

OREGON

Fabric Depot
700 S.E. 122nd Ave.
Portland, OR 97233

PENNSYLVANIA

Pooky Emporium
174 Lynn Lane
Cochran, PA 16314
Good's Store Distribution Center
165 Earland Drive
New Holland, PA 17557

TEXAS

The Yarn Barn
1275 CR 1635
Mount Pleasant, TX 75455

VIRGINIA

Yarn Cloud
13895 Hedgewood Drive
Woodbridge, VA 22193

WYOMING

The Fiber House
146 Coffeen Blvd
Sheridan, WY 82801

This autoshop listing is provided as a service to our readers and should not be considered an endorsement from Crochet World magazine.

Pansy Tea Light

Continued from page 9

group of Center, [7 dc in next ch-8 sp of Center, sl st in ch-3 sp of next shell on rnd 3 of Leaf, ch 1, 7 dc in same ch-8 sp as 7-dc group just made (*petal*), sc in 2nd dc of next 3-dc group of Center] twice, [(hdc, 2 dc, 2 tr, **tr fringe** (see *Special Stitches*), 2 tr, 2 dc, hdc) in next ch-8 sp of Center, sc in 2nd dc of next 3-dc group of Center] twice, join in 3rd ch of beg ch-3. Fasten off.

2ND PANSY

Center

Rep Center of First Pansy.

Petals

Join shaded purples in any ch-8 sp of Center, ch 3, 6 dc in same ch-8 sp as beg ch-3, sl st in ch-3

sp of any shell on rnd 3 of Leaf, ch 1, 7 dc in same sp as beg ch-3 (*petal*), sc in 2nd dc of next 3-dc group of Center, [7 dc in next ch-8 sp of Center, sl st in ch-3 sp of next shell on rnd 3 of Leaf, ch 1, 7 dc in same ch-8 sp as 7-dc group just made (*petal*), sc in 2nd dc of next 3-dc group of Center] twice, [(hdc, 2 dc, 2 tr, tr fringe, 2 tr, 2 dc, hdc) in next ch-8 sp of Center, sc in 2nd dc of next 3-dc group of Center] twice, ch 1, sl st in corresponding sc on First Pansy, join in 3rd ch of beg ch-3 on 2nd Pansy. Fasten off.

3RD PANSY

Center

Rep Center of First Pansy.

Petals

Join shaded purples in any ch-8 sp of Center, ch 3, 6 dc in same

ch-8 sp as beg ch-3, sl st in ch-3 sp of any shell on rnd 3 of Leaf, ch 1, 7 dc in same sp as beg ch-3 (*petal*), sc in 2nd dc of next 3-dc group of Center, [7 dc in next ch-8 sp of Center, sl st in ch-3 sp of next shell on rnd 3 of Leaf, ch 1, 7 dc in same ch-8 sp as 7-dc group just made (*petal*), sc in 2nd dc of next 3-dc group of Center] twice, ch 1, sl st in corresponding sc of First Pansy, [(hdc, 2 dc, 2 tr, tr fringe, 2 tr, 2 dc, hdc) in next ch-8 sp of Center, sc in 2nd dc of next 3-dc group of Center] twice, ch 1, sl st in corresponding sc on First Pansy, join in 3rd ch of beg ch-3 on 2nd Pansy. Fasten off.

FINISHING

Insert tea light. Connect first and last large petals of each Pansy with a dot of fabric glue, holding tog until glue sets. **CW**

Aromatherapy Eye Pillow

Continued from page 48

Row 1 (crochet pass row):

Insert hook under the first 4 lps on needle, hold the lps tog as 1 group, slip all 4 lps off hook, yo, pull up lp under all lps, yo, pull through lp on hook (*forms ch-1 to lock edge*), work 4 sc in center sp of same group, ***crochet pass st** (see *Special Stitches*) in next 4 lps on needle, work 3 sc in center sp of group just made, rep from * across, do not turn. (16 sc)

Row 2 (lp pass row): Place last st from hook onto needle, *working from left to right, taking care not to twist lps, lp pass st in **back lp** (see *Stitch Guide*) only of next sc and each rem sc across, do not turn. (16 lps on needle)

Row 2 (crochet pass row): Rep row 1 crochet pass row.

Rows 3–19: Rep row 2 lp pass row and row 2 crochet pass row. At end of row 19 crochet pass row, fasten off.

COVER ASSEMBLY

Lay the finished piece flat with the RS facing. Fold the bottom edge up to row 18 (*RS facing inside*), leaving row 19 as the buttonhole flap. Using yarn needle and yarn, sew up the side seams. Fasten off.

Turn the Cover inside out. Fold down flap. Sew buttons across edge below flap so 4 broomstick-lace openings along row 19 will act as buttonholes.

INSERT

Place RS of 2 muslin pieces tog. Leaving a ¼-inch seam allowance, use sewing needle and thread to sew both long sides and 1 short end closed, leaving 1 short end open. Turn inside out.

In a small bowl, mix flaxseeds, lavender flowers and 2 drops of lavender essential oil. Pour into the opening of the muslin insert. Use sewing needle and thread to sew opening closed.

Place Insert into Cover. Button to close. **CW**



DIAMONDS VEST
BY SUSAN LOWMAN
IN SOUTH MAID CROCHET THREAD 10



FLORAL LACE GREETING CARD
BY CORA RATTLE
IN AUNT LYDIA'S CLASSIC CROCHET 10



FRILLS & FLOWERS
BY LORI ZELLER
IN AUNT LYDIA'S CLASSIC CROCHET 10



CROCHET MOTIF LOCKET
BY DEBRA ARCH



Crochet World®

10 FREE
Extra pages or more!



These extra crochet patterns and articles are our gift to you as a special thank you for being a loyal reader! And because there's more room on the Internet than in the printed pages of a magazine, we're able to give you this gift issue after issue at no charge!

Crochet-World.com/EXTRA

Just sign in with your e-mail address and you have full access to those extra patterns as long as the current issue is online! Newsstand buyers can sign in with the limited-time code CW4522.

Evening Star

Continued from page 11

ending last rep at **, join in 3rd ch of beg ch-3. (16 shells, 32 ch-4 sps, 128 tr cl)

Rnd 18: Beg shell, *ch 4, (sc, ch 3, sc) in each of next 7 ch-3 sps, ch 4**, shell in ch-3 sp of next shell, rep from * around, ending last rep at **, join in 3rd ch of beg ch-3. (16 shells, 32 ch-4 sps, 112 ch-3 sps, 224 sc)

Rnd 19: Sl st in next dc and in next ch-3 sp, ch 1, *(sc, ch 3, sc, ch 5, sc, ch 3, sc) in same ch-3 sp, ch 4, [(sc, ch 3, sc) in next ch-3 sp, (sc, ch 3, sc, ch 5, sc, ch 3, sc) in next ch-3 sp] 3 times, (sc, ch 3, sc) in next ch-3 sp, ch 4, rep from * around, join in first sc. Fasten off. (64 ch-5 sps, 192 ch-3 sps)

FINISHING

Weave in ends. Block if desired.

ACCENT DOILY

Rnds 1–5: Rep rnds 1–5 of Doily. (8 shells, 8 ch-7 sps, 16 ch-4 sps, 16 sc)

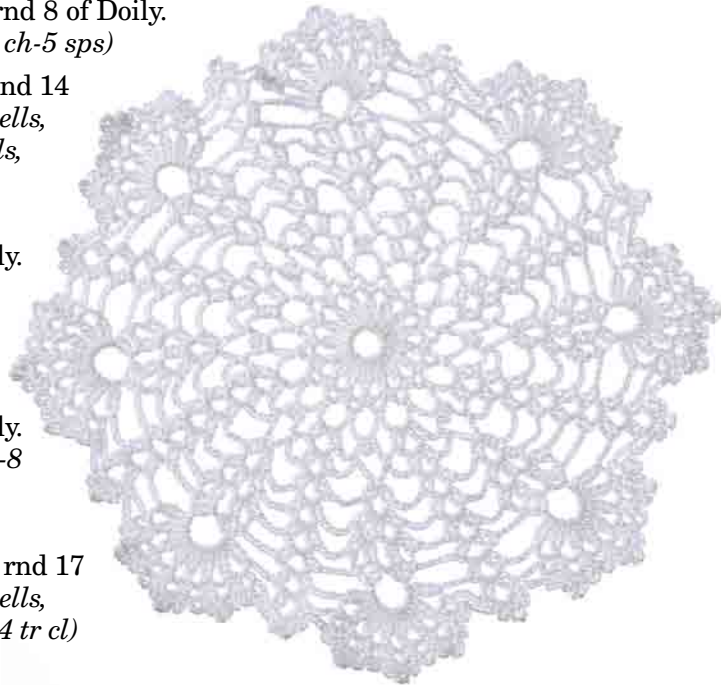
Rnd 6: Rep rnd 8 of Doily. (16 shells, 16 ch-5 sps)

Rnd 7: Rep rnd 14 of Doily. (8 shells, 8 double shells, 16 ch-4 sps)

Rnd 8: Rep rnd 15 of Doily. (24 shells, 16 ch-4 sps, 8 ch-2 sps)

Rnd 9: Rep rnd 16 of Doily. (8 shells, 8 ch-8 sps, 32 dc, 16 ch-4 sps)

Rnd 10: Rep rnd 17 of Doily. (8 shells, 16 ch-4 sps, 64 tr cl)



Rnd 11: Rep rnd 18 of Doily. (8 shells, 16 ch-4 sps, 56 ch-3 sps, 112 sc)

Rnd 12: Rep rnd 19 of Doily. (32 ch-5 sps, 96 ch-3 sps) **cw**

Starflower Table Topper

Continued from page 18

Rnd 50: Ch 6, [sk next ch-2 sp, tr in each of next 2 tr, ch 2] twice, *shell in next ch-2 sp, ch 2, [tr in each of next 2 tr, ch 2, sk next ch-2 sp] 3 times, sk next tr, tr in each of next 9 tr, ch 2, sk next tr, sk next ch-2 sp**, [tr in each of next 2 tr, ch 2, sk next ch-2 sp] 3 times, rep from * around, ending last rep at **, tr in next tr, join in 4th ch of beg ch-6. (600 tr)

Rnd 51: Ch 6, [sk next ch-2 sp, tr in each of next 2 tr, ch 2] 7 times, sk next ch-2 sp, sk next tr, *tr in each of next 7 tr, ch 2, sk next tr, sk next ch-2 sp**, [tr in each of next 2 tr, ch 2, sk next ch-2 sp] 7 times, tr in each of next 2 tr, ch 2, sk next ch-2 sp, sk next tr, rep from * around, ending last rep at **, tr in next tr, join in 4th ch of beg ch-6. (552 tr)

Rnd 52: Ch 6, [sk next ch-2 sp, tr in each of next 2 tr, ch 2] 3 times, shell in next ch-2 sp, ch 2, [tr in each of next 2 tr, ch 2, sk next ch-2 sp] 4 times, sk next tr, tr in each of next 5 tr, ch 2, sk next tr, sk next ch-2 sp**, [tr in each of next 2 tr, ch 2, sk next ch-2 sp] 4 times, rep from * around, ending last rep at **, tr in next tr, join in 4th ch of beg ch-6. (600 tr)

Rnd 53: Ch 6, [sk next ch-2 sp, tr in each of next 2 tr, ch 2] 9 times, *sk next ch-2 sp, sk next tr, tr in each of next 3 tr, ch 2, sk next tr, sk next ch-2 sp**, [tr in each of next 2 tr, ch 2, sk next ch-2 sp] 10 times, rep from * around, ending last rep at **, tr in next tr, join in 4th ch of beg ch-6. (552 tr)

Rnd 54: Ch 6, [sk next ch-2 sp, tr in each of next 2 tr, ch 2] 9 times, sk next ch-2 sp, sk next tr, tr in next tr, ch 2, sk next tr, sk next ch-2 sp, *[tr in each of

next 2 tr, ch 2, sk next ch-2 sp] 10 times, sk next tr, tr in next tr, ch 2, sk next tr, sk next ch-2 sp, rep from * around, ending with tr in next tr, join in 4th ch of beg ch-6. (480 tr)

Rnd 55: Sl st back 1 st to first st of 2-tr group, ch 4, 2 tr in sp between tr sts, tr in 2nd tr of same 2-tr group, sk next ch-2 sp, [tr in next tr, 2 tr in sp between tr, tr in next tr, sk next ch-2 sp] around, join in 4th ch of beg ch-4. (960 tr)

Rnd 56: Ch 3, 3-tr cl in next 3 tr, ch 6, [4-tr cl in next 4 tr, ch 6] around, join in 3rd ch of beg ch-3. (240 tr cl, 240 ch-6 sps)

Rnd 57: Ch 1, (4 sc, **picot**—see *Special Stitches*, 4 sc) in first ch-6 sp, (4 sc, picot, 4 sc) in each ch-6 sp around, join in beg sc. Fasten off.

Lightly starch and block. **cw**

Patchwork Puppy

Continued from page 13

Rnds 23–29: Sc in each st around.

Stuff Body with fiberfill.

Rnd 30: *Sc in each of next 5 sts, sc dec in next 2 sc, rep from * around. (36 sts)

Rnd 31: *Sc in each of next 4 sts, sc dec in next 2 sc, rep from * around. (30 sts)

Rnd 32: *Sc in each of next 3 sts, sc dec in next 2 sc, rep from * around. (24 sts)

Rnd 33: *Sc in each of next 2 sts, sc dec in next 2 sc, rep from * around. (18 sts)

Rnd 34: *Sc in next st, sc dec in next 2 sc, rep from * around. (12 sts)

Finish stuffing Body with fiberfill.

Rnd 35: [Sc dec in next 2 sts] around. Fasten off.

Draw up rem sts and sew closed. Sew Head to Body.

FRONT LEG

Make 2.

Rnds 1–3: Starting at foot with bright yellow, rep rnds 1–3 of Body. (18 sts at end of last row)

Rnd 4: *Sc in each of next 2 sts, 2 sc in next st, rep from * around. (24 sts)

Rnd 5: *Sc in each of next 3 sts, 2 sc in next st, rep from * around, join with sl st in first st. (30 sts)

Rnd 6: Ch 1, working in **back lps** (see *Stitch Guide*), sc in each st around.

Rnd 7: Working in both lps, sc in each st around.

Rnd 8: Sc in each of next 17 sts, [sc dec in next 2 sts] 3 times, sc in each of next 7 sts, join with sl st in first sc. Fasten off. (27 sts)

Rnd 9: Join spring green with sc in joining sl st of rnd 8, sc in each of next 13 sts, [sc dec in next 2 sts, sc in next st] 3 times, sc in each of next 4 sts. (24 sts)

Rnds 10–14: Sc in each st around. Leaving 16-inch length, fasten off at end of rnd 14.

Stuff Legs with fiberfill. Sew to Body.

BACK LEG

Make 2.

Rnds 1–14: Rep rnds 1–14 of Front Leg, using pretty 'n pink for foot section and blue for upper Leg.

Stuff Back Legs with fiberfill. Sew to Body.

TAIL

Rnd 1: Starting at tip with spring green, ch 2, 6 sc in 2nd ch from hook, **do not join**.

Rnd 2: Sc in each st around.

Rnd 3: *Sc in next st, 2 sc in next st, rep from * around. (9 sts)

Rnds 4–7: Sc in each st around.

Rnd 8: *Sc in each of next 2 sts, 2 sc in next st, rep from * around. (12 sts)

Rnds 9 & 10: Sc in each st around.

Rnds 11 & 12: Sl st in each of next 5 sts, hdc in each of next 7 sts, join with sl st in first st. Leaving 12-inch length, fasten off at end of rnd 12.

Stuff Tail with fiberfill. Sew to Body with tip pointing toward Head. **CW**

Crazy for Cupcakes

Continued from page 21

STRIPED CUPCAKE

CAKE

Note: Work with 2 strands held tog unless otherwise stated.

Row 1: With 2 strands white held tog (see *Note*), rep row 1 of Chocolate Cupcake Cake, **changing color** (see *Stitch Guide*) to hot green in last st, turn. Fasten off white.

Row 2: With hot green, rep row 2 of Chocolate Cupcake Cake, changing color to hot blue in last st, turn. Fasten off hot green.

Row 3: With hot blue, rep row 3 of Chocolate Cupcake Cake, changing color to white in last st, turn. Fasten off hot blue.

Rows 4–18: Working in established color pattern with 2 strands held tog, rep rows 4–18 of Chocolate Cupcake Cake.

Row 19: With white, rep row 4 of Chocolate Cupcake Cake. Fasten off.

FROSTING

Rows 1–14: With 2 strands hot blue held tog, rep rows 1–14 of Chocolate Cupcake Frosting.

Scallop Bottom Edge

Row 1: With 2 strands hot blue held tog, rep Chocolate Cupcake Scallop Bottom Edge.

SPRINKLE

Make 3 each hot blue & hot green, & 4 white.

Rnd 1: Rep rnd 1 of Chocolate Cupcake Sprinkle.

SPRINKLE ASSEMBLY

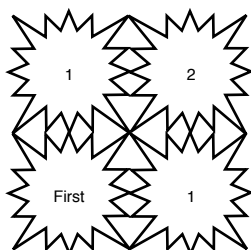
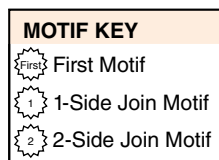
Rep as for Chocolate Cupcake.

CUPCAKE ASSEMBLY

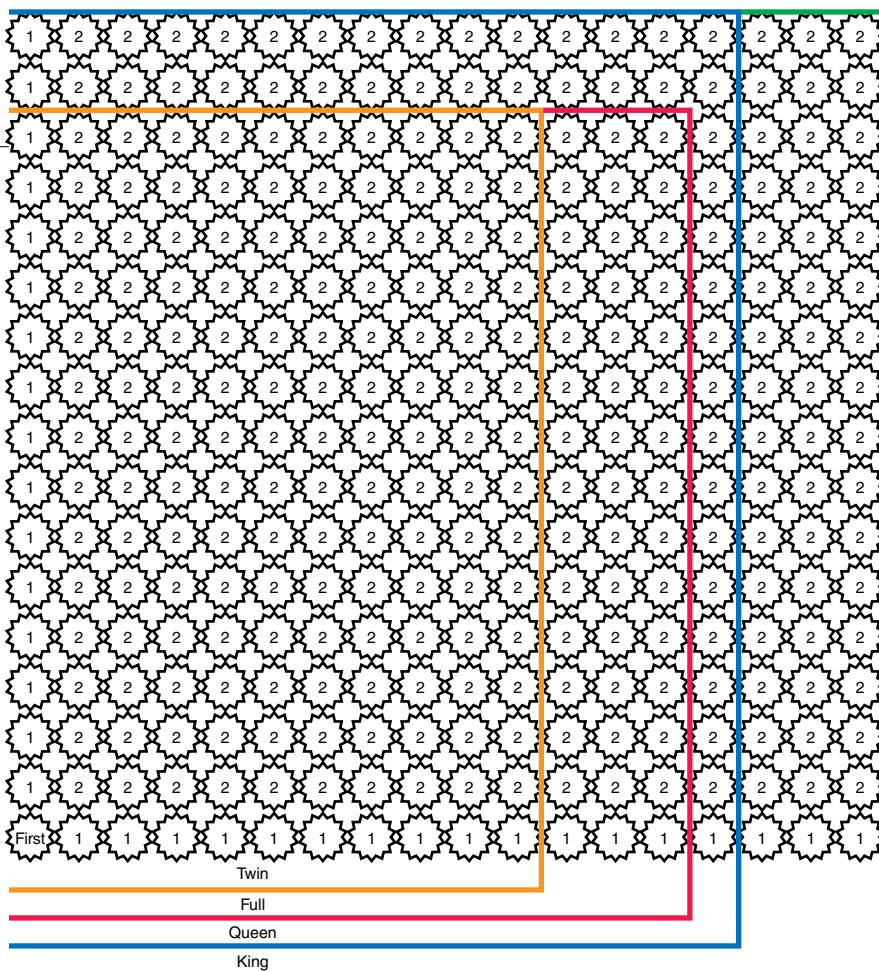
Rep as for Chocolate Cupcake. **CW**

Breath of Spring Coverlet

Continued from page 25



Breath of Spring Coverlet
Assembly Diagram



Breath of Spring Coverlet
Placement Diagram

Ladybug, Ladybug

Continued from page 35

Rnds 4–10: Sc in each sc around. At the end of rnd 10, leaving 10-inch length, fasten off. Stuff each Foot and sew 3 on each side of Bottom of Body 1–1½ inches apart.

LARGE SPOT

Make 5.

Rnd 1: With size G hook and black, leaving a 2-inch tail, ch 4, join to form ring, working over tail, work 6 sc in ring, **do not join**, mark rnd with

marker, move marker as work progresses. Pull gently on beg tail to close opening. (6 sc)

Rnd 2: 2 sc in each sc around. (12 sc)

Rnd 3: [Sc in next sc, 2 sc in next sc] 6 times. (18 sc)

Rnd 4: [Sc in each of next 2 sc, 2 sc in next sc] 6 times, leaving 10-inch length of yarn, fasten off. (24 sc)

MEDIUM SPOT

Make 3.

Rnds 1–3: Rep rnds 1–3 of Large Spot, leaving length of yarn, fasten off. (18 sc)

SMALL SPOT

Make 2.

Rnds 1 & 2: Rep rnds 1 and 2 of Large Spot, leaving length of yarn, fasten off. (12 sc)

FINISHING

Arrange Spots as desired on Top of Body and sew in place.

With pink fabric paint, draw smiling mouth centered below Eyes, or with pink yarn, embroider smiling mouth centered below Eyes. **CW**

Orchid Lace Top

Continued from page 15

Row 54: Rep row 42. Fasten off. (19 [21, 23, 25, 27, 29] sts)

ASSEMBLY

Matching rows and sts, sew side and shoulder seams.

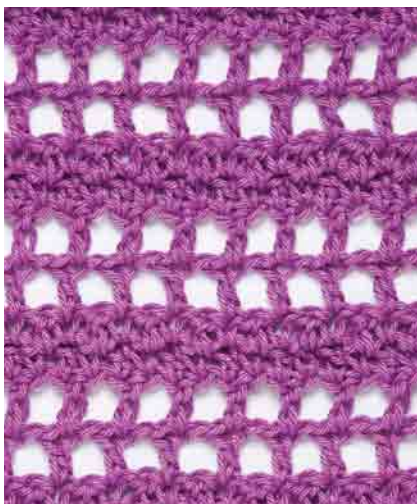
NECKLINE TRIM

Rnd 1: Join yarn at shoulder seam, ch 1, sc evenly sp around outer edge of neckline, join in beg sc. Fasten off.

SLEEVE

Make 2.

Rnd 1 (RS): Join yarn at underarm, ch 4, sk next st, [dc in next st, ch 1, sk next st] 27 [29, 31, 33, 35, 37] times, join in 3rd ch of beg ch-4, turn. (28 [30, 32, 34, 36, 38] dc, 28 [20, 32, 34, 36, 38] ch-1 sps)



Rnd 2 (WS): Ch 4, sk next st, [dc in next st, ch 1, sk next st] around, join in 3rd ch of beg ch-4, turn.

Rnd 3 (RS): Ch 1, sc in same st as beg ch-1, dc in next st, [sc in next st, dc in next st] around, join in beg sc, turn. (56 [60, 64, 68, 72, 76] sts)

Rnd 4: Ch 3, sc in next dc, [dc in next sc, sc in next dc] around, join in 3rd ch of beg ch, turn.

Rnd 5: Ch 4, sk next 2 sts, dc in next st, ch 1, sk next 2 sts, [dc in next st, ch 1, sk next st] 22 [24, 26, 28, 30, 32] times, dc in next st, ch 1, sk next 2 sts, dc in next st, ch 1, sk next 2 sts, join in 3rd ch of beg ch-4, turn. (52 [56, 60, 64, 68, 72] sts)

Rnd 6: Rep rnd 2.

Rnd 7: Rep rnd 3. (52 [56, 60, 64, 68, 72] sts)

Rnd 8: Rep rnd 4.

Rnd 9: Ch 4, sk next st, [dc in next st, ch 1, sk next st] around, join in 3rd ch of beg ch-4, turn.

Rnds 10–13: Rep rnds 6–9.

Rnds 14–16: Rep rnds 6–8. At end of rnd 16, fasten off. **CW**

Nine-Patch Pillow

Continued from page 50

CORNER SQUARE 3

Draw up lp of medium purple in first row of Wedge 3 on right-hand edge, ch 1, and work as for Corner Square 1.

WEDGE 4

Rep as for Wedge 2, beg in end (corner) of row 5 of Patch 3 and ending in corner ch of Square 1, sl st to row 1 of Corner Square 3, sl st in next row. Continue as for Wedge 2.

CORNER SQUARE 4

Draw up a lp of medium purple in end of last row of Wedge 1, ch 1, rep as for Corner Square 2, sl st to rows of Wedge 4.

BORDER

Rnd 1 (RS): Now working in rnds, draw up a lp of real teal in

first sc of Wedge 1 at top right, ch 1, sc in each sc, in each ch-1 sp and in end of each row, working (sc, ch 2, sc) in each corner sp, **join** (see *Pattern Notes*) in first sc, **do not turn**.

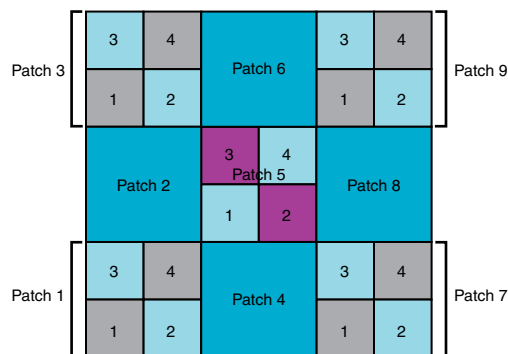
Rnd 2: Ch 1, sc in each sc around, working (sc, ch 2, sc) in each corner ch-2 sp, join in first sc. Fasten off.

ASSEMBLY

Rnd 1: With 2 Pillow pieces held tog RS facing outward, both sides with tops and bottom tog, draw up lp of gray heather in bottom right corner ch-2 sp, and working through both thicknesses, ch 1, (sc, ch 2, sc) in same corner ch-2 sp, [ch 1, sk next sc, sc in next sc] around, working at each rem corner, ch 1, sk next sc, (sc, ch 2, sc) in corner ch-2 sp. After 3 sides are completed, insert pillow form and continuing through both

thicknesses, ch 1, sk next sc, [sc in next sc, ch 1, sk next sc] across 4th edge, join in beg sc. Fasten off. **CW**

COLOR KEY	
	Gray heather
	Delft blue
	Real teal
	Medium purple



Nine-Patch Pillow
Diagram

Buyer's Guide

Bernat

Satin

320 Livingstone Ave. S.
Listowel ON N4W 3H3 Canada
(888) 368-8401
www.bernat.com

Caron

*NaturallyCaron.com Country,
NaturallyCaron.com Spa; One Pound;
Simply Soft*

Customer Service
P.O. Box 222, Washington, NC 27889
www.caron.com
www.naturallycaron.com

Coats & Clark

*Aunt Lydia's Classic Crochet, Fashion
Crochet and Fine Crochet; South Maid*

Consumer Services
P.O. Box 12229, Greenville, SC
29612-0229
(800) 648-1479
www.coatsandclark.com

DMC

*Cebelia; Embroidery Floss;
size 5 Pearl Cotton*

10 Basin Drive, Suite 130
South Kearny, NJ 07032-4688
(973) 589-0606
www.dmc.com

Glass Photo Lockets

1-inch round glass photo locket

www.glassphotolockets.com

Lily

*Sugar'n Cream, Sugar'n Cream
Super Size*

320 Livingstone Ave. S.
Listowel, ON, Canada
N4W 3H3
(888) 368-8401
www.sugarncream.com

Patons

Grace

320 Livingstone Ave. S.
Listowel, ON
N4W 3H3 Canada
(888) 368-8401
www.patonsyarns.com

Red Heart Yarns

Super Saver

P.O. Box 12229
Greenville, SC 29612-0229
www.redheart.com

Sulky of America

12wt cotton thread

980 Cobb Place Blvd., Suite 130
Kennesaw, GA 30144
(800) 874-4115
www.sulky.com

Skill Levels



BEGINNER

Beginner projects for first-time crocheters using basic stitches. Minimal shaping.



EASY

Easy projects using basic stitches, repetitive stitch patterns, simple color changes, and simple shaping and finishing.



INTERMEDIATE

Intermediate projects with a variety of stitches, mid-level shaping and finishing.



EXPERIENCED

Experienced projects using advanced techniques and stitches, detailed shaping and refined finishing.

STANDARD YARN WEIGHT SYSTEM

Categories of yarn, gauge ranges, and recommended hook sizes.

Yarn Weight Symbol & Category Names	0 LACE	1 SUPER FINE	2 FINE	3 LIGHT	4 MEDIUM	5 BULKY	6 SUPER BULKY
Type of Yarns in Category	Lace	Sock, Fingering, Baby	Sport, Baby	DK, Light Worsted	Worsted, Afghan, Aran	Chunky, Craft, Rug	Super Chunky, Roving
Crochet Gauge* Ranges in Single Crochet to 4 inches	32-42 sts	21-32 sts	16-20 sts	12-17 sts	11-14 sts	8-11 sts	5-9 sts
Recommended Hook-Metric Size Range	1.50-2.25mm	2.25-3.5mm	3.5-4.5mm	4.5-5.5mm	5.5-6.5mm	6.5-9mm	9mm and larger
Recommended Hook-U.S. Size Range	Steel 8-B/1	B/1-E/4	E/4-7	7-I/9	I/9-K/10½	K/10½-M/13	M/N/13 and larger

*Guidelines only: The above reflect the most commonly used gauges and hook sizes for specific yarn categories.

Last Stitch

Coming in the June 2012 issue

Eco Ways Travel Bag

This earth-friendly bag made of yarn containing recycled materials makes a great travel tote for take-along necessities.

Shells & Lace Shawl

Two panels are creatively worked together into a one-piece design in this gorgeous shell-stitch shawl.

Jamaican Throw

A two-row pattern repeat of mostly double crochets and chains makes this breezy throw easy to stitch.

On Sale May 1, 2012

STITCH GUIDE

FOR MORE COMPLETE INFORMATION, VISIT FREEPATTERNS.COM

STITCH ABBREVIATIONS

beg	begin/begins/beginning
bpdc	back post double crochet
bpsc	back post single crochet
bp tr	back post treble crochet
CC	contrasting color
ch(s)	chain(s)
ch-	refers to chain or space previously made (i.e., ch-1 space)
ch sp(s)	chain space(s)
cl(s)	cluster(s)
cm	centimeter(s)
dc	double crochet (singular/plural)
dc dec	double crochet 2 or more stitches together, as indicated
dec	decrease/decreases/decreasing
dtr	double treble crochet
ext	extended
fpdc	front post double crochet
fp sc	front post single crochet
fp tr	front post treble crochet
g	gram(s)
hdc	half double crochet
hdc dec	half double crochet 2 or more stitches together, as indicated
inc	increase/increases/increasing
lp(s)	loop(s)
MC	main color
mm	millimeter(s)
oz	ounce(s)
pc	popcorn(s)
rem	remain/remains/remaining
rep(s)	repeat(s)
rnd(s)	round(s)
RS	right side
sc	single crochet (singular/plural)
sc dec	single crochet 2 or more stitches together, as indicated
sk	skip/skipped/skipping
sl st(s)	slip stitch(es)
sp(s)	space(s)/spaced
st(s)	stitch(es)
tog	together
tr	treble crochet
tr tr	triple treble
WS	wrong side
yd(s)	yard(s)
yo	yarn over

YARN CONVERSION

OUNCES TO GRAMS	GRAMS TO OUNCES
1.....28.4	25.....7/8
2.....56.7	40.....1 1/2
3.....85.0	50.....1 3/4
4.....113.4	100.....3 1/2

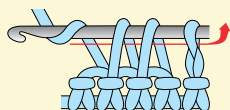
UNITED STATES

UNITED KINGDOM

sl st (slip stitch)	=	sc (single crochet)
sc (single crochet)	=	dc (double crochet)
hdc (half double crochet)	=	htr (half treble crochet)
dc (double crochet)	=	tr (treble crochet)
tr (treble crochet)	=	dtr (double treble crochet)
dtr (double treble crochet)	=	ttr (triple treble crochet)
skip	=	miss

Single crochet decrease (sc dec):

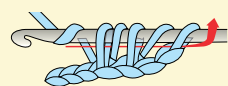
(Insert hook, yo, draw lp through) in each of the sts indicated, yo, draw through all lps on hook.



Example of 2-sc dec

Half double crochet decrease (hdc dec):

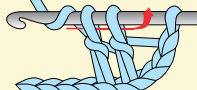
(Yo, insert hook, yo, draw lp through) in each of the sts indicated, yo, draw through all lps on hook.



Example of 2-hdc dec

Double crochet decrease (dc dec):

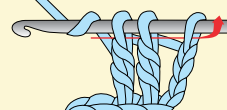
(Yo, insert hook, yo, draw lp through, yo, draw through 2 lps on hook) in each of the sts indicated, yo, draw through all lps on hook.



Example of 2-dc dec

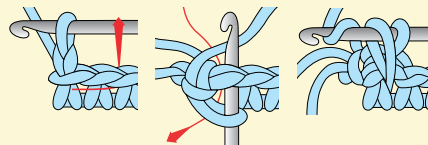
Treble crochet decrease (tr dec):

Holding back last lp of each st, tr in each of the sts indicated, yo, pull through all lps on hook.

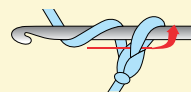


Example of 2-tr dec

Reverse single crochet (reverse sc): Ch 1, sk first st, working from left to right, insert hook in next st from front to back, draw up lp on hook, yo, and draw through both lps on hook.

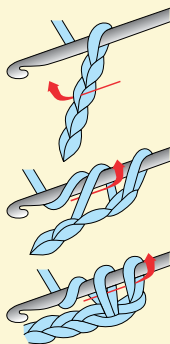


Chain (ch): Yo, pull through lp on hook.



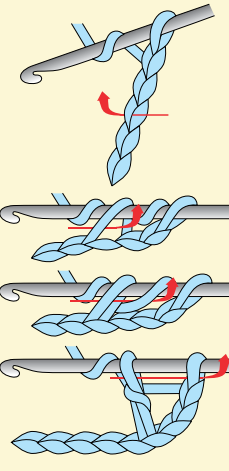
Single crochet (sc):

Insert hook in st, yo, pull through st, yo, pull through both lps on hook.



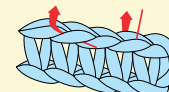
Double crochet (dc):

Yo, insert hook in st, yo, pull through st, [yo, pull through 2 lps] twice.



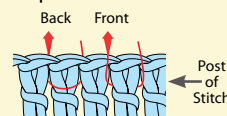
Front loop (front lp) Back loop (back lp)

Front Loop Back Loop



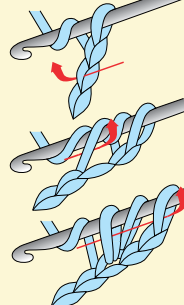
Front post stitch (fp):

Back post stitch (bp): When working post st, insert hook from right to left around post of st on previous row.



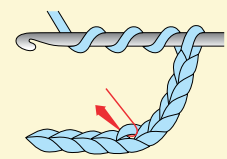
Half double crochet (hdc):

Yo, insert hook in st, yo, pull through st, yo, pull through all 3 lps on hook.

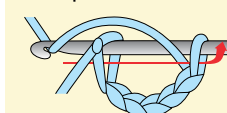


Double treble

crochet (dtr): Yo 3 times, insert hook in st, yo, pull through st, [yo, pull through 2 lps] 4 times.

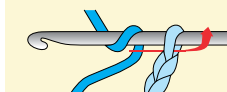


Slip stitch (sl st): Insert hook in st, pull through both lps on hook.



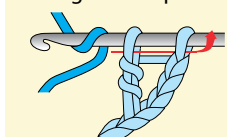
Chain color change (ch color change)

Yo with new color, draw through last lp on hook.



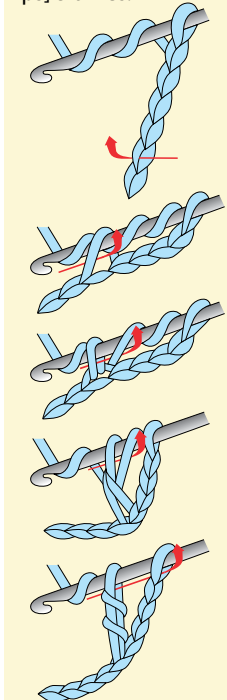
Double crochet color change (dc color change)

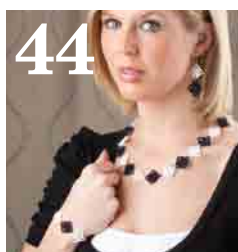
Drop first color, yo with new color, draw through last 2 lps of st.



Treble crochet (tr):

Yo twice, insert hook in st, yo, pull through st, [yo, pull through 2 lps] 3 times.







840008 Spring



840017 Purple



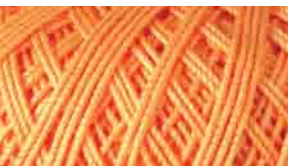
840018 Ecru



840020 White



840019 Pink



840010 Orange



840011 Yellow



840013 Lilac



840014 Aqua



840016 Fern

Nazli Gelin

GARDEN 10 Thread

Garden 10
cotton thread,
distributed by
Universal Yarn™,
is a beautiful
100% mercerized
Egyptian Giza
cotton thread.
308 yards.

\$3.99

DOILIES *in Color*™

Bring the classic doily back to your home decor
with color! 8 colorful doilies all made using Nazli
Gelin Garden 10 thread. Skill Level:
Intermediate to experienced.

#871124 \$8.95



UNIVERSAL YARN

840009
Shades of Orange



Available at
AnniesAttic.com

CRXBB



Aran Hearts Throw
LW2947



perfect for *Romantic*
Feminine throws